



EQT | EXETER



# 15730 Park Row Drive

Houston, TX

Building Size: 41,400 SF | 15,850 SF of Industrial Space Available

VISIT [EQTEXETER.COM](https://www.eqtexeter.com)

# 15730 Park Row Drive

Houston, TX

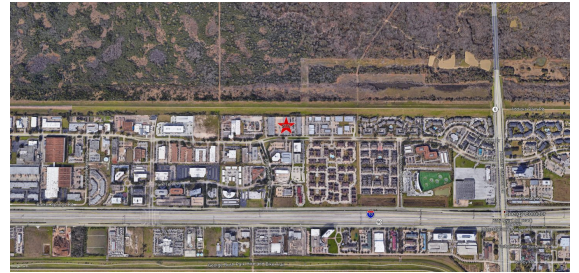
Building Size: 41,400 SF | Building Availability: 15,850 SF

## Building Specifications

- Industrial space available
- 41,400 SF total building size
- 15,850 SF available size
- Attractive class "A" flex project
- Newly renovated units
- 20' clear height
- Dock high loading
- Located in Park Ten Business Park, a preferred location in West Houston, with immediate access to Hwy 6 and I-10

## Additional Information

- **Suite 300: 6,250 SF available**
  - Move-in ready condition
  - 3,250 SF of warehouse space
  - 3,000 SF of office space
  - 2 drive-in doors
- **Suite 500: 9,584 SF available**
  - Shell condition
  - 3,220 SF of warehouse space
  - 6,384 SF of office space
  - 2 dock doors
  - 1 drive-in door

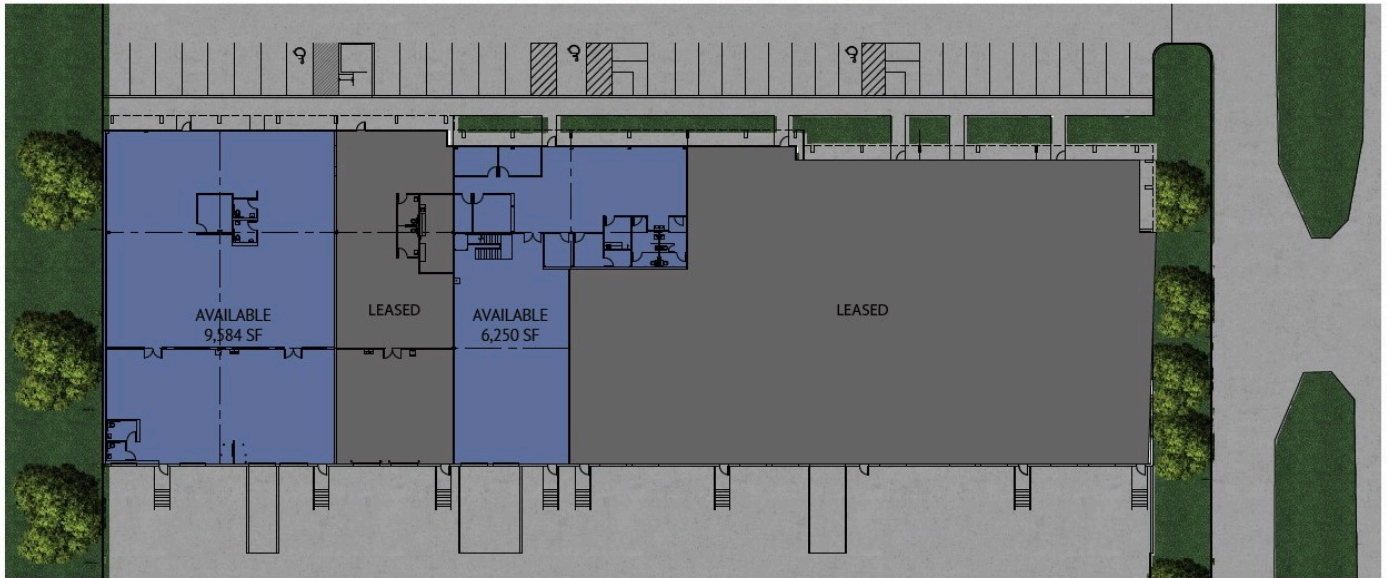


# 15730 Park Row Drive

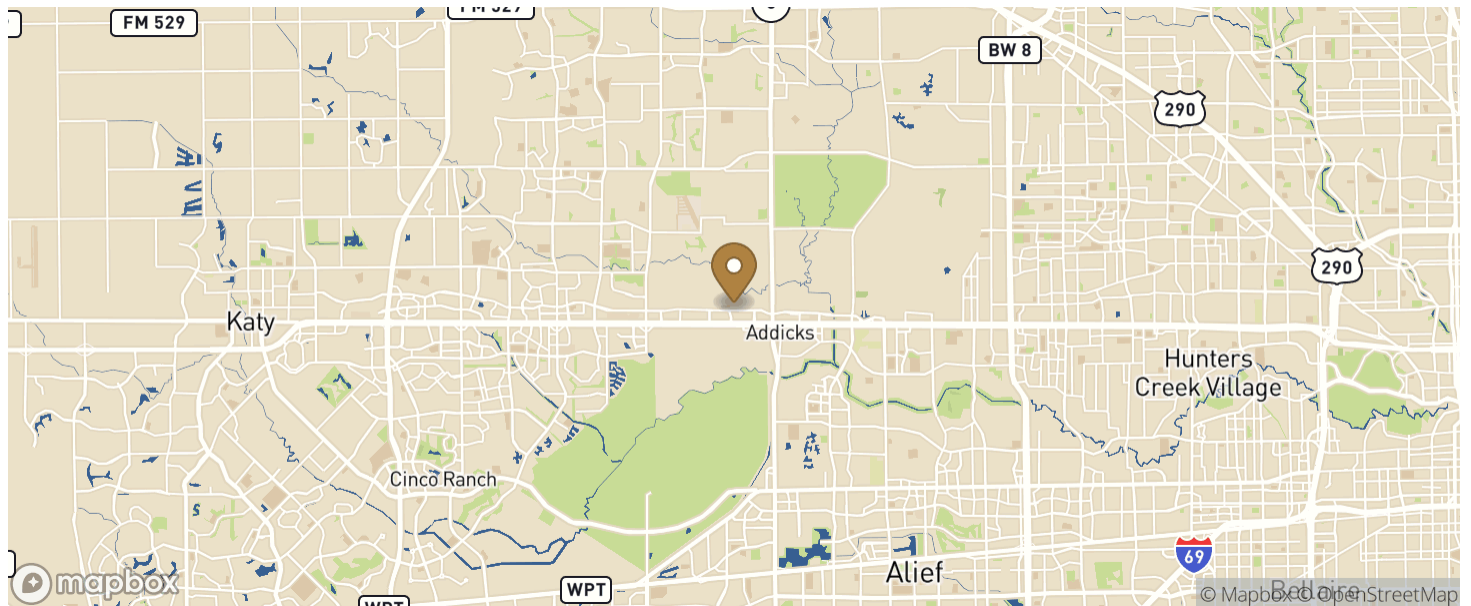
Houston, TX

Building Size: 41,400 SF | Building Availability: 15,850 SF

## 15730 PARK ROW DRIVE



## Location



## Access

CITY	POPULATION	MILES	DRIVE TIME
Houston	2,304,580	20	0 h 30 m
Austin	961,855	145	2 h 26 m

# 15730 Park Row Drive

Houston, TX

Building Size: 41,400 SF | Building Availability: 15,850 SF

San Antonio	<b>1,492,510</b>	<b>179</b>	<b>2 h 51 m</b>
Dallas	<b>1,304,379</b>	<b>252</b>	<b>4 h 03 m</b>
Fort Worth	<b>918,915</b>	<b>259</b>	<b>4 h 07 m</b>
Monterrey	<b>1,135,512</b>	<b>473</b>	<b>7 h 49 m</b>

## Population

ACCESS AND LABOR FORCE

10 MILES

Total Population

**1,301,797**

Total Labor Force

**640,049**

Unemployment Rate

**4.50%**

Median Household Income

**73,373**

Warehouse Employees

**4,993**

High School Education Or Higher

**62.95%**