

# PRIME COMMERCIAL OFFICE SPACES FOR LEASE



## OAK TRACE - EXECUTIVE AND MEDICAL OFFICE PARK

901 SE 28th St, Bentonville, AR 72712



### PROPERTY DESCRIPTION

Turn key office space - all utilities on when tenant moves in, landlord pays directly. All a tenant has to do is bring in their own belongings, and turn on their own internet and phone. Electric, gas, water, landscaping, dumpsters, parking lots, HVAC units, are all paid for and cared for by the landlord and property management. This office park is in very nice condition and well-kept. The office park is affordable and flexible, offering many different sizes of space for lease. There is ample parking on site, and ample opportunity for tenants to have signage both on marquee's and on the buildings and doors into the suites. Each suite is equipped with at least one private bathroom. This office park is in the heart of Bentonville just 5 minutes from Downtown Bentonville or the new Walmart Home Office. 15 minutes to the XNA airport.

### PROPERTY HIGHLIGHTS

- \$80/1,000 SF Monthly Utility Fee
- Diverse set of Office Tenants: Medical, Vendors, Suppliers, and Contractors Alike
- At Least 1 Private Bathroom in Each Suite
- Signage Opportunity on the Marquee's and Buildings/Doors

### OFFERING SUMMARY

Lease Rate:	\$21 - 23.50 SF/yr (Gross)
Number of Units Available:	5
Available SF:	600 - 4,720 SF

### DEMOGRAPHICS

	1 MILE	3 MILES	5 MILES
Total Households	1,709	13,196	30,314
Total Population	4,105	34,647	80,766
Average HH Income	\$52,735	\$69,634	\$72,622

We obtained the information above from sources we believe to be reliable. However, we have not verified its accuracy and make no guarantee, warranty or representation about it. It is submitted subject to the possibility of errors, omissions, change of price, rental or other conditions, prior sale, lease or financing, or withdrawal without notice. We include projections, opinions, assumptions or estimates for example only, and they may not represent current or future performance of the property. You and your tax and legal advisors should conduct your own investigation of the property and transaction.

### SALMONSEN GROUP

Executive Broker  
O: 479.231.1355  
C: 479.330.1250  
sgrleadmanager@gmail.com  
AR #EB00066512

**KW COMMERCIAL**  
201 SW 14th St.  
Suite 203  
Bentonville, AR 72712

Each Office Independently Owned and Operated [salmonsengroup.com](http://salmonsengroup.com)

# PRIME COMMERCIAL OFFICE SPACES FOR LEASE



## OAK TRACE - EXECUTIVE AND MEDICAL OFFICE PARK

901 SE 28th St, Bentonville, AR 72712



### LEASE INFORMATION

Lease Type:	Gross	Lease Term:	Negotiable
Total Space:	600 - 4,720 SF	Lease Rate:	\$21 - \$23.50 SF/yr

### AVAILABLE SPACES

SUITE	TENANT	SIZE (SF)	LEASE TYPE	LEASE RATE	DESCRIPTION
901 SE 28th St Unit 1	Available	600 SF	Gross	\$23.00 SF/yr	-
903 SE 28th St Suite 3	Available	600 SF	Gross	\$22.50 SF/yr	-
2701 SE G St Unit 5	Available	1,035 SF	Gross	\$23.00 SF/yr	-
2705 Suites 1-11	Available	4,720 SF	Gross	\$21.00 SF/yr	-
2713 SE I St Suite 9	Available	1,300 SF	Gross	\$23.50 SF/yr	-

We obtained the information above from sources we believe to be reliable. However, we have not verified its accuracy and make no guarantee, warranty or representation about it. It is submitted subject to the possibility of errors, omissions, change of price, rental or other conditions, prior sale, lease or financing, or withdrawal without notice. We include projections, opinions, assumptions or estimates for example only, and they may not represent current or future performance of the property. You and your tax and legal advisors should conduct your own investigation of the property and transaction.

### SALMONSEN GROUP

Executive Broker  
 O: 479.231.1355  
 C: 479.330.1250  
 sgrleadmanager@gmail.com  
 AR #EB00066512

**KW COMMERCIAL**  
 201 SW 14th St.  
 Suite 203  
 Bentonville, AR 72712

Each Office Independently Owned and Operated [salmonsengroup.com](http://salmonsengroup.com)

# PRIME COMMERCIAL OFFICE SPACES FOR LEASE



## 901 SE 28TH SUITE 1 PHOTOS

901 SE 28th St, Bentonville, AR 72712



We obtained the information above from sources we believe to be reliable. However, we have not verified its accuracy and make no guarantee, warranty or representation about it. It is submitted subject to the possibility of errors, omissions, change of price, rental or other conditions, prior sale, lease or financing, or withdrawal without notice. We include projections, opinions, assumptions or estimates for example only, and they may not represent current or future performance of the property. You and your tax and legal advisors should conduct your own investigation of the property and transaction.

**SALMONSEN GROUP**  
Executive Broker  
O: 479.231.1355  
C: 479.330.1250  
sgrleadmanager@gmail.com  
AR #EB00066512

**KW COMMERCIAL**  
201 SW 14th St.  
Suite 203  
Bentonville, AR 72712

Each Office Independently Owned and Operated [salmonsengroup.com](http://salmonsengroup.com)



# 901 SE 28TH SUITE 1 FLOORPLAN

901 SE 28th St, Bentonville, AR 72712



## 901 SE 28th St Suite 1: +/- 600 SF

FLOOR PLAN CREATED BY CUBICASA APP. MEASUREMENTS DEEMED HIGHLY RELIABLE BUT NOT GUARANTEED

We obtained the information above from sources we believe to be reliable. However, we have not verified its accuracy and make no guarantee, warranty or representation about it. It is submitted subject to the possibility of errors, omissions, change of price, rental or other conditions, prior sale, lease or financing, or withdrawal without notice. We include projections, opinions, assumptions or estimates for example only, and they may not represent current or future performance of the property. You and your tax and legal advisors should conduct your own investigation of the property and transaction.

**SALMONSEN GROUP**  
Executive Broker  
O: 479.231.1355  
C: 479.330.1250  
sgrleadmanager@gmail.com  
AR #EB00066512

**KW COMMERCIAL**  
201 SW 14th St.  
Suite 203  
Bentonville, AR 72712

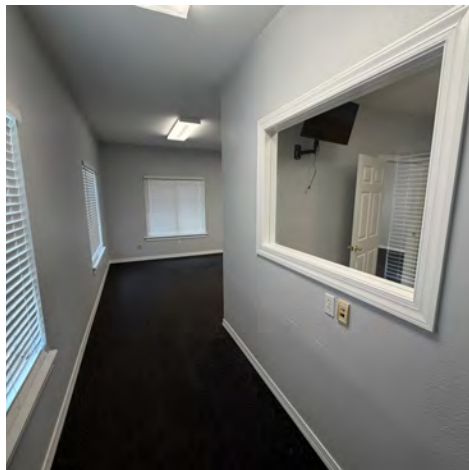
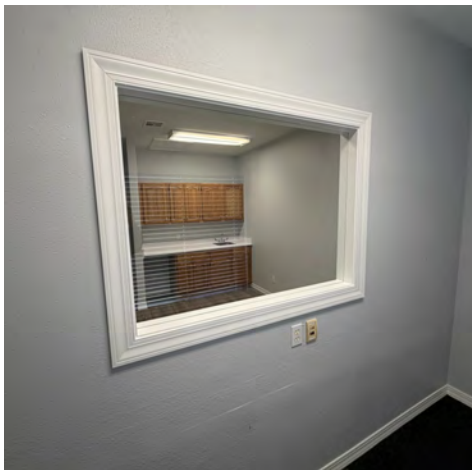
Each Office Independently Owned and Operated [salmonsengroup.com](http://salmonsengroup.com)

# PRIME COMMERCIAL OFFICE SPACES FOR LEASE



## 903 SE 28TH SUITE 3 PHOTOS

901 SE 28th St, Bentonville, AR 72712



We obtained the information above from sources we believe to be reliable. However, we have not verified its accuracy and make no guarantee, warranty or representation about it. It is submitted subject to the possibility of errors, omissions, change of price, rental or other conditions, prior sale, lease or financing, or withdrawal without notice. We include projections, opinions, assumptions or estimates for example only, and they may not represent current or future performance of the property. You and your tax and legal advisors should conduct your own investigation of the property and transaction.

**SALMONSEN GROUP**  
Executive Broker  
O: 479.231.1355  
C: 479.330.1250  
sgrleadmanager@gmail.com  
AR #EB00066512

**KW COMMERCIAL**  
201 SW 14th St.  
Suite 203  
Bentonville, AR 72712

Each Office Independently Owned and Operated [salmonsengroup.com](http://salmonsengroup.com)

**PRIME COMMERCIAL OFFICE SPACES FOR LEASE**



# 903 SE 28TH SUITE 3 FLOORPLAN

901 SE 28th St, Bentonville, AR 72712



## 903 SE 28th Suite 3 +/- 600 SF

FLOOR PLAN CREATED BY CUBICASA APP, MEASUREMENTS DEEMED HIGHLY RELIABLE BUT NOT GUARANTEED

We obtained the information above from sources we believe to be reliable. However, we have not verified its accuracy and make no guarantee, warranty or representation about it. It is submitted subject to the possibility of errors, omissions, change of price, rental or other conditions, prior sale, lease or financing, or withdrawal without notice. We include projections, opinions, assumptions or estimates for example only, and they may not represent current or future performance of the property. You and your tax and legal advisors should conduct your own investigation of the property and transaction.

**SALMONSEN GROUP**  
Executive Broker  
O: 479.231.1355  
C: 479.330.1250  
sgrleadmanager@gmail.com  
AR #EB00066512

**KW COMMERCIAL**  
201 SW 14th St.  
Suite 203  
Bentonville, AR 72712

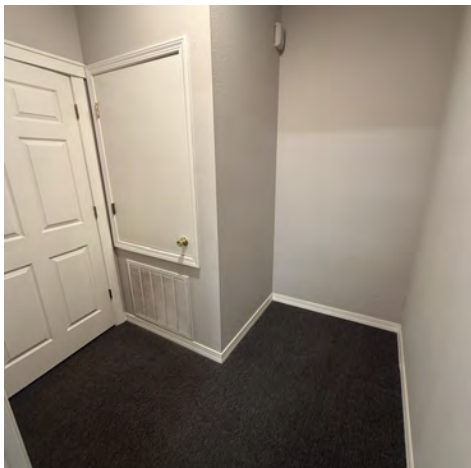
Each Office Independently Owned and Operated [salmonsengroup.com](http://salmonsengroup.com)

# PRIME COMMERCIAL OFFICE SPACES FOR LEASE



## 2701 SE G ST., SUITE 5 PHOTOS

Oak Trace - Executive And Medical Office Park



We obtained the information above from sources we believe to be reliable. However, we have not verified its accuracy and make no guarantee, warranty or representation about it. It is submitted subject to the possibility of errors, omissions, change of price, rental or other conditions, prior sale, lease or financing, or withdrawal without notice. We include projections, opinions, assumptions or estimates for example only, and they may not represent current or future performance of the property. You and your tax and legal advisors should conduct your own investigation of the property and transaction.

**SALMONSEN GROUP**  
Executive Broker  
O: 479.231.1355  
C: 479.330.1250  
sgrleadmanager@gmail.com  
AR #EB00066512

**KW COMMERCIAL**  
201 SW 14th St.  
Suite 203  
Bentonville, AR 72712

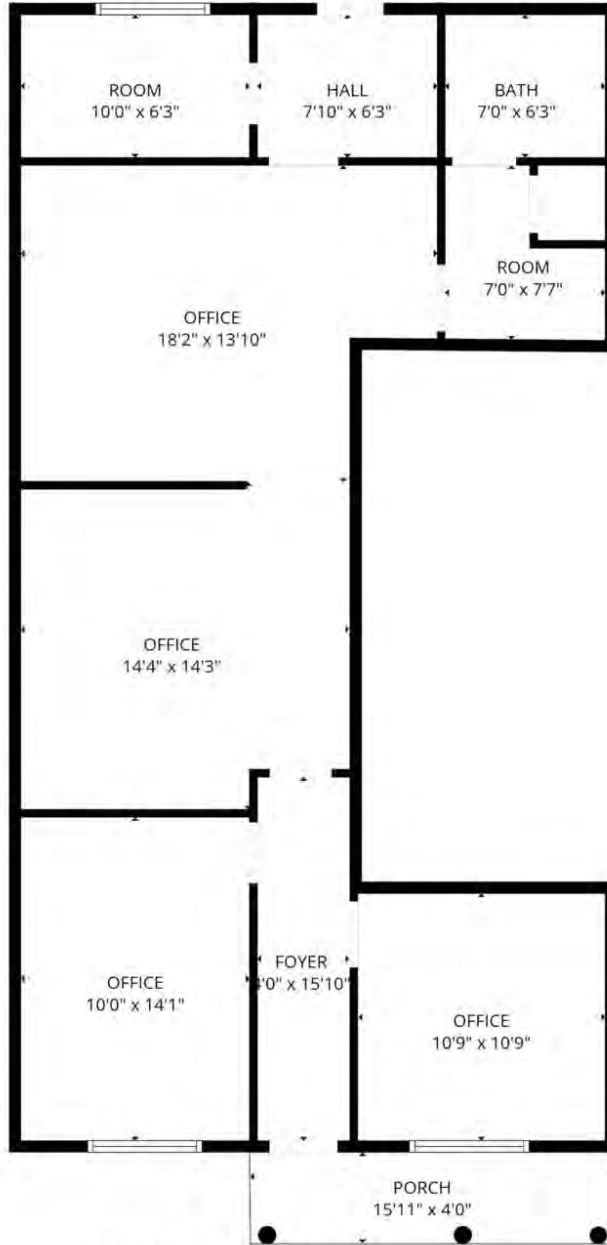
Each Office Independently Owned and Operated [salmonsengroup.com](http://salmonsengroup.com)

**PRIME COMMERCIAL OFFICE SPACES FOR LEASE**



**2701 SE G ST., SUITE 5 FLOOR PLAN**

Oak Trace - Executive And Medical Office Park



**2701 SE G St., Suite 5  
+/- 1,035 SF**

FLOOR PLAN CREATED BY CUBICASA APP. MEASUREMENTS DEEMED HIGHLY RELIABLE BUT NOT GUARANTEED

We obtained the information above from sources we believe to be reliable. However, we have not verified its accuracy and make no guarantee, warranty or representation about it. It is submitted subject to the possibility of errors, omissions, change of price, rental or other conditions, prior sale, lease or financing, or withdrawal without notice. We include projections, opinions, assumptions or estimates for example only, and they may not represent current or future performance of the property. You and your tax and legal advisors should conduct your own investigation of the property and transaction.

**SALMONSEN GROUP**  
Executive Broker  
O: 479.231.1355  
C: 479.330.1250  
sgrleadmanager@gmail.com  
AR #EB00066512

**KW COMMERCIAL**  
201 SW 14th St.  
Suite 203  
Bentonville, AR 72712

Each Office Independently Owned and Operated [salmonsengroup.com](http://salmonsengroup.com)

# PRIME COMMERCIAL OFFICE SPACES FOR LEASE



## 2705 SE G ST., SUITE 1-11 PHOTOS

Oak Trace - Executive And Medical Office Park



We obtained the information above from sources we believe to be reliable. However, we have not verified its accuracy and make no guarantee, warranty or representation about it. It is submitted subject to the possibility of errors, omissions, change of price, rental or other conditions, prior sale, lease or financing, or withdrawal without notice. We include projections, opinions, assumptions or estimates for example only, and they may not represent current or future performance of the property. You and your tax and legal advisors should conduct your own investigation of the property and transaction.

**SALMONSEN GROUP**  
Executive Broker  
O: 479.231.1355  
C: 479.330.1250  
sgrleadmanager@gmail.com  
AR #EB00066512

**KW COMMERCIAL**  
201 SW 14th St.  
Suite 203  
Bentonville, AR 72712

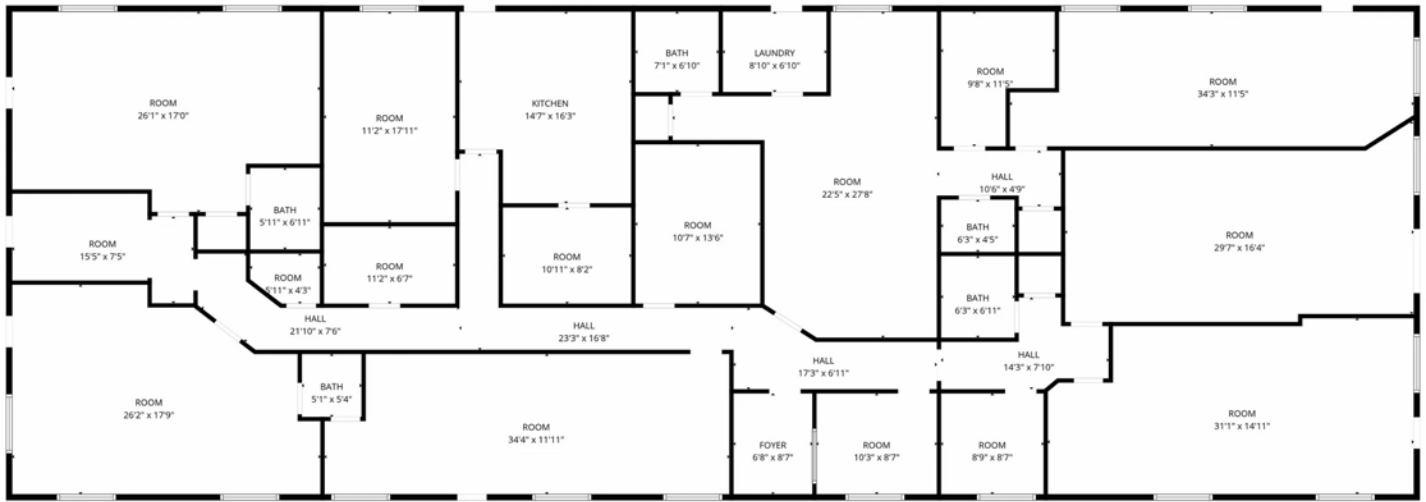
Each Office Independently Owned and Operated [salmonsengroup.com](http://salmonsengroup.com)

# PRIME COMMERCIAL OFFICE SPACES FOR LEASE



## 2705 SE G ST., SUITE 1-11 FLOORPLAN

Oak Trace - Executive And Medical Office Park



## 2705 SE G St Suite 1-11: +/- 4,720 SF

FLOOR PLAN CREATED BY CUBICASA APP. MEASUREMENTS DEEMED HIGHLY RELIABLE BUT NOT GUARANTEED.

We obtained the information above from sources we believe to be reliable. However, we have not verified its accuracy and make no guarantee, warranty or representation about it. It is submitted subject to the possibility of errors, omissions, change of price, rental or other conditions, prior sale, lease or financing, or withdrawal without notice. We include projections, opinions, assumptions or estimates for example only, and they may not represent current or future performance of the property. You and your tax and legal advisors should conduct your own investigation of the property and transaction.

**SALMONSEN GROUP**  
Executive Broker  
O: 479.231.1355  
C: 479.330.1250  
sgrleadmanager@gmail.com  
AR #EB00066512

**KW COMMERCIAL**  
201 SW 14th St.  
Suite 203  
Bentonville, AR 72712

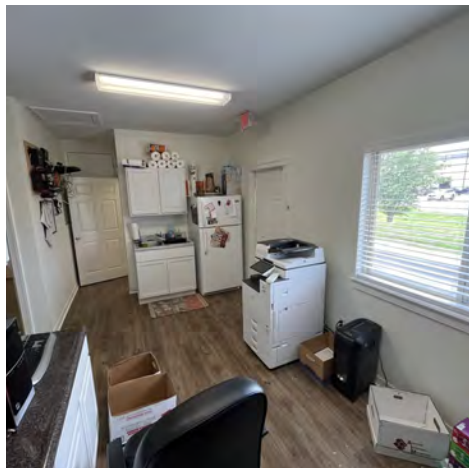
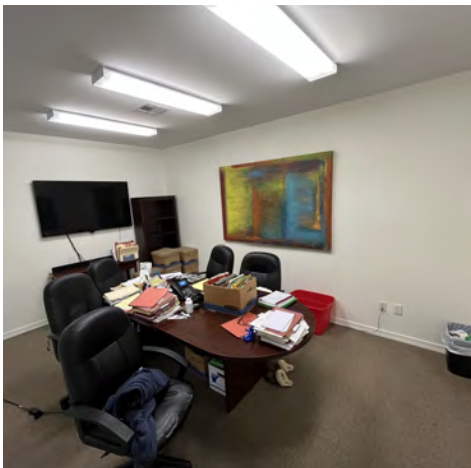
Each Office Independently Owned and Operated [salmonsengroup.com](http://salmonsengroup.com)

# PRIME COMMERCIAL OFFICE SPACES FOR LEASE



## 2713 SE I ST SUITE 9 PHOTOS

Oak Trace - Executive And Medical Office Park



We obtained the information above from sources we believe to be reliable. However, we have not verified its accuracy and make no guarantee, warranty or representation about it. It is submitted subject to the possibility of errors, omissions, change of price, rental or other conditions, prior sale, lease or financing, or withdrawal without notice. We include projections, opinions, assumptions or estimates for example only, and they may not represent current or future performance of the property. You and your tax and legal advisors should conduct your own investigation of the property and transaction.

**SALMONSEN GROUP**  
Executive Broker  
O: 479.231.1355  
C: 479.330.1250  
sgrleadmanager@gmail.com  
AR #EB00066512

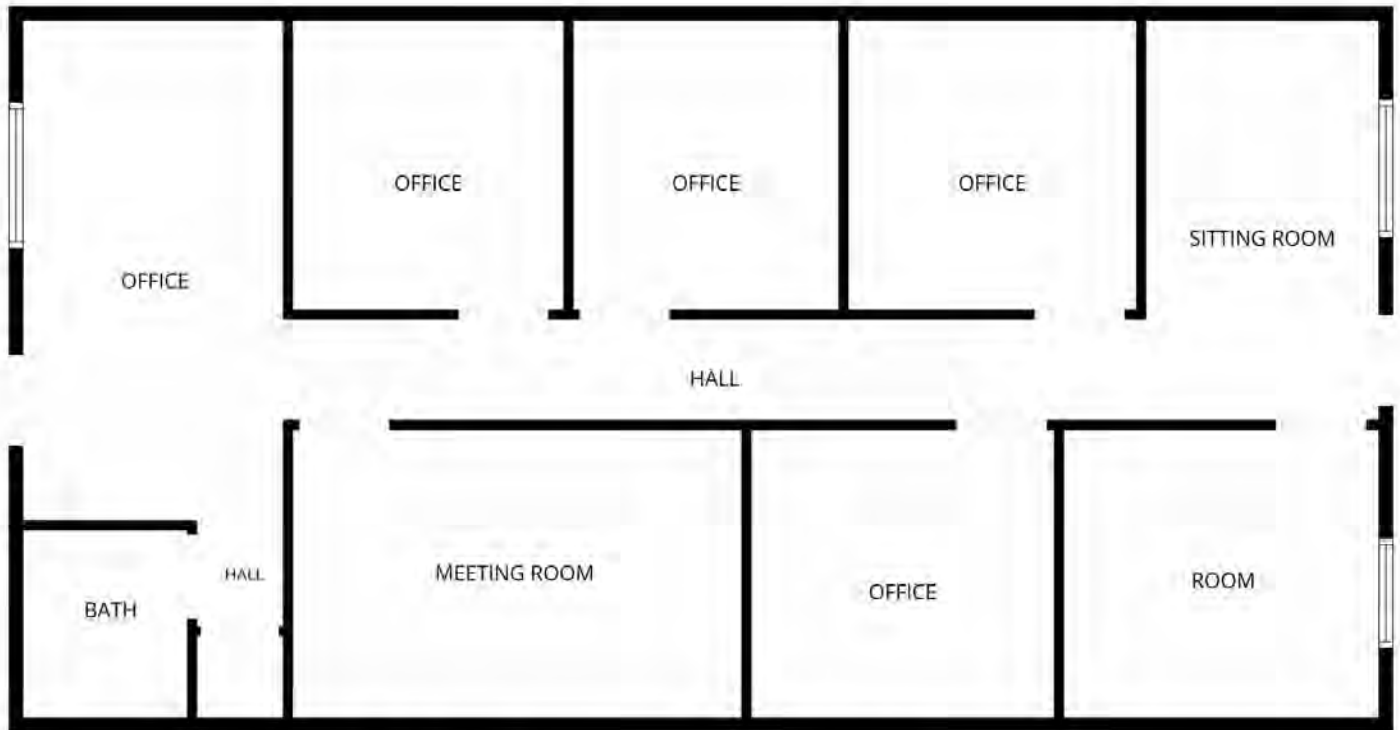
**KW COMMERCIAL**  
201 SW 14th St.  
Suite 203  
Bentonville, AR 72712

Each Office Independently Owned and Operated [salmonsengroup.com](http://salmonsengroup.com)



# 2713 SE I ST SUITE 9 FLOORPLAN

Oak Trace - Executive And Medical Office Park



## 2713 SE I St Suite 9: +/- 1,300 SF

We obtained the information above from sources we believe to be reliable. However, we have not verified its accuracy and make no guarantee, warranty or representation about it. It is submitted subject to the possibility of errors, omissions, change of price, rental or other conditions, prior sale, lease or financing, or withdrawal without notice. We include projections, opinions, assumptions or estimates for example only, and they may not represent current or future performance of the property. You and your tax and legal advisors should conduct your own investigation of the property and transaction.

**SALMONSEN GROUP**  
Executive Broker  
O: 479.231.1355  
C: 479.330.1250  
sgrleadmanager@gmail.com  
AR #EB00066512

**KW COMMERCIAL**  
201 SW 14th St.  
Suite 203  
Bentonville, AR 72712

Each Office Independently Owned and Operated [salmonsengroup.com](http://salmonsengroup.com)

# PRIME COMMERCIAL OFFICE SPACES FOR LEASE



## OAK TRACE - EXECUTIVE AND MEDICAL OFFICE PARK

901 SE 28th St, Bentonville, AR 72712



We obtained the information above from sources we believe to be reliable. However, we have not verified its accuracy and make no guarantee, warranty or representation about it. It is submitted subject to the possibility of errors, omissions, change of price, rental or other conditions, prior sale, lease or financing, or withdrawal without notice. We include projections, opinions, assumptions or estimates for example only, and they may not represent current or future performance of the property. You and your tax and legal advisors should conduct your own investigation of the property and transaction.

**SALMONSEN GROUP**  
Executive Broker  
O: 479.231.1355  
C: 479.330.1250  
sgrleadmanager@gmail.com  
AR #EB00066512

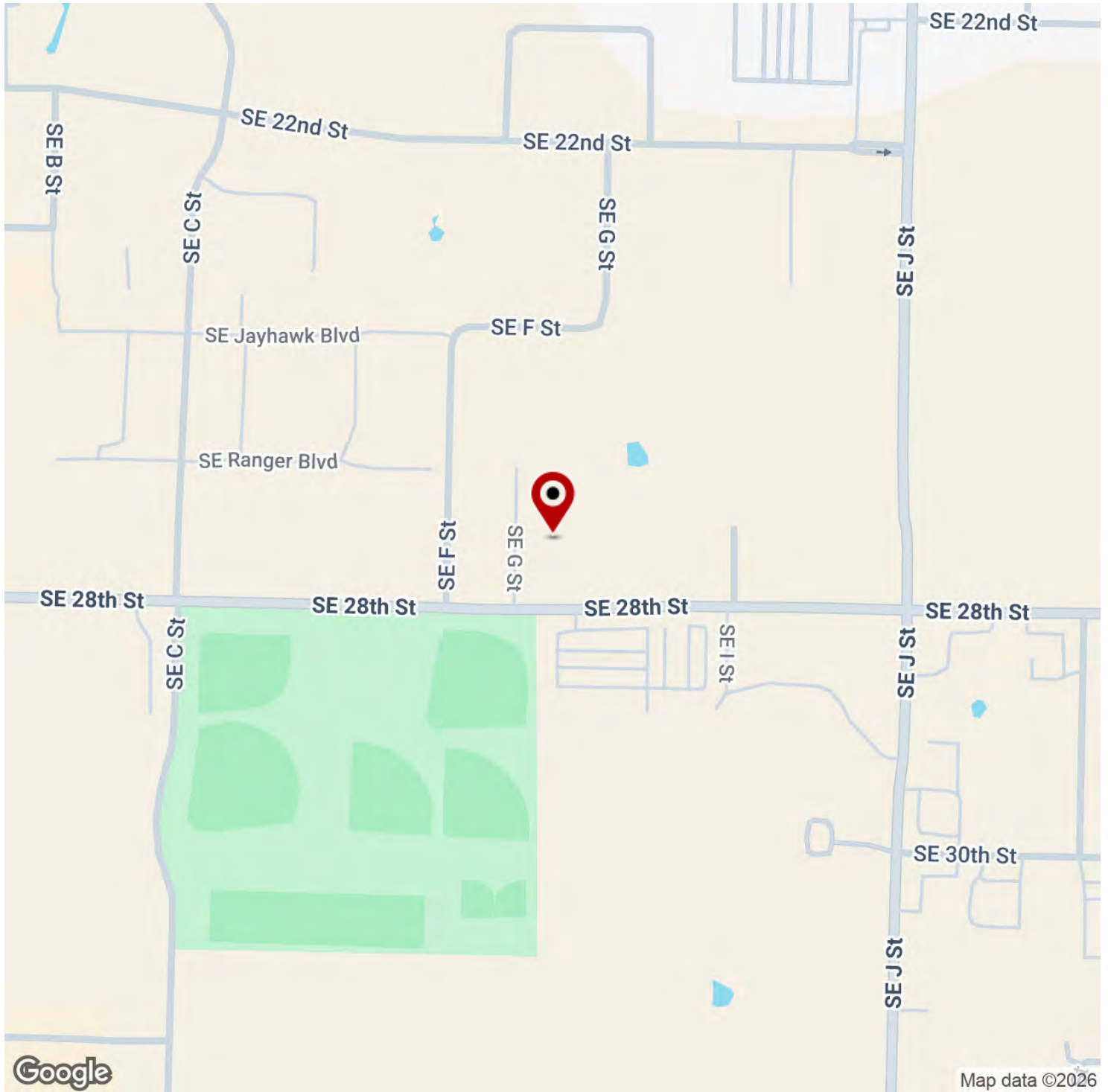
**KW COMMERCIAL**  
201 SW 14th St.  
Suite 203  
Bentonville, AR 72712

Each Office Independently Owned and Operated [salmonsengroup.com](http://salmonsengroup.com)

# PRIME COMMERCIAL OFFICE SPACES FOR LEASE

## OAK TRACE - EXECUTIVE AND MEDICAL OFFICE PARK

901 SE 28th St, Bentonville, AR 72712



We obtained the information above from sources we believe to be reliable. However, we have not verified its accuracy and make no guarantee, warranty or representation about it. It is submitted subject to the possibility of errors, omissions, change of price, rental or other conditions, prior sale, lease or financing, or withdrawal without notice. We include projections, opinions, assumptions or estimates for example only, and they may not represent current or future performance of the property. You and your tax and legal advisors should conduct your own investigation of the property and transaction.

**SALMONSEN GROUP**  
Executive Broker  
O: 479.231.1355  
C: 479.330.1250  
sgrleadmanager@gmail.com  
AR #EB00066512

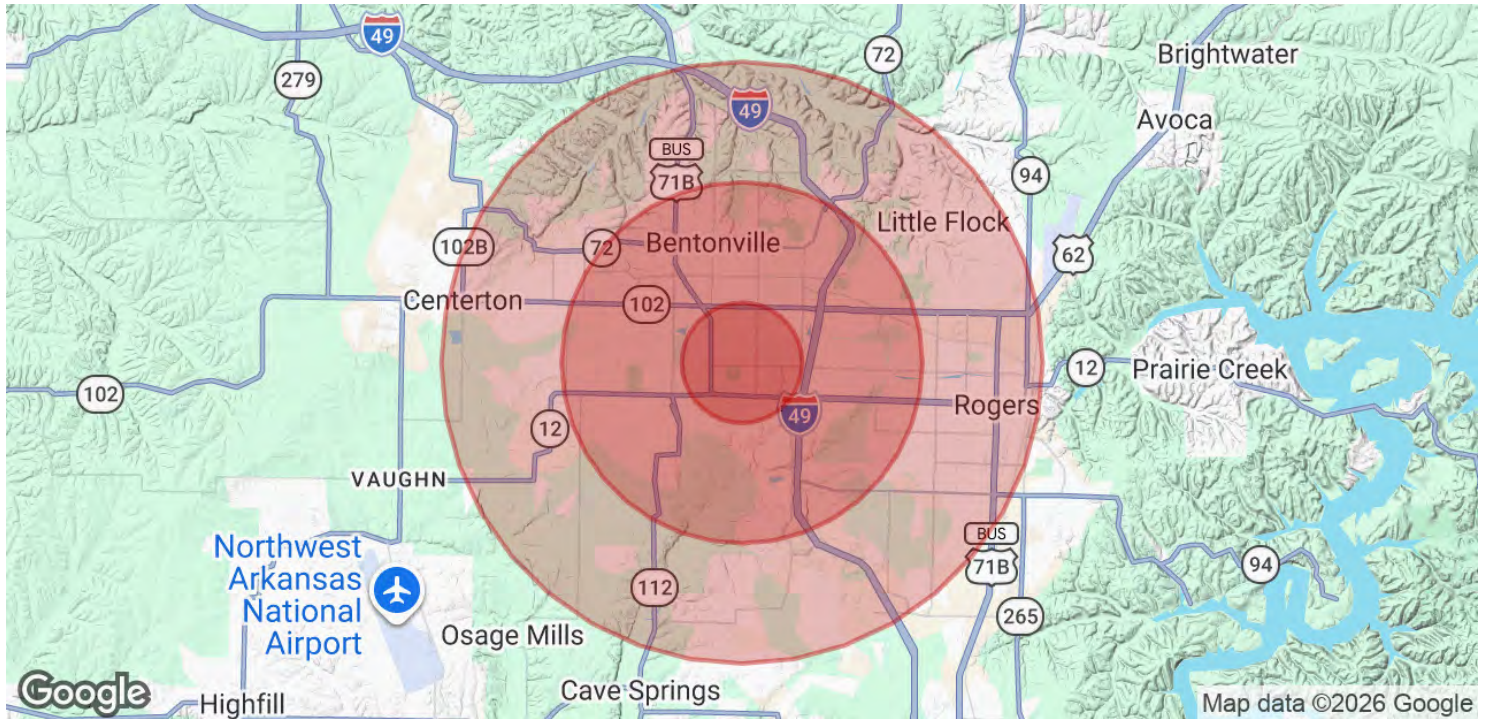
**KW COMMERCIAL**  
201 SW 14th St.  
Suite 203  
Bentonville, AR 72712

Each Office Independently Owned and Operated [salmonsengroup.com](http://salmonsengroup.com)

# PRIME COMMERCIAL OFFICE SPACES FOR LEASE

## OAK TRACE - EXECUTIVE AND MEDICAL OFFICE PARK

901 SE 28th St, Bentonville, AR 72712



<b>POPULATION</b>	<b>1 MILE</b>	<b>3 MILES</b>	<b>5 MILES</b>
Total Population	4,105	34,647	80,766
Average Age	28.1	31.1	32.2
Average Age (Male)	27.6	29.1	30.2
Average Age (Female)	28.9	32.7	33.5

<b>HOUSEHOLDS &amp; INCOME</b>	<b>1 MILE</b>	<b>3 MILES</b>	<b>5 MILES</b>
Total Households	1,709	13,196	30,314
# of Persons per HH	2.4	2.6	2.7
Average HH Income	\$52,735	\$69,634	\$72,622
Average House Value	\$155,558	\$248,901	\$253,671

2020 American Community Survey (ACS)

We obtained the information above from sources we believe to be reliable. However, we have not verified its accuracy and make no guarantee, warranty or representation about it. It is submitted subject to the possibility of errors, omissions, change of price, rental or other conditions, prior sale, lease or financing, or withdrawal without notice. We include projections, opinions, assumptions or estimates for example only, and they may not represent current or future performance of the property. You and your tax and legal advisors should conduct your own investigation of the property and transaction.

**SALMONSEN GROUP**  
 Executive Broker  
 O: 479.231.1355  
 C: 479.330.1250  
 sgrleadmanager@gmail.com  
 AR #EB00066512

**KW COMMERCIAL**  
 201 SW 14th St.  
 Suite 203  
 Bentonville, AR 72712

Each Office Independently Owned and Operated [salmonsengroup.com](http://salmonsengroup.com)