

Office Space for Lease

SVEA HOUSE | PRIME WESTLAKE LOCATION

1749-1751 DEXTER AVE N, SEATTLE, WA 98109



Space Highlights



SECOND FLOOR: 3,778 SF

Lease Rate: \$18.00/SF/YR + NNN

Large conference room

Offices with built-ins & an IT/server room

Spacious reception/waiting area

Breakroom & restrooms with shower

Scenic water views

The information contained herein was obtained from sources believed reliable; however, ORION Commercial Partners LLC makes no guarantees, warranties or representations as to the completeness or accuracy thereof. The presentation of this property is submitted subject to errors, omissions, change of price or conditions prior to sale or lease, or withdrawal without notice.

FOR MORE INFO
CONTACT

BOJIDAR GABROVSKI
JACK DEANE
JACK FRANZ

bgabrovski@orioncp.com
jdeane@orioncp.com
jfranz@orioncp.com

847.275.8474
206.707.1315
925.482.7232

1218 Third Ave, Suite 2200
Seattle, WA 98101
www.orioncp.com

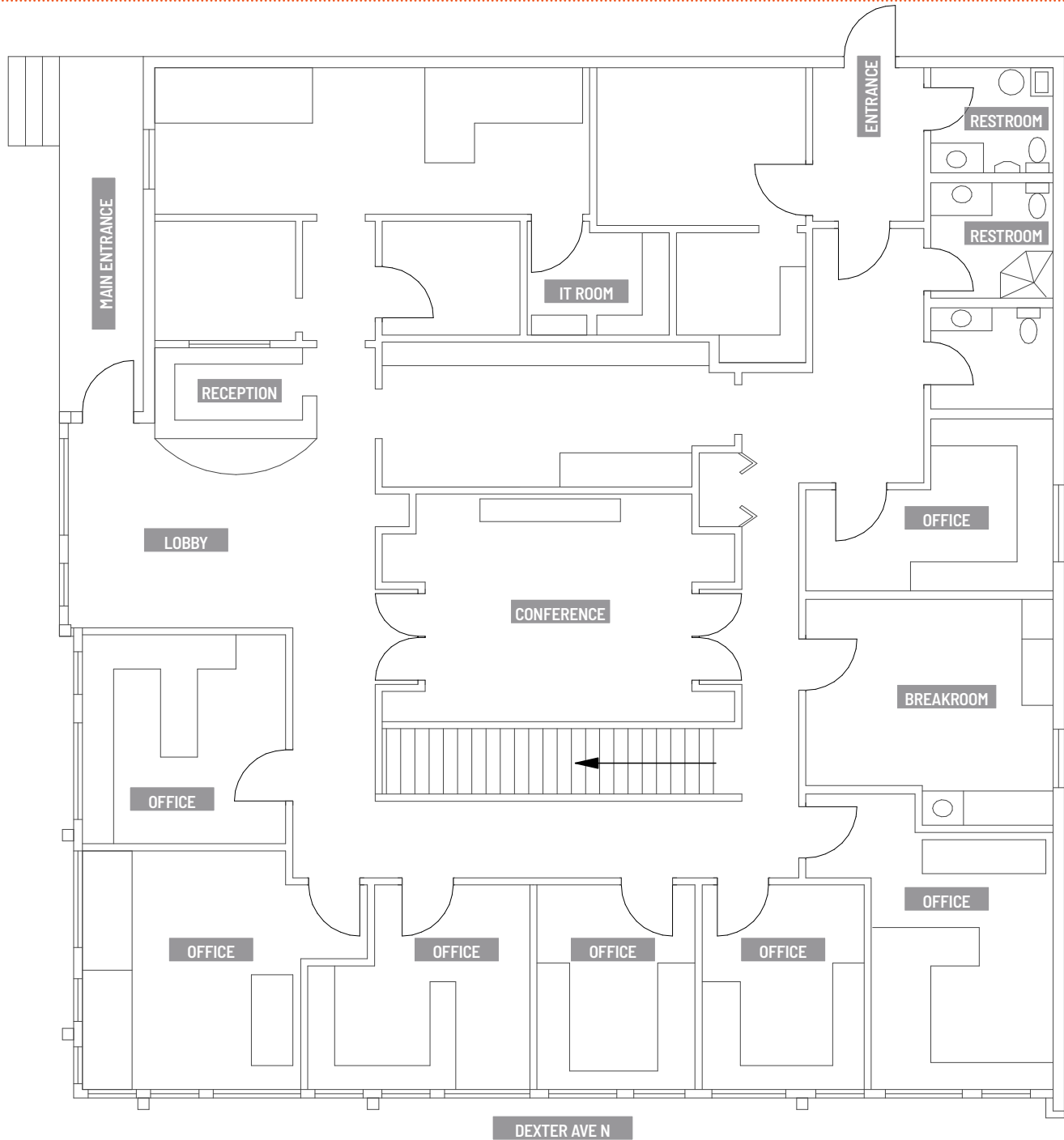
ORION
COMMERCIAL PARTNERS

Office Space for Lease

SVEA HOUSE | PRIME WESTLAKE LOCATION

1749-1751 DEXTER AVE N, SEATTLE, WA 98109

Second Floor | 3,778 SF



FOR MORE INFO
CONTACT

BOJIDAR GABROVSKI
JACK DEANE
JACK FRANZ

bgabrovski@orioncp.com
jdeane@orioncp.com
jfranz@orioncp.com

847.275.8474
206.707.1315
925.482.7232

1218 Third Ave, Suite 2200
Seattle, WA 98101
www.orioncp.com

ORION
COMMERCIAL PARTNERS