

FULLY FENCED/SECURED, GRAVELED & ILLUMINATED

# Rare Eastside IOS / Contractor Yard Opportunity



**14515 NE 87TH ST  
REDMOND, WA 98052**

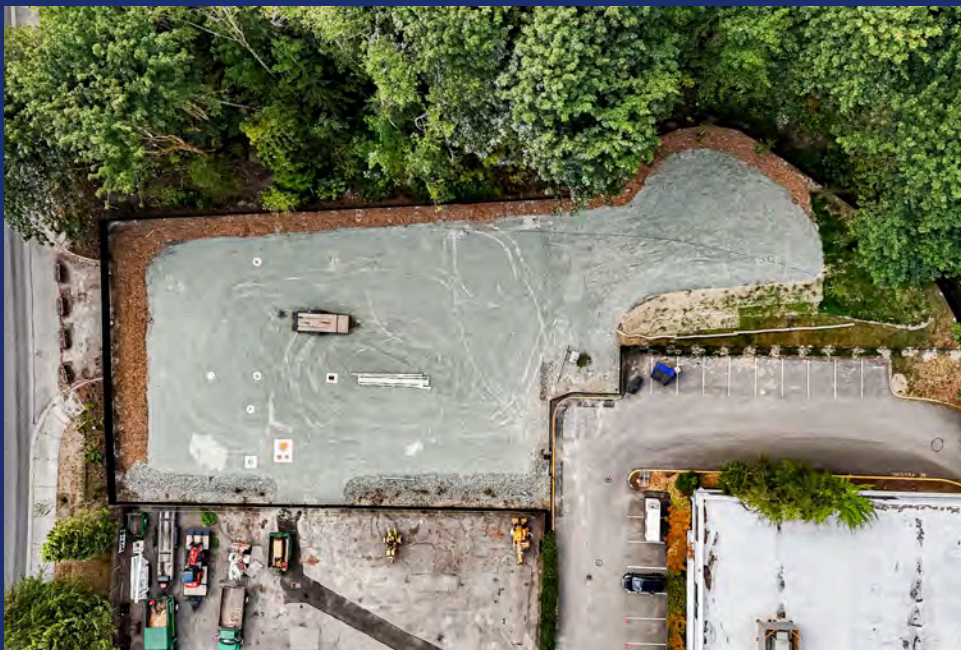
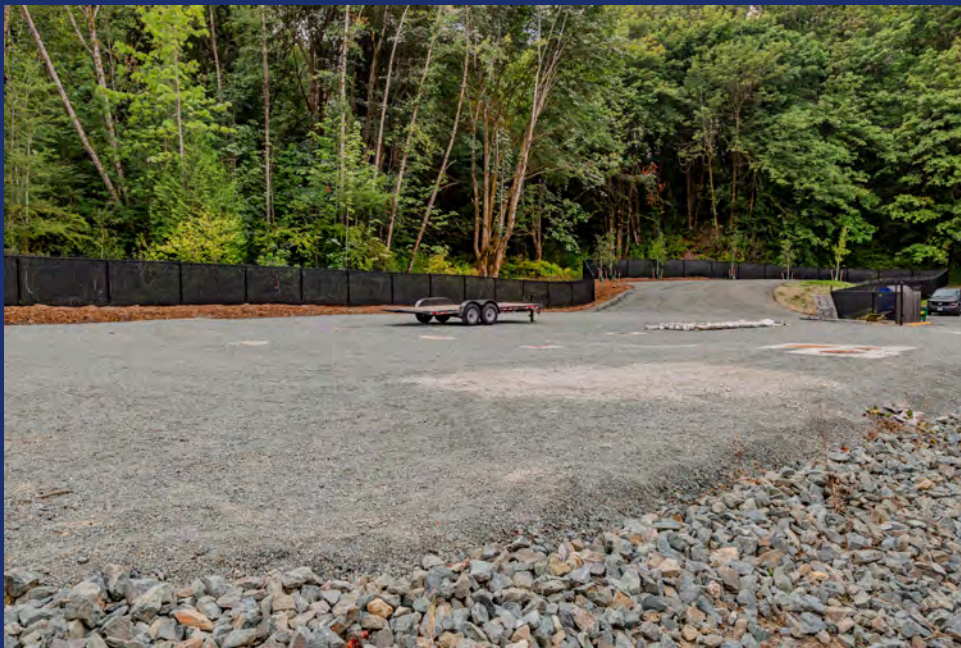


**KYLE WALDERHAUG**

 **(425) 478-5683**

**KYLE@NWRETAIL.COM**





- **Approximately 23,000 SF**
- **Asking Rate: \$0.45/SF/Month (Gross) + Electricity**
- **Available NOW**
- **Power available: 100A 480/277V 3-phase plus 225A 208/120V 3-phase optional standby power/generator setup**
- **Private automated vehicular gate access**
- **Strategic Redmond location with immediate Eastside access**
- **Efficient access to 520, I-405, and regional arterials**
- **Ideal for contractors, fleet-based users, and service businesses**

*This information is provided from reliable sources without any guarantee of accuracy. Prospective Buyers or Tenants should independently verify all material matters. All designs and materials are the property of Northwest Retail Partners and unauthorized use is prohibited.*

VALLEY

Willows Golf Course

# REDMOND, WA

Overlake Church

NE 95th St

Willows Rd NE

NE 90th St

151st Ave NE

148th Ave NE

City of Redmond  
City Hall

NE 85th St

NE 84th St

148th Ave NE

Willows Rd NE

154th Ave NE

154th Ave NE

Redmond Way

149th Pl NE

Redmond Way

NE 77th St

10th Pl NE

Samman

