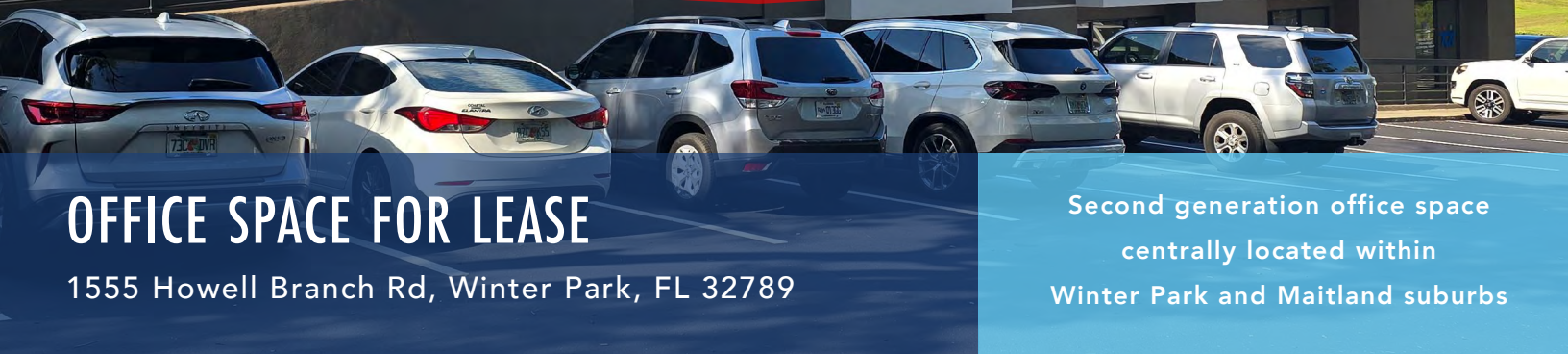


**MOVE-IN READY
CORNER
UNIT**



OFFICE SPACE FOR LEASE

1555 Howell Branch Rd, Winter Park, FL 32789

Second generation office space
centrally located within
Winter Park and Maitland suburbs

PROPERTY HIGHLIGHTS

- Fronting Howell Branch Road, a major neighborhood thoroughfare.
- Excellent ingress/egress and fully accessible East and Westbound.
- Small suites readily available.
- Proximity to highly affluent neighborhoods, excellent schools and dense retail.
- Numerous capital improvements completed.



AVAILABILITY:

Suite C-201: 1,388 ± RSF
Rate: \$17.50/sf NNN
Available Immediately

**Last unit available
Move in ready corner unit**



LOCATION:

Conveniently located on
Howell Branch Rd with easy
access to SR 436



PARKING RATIO:

3:1000



HARBERT
REALTY SERVICES

JOSH SMITH, SIOR
jsmith@harbertrealty.com | 407.739.8602

DAMIEN MADSEN
dmadsen@harbertrealty.com | 407.256.2844

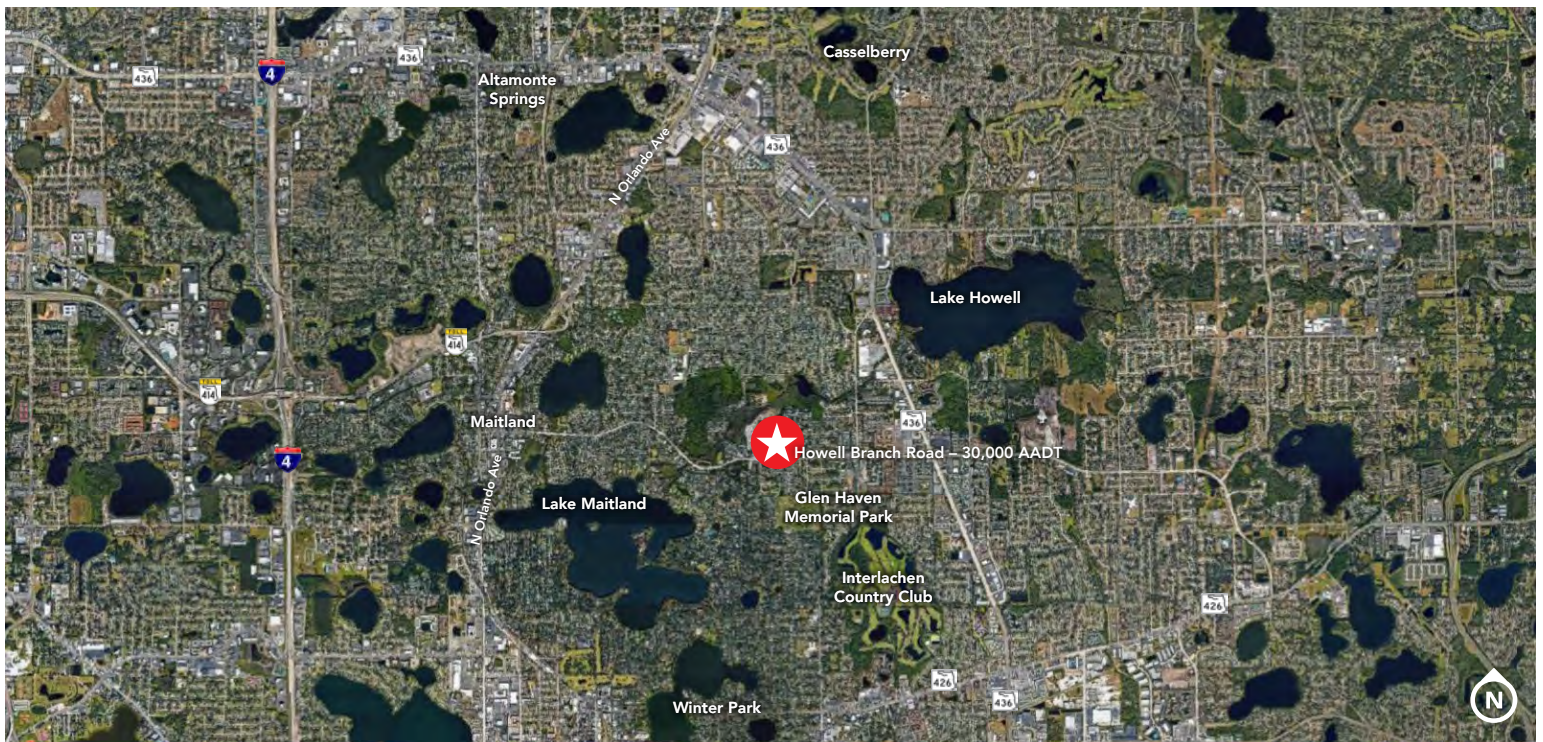
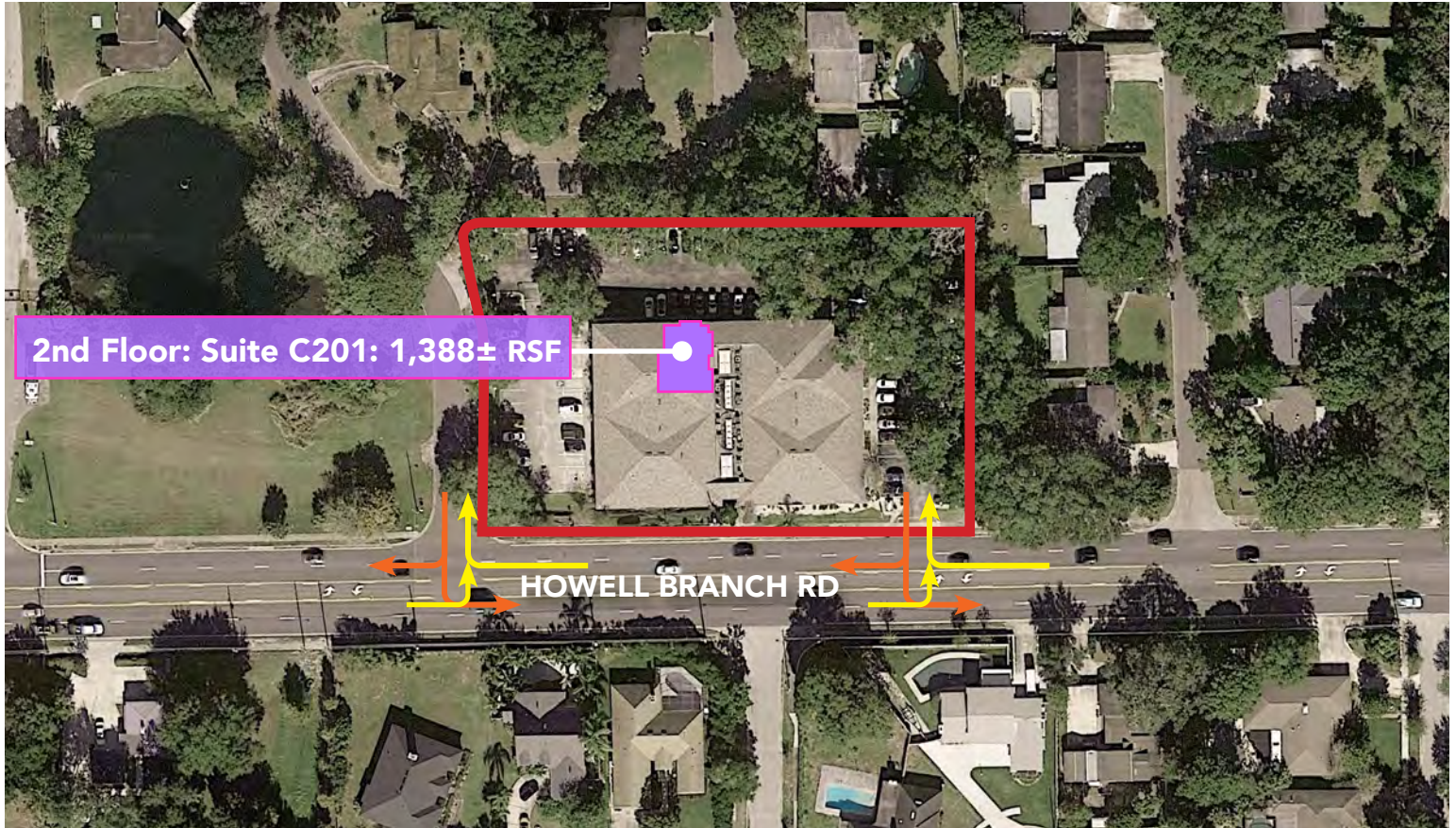
For More Information: HarbertRealty.com
400 S Park Ave, Suite 225, Winter Park, FL 32789

The information contained herein has been obtained from sources deemed reliable, however, HRS makes no guarantees, warranties or representation as to its completeness or accuracy thereof. The presentation of this property is submitted subject to errors, omissions, change of price or conditions, prior to sale or lease or withdrawal without notice.

OFFICE SPACE FOR LEASE

1555 Howell Branch Rd, Winter Park, FL 32789

LOCATION



HARBERT
REALTY SERVICES

JOSH SMITH, SIOR

jsmith@harbertrealty.com | 407.739.8602

DAMIEN MADSEN

dmadsen@harbertrealty.com | 407.256.2844

For More Information: HarbertRealty.com

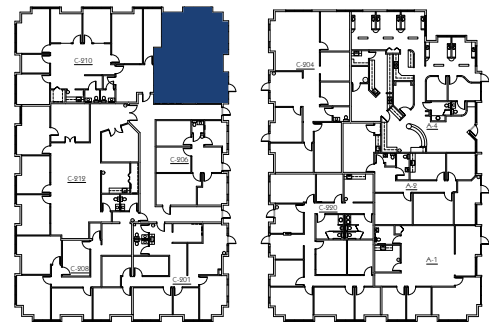
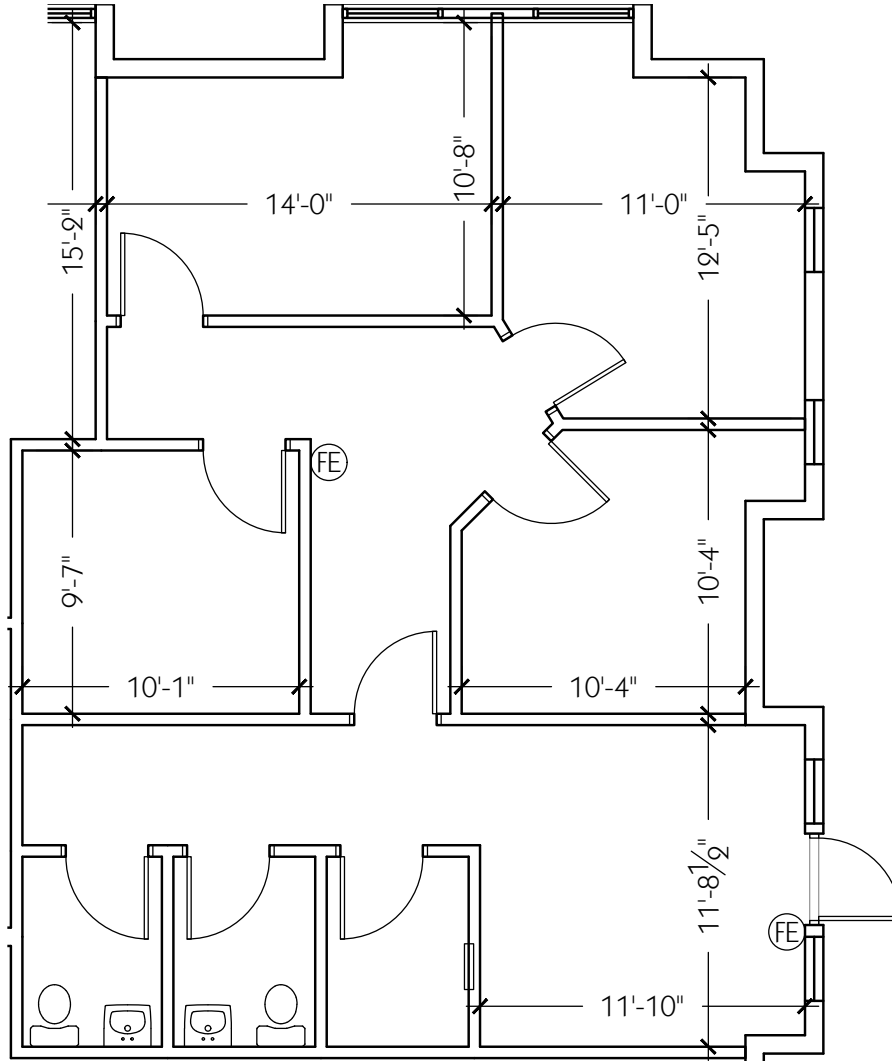
400 S Park Ave, Suite 225
Winter Park, FL 32789

OFFICE SPACE FOR LEASE

1555 Howell Branch Rd, Winter Park, FL 32789

SECOND FLOOR

Suite C-201 - 1,388± rsf
Move in ready corner unit



JOSH SMITH, SIOR
jsmith@harbertrealty.com | 407.739.8602

DAMIEN MADSEN
dmadsen@harbertrealty.com | 407.256.2844

For More Information: HarbertRealty.com
400 S Park Ave, Suite 225
Winter Park, FL 32789