

FOR LEASE

335 BRYANT STREET, PALO ALTO

SUITE 200: ±3,711 SQ. FT. OFFICE



**PREMIER
PROPERTIES**
COMMERCIAL
REAL ESTATE

BRAD EHIKIAN
Partner
dre license #01736391
| 650.618.3001
| brad.ehikian@prprop.com

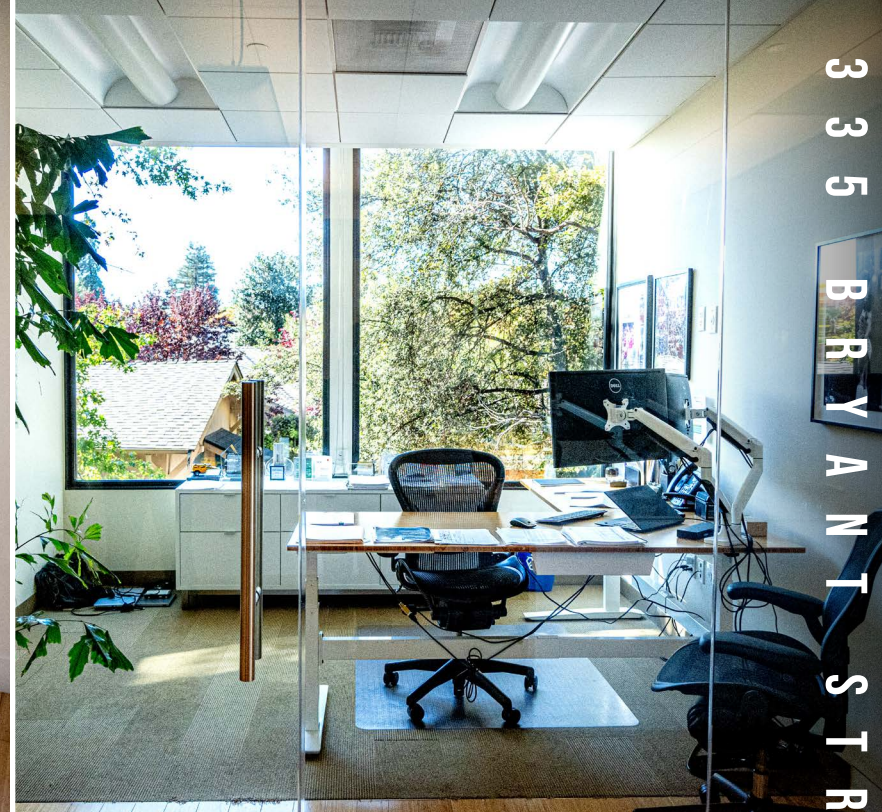
JON GOLDMAN
Partner
dre license #01295503
| 650.618.3003
| jon.goldman@prprop.com

JESSE EBNER
Vice President
dre license #02055989
| 650.618.3017
| jesse.ebner@prprop.com

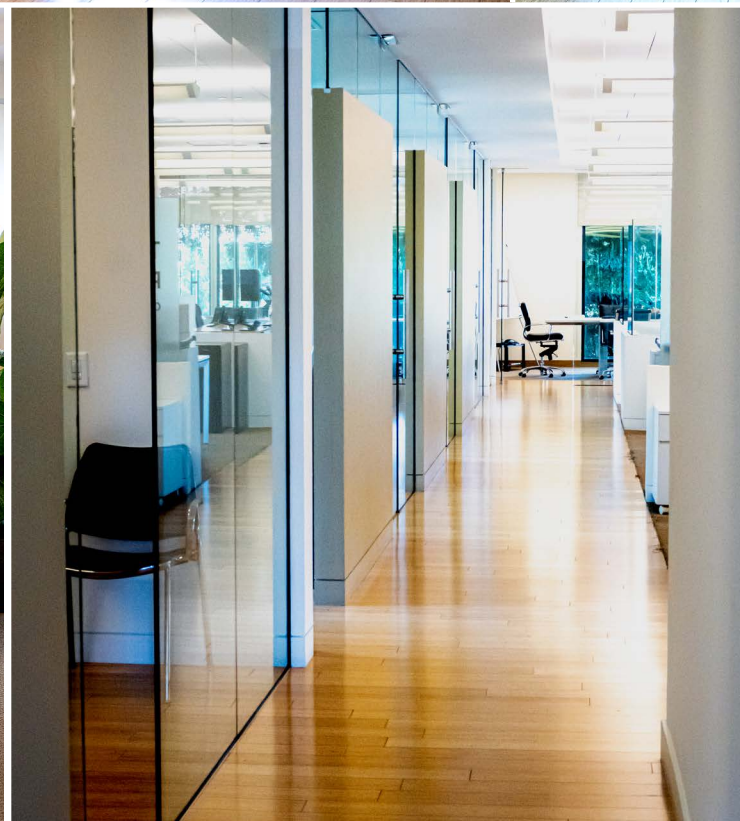
PROPERTY HIGHLIGHTS

- ▀ Suite 200: ±3,711 Sq. Ft. Office
- ▀ Second Floor Suite with Excellent Window Line
- ▀ Class A Office Building in Downtown Palo Alto
- ▀ Suitable for Professional Services Tenants
- ▀ Private Office Build-Out
- ▀ Elevator Served
- ▀ In-Suite Kitchenette & Restroom
- ▀ Surrounded by Downtown Restaurants & Amenities
- ▀ Walking Distance to CalTrain Station
- ▀ Available October 1, 2026

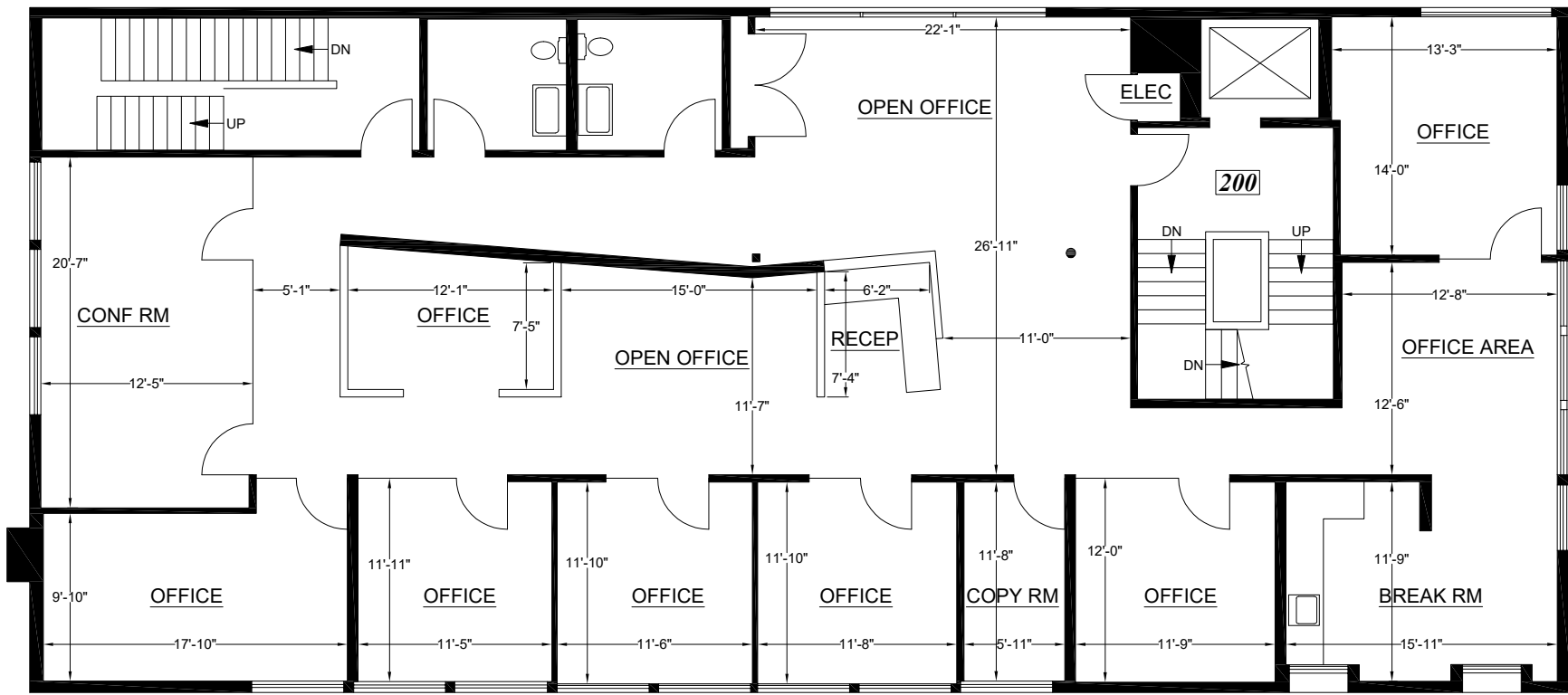
INTERIOR PHOTOS



335 BRYANT STREET, PALO ALTO



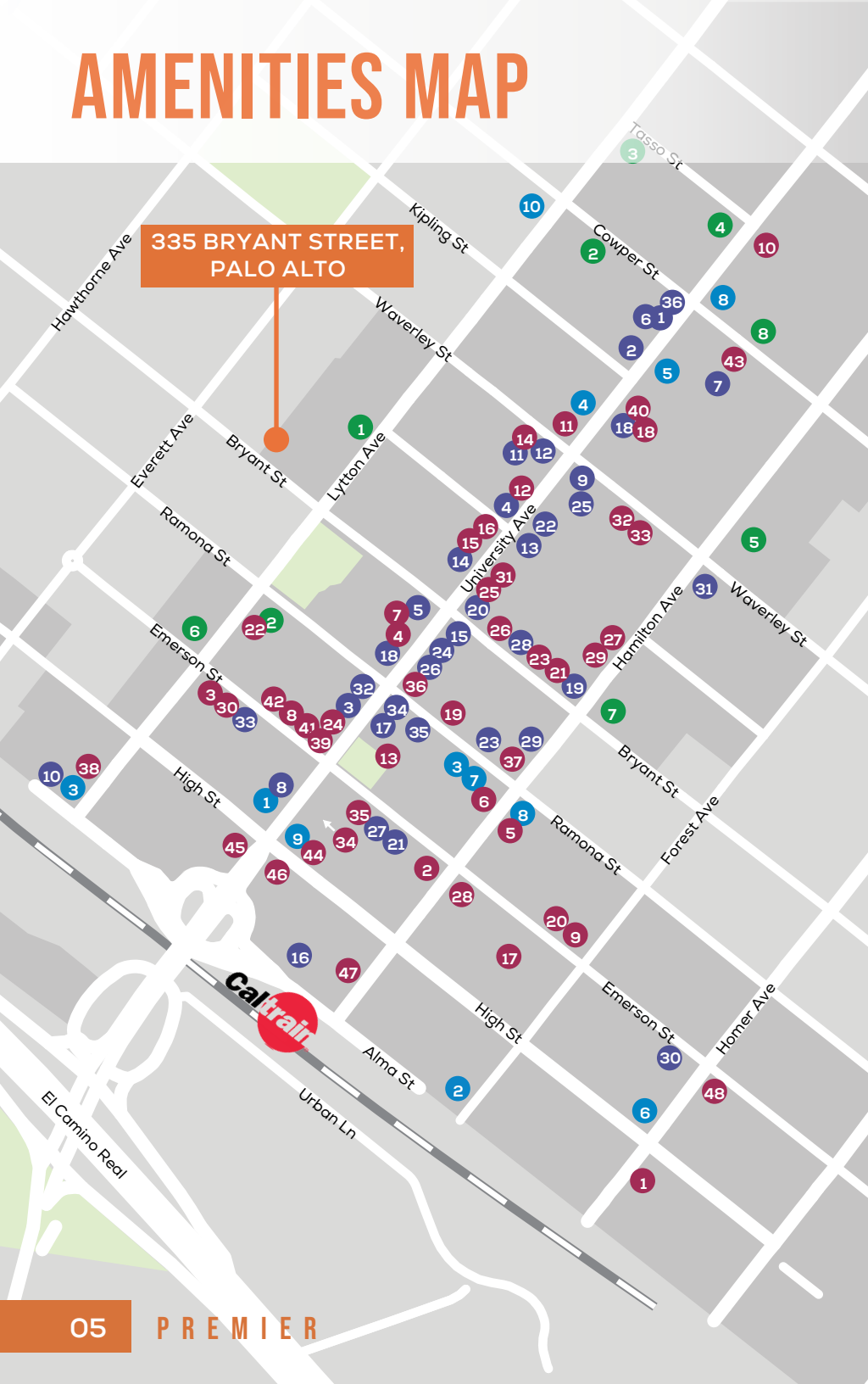
FLOOR PLAN



P

AMENITIES MAP

335 BRYANT STREET,
PALO ALTO



SHOPPING / SERVICES

- 1 AT&T Store
- 2 Footwear Etc
- 3 Verizon
- 4 Design Within Reach
- 5 Miniso
- 6 Cielo
- 7 el PRADO Hotel
- 8 Palo Alto Bicycles
- 9 Chico's
- 10 E-bike Annex
- 11 Visual Comfort & Co
- 12 The RealReal
- 13 Apple Store
- 14 Brandy Melville
- 15 Keen Garage
- 16 Patagonia
- 17 Fjallraven
- 18 Arnoldi Jewelers
- 19 UPS Store
- 20 Artsy Rugs
- 21 Bells Books
- 22 CVS
- 23 Warby Parker
- 24 Lenscrafters
- 25 Avocado Green Mattress
- 26 The Shade Store
- 27 Mac's Smoke Shop
- 28 Timothy Adams
- 29 Scandia Home
- 30 Whole Foods
- 31 US Postal Service
- 32 Stanford Theatre
- 33 Aquarius Theatre
- 34 Juut Salon
- 35 Mansoor Fine Jewelers
- 36 Solidcore

RESTAURANTS

- 1 St Michael's Alley
- 2 Palo Alto Creamery
- 3 Evvia
- 4 Orens Hummus
- 5 Reposado
- 6 Osteria Toscana
- 7 Local Union
- 8 Rangoon Ruby
- 9 Pizzeria Delfina
- 10 Tamarine
- 11 Yayoi Palo Alto
- 12 Crepevine
- 13 Pizza My Heart
- 14 Marugame Udon
- 15 Bevri
- 16 Khazana by Chef Sanjeev Kapoor
- 17 Tacolicious
- 18 SOMSOMI
- 19 Nola
- 20 Buca di Beppo
- 21 Zola
- 22 Macarena
- 23 Ramen Nagi
- 24 Steam
- 25 Curry Pizza House
- 26 Son & Garden
- 27 New York Pizza
- 28 Nobu
- 29 Curry Up Now
- 30 The Patio
- 31 La Corneta Taqueria
- 32 Ethel's Fancy
- 33 Tai Pan
- 34 Sprout Café
- 35 Bare Bowls
- 36 Salt and Straw
- 37 sweetgreen
- 38 Darbar Indian Cuisine
- 39 Scoop
- 40 Sushirrito
- 41 Tane Vegan Izakaya
- 42 Gelato Classico
- 43 Il Fornaio
- 44 Sweet Maple
- 45 New York New York Sandwiches
- 46 Arya Steakhouse
- 47 San Agus Cocina Urbana
- 48 Taverna

BANKS

- 1 Heritage Bank of Commerce
- 2 Comerica Bank
- 3 Bank of America
- 4 Stanford Credit Union
- 5 Wells Fargo
- 6 City National Bank
- 7 Chase Bank
- 8 Bank of The West

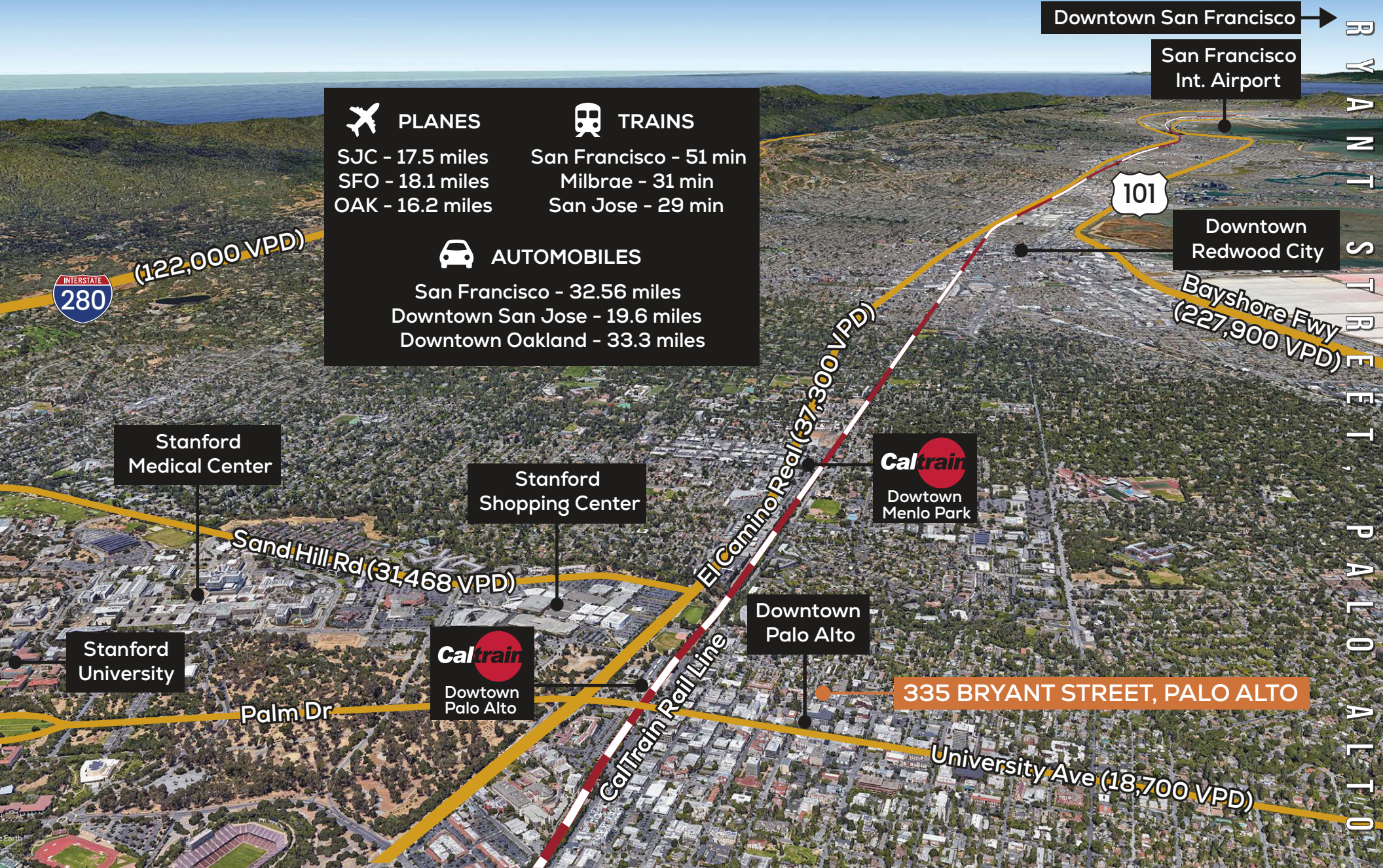
COFFEE

- 1 Starbucks
- 2 Philz Coffee
- 3 Coupa Cafe
- 4 Café Venetia
- 5 Blue Bottle Café
- 6 Peets
- 7 Bistro Maxine
- 8 Joe & the Juice
- 9 Verve
- 10 Mademoiselle Colette

TRANSPORTATION MAP

3
3
5
B
R
Y
A
N
T
S
T
R
E
E
T
,
P
A
L
O
A
L
T
O

✈️ PLANES	🚂 TRAINS
SJC - 17.5 miles	San Francisco - 51 min
SFO - 18.1 miles	Milbrae - 31 min
OAK - 16.2 miles	San Jose - 29 min
🚗 AUTOMOBILES	
San Francisco - 32.56 miles	
Downtown San Jose - 19.6 miles	
Downtown Oakland - 33.3 miles	



Downtown San Francisco

San Francisco Int. Airport

Downtown Redwood City

Bayshore Fwy (227,900 VPD)

INTERSTATE 280

(122,000 VPD)

101

El Camino Real (37,300 VPD)

Stanford Medical Center

Stanford Shopping Center

Caltrain Downtown Menlo Park

Sand Hill Rd (31,468 VPD)

Stanford University

Caltrain Downtown Palo Alto

Downtown Palo Alto

335 BRYANT STREET, PALO ALTO

Palm Dr

University Ave (18,700 VPD)

Caltrain Rail Line

DOWNTOWN PARKING MAP



DEMOGRAPHICS



ONE-MILE POPULATION: 19,462

MEDIAN AGE

41.7

AVERAGE HOUSEHOLD SIZE



FAMILIES



FAMILIES

3,992



Average Household Income

\$252,586

Average Household Size: 2.3 | Owner Occupied Housing Units: 3,499 | Renter Occupied Housing Units: 4,810 | Median Household Income: \$179,779 | Average Household Income: \$252,586

MAJOR EMPLOYERS:

Data for all businesses in area	1 mile
Total Businesses:	15,116
Total Employees:	221,568
Total Residential Population:	19,462
Employee/Residential Population Ratio (per 100 Residents)	99



FOR LEASE

335 BRYANT STREET, PALO ALTO

SUITE 200: ±3,711 SQ. FT. OFFICE



**PREMIER
PROPERTIES**
COMMERCIAL
REAL ESTATE

BRAD EHIKIAN

Partner
dre license #01736391
| 650.618.3001
| brad.ehikian@prprop.com

JON GOLDMAN

Partner
dre license #01295503
| 650.618.3003
| jon.goldman@prprop.com

JESSE EBNER

Vice President
dre license #02055989
| 650.618.3017
| jesse.ebner@prprop.com