

Deep Creek RV Resort

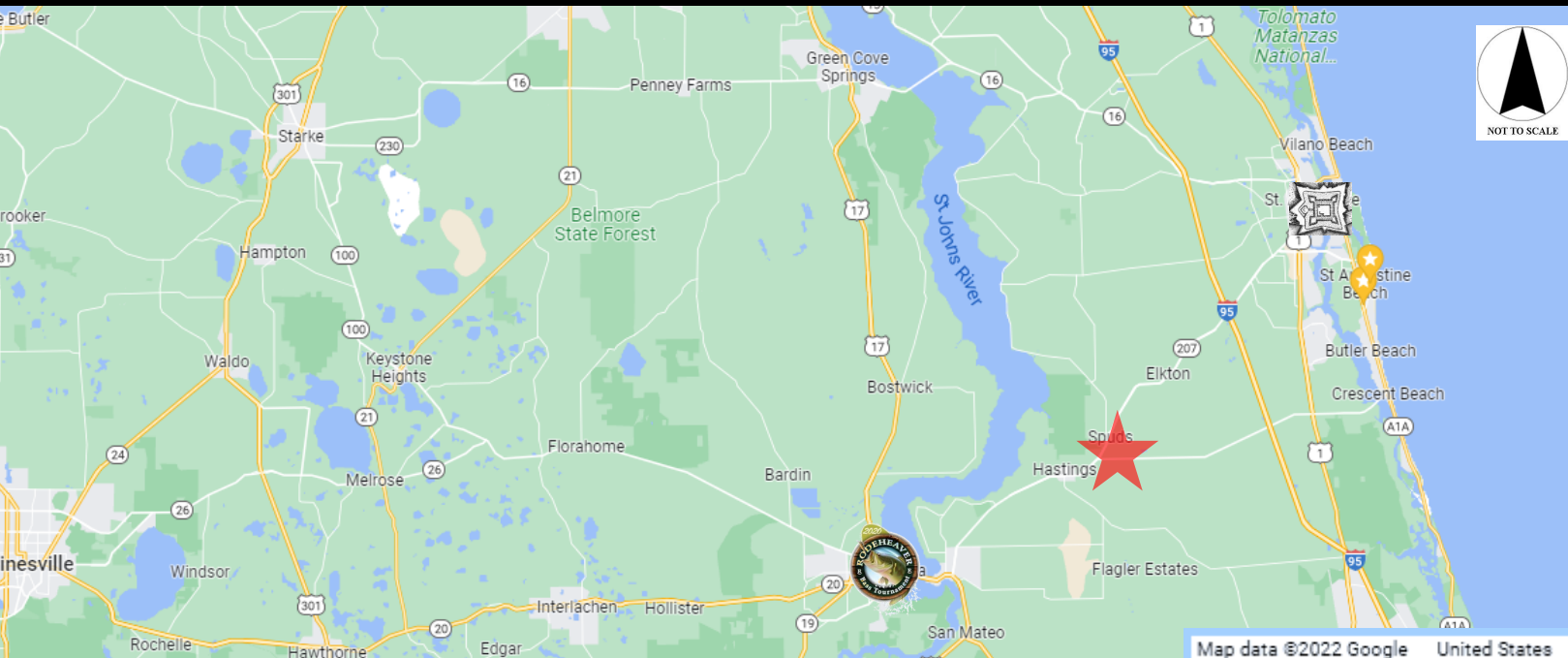
7871 STATE ROAD 207

Elkton | St. Johns County, FL

Price:	\$4,900,000
Lot Size:	± 69.83 Acres
Zone:	CR (Commercial Rural) Zone Ord: 2018-31 OR (Open Rural)
Current Use:	Vacant Comm. / Res.
Future Land Use:	Rural Commercial Zone Ord: 2018-31 Residential-B
Frontage:	± 930 Ft. SR-207

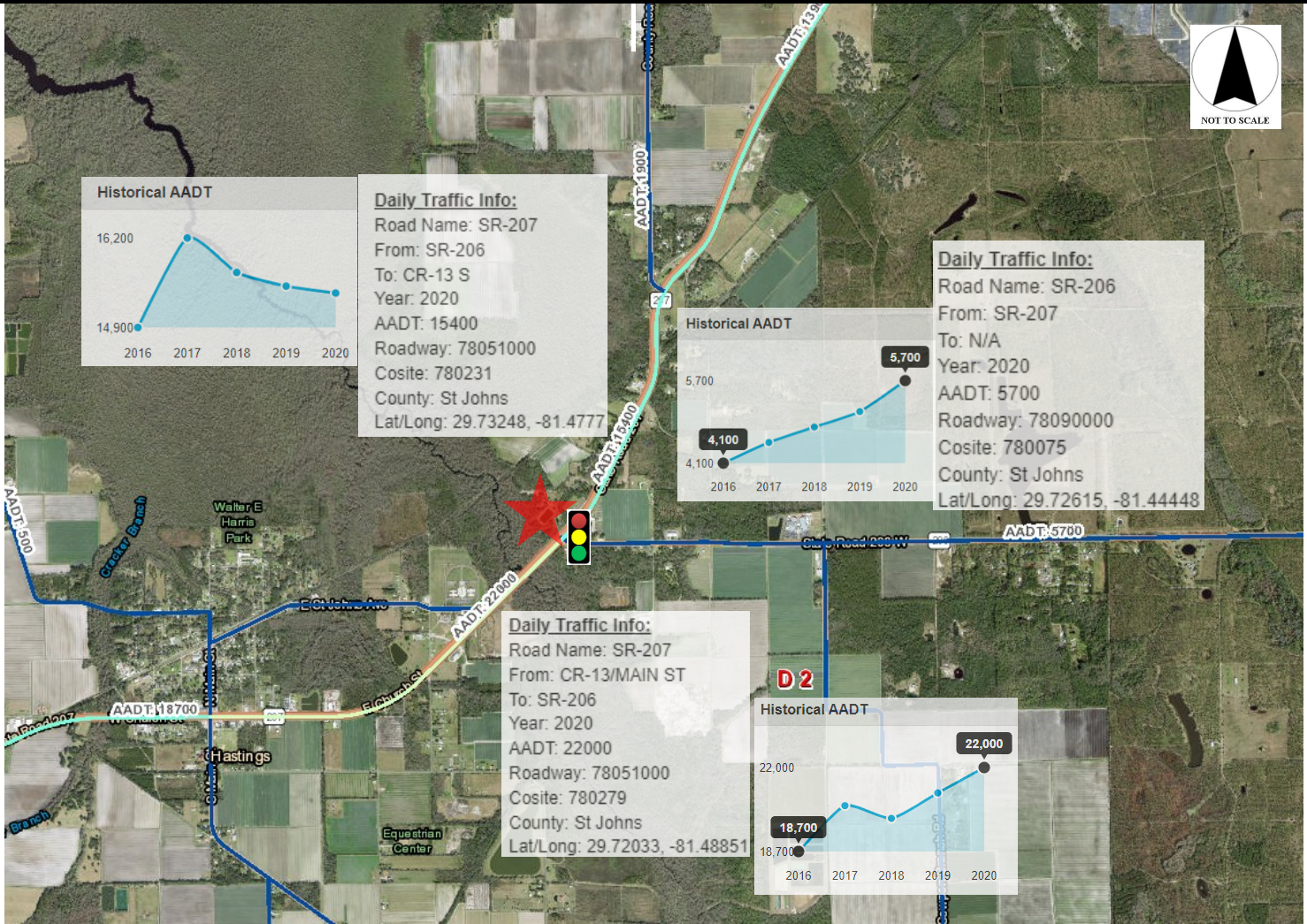
RV Resort development opportunity permitted and approved for 90 sites. Located at the entry corridor to St. Augustine and associated attractions. Access to I-95 is accessible by direct 4-lane route on SR-207 (± 9.5 miles) or direct 2-lane route on SR-206 (± 8.5 miles). Resort offers substantial natural treed preserve and classic Florida landscape with private boardwalk to Deep Creek. The Florida's Rails-to-Trails (part of Florida State Park System) along the northwest boundary of the Resort. This is the perfect location for 'base camp' for guests who want to take advantage of all St. Johns County has to offer from river fishing, deep sea fishing charters, biking, historic sites, pristine beaches and more.

Location:

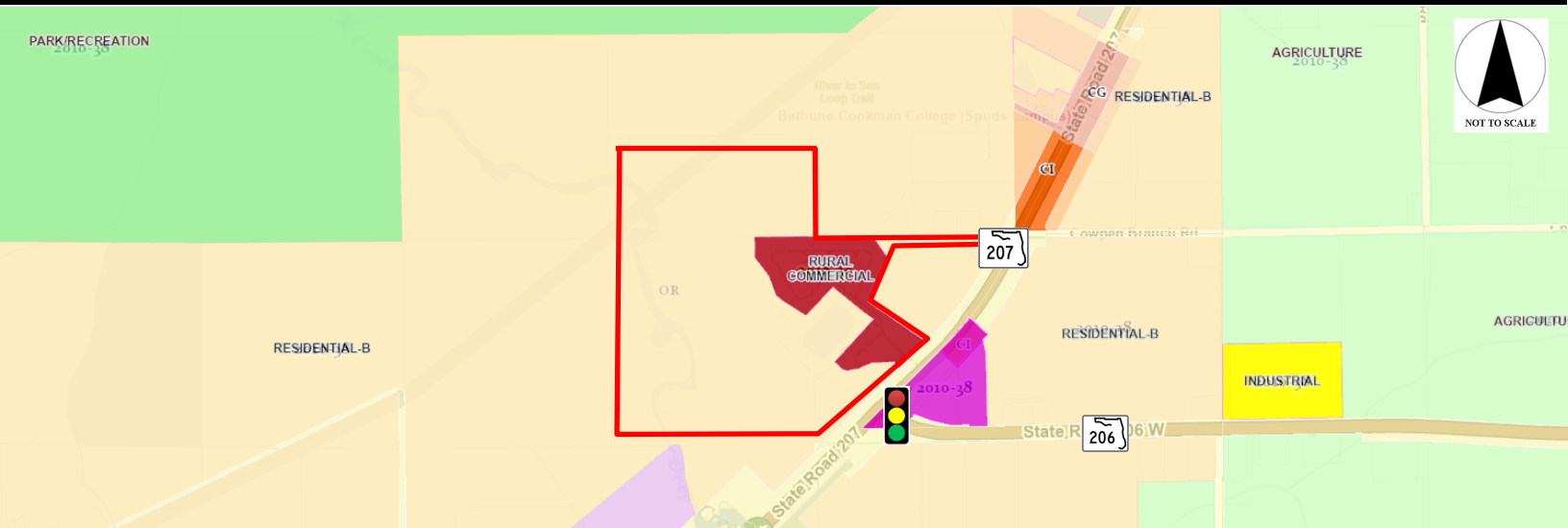


88 Riberia Street, Suite 360, St. Augustine, FL 32086 | 904.429.9953

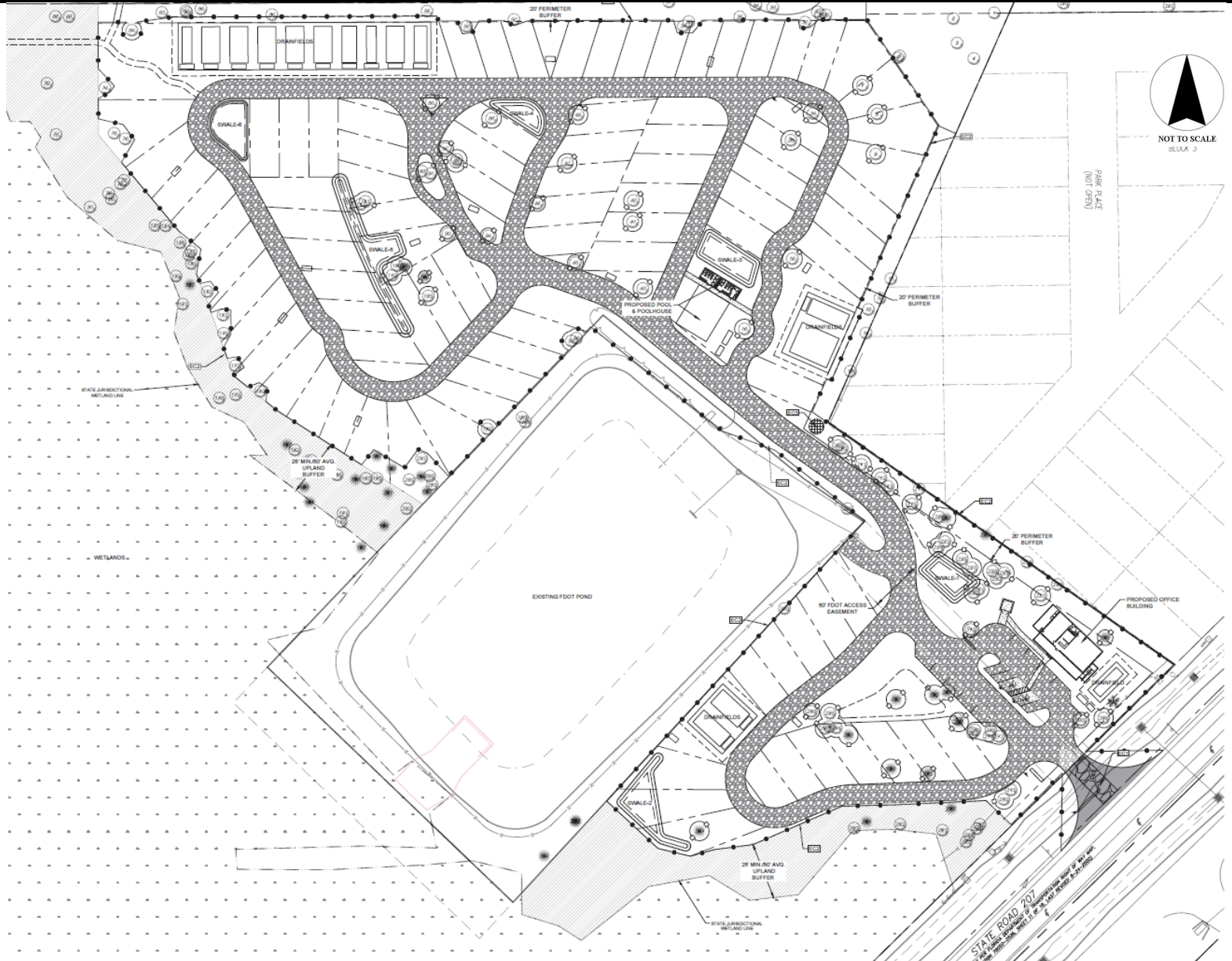
Traffic (FDOT):



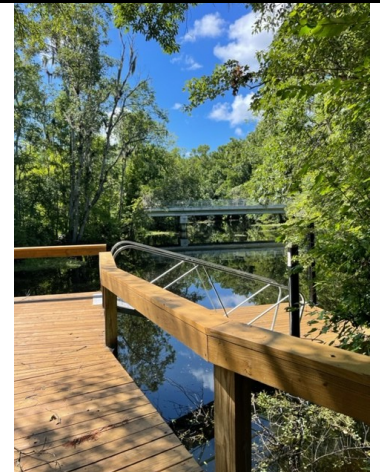
Zoning Map (St. Johns County):



Site Plan:



Boardwalk:



Rails to Trails:

The Palatka to St. Augustine State Trail is a multi-use recreational trail along a corridor that stretches through St. Johns and Putnam counties.

This 12-foot-wide, 19-mile-long paved trail runs through beautiful agricultural landscapes and scenic routes. You can begin your adventure from several access points. Starting in St. Johns County and traveling into Putnam County tends to be the popular route due to the ample parking at the eastern trailheads and the opportunity to visit the designated [Florida Trail Town of Palatka](#) mid-trip.

