



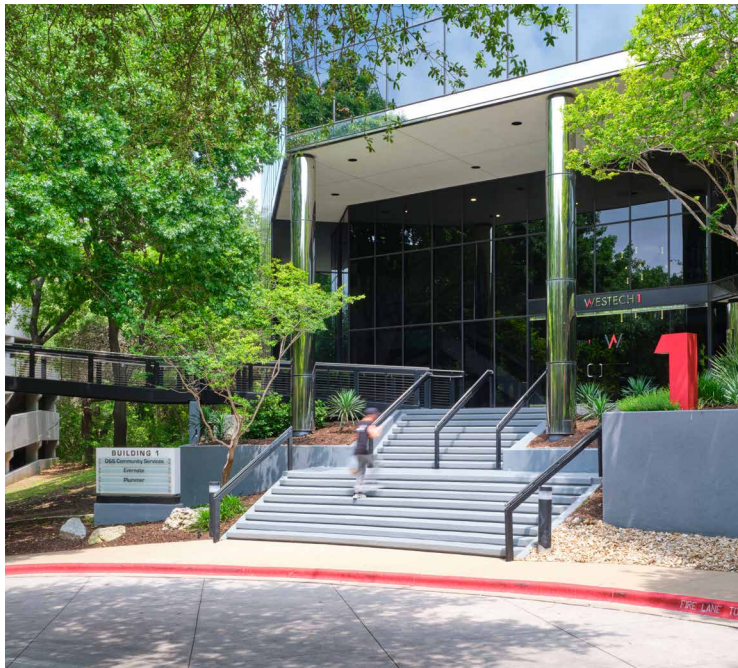
Space for Recharge

175,557 RSF // 4 BUILDING CAMPUS

Westech 360, a four-building, Class A office campus on North Capital of Texas Highway Loop 360 in Northwest Austin, offers newly designed, move-in-ready suites with access to numerous surrounding business centers and shopping and dining hubs including The Arboretum, one of Austin's top retail destinations, just a two-minute drive away.

THE OVER 175,000 SF CAMPUS IS WELL-SERVED BY TWO HIGHWAYS, ENJOYS EXCELLENT INGRESS AND EGRESS AT A LIGHTED INTERSECTION AND HAS PROMINENT VISIBILITY FROM LOOP 360.

TAKE A LOOK FROM A BIRD'S-EYE VIEW



DELIVERING Q2 2026

Move-In Ready Spec Suites

Experience turnkey workspaces designed for the way you work today. Our new, fully built-out spec suites make moving in effortless. Just bring your team and get started.

Ranging from 3,276-4,239 SF, each suite features modern finishes, efficient layouts, and thoughtful design to support productivity and collaboration.

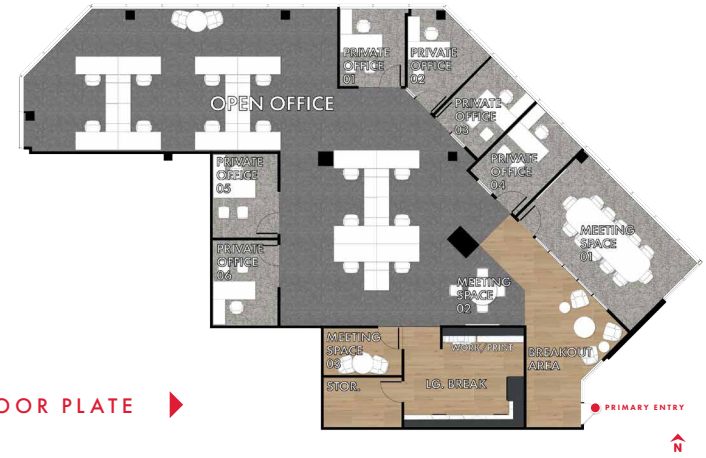
[CLICK TO VIEW THE FLOORPLANS](#)

[SPEC SUITE 1250](#)

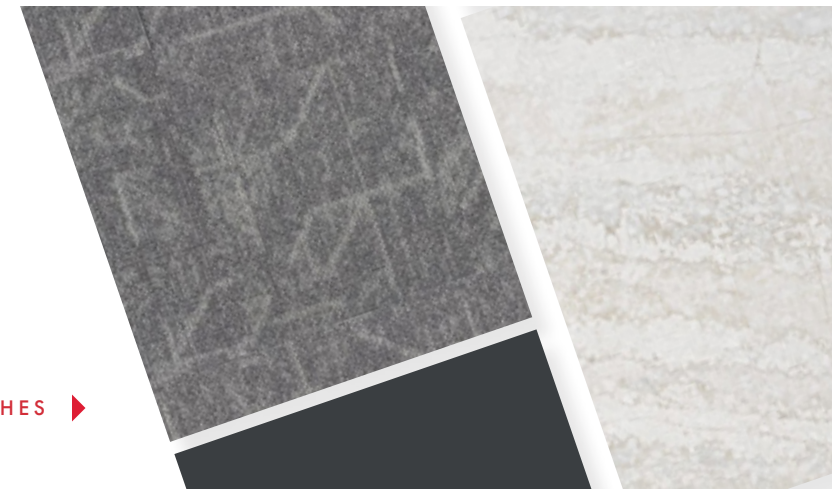
[SPEC SUITE 2220](#)

[SPEC SUITE 3200](#)

[SPEC SUITE 3220](#)



[SAMPLE FLOOR PLATE](#)



[PREVIEW THE FINISHES](#)

175,557 RSF | 4 BUILDING CAMPUS

Providing the Perfect Environment

CLICK TO VIEW AVAILABILITIES FOR EACH BUILDING

WESTECH 1

[VIEW AVAILABILITIES](#)

WESTECH 2

[VIEW AVAILABILITIES](#)

WESTECH 3

[VIEW AVAILABILITIES](#)

WESTECH 4

[VIEW AVAILABILITIES](#)



Building Features & Amenities

- Newly Renovated Lobbies
- Reservable Common Conference Center
- Fitness Center with Shower Facilities
- On-site Food & Beverage with Lunchdrop Service
- Rotating Food Trucks



CONFERENCE CENTER

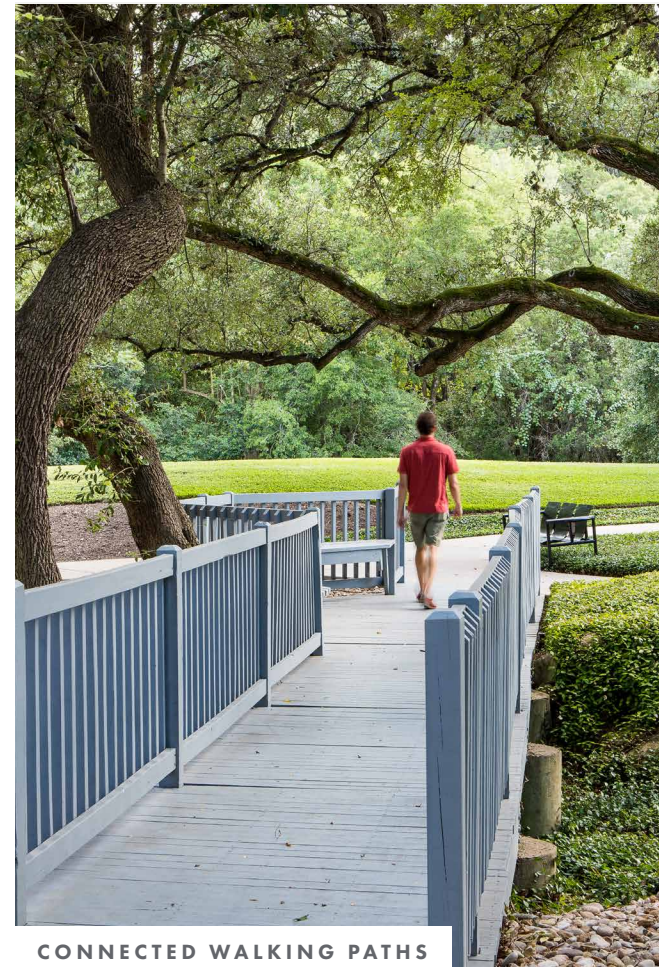


OUTDOOR PATIO SEATING



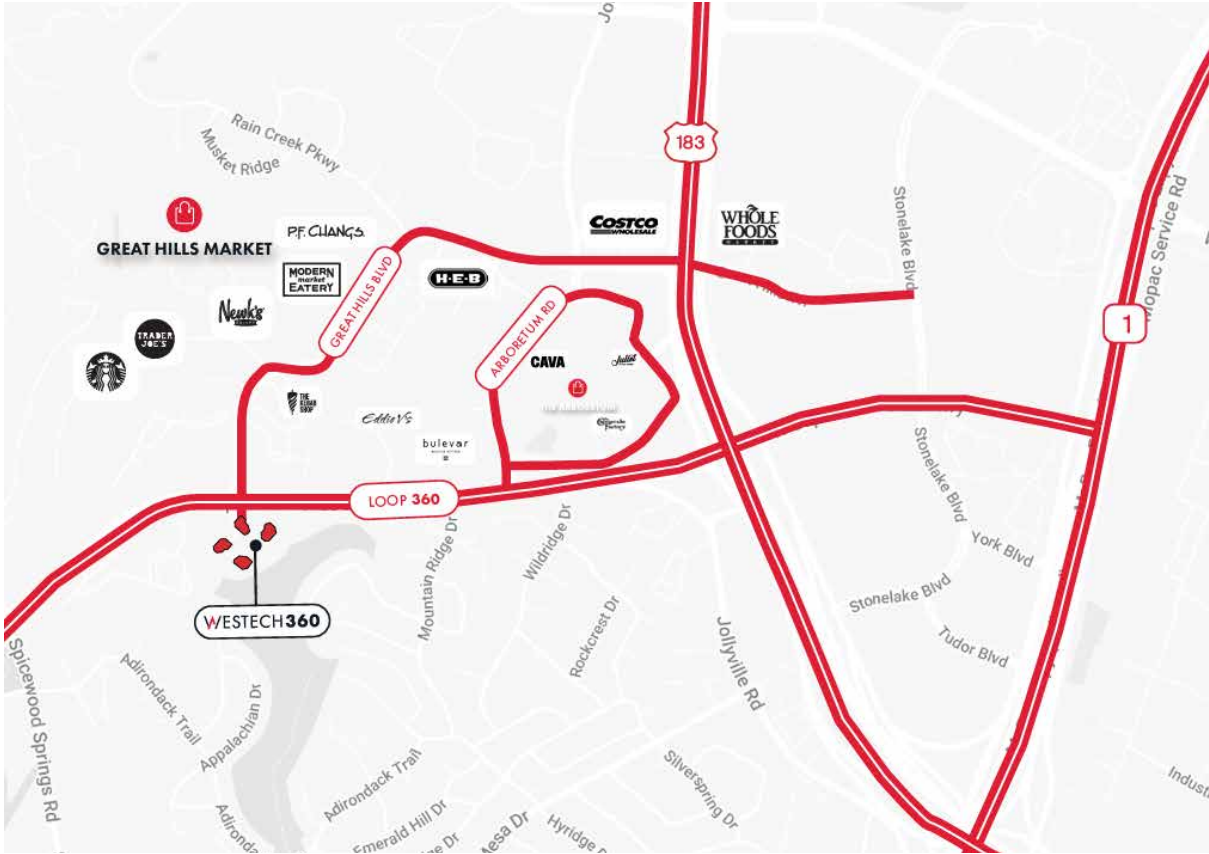
FITNESS CENTER

NEWLY RENOVATED LOBBIES



CONNECTED WALKING PATHS

- Outdoor Gathering Area
- Excellent Ingress/Egress at Lighted Intersection
- 3.5:1000 Structured Parking Garage
- Bipolar Ionization HVAC
- On-site Property Management
- Monument Signage Opportunities



Premier Location

RIGHT OFF OF
LOOP 360

EXPLORE THE NEIGHBORHOOD

DRIVE TIMES
(MINUTES)

1

BULL CREEK
GREENBELT

2

THE
ARBORETUM

7

PENNYBACKER BRIDGE
OVERLOOK

10

THE
DOMAIN

12

Q2 STADIUM

15

AUSTIN CBD





WESTECH360

VIEW THE CAMPUS



WESTECH360

 Transwestern

For leasing information, please contact:

BRANDON LESTER

512.314.3576

BRANDON.LESTER@TRANSWESTERN.COM

CONNOR ATCHLEY

512.314.3557

CONNOR.ATCHLEY@TRANSWESTERN.COM

CARLY LANGLEY

512.314.3991

CARLY.LANGLEY@TRANSWESTERN.COM