

RETAIL PROPERTY FOR SALE

# Highway View Plaza

1102-1104 Route 222,  
Cortland, NY 13045

OFFERING MEMORANDUM



**ASHLEY WARFIELD**  
Licensed Real Estate Salesperson  
607.745.8531  
awarfield@yaman.comm

**JEFFREY GUIDA**  
Licensed Associate Real Estate Broker  
315.727.9917  
jguida@yaman.comm

**YAMAN**  
COMMERCIAL



# TABLE OF CONTENTS

Retail Property For Sale

## TABLE OF CONTENTS

PROPERTY INFORMATION	3
PROPERTY SUMMARY	4
ADDITIONAL PHOTOS	5
FLOOR PLANS	6
LOCATION INFORMATION	7
LOCATION MAP	8
DEMOGRAPHICS	9
DEMOGRAPHICS MAP & REPORT	10
ADVISOR BIOS	11

## CONFIDENTIALITY & DISCLAIMER

All materials and information received or derived from Yaman Commercial its directors, officers, agents, advisors, affiliates and/or any third party sources are provided without representation or warranty as to completeness, veracity, or accuracy, condition of the property, compliance or lack of compliance with applicable governmental requirements, developability or suitability, financial performance of the property, projected financial performance of the property for any party's intended use or any and all other matters.

Neither Yaman Commercial its directors, officers, agents, advisors, or affiliates makes any representation or warranty, express or implied, as to accuracy or completeness of the any materials or information provided, derived, or received. Materials and information from any source, whether written or verbal, that may be furnished for review are not a substitute for a party's active conduct of its own due diligence to determine these and other matters of significance to such party. Yaman Commercial will not investigate or verify any such matters or conduct due diligence for a party unless otherwise agreed in writing.

EACH PARTY SHALL CONDUCT ITS OWN INDEPENDENT INVESTIGATION AND DUE DILIGENCE.

Any party contemplating or under contract or in escrow for a transaction is urged to verify all information and to conduct their own inspections and investigations including through appropriate third party independent professionals selected by such party. All financial data should be verified by the party including by obtaining and reading applicable documents and reports and consulting appropriate independent professionals. Yaman Commercial makes no warranties and/or representations regarding the veracity, completeness, or relevance of any financial data or assumptions. Yaman Commercial does not serve as a financial advisor to any party regarding any proposed transaction. All data and assumptions regarding financial performance, including that used for financial modeling purposes, may differ from actual data or performance. Any estimates of market rents and/or projected rents that may be provided to a party do not necessarily mean that rents can be established at or increased to that level. Parties must evaluate any applicable contractual and governmental limitations as well as market conditions, vacancy factors and other issues in order to determine rents from or for the property.

Legal questions should be discussed by the party with an attorney. Tax questions should be discussed by the party with a certified public accountant or tax attorney. Title questions should be discussed by the party with a title officer or attorney. Questions regarding the condition of the property and whether the property complies with applicable governmental requirements should be discussed by the party with appropriate engineers, architects, contractors, other consultants and governmental agencies. All properties and services are marketed by Yaman Commercial in compliance with all applicable fair housing and equal opportunity laws.

# Property Information

1102-1104 Route 222,  
Cortland, NY 13045



**ASHLEY WARFIELD**  
Licensed Real Estate Salesperson  
607.745.8531  
awarfield@yaman.comm

**JEFFREY GUIDA**  
Licensed Associate Real Estate Broker  
315.727.9917  
jguida@yaman.comm



# PROPERTY SUMMARY

Retail Property For Sale



## PROPERTY DESCRIPTION

Retail opportunity in a high-visibility strip center. This versatile space offers excellent frontage, strong daily traffic counts, and convenient access from major roadways. Home to the largest walk-in salon in town, the center serves a well-established residential and commercial trade area, making it ideal for a wide range of retail, service, or specialty uses. One unit occupied with a 2-year tenant lease at \$1,700.00 per month.

## PROPERTY HIGHLIGHTS

- Prominent signage opportunities along a busy corridor
- Ample on-site parking with easy ingress/egress
- Strong co-tenancy mix that drives consistent foot traffic
- Flexible floor plan suitable for retail, boutique, service, or quick-serve concepts
- Surrounded by dense residential neighborhoods and complementary businesses
- Unbeatable location—2 miles from I-81 on & off ramp and Walmart

## OFFERING SUMMARY

Sale Price:	\$279,000
Number of Units:	2
Lot Size:	0.33 Acres
Building Size:	3,528 SF

DEMOGRAPHICS	0.3 MILES	0.5 MILES	1 MILE
Total Households	30	386	2,280
Total Population	66	907	8,011
Average HH Income	\$104,127	\$98,382	\$100,727

### ASHLEY WARFIELD

Licensed Real Estate Salesperson  
607.745.8531  
awarfield@yaman.comm

### JEFFREY GUIDA

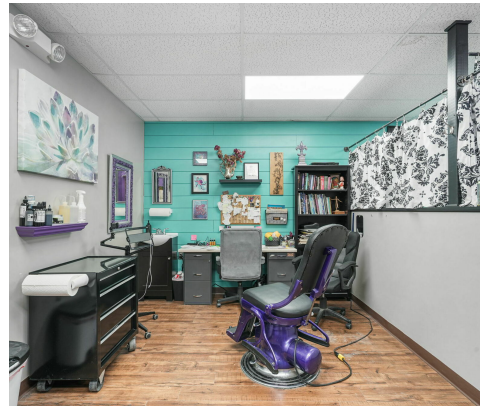
Licensed Associate Real Estate Broker  
315.727.9917  
jguida@yaman.comm





# ADDITIONAL PHOTOS

## Retail Property For Sale



**ASHLEY WARFIELD**  
Licensed Real Estate Salesperson  
607.745.8531  
awarfield@yaman.comm

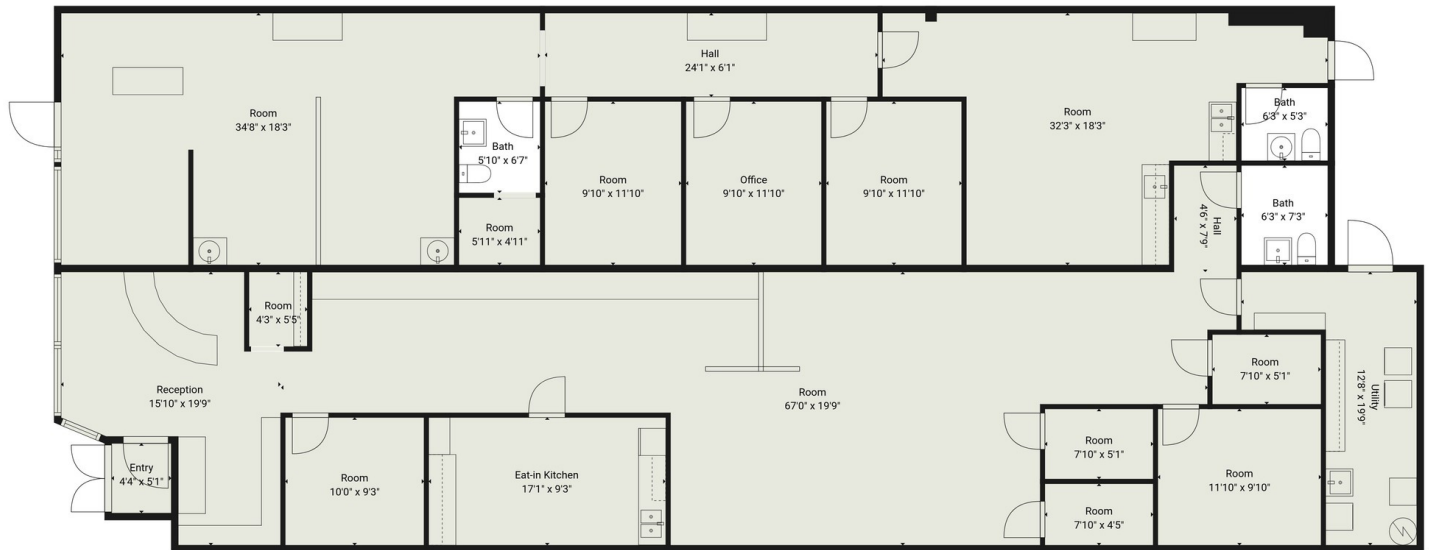
**JEFFREY GUIDA**  
Licensed Associate Real Estate Broker  
315.727.9917  
jguida@yaman.comm



# FLOOR PLANS



Retail Property For Sale



**TOTAL: 3612 sq. ft**  
1st floor: 3612 sq. ft  
EXCLUDED AREAS: WALLS: 137 sq. ft

**MANNA MEDIA INC.**

Floor Plan Created By Cubicasa App. Measurements Deemed Highly Reliable But Not Guaranteed.

**ASHLEY WARFIELD**  
Licensed Real Estate Salesperson  
607.745.8531  
awarfield@yaman.comm

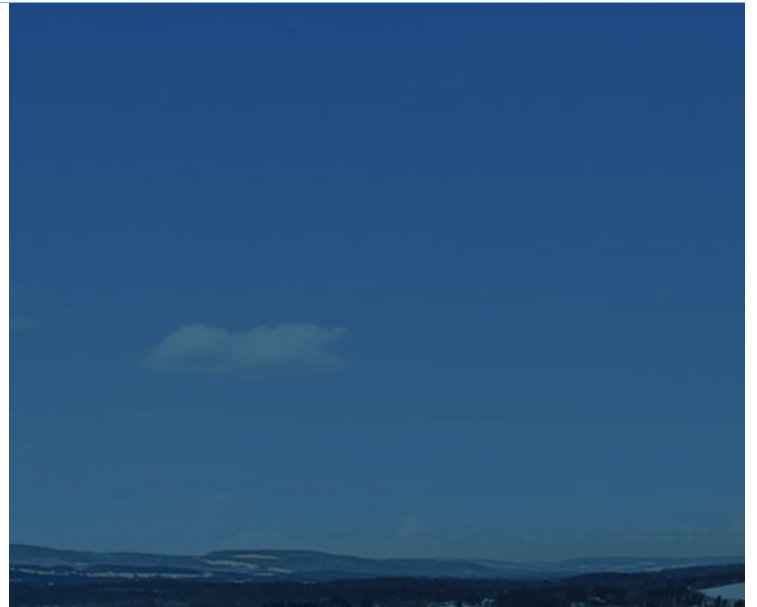
**JEFFREY GUIDA**  
Licensed Associate Real Estate Broker  
315.727.9917  
jguida@yaman.comm



# Location Information

---

1102-1104 Route 222,  
Cortland, NY 13045



---

**ASHLEY WARFIELD**  
Licensed Real Estate Salesperson  
607.745.8531  
awarfield@yaman.comm

**JEFFREY GUIDA**  
Licensed Associate Real Estate Broker  
315.727.9917  
jguida@yaman.comm



# LOCATION MAP



Retail Property For Sale



**ASHLEY WARFIELD**  
Licensed Real Estate Salesperson  
607.745.8531  
awarfield@yaman.comm

**JEFFREY GUIDA**  
Licensed Associate Real Estate Broker  
315.727.9917  
jguida@yaman.comm



# Demographics

1102-1104 Route 222,  
Cortland, NY 13045



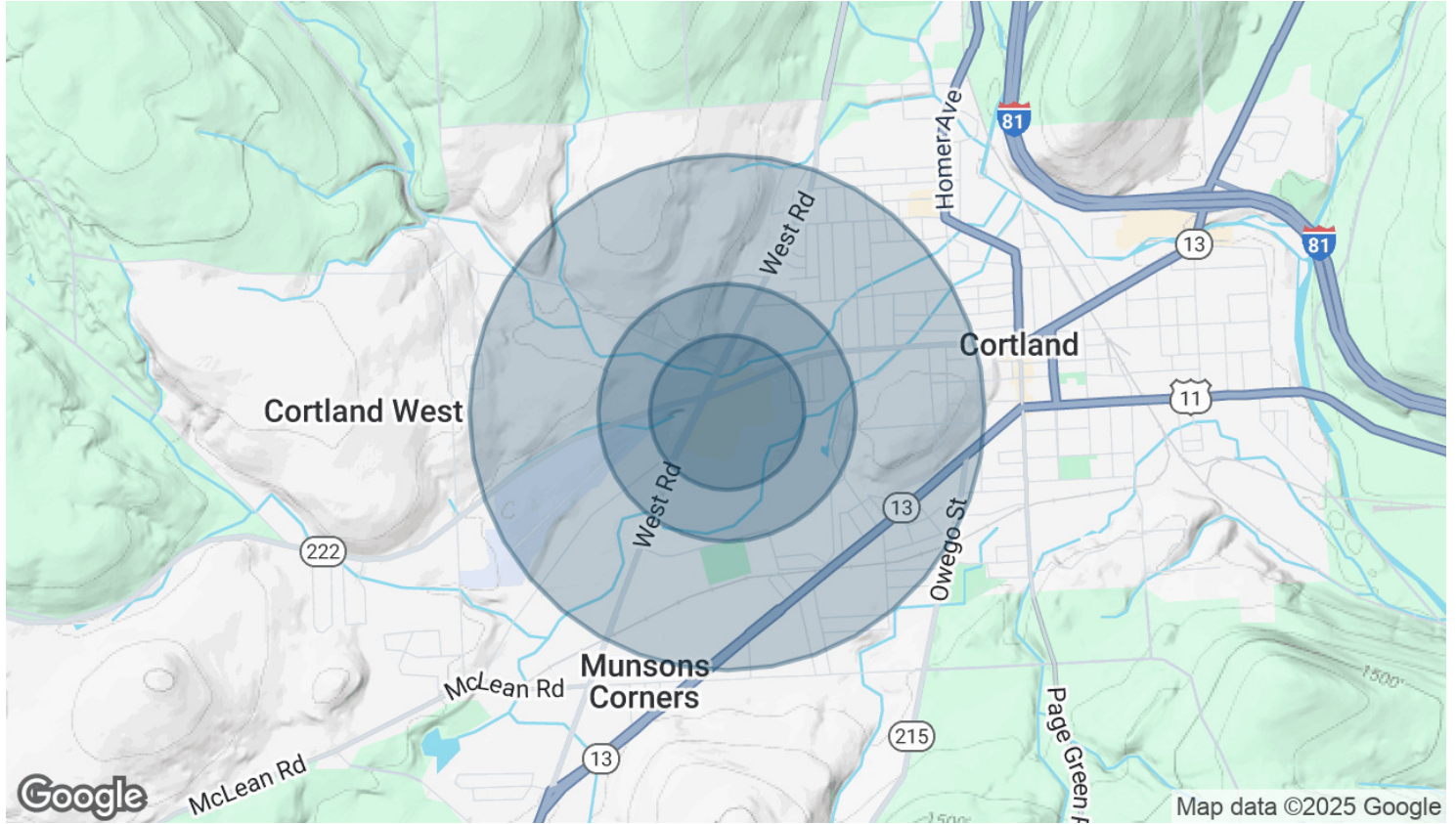
**ASHLEY WARFIELD**  
Licensed Real Estate Salesperson  
607.745.8531  
awarfield@yaman.comm

**JEFFREY GUIDA**  
Licensed Associate Real Estate Broker  
315.727.9917  
jguida@yaman.comm



# DEMOGRAPHICS MAP & REPORT

Retail Property For Sale



<b>POPULATION</b>	<b>0.3 MILES</b>	<b>0.5 MILES</b>	<b>1 MILE</b>
Total Population	66	907	8,011
Average Age	47	44	35
Average Age (Male)	45	42	34
Average Age (Female)	48	45	35

<b>HOUSEHOLDS &amp; INCOME</b>	<b>0.3 MILES</b>	<b>0.5 MILES</b>	<b>1 MILE</b>
Total Households	30	386	2,280
# of Persons per HH	2.2	2.3	3.5
Average HH Income	\$104,127	\$98,382	\$100,727
Average House Value	\$235,740	\$193,550	\$190,418

Demographics data derived from AlphaMap

**ASHLEY WARFIELD**  
 Licensed Real Estate Salesperson  
 607.745.8531  
 awarfield@yaman.comm

**JEFFREY GUIDA**  
 Licensed Associate Real Estate Broker  
 315.727.9917  
 jguida@yaman.comm



# Advisor Bios

---

1102-1104 Route 222,  
Cortland, NY 13045



---

**ASHLEY WARFIELD**  
Licensed Real Estate Salesperson  
607.745.8531  
awarfield@yaman.comm

**JEFFREY GUIDA**  
Licensed Associate Real Estate Broker  
315.727.9917  
jguida@yaman.comm



## ASHLEY WARFIELD

Licensed Real Estate Salesperson

awarfield@yaman.com

Direct: 607.745.8531

A lifelong resident of Cortland and the Finger Lakes region, Ashley Warfield brings a deep understanding of Central New York's communities and market dynamics to every transaction. As Treasurer for the Syracuse Chapter of the New York State Commercial Association of REALTORS® (NYSCAR), she actively contributes to advancing the state's commercial real estate industry while helping clients achieve their business and investment goals.

Backed by Yaman Commercial's record of over 100 years of combined experience, Ashley delivers trusted guidance and local expertise to both buyers and sellers. Her success is driven by strong communication, organization, and an unwavering dedication to her clients.

Outside of real estate, Ashley enjoys gardening, camping, and spending time with her four children.

**Yaman Commercial**  
185 Clinton Avenue  
Cortland, NY 13045  
607.218.6221

### ASHLEY WARFIELD

Licensed Real Estate Salesperson

607.745.8531

awarfield@yaman.com





### JEFFREY "JEFF" GUIDA

Licensed Associate Real Estate Broker

[jguida@yaman.com](mailto:jguida@yaman.com)

Direct: 315.727.9917

Originally from Liverpool, NY, Jeff Guida began his real estate career in 2010 and quickly built a reputation for his professionalism, integrity, and relationship-driven approach. Now based in Cortland, Jeff serves clients throughout Central New York, including Cortland, Syracuse, and Ithaca.

Working alongside Yaman Commercial's experienced team, which has achieved \$400M+ in sales and 1,250+ transactions, Jeff combines personal attention with a data-driven approach to help clients meet their commercial goals. His focus on relationships and understanding each client's vision sets him apart in Central New York's evolving market.

When he's not working with clients, Jeff enjoys gardening, movies, and spending time with his wife and three children.

**Yaman Commercial**  
185 Clinton Avenue  
Cortland, NY 13045  
607.218.6221

---

#### JEFFREY "JEFF" GUIDA

Licensed Associate Real Estate Broker

315.727.9917

[jguida@yaman.com](mailto:jguida@yaman.com)