

FOR LEASE | BUILDING 5

6001 N CLASSEN BLVD
OKLAHOMA CITY, OK 73116



CUSHMAN &
WAKEFIELD

COMMERCIAL
OKLAHOMA



**LEASE
RATE:**
\$21.00 NNN

PROPERTY HIGHLIGHTS

Located on the NW corner of NW 60th & Classen Blvd, Building 5 is located on Expand Campus. The area is quickly densifying with new high-density multifamily and hotel development within walking distance to OKC's most upscale shopping centers, The Triangle at Classen Curve, Classen Curve and Nichols Hills Plaza.

CLASS "A" OFFICE FOR LEASE

- **BUILDING SIZE:** ± 64,273 SF
 - BASEMENT:** ± 10,712 SF
 - 1ST FLOOR:** ± 10,712 SF
 - 2ND FLOOR:** ± 10,712 SF
- **OFFICE COUNT:** 201
- **PARKING RATIO:** 9.00 /1,000
- **CAR PARKS:** 533

CONTACT
US

VIVIENNE VOGLER
+1 405 570 8595
vvogler@commercialoklahoma.com

MICAH SHERMAN
+1 405 488 5548
msherman@commercialoklahoma.com

TRAVIS MASON
+1 405 249 0655
tmason@commercialoklahoma.com

FOR LEASE I BUILDING 5

6001 N CLASSEN BLVD
OKLAHOMA CITY, OK 73116

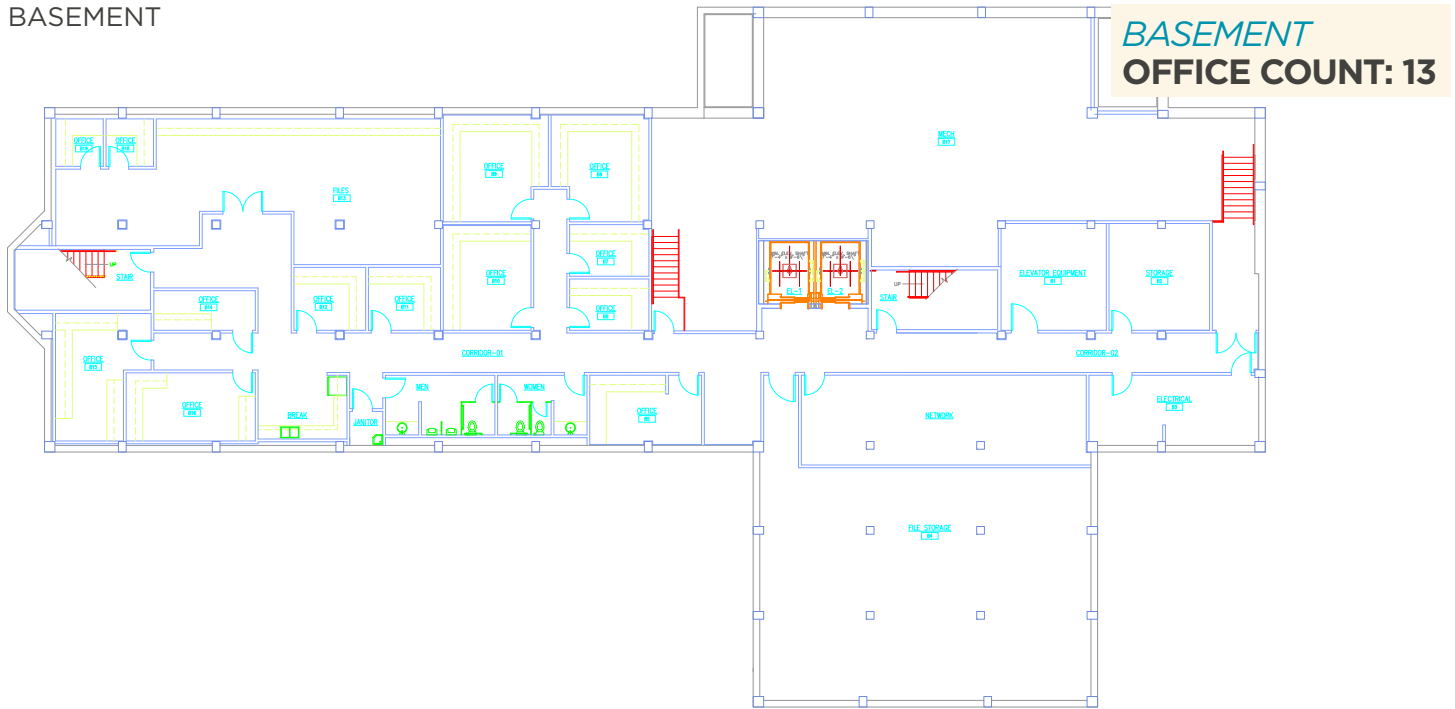


CUSHMAN &
WAKEFIELD

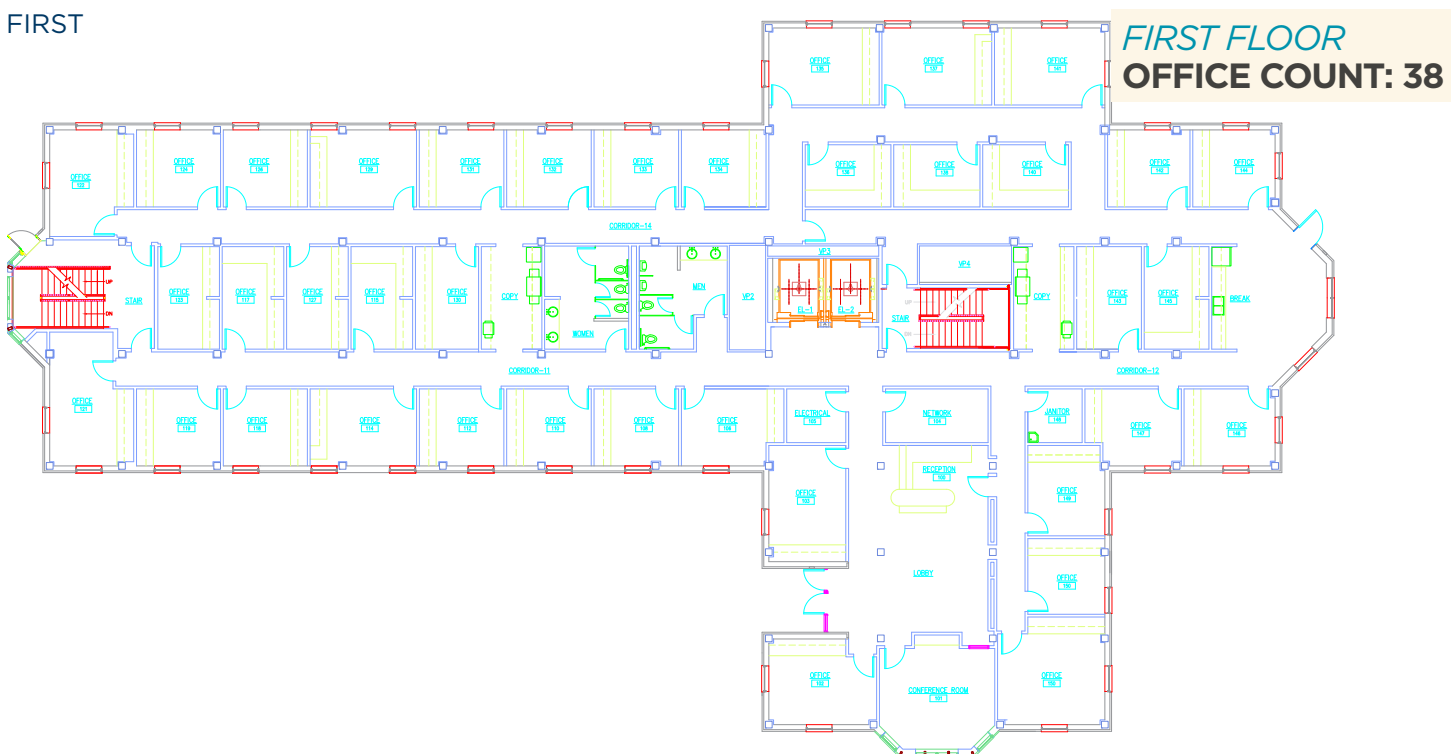
COMMERCIAL
OKLAHOMA

FLOOR PLANS

BASEMENT



FIRST



FOR LEASE | BUILDING 5

6001 N CLASSEN BLVD
OKLAHOMA CITY, OK 73116

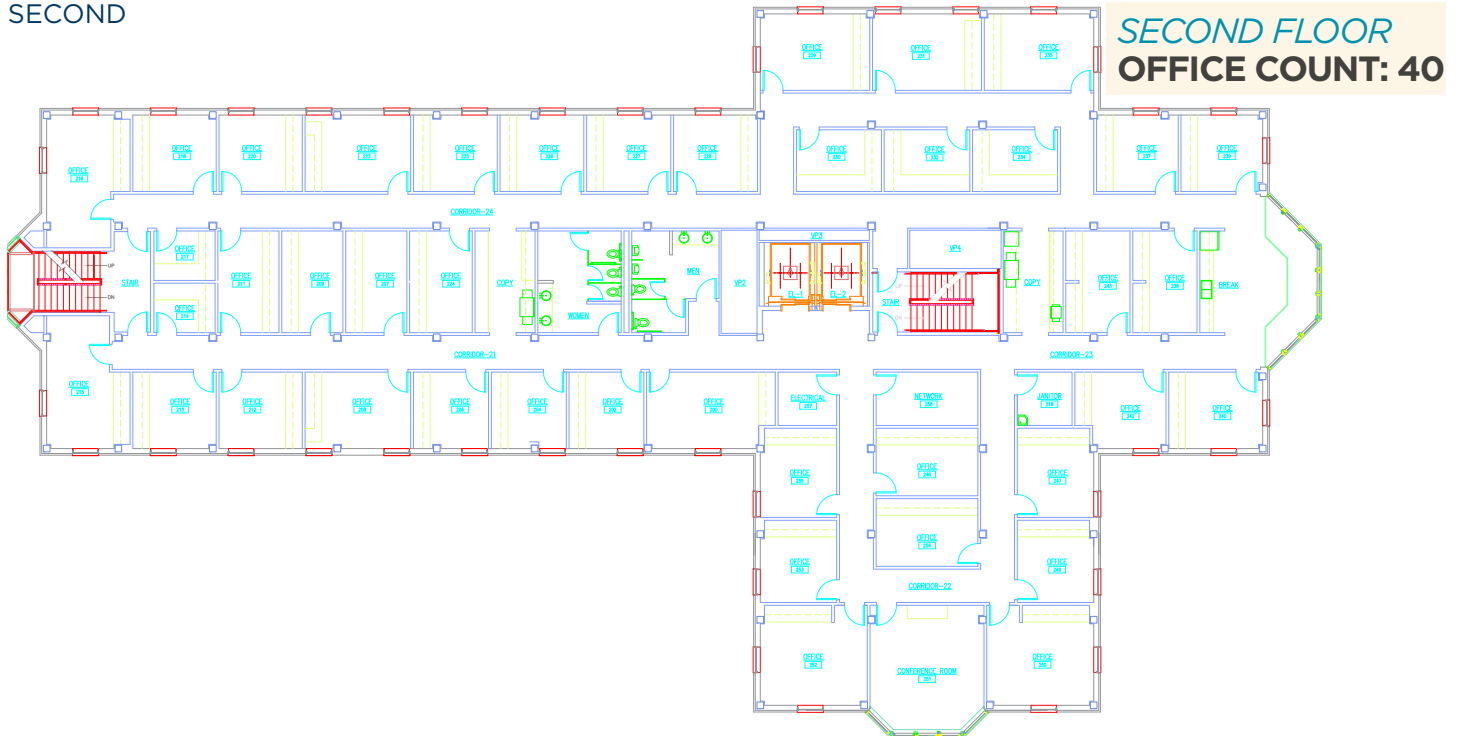


CUSHMAN &
WAKEFIELD

COMMERCIAL
OKLAHOMA

FLOOR PLANS

SECOND



CONTACT US

VIVIENNE VOGLER
+1 405 570 8595
vogler@commercialoklahoma.com

MICAH SHERMAN
+1 405 488 5548
msherman@commercialoklahoma.com

TRAVIS MASON
+1 405 249 0655
tmason@commercialoklahoma.com

OKLAHOMA
CITY

204 N Robinson Ave, Suite 2000, Oklahoma City, OK 73102
+1 405 563 5000
commercialoklahoma.com