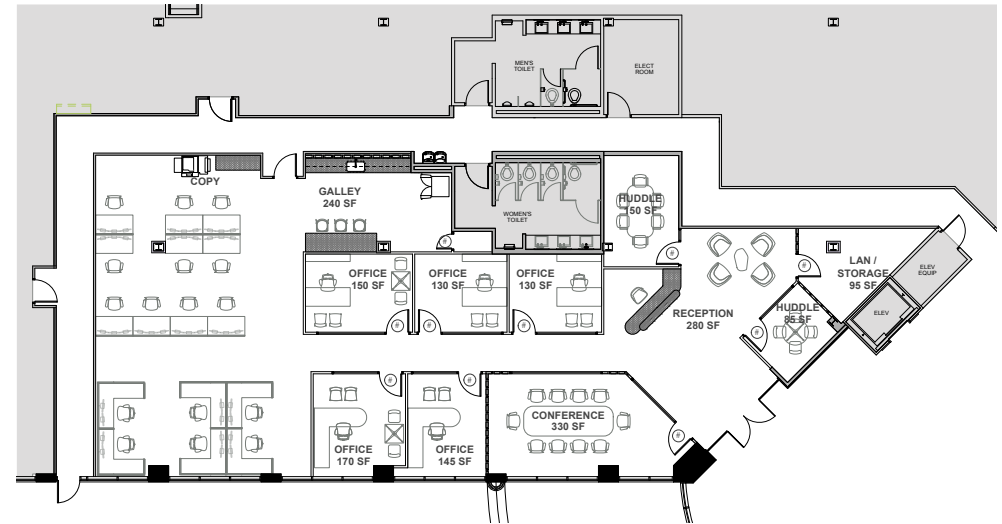
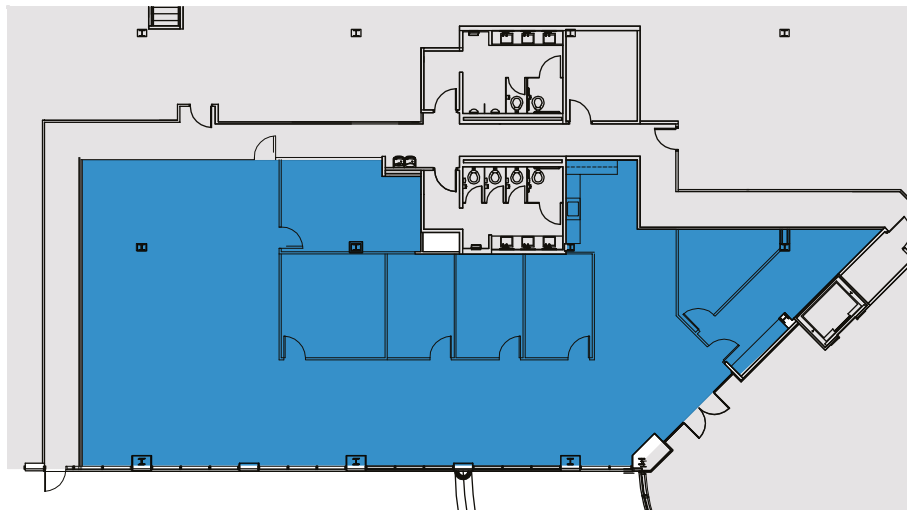


# 14850 CONFERENCE CENTER DRIVE

## 1ST FLOOR



Suite #150 **4,410 RSF**  
*As-built*

Suite #150 **4,410 RSF**  
*Spec suite*

Program	
Space	Count
Workstation (6x6)	6
Workstation (5' Bench)	10
Office	5
Conference	1
Huddle	2
Galley	1
Lan	1
Copy / Print	1

**BRAND NEW SPEC SUITE  
DELIVERING FALL 2026**

**DIRECT MAIN  
LOBBY EXPOSURE**

**ADJACENT TO NEW CONFERENCE  
CENTER & LOUNGE**