



# Lease Rates

370 Main Street  
\$16.00 psf gross

376 Main Street  
\$20.00 psf nnn

**Nicholas Morizio, CRE, SIOR**  
860 616 4022  
nicholas.morizio@ct.colliers.com

**Sean Kumnick**  
860 616 4025  
sean.kumnick@ct.colliers.com

864 Wethersfield Avenue  
Hartford, CT 06114  
860 249 6521 Main

[colliers.com/hartford](http://colliers.com/hartford)



## 370 & 376 Main Street Durham, CT 06422

### Office/Retail Space for Lease

#### Features

- 376 Main Street is a former bank building with ±3,328 sf of office/retail space
- 370 Main Street is a ±1,350 sf retail space located next to The Whole Enchilada Mexican Restaurant
- Located at traffic light
- Route 17 & 147 corner lot
- 4/1,000 parking ratio

Copyright © 2025 Colliers International. Information herein has been obtained from sources deemed reliable, however its accuracy cannot be guaranteed. The user is required to conduct their own due diligence and verification.



### 370 Main Street

±1,350 sf retail space - \$16.00 psf gross



### 376 Main Street

±3,328 sf office/retail space - \$20.00 psf nnn

## Demographics

	POPULATION	HOUSEHOLDS	AVG HH INCOME
1 Mile	1,480	560	\$111,833
3 Miles	9,453	3,581	\$118,253
5 Miles	38,161	14,827	\$102,910

### Traffic Counts

Middlefield Rd & Main St E	6,500vpd
Main St & Middlefield Rd S	13,003vpd
Main St & Talcott Ln N	16,232vpd



**Nicholas Morizio, CRE, SIOR**  
 860 616 4022  
 nicholas.morizio@ct.colliers.com

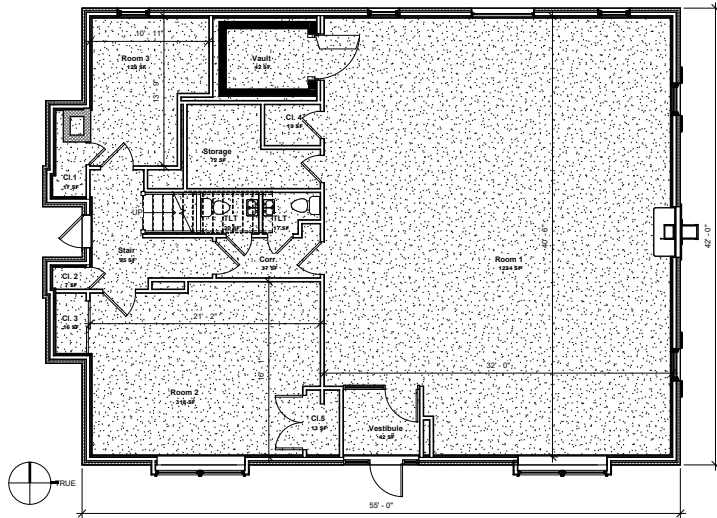
**Sean Kumnick**  
 860 616 4025  
 sean.kumnick@ct.colliers.com

864 Wethersfield Avenue  
 Hartford, CT 06114  
 860 249 6521 Main

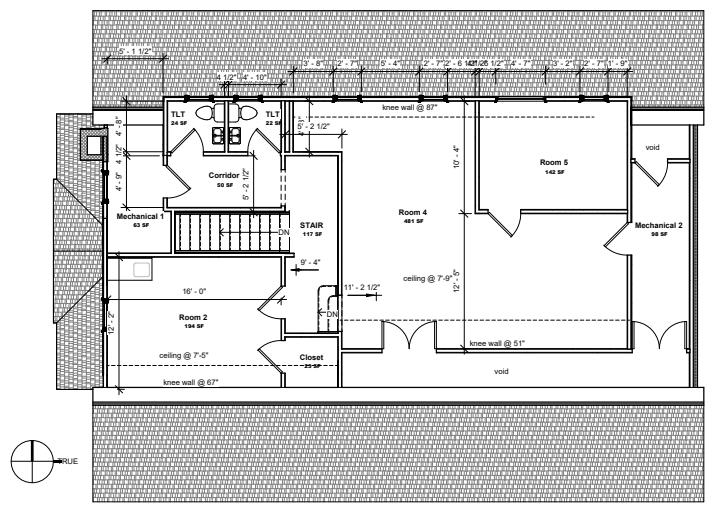
colliers.com/hartford

# Plans for 376 Main Street

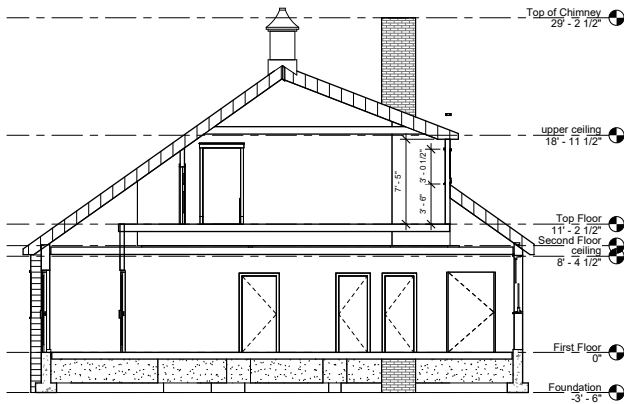
## First Floor



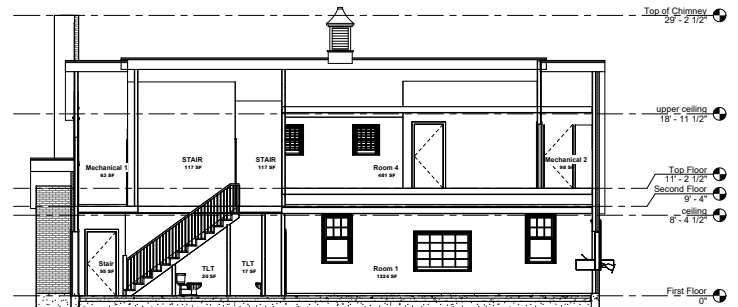
## Second Floor



## Building Section



## Building Section



**Nicholas Morizio, CRE, SIOR**  
 860 616 4022  
 nicholas.morizio@ct.colliers.com

**Sean Kumnick**  
 860 616 4025  
 sean.kumnick@ct.colliers.com

864 Wethersfield Avenue  
 Hartford, CT 06114  
 860 249 6521 Main

[colliers.com/hartford](http://colliers.com/hartford)