



NOW LEASING

RENTAL RATES

\$4,875/MO (\$18/RSF)
Full Service (Less Janitorial)

SPACE AVAILABLE

3,248 RSF

OFFICE SPACE

502 W Riverside. Suite 101, Spokane, WA 99201

NEIGHBORHOOD

Beautiful office space in the heart of Downtown, conveniently located on the Skywalk system steps away from shopping and dining. Parking available in the adjacent Parkade.

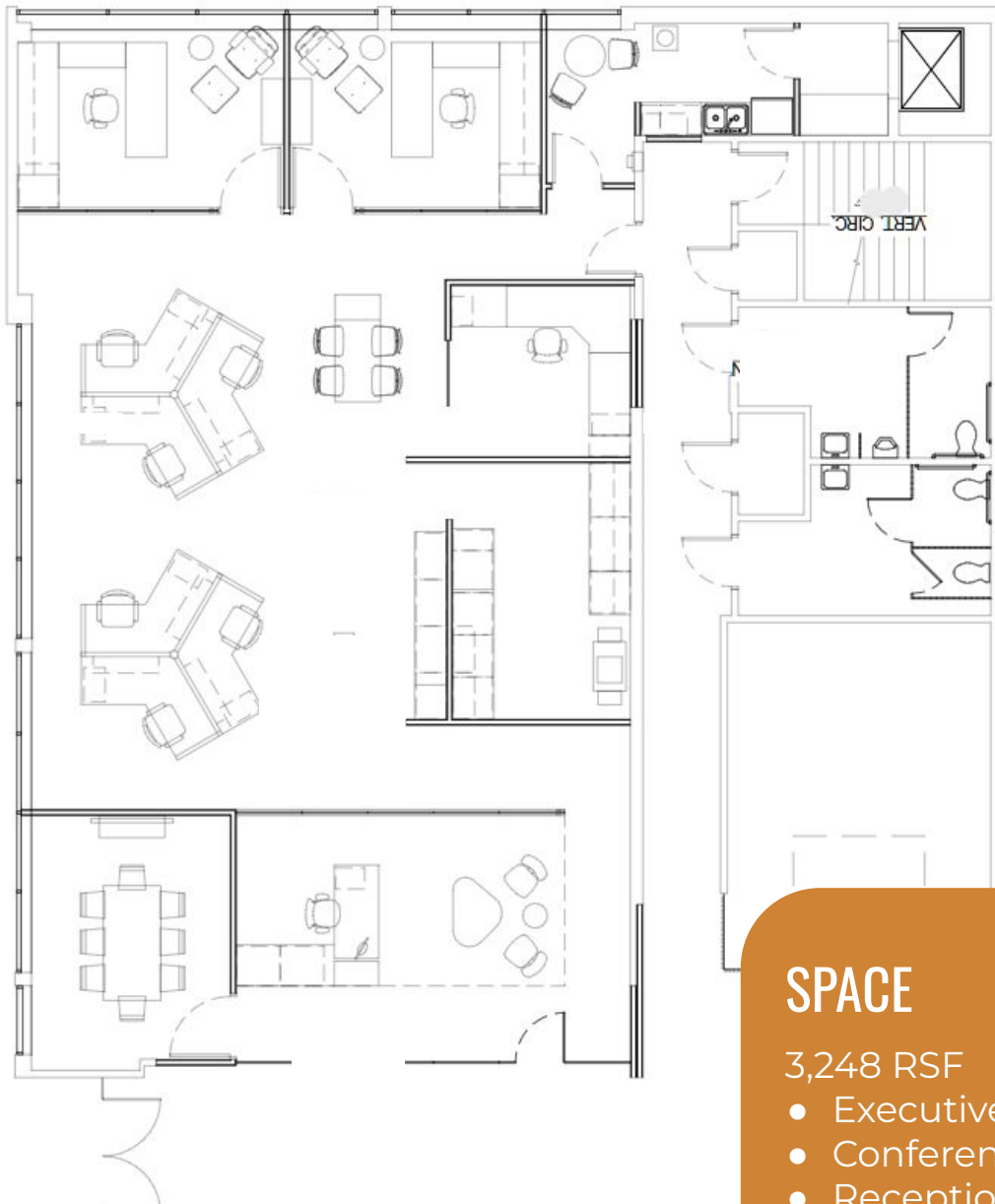
AMENITIES

- ✓ Centrally Located
- ✓ Conference Room
- ✓ Reception
- ✓ Kitchen Area
- ✓ Large Print/Production Room
- ✓ Large Executive Private Offices
- ✓ Large Bullpen

Information is deemed reliable but not guaranteed. Broker not responsible for changes errors or commissions. All square footages are for conveniences only. All information should be verified prior to leasing or purchasing property.



FLOOR PLAN



SPACE

3,248 RSF

- Executive Offices
- Conference Room
- Reception
- Large Work Room
- Bullpen

Information is deemed reliable but not guaranteed. Broker not responsible for changes errors or commissions. All square footages are for conveniences only. All information should be verified prior to leasing or purchasing property.

ADDITIONAL PHOTOS



Information is deemed reliable but not guaranteed. Broker not responsible for changes errors or commissions. All square footages are for conveniences only. All information should be verified prior to leasing or purchasing property.