



GRAND
CENTRAL®

ONE OF A KIND
OPPORTUNITY AT
GRAND CENTRAL'S
BEST-KEPT SECRET

Campbell Bar

CBRE



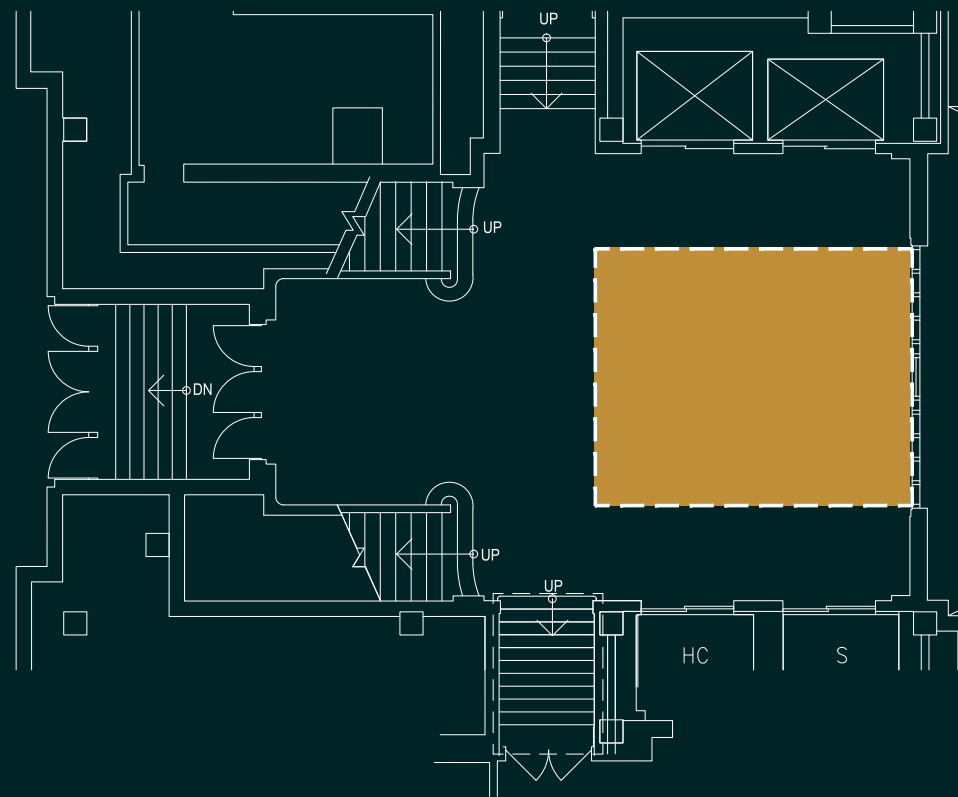
A TASTE OF NYC HISTORY

Located within the landmarked halls of Grand Central Terminal, The Campbell Bar is one of New York's most iconic historic destinations, meticulously restored to blend extraordinary architectural heritage with refined contemporary design.

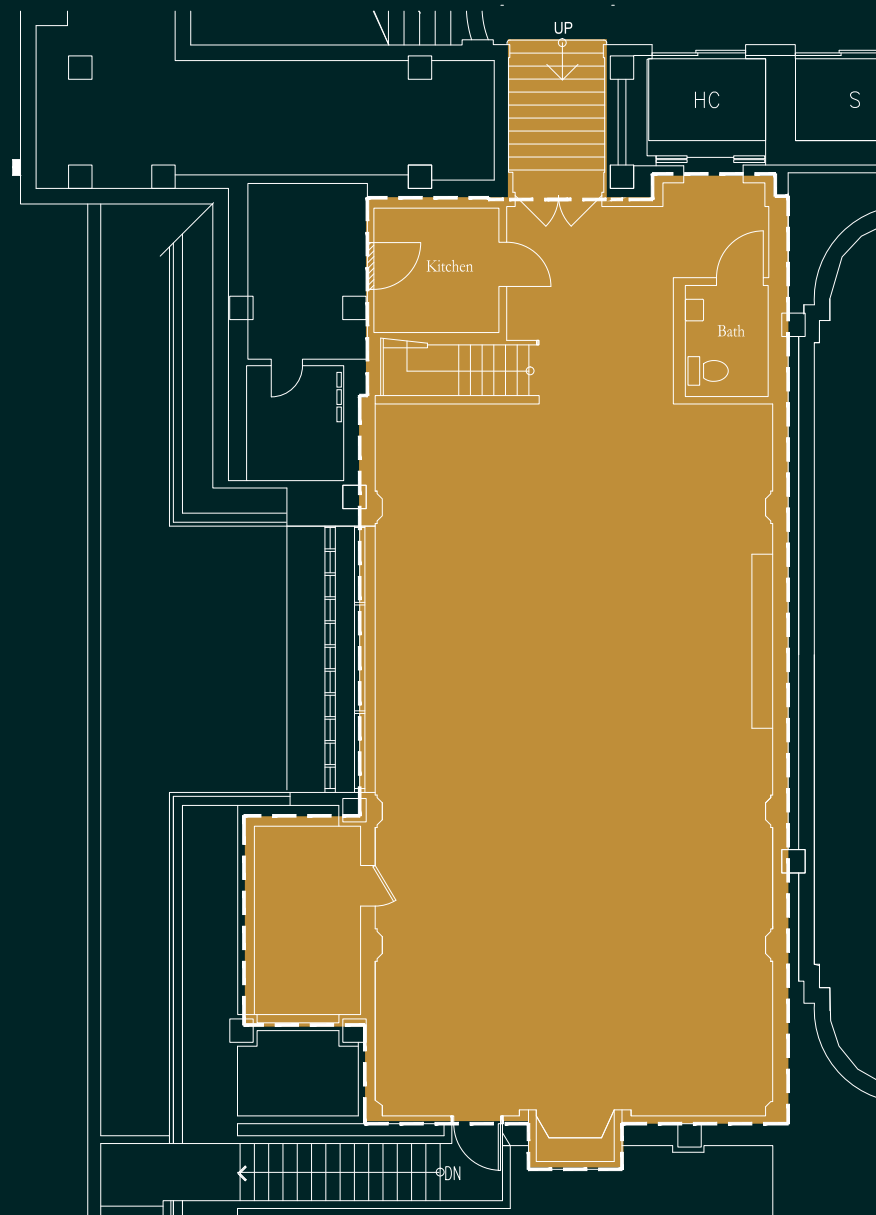
Originally conceived in 1923 as the private office and reception hall of John W. Campbell, the space showcases soaring hand-painted ceilings, original millwork, leaded glass windows, a grand stone fireplace, and Campbell's personal steel safe. The offering encompasses three distinct experiences — The Bar, The Palm Court, and The Terrace — presenting a rare opportunity to steward and operate one of Manhattan's most storied culinary and cocktail institutions.



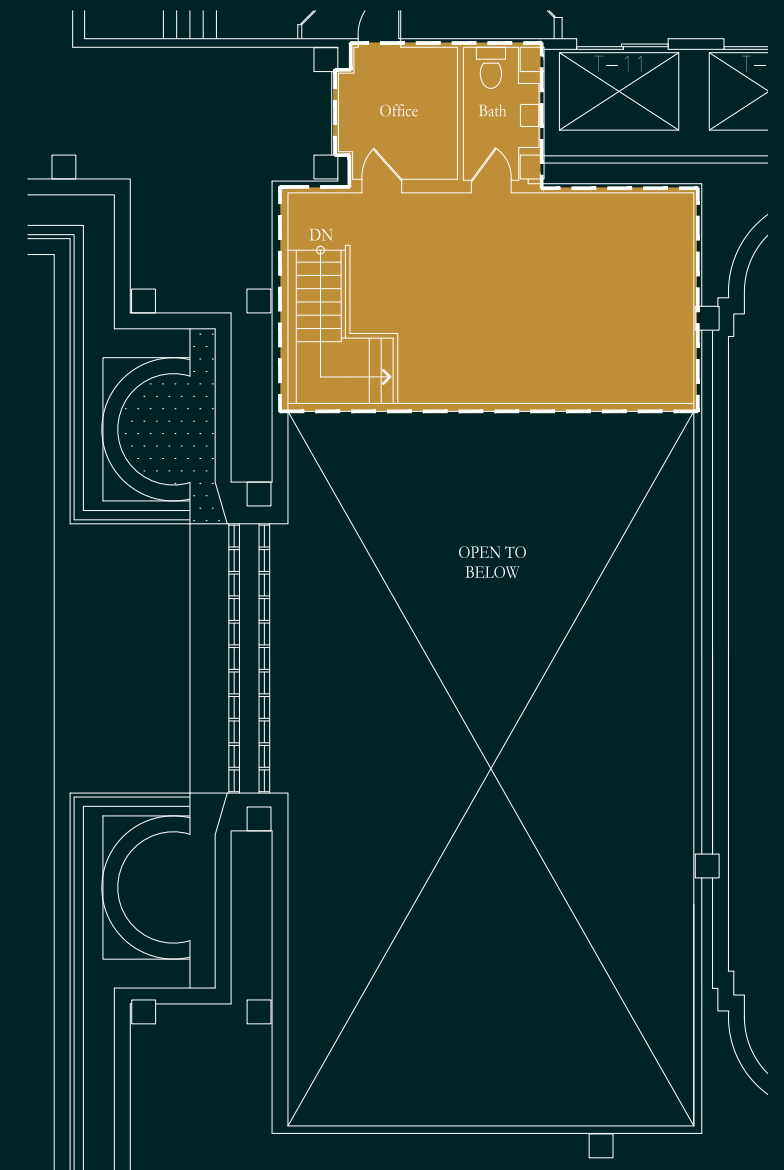
MAIN LEVEL
PALM COURT
420 SF



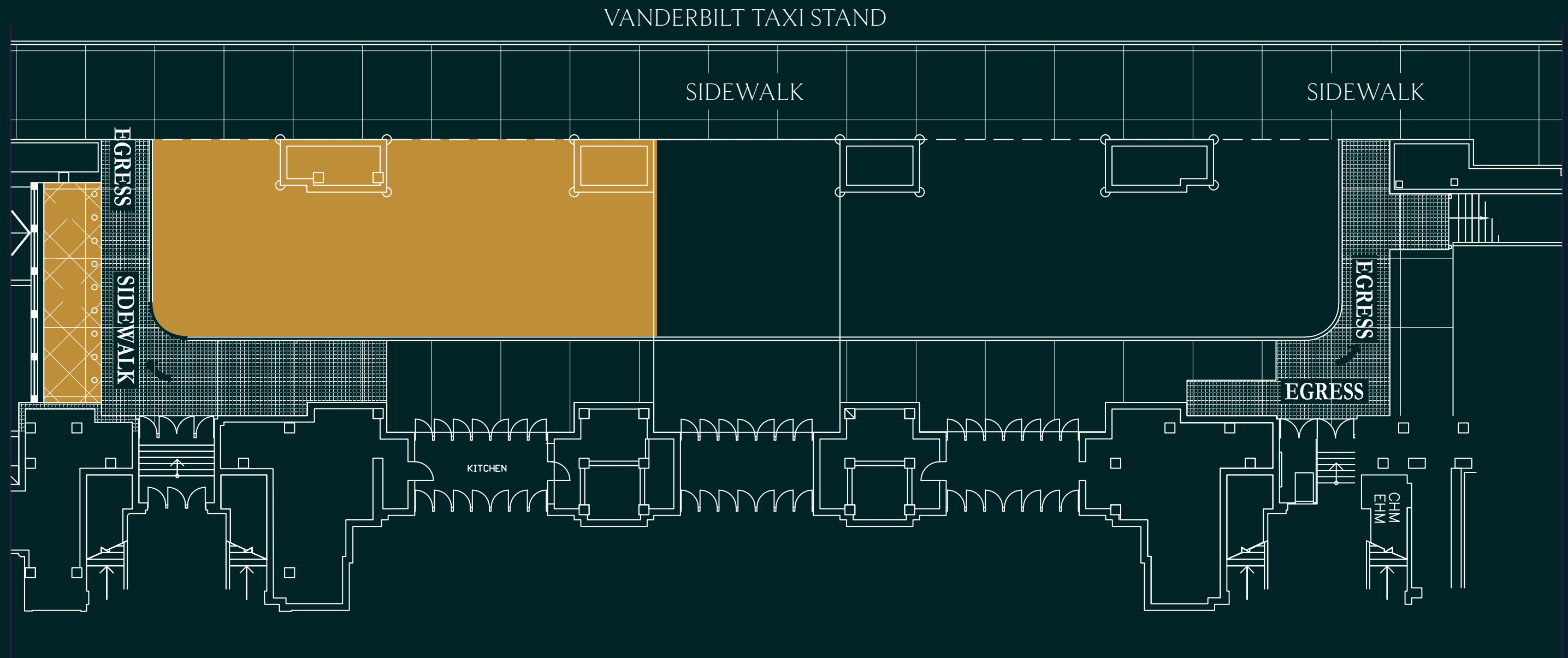
MAIN LEVEL
APARTMENT
1,752 SF



SECOND LEVEL
MEZZANINE
483 SF



GROUND LEVEL
OUTDOOR TERRACE
2,335 SF



MORE THAN A TERMINAL

Since 1913, Grand Central Terminal has been far more than a transit hub—it is one of New York’s great civic landmarks and a true destination in its own right. Beneath its iconic clock and historic concourses, commuters, visitors, and New Yorkers converge in a space that has long served as the city’s shared gathering ground, shaped by over a century of culture, architecture, and daily life.

Today, Grand Central remains a vital engine of movement and connection, linking Metro-North Railroad, Long Island Rail Road via Grand Central Madison, subway lines, buses, and regional transit into Manhattan’s East Side. Serving hundreds of thousands of daily travelers, it continues to define how the city arrives, departs, and comes together, cementing its role as one of the most important and dynamic destinations in the world.

750K+
Daily Commuters
& Visitors

6M
Annual
Tourists

45M
Annual Subway
Ridership





GRAND
CENTRAL®

RFP ISSUED: JUNE 30, 2026
TOUR DATE: JULY 14, 2026 @10AM ET
RFP DUE: AUGUST 11, 2026

MATT CHMIELECKI

Matt.Chmielecki@cbre.com
212-984-6698

PRESTON CANNON

Preston.Cannon@cbre.com
212-984-6544

FRANCES ROYER

Frances.Royer@cbre.com
212-895-0956

© 2026 CBRE, Inc. All rights reserved. This information has been obtained from sources believed reliable, but has not been verified for accuracy or completeness. You should conduct a careful, independent investigation of the property and verify all information. Any reliance on this information is solely at your own risk. CBRE and the CBRE logo are service marks of CBRE, Inc. All other marks displayed on this document are the property of their respective owners, and the use of such logos does not imply any affiliation with or endorsement of CBRE.

CBRE