



**Building 6**  
**BAD ASS**  
COFFEE OF HAWAII  
**Nail Salon**

**Building 5**  
**McALISTER'S**  
DELI  
**Framing Shop**

**Building 3**  
**CHIPOTLE**  
MEXICAN GRILL  
**CLUB PILATES**  
**PLYA BOWS**  
EST. 1994 ORIGINAL KAVA BLEND

**Building 2**  
**CHICKEN SALAD CHICK**  
**RED WING**  
**GYRO REPUBLIC**  
FAST FRESH FOOD

**PAYDA EXPRESS**  
CHINESE KITCHEN

Boerne, TX (San Antonio MSA)

# Building 2 - One of Four New Construction Trophy Outparcels to Sprouts Farmers Market

Available individually or as portfolio (see page 18)



**CP PARTNERS**  
COMMERCIAL REAL ESTATE

In Association with ParaSell, Inc.  
A Licensed Texas Broker #9009637



**Building 3**

**CHIPOTLE**  
MEXICAN GRILL

**CLUB PILATES**

**PLAYA BOWLS**  
THE ORIGINAL Acai Bowl

**Building 2**

**CHICKEN SALAD CHICK**

**RED WING**

**GYRO REPUBLIC**  
FAST FRESH FOOD



## Contact the Team

**Joe Caccamo**  
jcaccamo@cppcre.com  
PH: 415.274.7394  
CA DRE# 01191110

**Lea Kuehnhackl**  
lea@cppcre.com  
PH: 707.484.2284  
CA DRE# 01435080

**Zeb Ripple**  
zripple@cppcre.com  
PH: 415.274.2702  
CA DRE# 01242540

**Chris Peters**  
cpetes@cppcre.com  
PH: 415.274.2703  
CA DRE# 01339983

**Scott Reid**  
ParaSell, Inc.  
scott@parasellinc.com  
PH: 949.942.6585  
TX LIC# 739436

In Association with ParaSell, Inc.  
A Licensed Texas Broker #9009637

## Disclaimer

This document and the information herein (the "Offering Memorandum") have been prepared by CP Partners, CP Partners Commercial Real Estate, Inc., and ParaSell, Inc. (collectively "CPP") to provide summary, unverified information to prospective purchasers and their representatives (the "Recipients") strictly for purposes of evaluating the subject property's initial suitability for purchase. This information has been obtained from sources believed to be reliable, however, CPP makes no warranty, representation, or guarantee whatsoever regarding the accuracy or completeness of the information provided. As examples, but not limited to the following, references to square footage or age may be approximate, references to terms and conditions of any lease agreement(s) may be paraphrased or inaccurate, and photographs and renderings may be enhanced and not fully representative of the subject property in its actual current condition. Any financial projections or analyses are provided strictly for evaluation purposes, could be in error, and are based on assumptions, factors, and conditions that may or may not exist now or in the future. All Recipients must take appropriate measures to understand the subject property independently from this Offering Memorandum and simultaneously recognize that there is an inherent level of risk and unpredictability that comes with owning assets such as the subject property. CPP does not intend for Recipients to make any decision to purchase based on the information contained herein and along with its employees, agents, officers, and owners explicitly disclaim any responsibility for inaccuracies or differences of opinion. CPP strongly encourages all Recipients to seek advice from real estate, tax, financial, and legal advisors before making any offers, entering a binding contract, or consummating a transaction of any kind. By accepting this Offering Memorandum you agree to release CPP and hold it harmless from any kind of claim, cost, expense, or liability arising out of your investigation, purchase, and ownership of the subject property.



**Building 2**

 **CHICKEN SALAD CHICK**

 **RED WING**

 **GIRO REPUBLIC**  
FAST FRESH FOOD

# Boerne Town Center - Bldg 2

34702 Interstate Hwy 10 W, Boerne, TX 78006 [▶](#)

PRICE: **\$3,760,000**      CAP RATE: **5.70%**

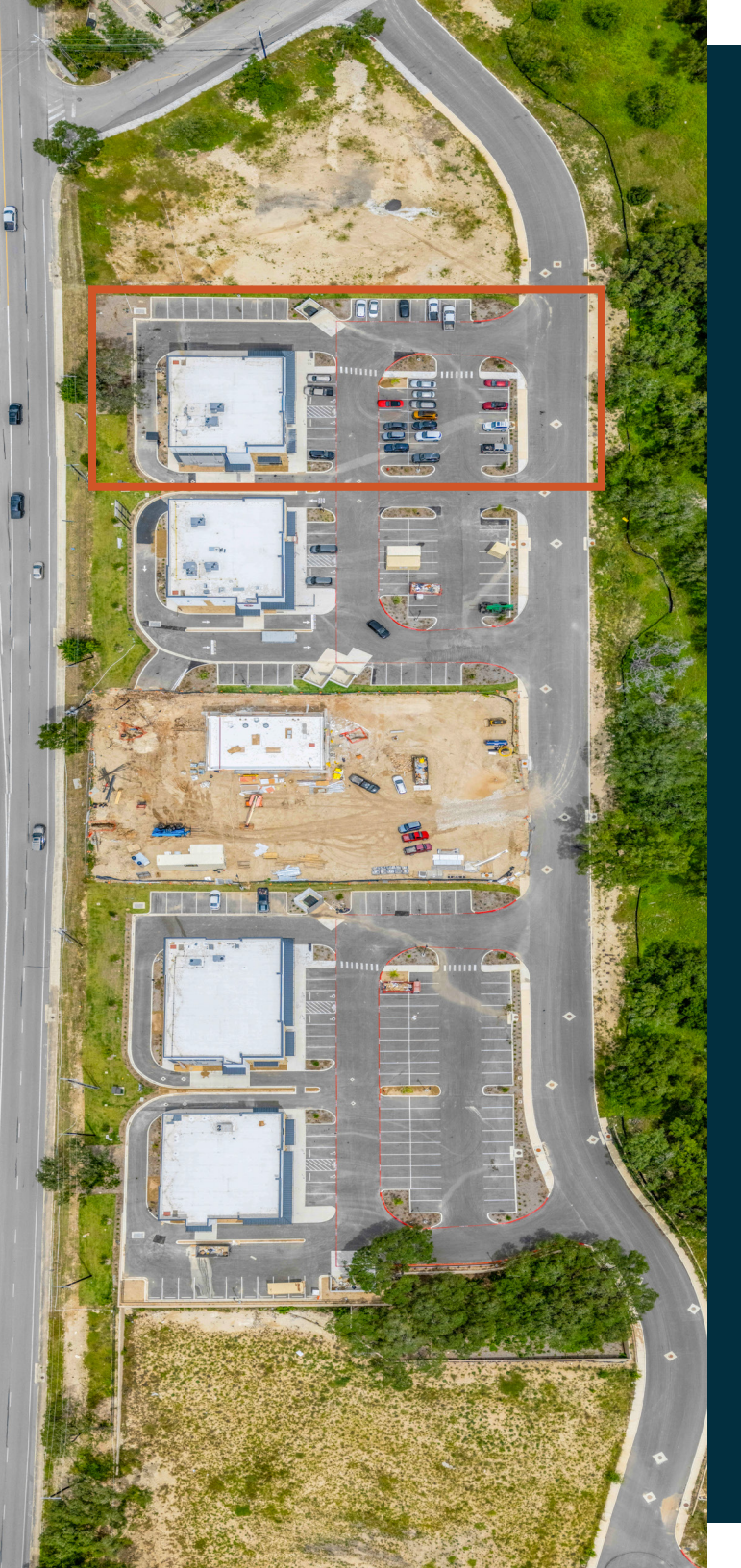
NOI	\$214,322
LEASE TYPE	Absolute NNN
OCCUPANCY	100.00%
NO. OF TENANTS	3
TOTAL RENTABLE AREA	5,847 SF
LOT SIZE	1.159 AC



## Chicken Salad Chick anchored Three Tenant Building in a Sprouts Grocery Anchored Center – High Visibility Location Along Interstate 10 in One of Texas’s Fastest Growing Submarkets

Located in Boerne, TX, a **high-income, high-growth market** approximately 31 miles northwest of downtown San Antonio, **Building 2 is 100% leased** to Chicken Salad Chick, Red Wing Shoes, and Gyro Republic (LOI). Other tenants in the center include Chipotle, McAlister’s Deli, Playa Bowls, Club Pilates, Nothing Bundt Cakes, and Bad Ass Coffee, with **Sprouts Farmers Market to serve as the center’s anchor (2027 estimated opening)**.

The property benefits from **direct I-10 frontage** and **dedicated ingress and egress** via Christus Parkway to the south and Norris Lane to the north, capturing both local residential demand and commuter traffic between Boerne and San Antonio. Kendall County grew **20.3%** from 2020 to 2025 per the U.S. Census Bureau, and the **average household income within a 5-mile radius of Boerne exceeds \$156,600**, reflecting a deep and affluent consumer base. Boerne serves as the traditional **gateway to Texas’ famed Hill Country**, and the extraordinary pace of development along the Northwest San Antonio corridor has effectively **merged the two markets along the I-10 corridor**, extending Boerne’s trade area reach while preserving its distinct Hill Country identity.



# High-Growth Boerne Submarket Within the San Antonio MSA Along a High-Traffic & Retail Interstate Corridor

## Sprouts Anchored with Drive-Thru End Cap

- Positioned along Interstate 10 at Christus Parkway with a newly completed highway exit and entrance ramp configuration designed to maximize traffic flow and retail accessibility.
- The I-10 corridor connecting Boerne to San Antonio serves as a primary arterial for both daily commuters and regional through-traffic, providing consistent consumer exposure for the tenants.
- A Buc-ee's travel center (approximately 54,000 SF) has been approved by Boerne City Council for a site near South Main Street and I-10, further anchoring the corridor as a regional retail and travel destination.

## Sprouts Farmers Market - Coming Late 2027

- Sprouts Farmers Market - the perfect fit for affluent Boerne, will serve as the shopping center's main anchor.
- Sprouts is experiencing robust unit growth, targeting 40+ new stores in 2026 as part of a larger pipeline of over 140 approved locations.
- Net sales reached \$8.8 billion in 2025 (a 14% increase) as the specialty grocer balances expansion with a focus on afford-ability and digital loyalty programs.

[LEARN MORE ABOUT SPROUTS](#) 

# Why Boerne, TX?

Boerne, Texas is one of the Sun Belt's most compelling retail investment markets, combining explosive population growth, an affluent consumer base, and quality-of-life attributes drawing households nationwide. As the gateway to Texas' Hill Country, rapid development along the Northwest San Antonio corridor has extended Boerne's trade area while preserving its distinct identity.

## Strategic Location in a High-Growth Metro

Situated 31 miles northwest of downtown San Antonio along the I-10 corridor, Boerne sits at the epicenter of one of the nation's most dynamic metropolitan economies. San Antonio ranked as the fourth fastest-growing large city in the U.S. from 2023 to 2024, adding nearly 24,000 net new residents. The broader San Antonio–New Braunfels MSA has grown by approximately 205,000 people since 2020 — nearly 60% driven by in-migration from other states — and now counts nearly 2.8 million residents.

## Exceptional Population Growth and an Affluent Consumer Base

Boerne's population has grown by more than 38% since the 2020 Census, at an annual rate of approximately 4.84%. This growth is driven by deliberate relocation decisions — households seeking safety, schools, and lifestyle — creating sticky, long-term retail demand. Kendall County recorded the highest AMI growth in all of Texas in 2023, reaching \$135,400. Boerne's per capita income has more than doubled since 2000, and median home values now range from \$550,000 to \$630,000 — reflecting a consumer base with substantial disposable income and demonstrated spending power.

## Nationally Recognized

The Boerne Independent School District has earned six consecutive "A" ratings from the Texas Education Agency, maintains a 98.3% graduation rate, and is projecting enrollment to nearly double to 18,000 students by 2033 — a powerful indicator of long-term household retention. At the macro level, Texas offers no personal or corporate state income tax, a \$2.769 trillion GDP (second largest in the nation), and a regulatory environment consistently ranked among the most business-friendly in the country.



		<b>CURRENT</b>
<b>Price</b>		<b>\$3,760,000</b>
<b>Capitalization Rate</b>		<b>5.70%</b>
<b>Price Per Square Foot</b>		<b>\$643.06</b>
Total Leased (SF):	100.00%	5,847
Total Vacant (SF):	0.00%	0
Total Rentable Area (SF):	100.00%	5,847
<b>Income</b>		<b>\$/SF</b>
Scheduled Rent	\$36.65	\$214,322
Scheduled Recoveries	\$12.00	\$70,164
<b>Effective Gross Income</b>		<b>\$284,486</b>
<b>Expense</b>		<b>\$/SF</b>
CAM (includes mgmt. fee)	(\$3.25)	(\$19,003)
Taxes	(\$7.00)	(\$40,929)
Insurance	(\$1.75)	(\$10,232)
<b>Total Operating Expenses</b>	<b>(\$12.00)</b>	<b>(\$70,164)</b>
<b>Net Operating Income</b>		<b>\$214,322</b>



Tenant Info				Lease Terms		Rent Summary		
BLDG	TENANT NAME	SQ. FT.	% OF GLA	TERM		MONTHLY RENT	ANNUAL RENT	RENT/FT
2	Chicken Salad Chick	2,800	47.89%	Year	1	\$7,933.33	\$95,200.00	\$34.00
	<i>10 year term - 2.5% annual rent increases</i>				10	\$9,909.67	\$118,916.00	\$42.47
				<i>Three (3) 5-year options</i>		<i>2.5% annual rent increases in option periods</i>		
2	Red Wing Shoes	1,647	28.17%	Year	1	\$4,735.13	\$56,821.50	\$34.50
	<i>10 year term - 2.0% annual rent increases</i>				10	\$5,658.82	\$67,905.81	\$41.23
				<i>Two (2) 5-year options</i>		<i>2.0% annual rent increases in both option periods</i>		
2	Gyro Republic (LOI)	1,400	23.94%	Year	1	\$5,191.67	\$62,300.00	\$44.50
	<i>10 year term - 2.0% annual rent increases</i>				10	\$6,204.52	\$74,454.27	\$53.18
						<i>2.0% annual rent increases</i>		
	OCCUPIED	5,847	100.00%	RENT TOTAL		\$17,860.13	\$214,321.50	\$36.65
	VACANT	0	0.00%					
	CURRENT TOTALS	5,847	100.00%					

# LEGEND

## Building 2



Property Boundary

5,847

Rentable SF

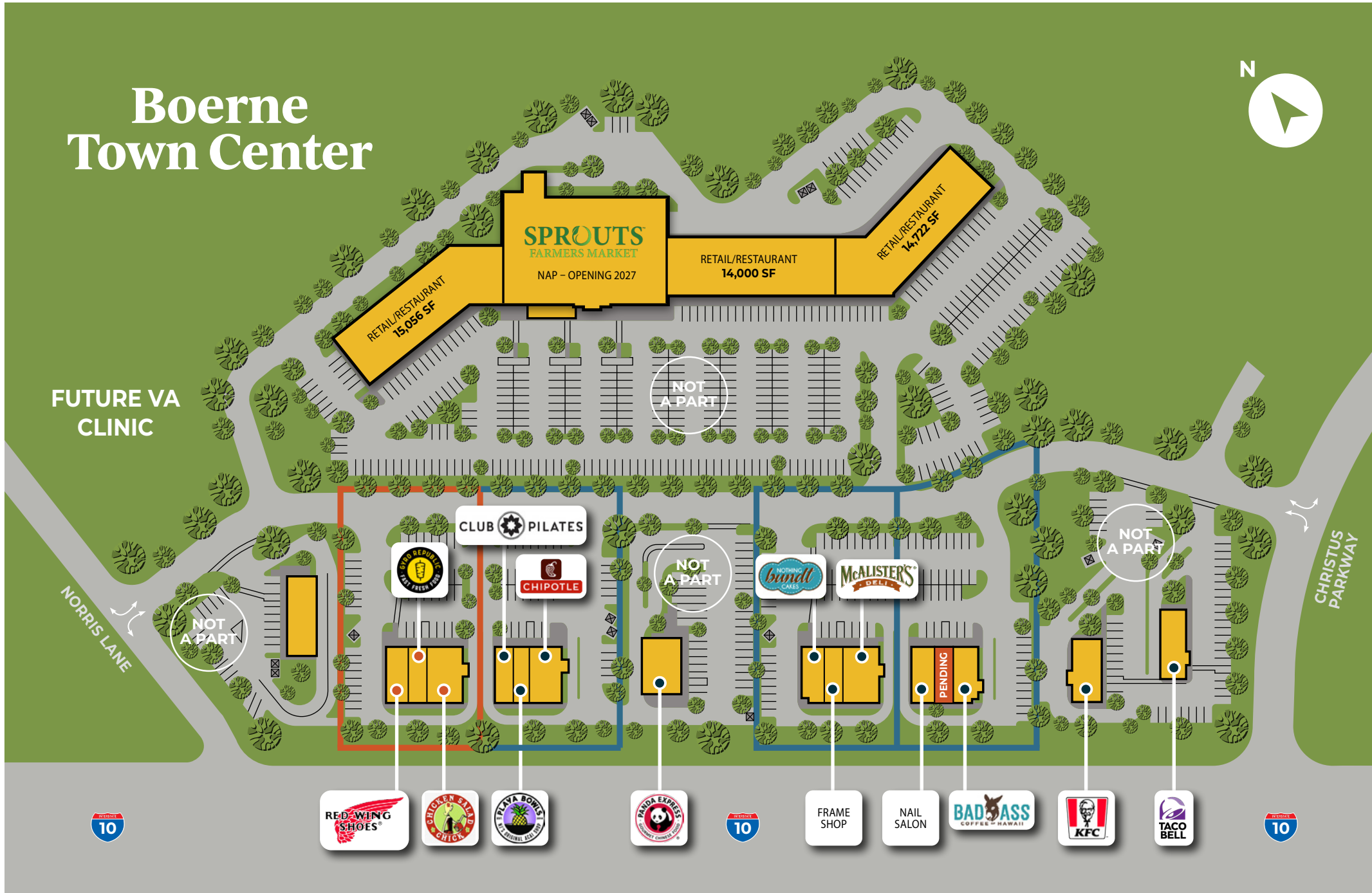
1.159

Acres



Egress

# Boerne Town Center





## CHICKEN SALAD CHICK.

Chicken Salad Chick serves more than a dozen original chicken salad flavors plus fresh sides, soups, sandwiches, desserts and catering. Chicken Salad Chick has grown to more than 335 restaurants across 23 states and continues its rapid expansion driven by a network of franchise owners. The brand has earned consistent recognition from Entrepreneur, Franchise Times, Fast Casual, QSR, Southern Living and Technomic, among others.

[TENANT WEBSITE](#) ➤



Founded in 1905 and headquartered in Red Wing, Minnesota, Red Wing Shoe Company is an iconic American footwear brand rooted in a legacy of quality and craftsmanship. The company's portfolio includes well-known brands such as Red Wing Shoes and Irish Setter Boots, serving workers and outdoor enthusiasts alike. With 500+ retail locations, the company continues to grow its dealership network.

[TENANT WEBSITE](#) ➤

# National Brands in Immediate Trade Area





Located  
in a fast-  
growing  
San Antonio  
submarket

**\$156,602**

AVERAGE HOUSEHOLD INCOMES  
WITHIN A 5-MILE RADIUS

**49,633 VPD**

COMBINED ALONG I-10 AND  
I-10 FRONTAGE ROADS

**31 Miles**

FROM DOWNTOWN  
SAN ANTONIO

Immediate Trade Area | 12

Boerne High School

Dr. Ferdinand L. Herff Elementary School

Boerne-Samuel V. Champion High School

SPEC'S  
WINE SPIRITS FINER FOODS  
AutoZone  
jiffy lube  
cricket  
Jersey Mikes  
planet fitness  
ACE Hardware  
BURGER KING

Walmart Supercenter

Pizza Hut AT&T

SUBWAY verizon

23,888 VPD

S. MAIN ST

Land Owned by  
CHRISTUS Health.

SPROUTS FARMERS MARKET  
NAP - Opening 2027

CHRISTUS PARKWAY

WELLS FARGO

Future VA Clinic

Building 6

Building 5

Building 3

Building 2

PANDA EXPRESS CHINESE KITCHEN

49,633 VPD

FRONTAGE ROAD

FRONTAGE ROAD

INTERSTATE 10

87

INTERSTATE 10

87





  
**Fabra Elementary School**

  
**Texas Department of Public Safety**


  
**Boerne Middle School North**

**49,633 VPD**


**23,888 VPD**

**SPROUTS FARMERS MARKET**  
NAP - Opening 2027

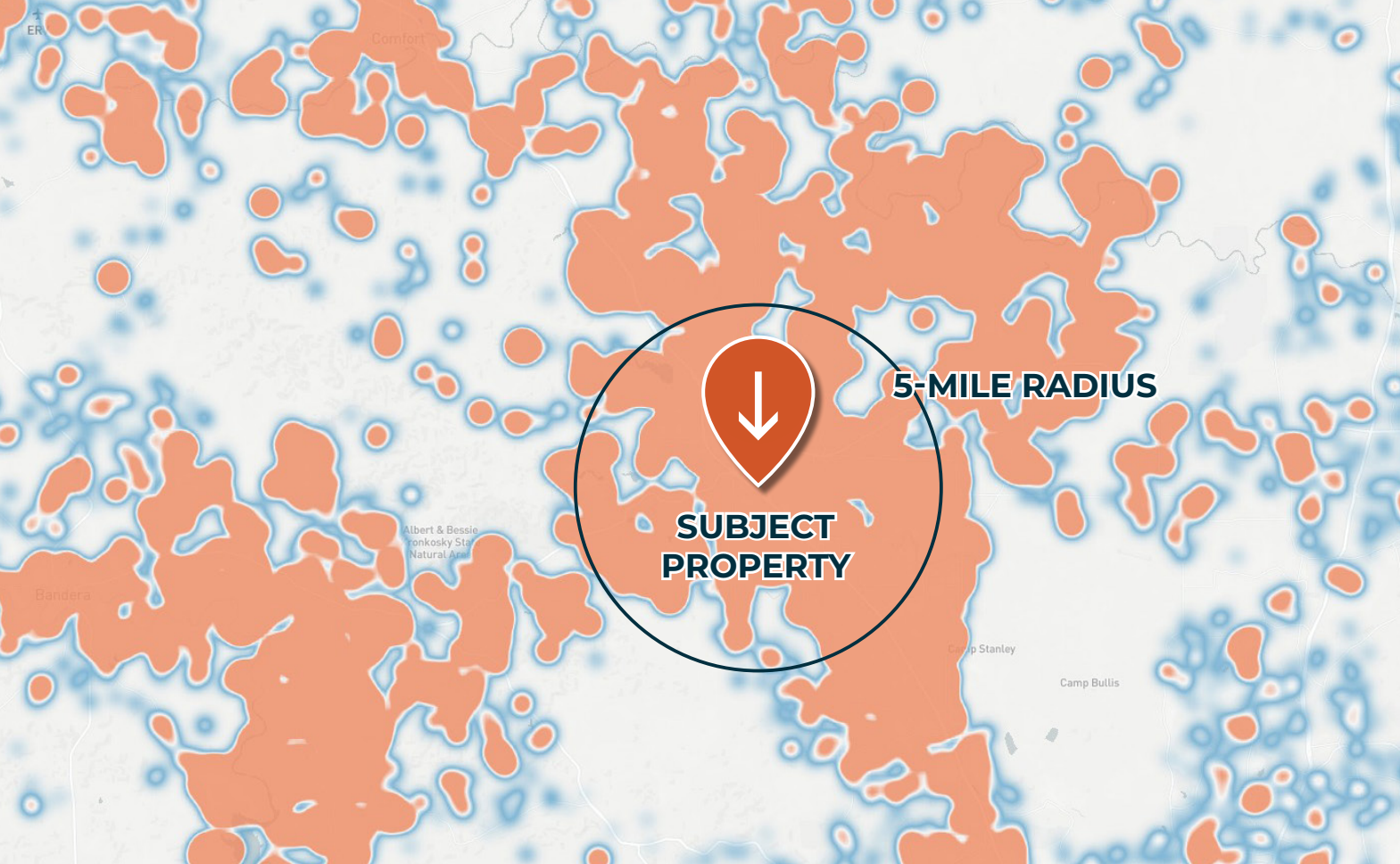
Land Owned by  
**CHRISTUS Health**

  
**Coming Soon**

   
**Coming Soon**

 **Retina Consultants of Texas™**





## Visitation Heatmap

The shading on the map above shows the **home location of people who visited the nearby Walmart Supercenter** over the past 12 months.

## Visitation Data

**1.8M Visits**

OVER THE PAST 12 MONTHS TO THE NEARBY WALMART SUPERCENTER

**29 Min**

AVERAGE DWELL TIME AT THE NEARBY WALMART SUPERCENTER

\*Map and data on this page provided by Placer.ai. Placer.ai uses location data collected from mobile devices of consumers nationwide to model visitation and demographic trends at any physical location.

## Demographics

### Ring Radius Population Data



	1-Mile	3-Mile	5-Mile
2025	2,926	22,136	35,449
2035 PROJ.	3,238	25,780	41,864

### Ring Radius Household Income Data



	1-Mile	3-Mile	5-Mile
AVERAGE	\$87,350	\$144,483	\$156,602
MEDIAN	\$59,999	\$111,091	\$120,229

\*Demographic Data on this page provided by Placer.ai, sourced from Popstats 2025 dataset.

# Joint Base San Antonio

The Largest Joint Base in the Department of Defense (DOD)

## Overview

- Joint Base San Antonio was established through the consolidation of Fort Sam Houston, Lackland Air Force Base, and Randolph Air Force Base.
- JBSA is now the largest joint base in the Department of Defense, serving as a hub for training, innovation, and support.
- JBSA spans 45,077 acres across the greater San Antonio metropolitan area and supports over 240,000 people through direct and indirect employment.

## Installations

- **Lackland AFB** is the entry point for most enlisted airmen. It consists of more than 24,000 active-duty members and is the site of the 37th Training Wing, the largest training wing in the U.S. Air Force. This wing comprises three training groups and one academy for recruits entering the Air Force, Space Force, Air Force Reserve, and Air National Guard, graduating more than 80,000 students each year.
- **Randolph AFB** serves a critical personnel and education role. It is the headquarters of the Air Education and Training Command (AETC) and the Air Force Personnel Center (AFPC).
- **Fort Sam Houston** is one of the oldest posts in the U.S. Army, dating back to 1845, and is home to Brooke Army Medical Center, which is staffed by approximately 8,500 personnel including active-duty military, federal civilian employees, contractors, and volunteers.
- **Camp Bullis** Military Training Reservation is a 27,000-acre U.S. Army training camp located sixteen miles northwest of downtown San Antonio. It serves as a major training hub featuring 20 live firing ranges and maneuver areas for Army, Air Force, and Marine units, as well as field training facilities supporting Brooke Army Medical Center's medical personnel.



**240,403**

BASE SUPPORTED  
POPULATION

**\$55 Billion**

ECONOMIC IMPACT ON THE  
TEXAS ECONOMY



Downtown San Antonio

# San Antonio, TX

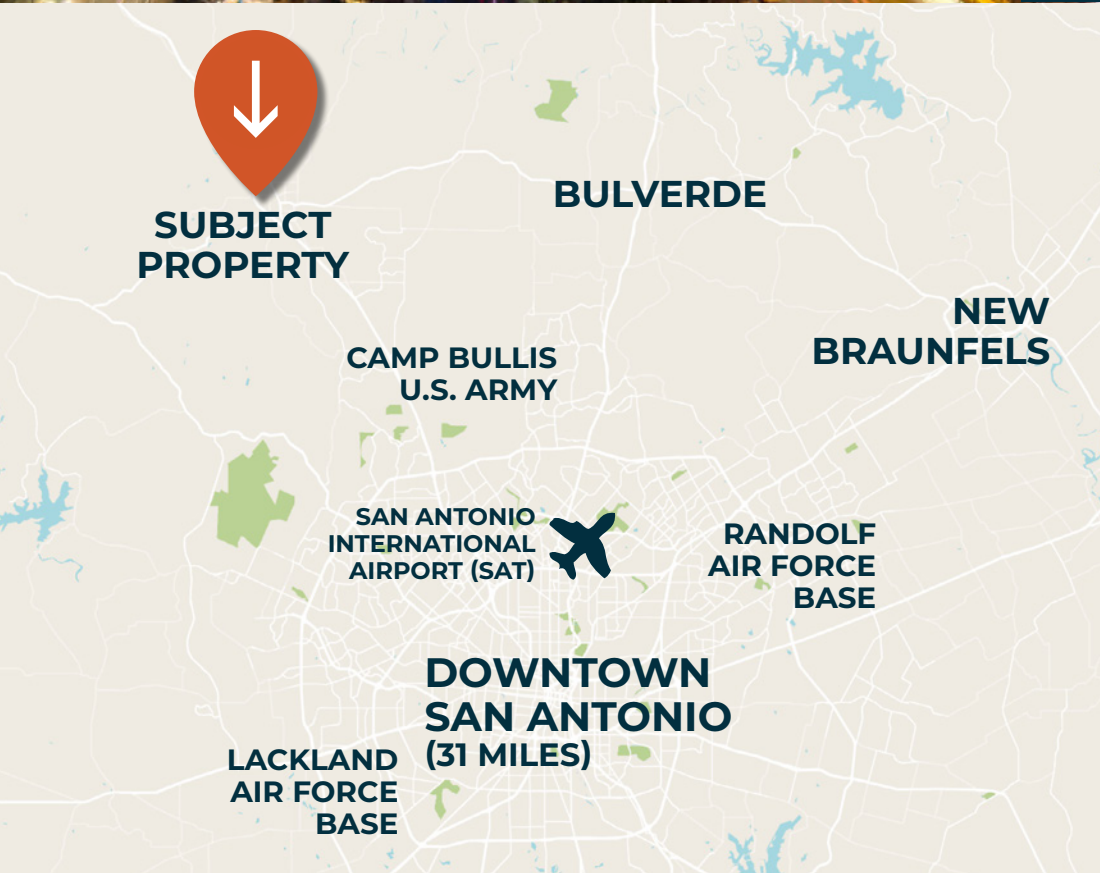
One of America’s fastest-growing and most economically dynamic cities

## Population and GDP Growth

- San Antonio has become the sixth-largest city in the United States in terms of population, passing Philadelphia for the first time, with an estimated 1,570,314 residents in 2026.
- The broader San Antonio metro area reached a population of 2,525,000 in 2025, continuing a steady year-over-year upward trend.
- San Antonio’s gross metropolitan product reached \$192.8 billion in 2024, ranking 33rd in the nation, and is expected to climb to nearly \$210 billion in 2026 — representing approximately 7% of Texas’s gross state product.

## Economic & Industry Drivers

- The city’s economy is anchored by four traditional industries — tourism, healthcare, the military, and education — and is also home to the corporate headquarters of USAA, Valero Energy, NuStar, Whataburger, and HEB Grocery stores.
- San Antonio is known as “Military City USA,” with Joint Base San Antonio serving as a major economic anchor, directly and indirectly supporting over 240,000 residents.
- The healthcare and biosciences sectors generate over \$42 billion in economic activity each year, employing nearly one in five workers in the city.
- Job growth in early 2025 was led by construction, educational and health services, and government, with total employment growth outpacing the national average year over year.



**2.5 Million**

SAN ANTONIO MSA ESTIMATED POPULATION (2025)

**\$192.8 Billion**

SAN ANTONIO MSA GDP

# Boerne Town Center

[34702 Interstate Hwy 10 W, Boerne, TX 78006](#) 

PRICE: **\$15,494,000**    CAP RATE: **5.76%**

NOI **\$892,082**

PRICE PER SF **\$713.55**

OCCUPANCY **100%**

NO. OF TENANTS **12**

TOTAL RENTABLE AREA **21,714 SF**

LOT SIZE **4.733 AC**



## BUILDING 2

PRICE: **\$3,760,000**

CAP RATE: **5.70%**

[VIEW OM](#) 



## BUILDING 3

PRICE: **\$4,324,000**

CAP RATE: **5.65%**

[VIEW OM](#) 



## BUILDING 5

PRICE: **\$3,771,000**

CAP RATE: **5.80%**

[VIEW OM](#) 



## BUILDING 6

PRICE: **\$3,639,000**

CAP RATE: **5.90%**

[VIEW OM](#) 



**CP PARTNERS**  
COMMERCIAL REAL ESTATE

## Contact the Team

### Joe Caccamo

jcaccamo@cppcre.com  
PH: 415.274.7394  
CA DRE# 01191110

### Lea Kuehnhackl

lea@cppcre.com  
PH: 707.484.2284  
CA DRE# 01435080

### Zeb Ripple

zripple@cppcre.com  
PH: 415.274.2702  
CA DRE# 01242540

### Chris Peters

cpetes@cppcre.com  
PH: 415.274.2703  
CA DRE# 01339983

### Scott Reid

ParaSell, Inc.  
scott@parasellinc.com  
PH: 949.942.6585  
TX LIC# 739436

In Association with ParaSell, Inc.  
A Licensed Texas Broker #9009637

Copyright ©2026 CP Partners Commercial Real Estate, Inc. | California DRE LIC# 01499268

### Building 2



### Building 3



### Building 5



### Building 6

