



OFFICE LEASE OPPORTUNITY

660 E JEFFERSON

660 EAST JEFFERSON STREET, TALLAHASSEE, FL 32301

BRENDA FRANCIS, CCIM

Broker Associate
850.510.4990
brenda@structureiq.net

DANIEL H. WAGNON, SIOR

Principal
850.656.6555 X105
daniel@structureiq.net



660 E JEFFERSON

EXECUTIVE SUMMARY



OFFERING SUMMARY

Sale Price:	Subject To Offer
Building Size:	12,082 SF
Available SF:	2,593 SF
Lot Size:	0.68 Acres
Year Built:	1988
Renovated:	2023
Zoning:	Central Urban

PROPERTY OVERVIEW

One first floor suite of 2593 square feet is available with one or two conference rooms plus private offices, open areas, break room and men's and women's restrooms, all private to this suite.

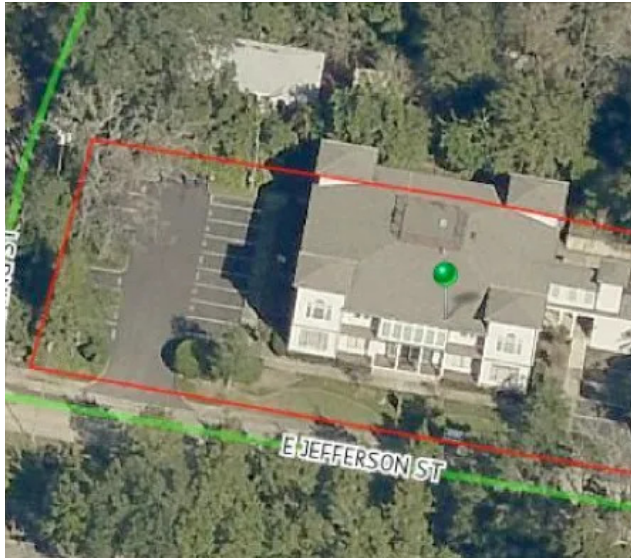
PROPERTY HIGHLIGHTS

- 2593 SF Suite in Downtown Area
- Full Service Lease in Professional Office Building
- Convenient to the State Capitol, Leon County Courthouse, Cascades Park
- Convenient to the Florida Dept of Transportation
- Across the Street from the Florida Bar Building
- On-site Dedicated Surface Parking
- Just off Franklin Blvd, E Tennessee Street and Apalachee Parkway

660 EAST JEFFERSON STREET, TALLAHASSEE, FL 32301

660 E JEFFERSON

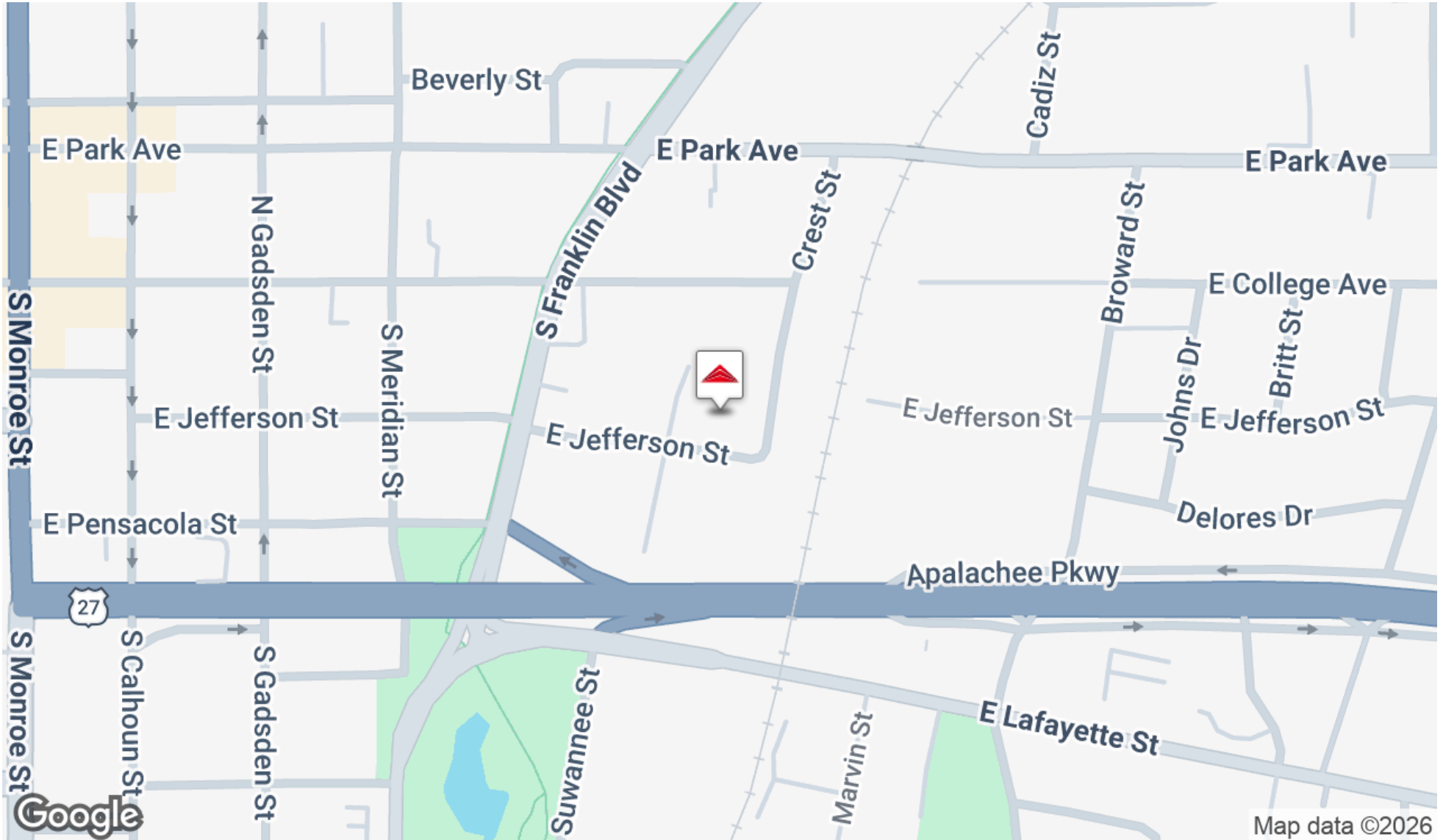
ADDITIONAL PHOTOS



660 EAST JEFFERSON STREET, TALLAHASSEE, FL 32301

660 E JEFFERSON

LOCATION MAP



660 E JEFFERSON

DEMOGRAPHICS MAP & REPORT

POPULATION

	1 MILE	3 MILES	5 MILES
Total Population	6,696	88,939	167,634
Average Age	32.7	28.6	29.2
Average Age (Male)	31.6	27.9	28.5
Average Age (Female)	35.0	29.3	29.7

HOUSEHOLDS & INCOME

	1 MILE	3 MILES	5 MILES
Total Households	3,422	37,294	70,464
# of Persons per HH	2.0	2.4	2.4
Average HH Income	\$46,312	\$43,119	\$46,765
Average House Value	\$261,364	\$214,343	\$208,766

2020 American Community Survey (ACS)

