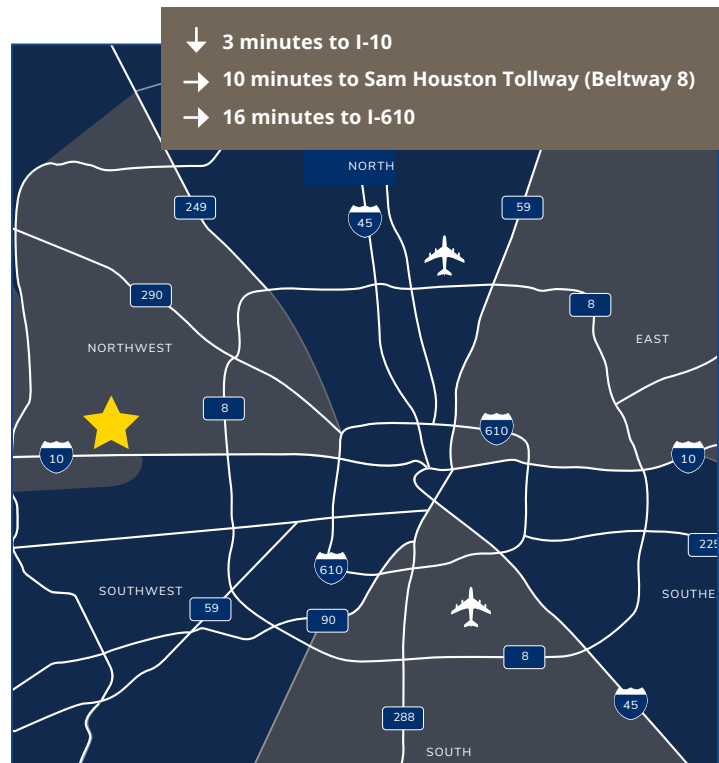




1,685 SF
Available

PROPERTY HIGHLIGHTS

- 4 buildings
- 175,665 SF total
- Rear-load configuration
- 14'-25' clear height



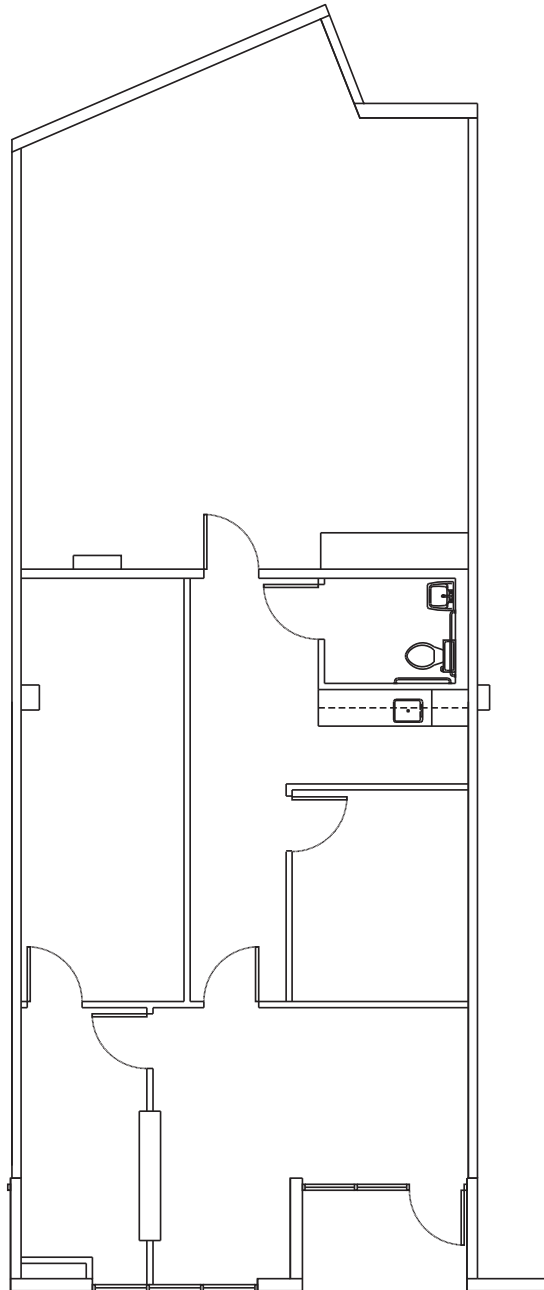
FLOORPLAN

1718 N. FRY ROAD
Suite 460
HOUSTON, TX 77084

1,685 SF
Available

SUITE 460

- WAREHOUSE: 669
- OFFICE: 1,685

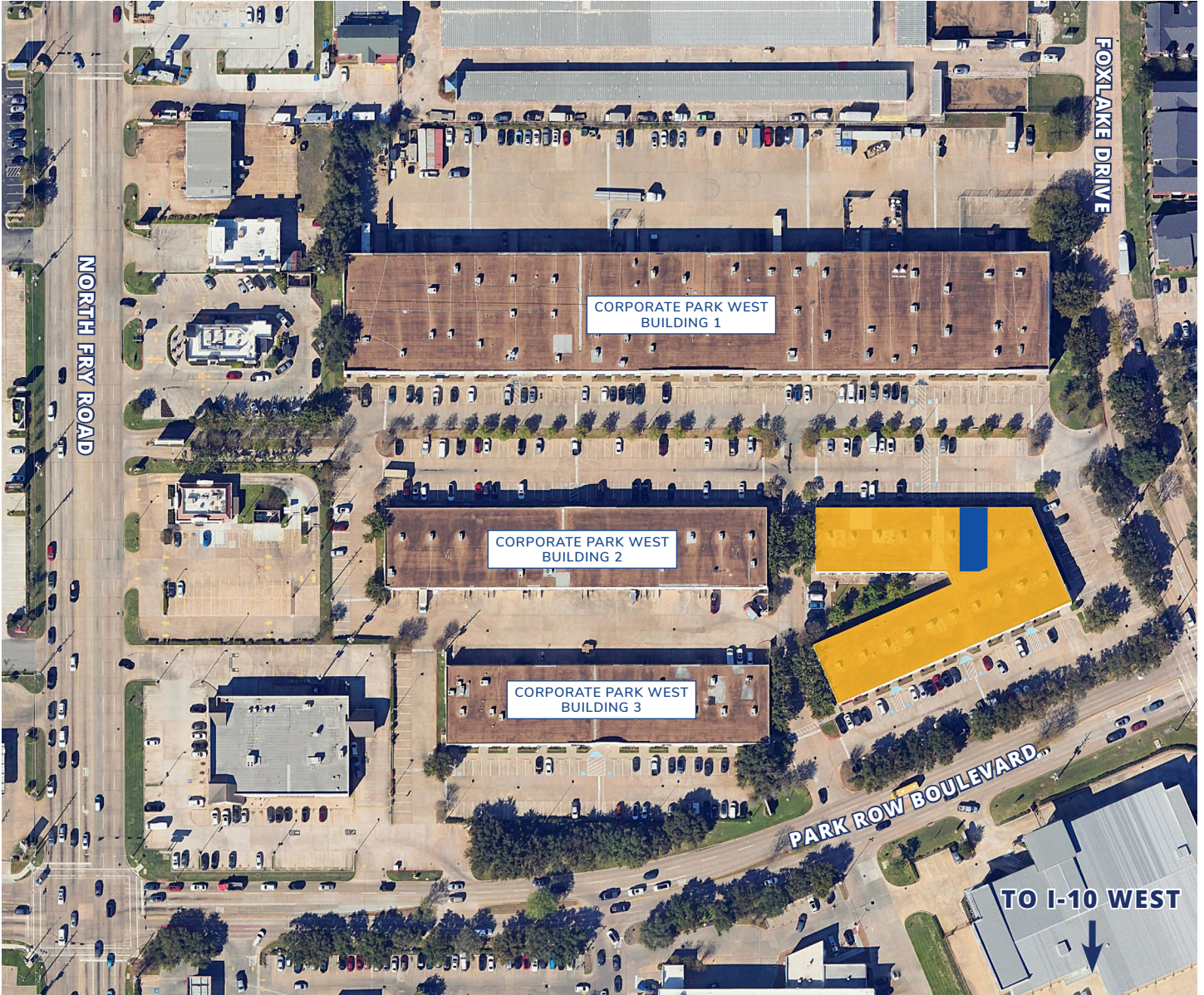


FOR LEASING INFORMATION, PLEASE CONTACT:
MEG ZSCHAPPEL | 713.300.0284 | meg.zschappel@streamrealty.com
WILSON KELSEY | 713.300.0283 | wilson.kelsey@streamrealty.com
www.streamrealty.com



PARK OVERVIEW

1718 N. FRY ROAD
Suite 460
HOUSTON, TX 77084



● 1718 N. FRY ROAD ● SUITE 460 ● INGRESS/EGRESS



FOR LEASING INFORMATION, PLEASE CONTACT:
MEG ZSCHAPPEL | 713.300.0284 | meg.zschappel@streamrealty.com
WILSON KELSEY | 713.300.0283 | wilson.kelsey@streamrealty.com
www.streamrealty.com



AMENITIES

1718 N. FRY ROAD
Suite 460
HOUSTON, TX 77084



FOR LEASING INFORMATION, PLEASE CONTACT:
MEG ZSCHAPPEL | 713.300.0284 | meg.zschappel@streamrealty.com
WILSON KELSEY | 713.300.0283 | wilson.kelsey@streamrealty.com
www.streamrealty.com

