



STAR METALS



WEST MIDTOWN

685 11TH STREET OUTPARCEL
RETAIL OPPORTUNITY

PRIME OUTPARCEL OPPORTUNITY

A second-generation, two-story retail space totaling 6,748 SF, prominently positioned along the Star Metals District valet lane.

AT THE CENTER OF IT ALL

Steps from a curated mix of destinations including Ladybird Westside (opening June 2026), FUM, Incognito, Lucky Star, and more.

KEY HIGHLIGHTS

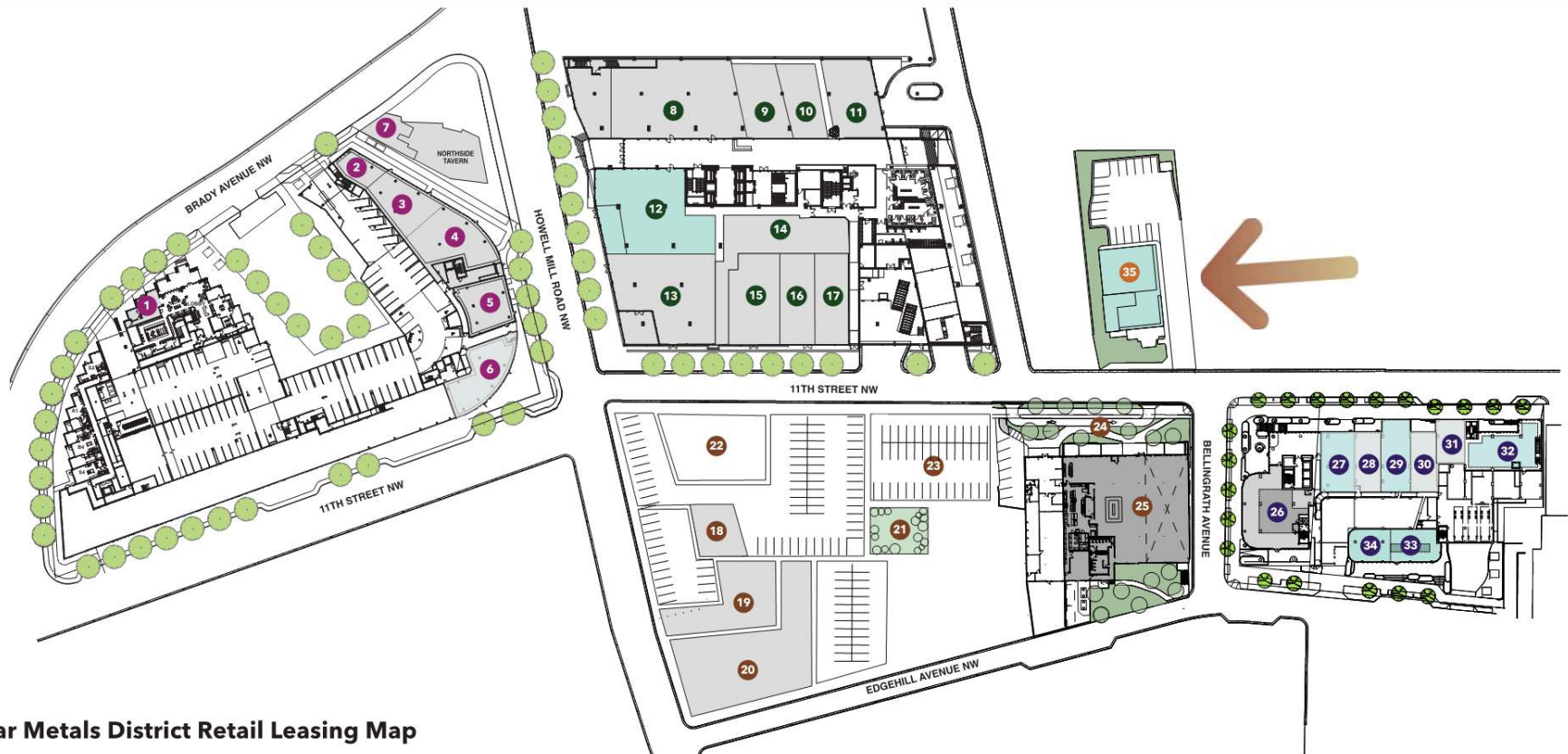
- 25 dedicated retail parking spaces
- Access to Star Metals valet at a reduced rate
- Walkable to 2,000+ residences within 0.5 miles

POSITIONING

685 11th Street is ideally suited for a restaurant, bar, or nightlife concept—offering a rare opportunity to anchor within one of West Midtown's most dynamic districts.



ALLEN MORRIS COMPANY



Star Metals District Retail Leasing Map

Sentral at Star Metals	Star Metals Offices	Star Metals District	Stella	Star Metals Retail
<ul style="list-style-type: none"> 1 Prevail Coffee Roasters 2 The Salty 3 Y-Bar Yeppa* 4 Savi Provisions 5 Sweetgreen 6 Ghee Indian Kitchen 7 Y-Bar Yeppa* 	<ul style="list-style-type: none"> 8 Eden by Delbar* 9 Lucky Star 10 Luca Fine Art 11 Hayakawa 12 Available Retail Space 13 Flight Club Darts 14 Bach Fitness 15 Rumble Boxing 16 The NOW Massage 17 FACE FOUNDRIE 	<ul style="list-style-type: none"> 18 Party Execs 19 Horizon Roofscapes 20 Ger-Art 21 Star Metals Dog Park 22 Incognito 23 Star Metals District Parking 24 Star Metals Valet & Linear Park 25 Ladybird* 	<ul style="list-style-type: none"> 26 FUM 27 Available Retail Space 28 Peachy 29 Available Retail Space 30 Skin Laundry 31 Kale Me Crazy* 32 Available Retail Space 33 Available Retail Space 34 Available Retail Space 	<ul style="list-style-type: none"> 35 Available Retail Space

ALLEN MORRIS COMPANY



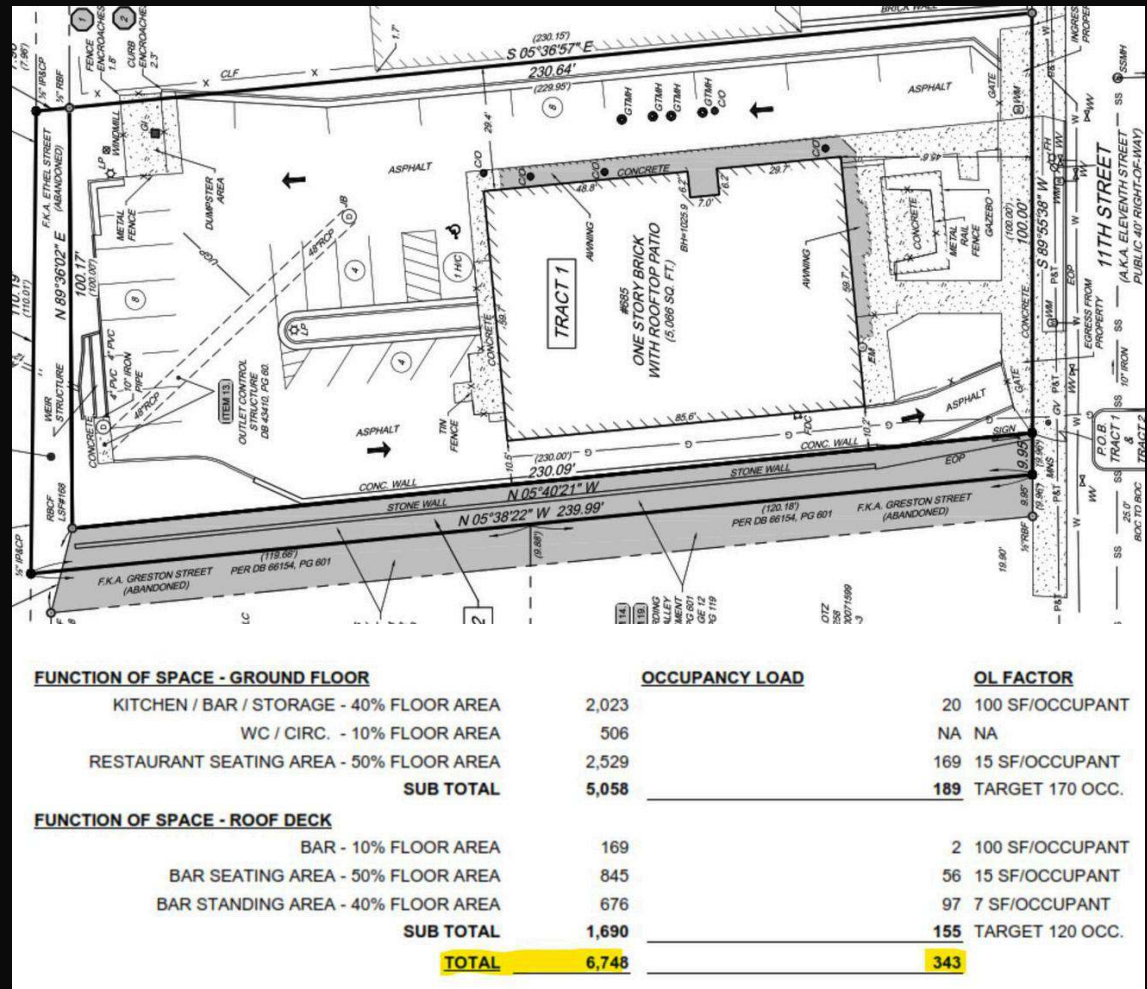
ELEVATION FROM 11TH STREET

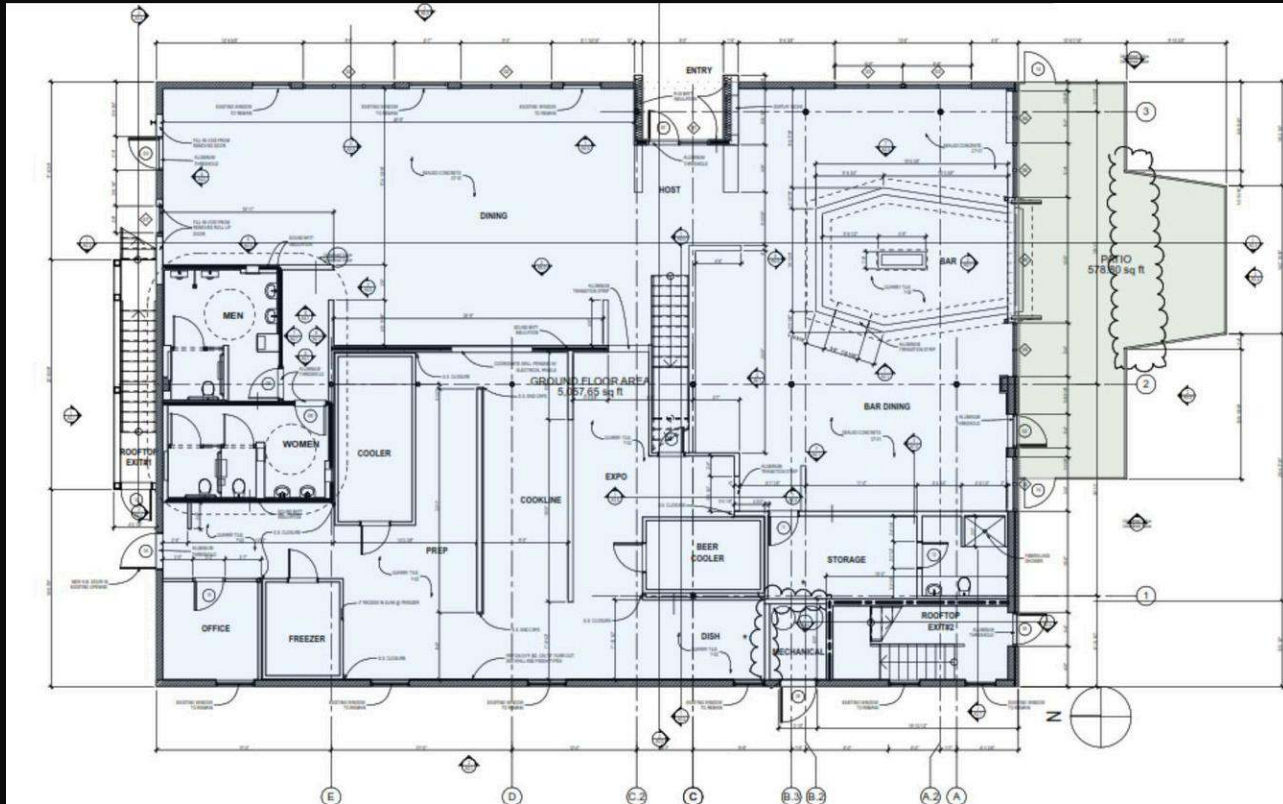
AERIAL VIEW
FROM 11TH
STREET



ALLEN MORRIS COMPANY

SITE PLAN, SQUARE FOOTAGE & OCCUPANCY





FLOOR PLAN

FIRST FLOOR

STAR METALS DISTRICT RETAIL ECOSYSTEM



Lucky Star
Lucky Star is a cafe serving coffee, Japanese-inspired drinks, and pastries with a crafted breakfast and lunch menu. By night, craft cocktails and dinner.



Skin Laundry
A modern skincare destination delivering medical-grade laser facials that are quick, effective, and effortlessly routine.



Bach Fitness
Premier fitness studio offering full functional strength training, bodywork, personal training, and recovery.



The Electric Room
A private floor in West Midtown's Star Metals Office building, where elegant interiors lead to the rooftop terrace's stunning views of the Atlanta skyline.



Eden by Delbar
Eden is a lively and vibrant Middle Eastern eatery that combines the excitement of a hip tapas-style dining experience with a retro ambiance.



The Salty
Artisanal donut shop & bakery focusing on chef-made, craft donuts, and baked goods with a unique coffee program.



Hayakawa
Intimate and elevated omakase that captures the experience of traditional sushiyas in Japan.



FŪM
A bold new expression of contemporary Italian—where regional sourcing, dry-aged meats, handmade pastas, and open-fire cooking come together.



Prevail Coffee
Exceptional coffee crafter with patient respect for land and labor. Partnered with coffee growers from around the globe to bring you unique flavors.



The NOW Massage
The NOW offers a space to escape the daily pressures of life and recharge your energy and spirit through the healing benefits of massage therapy.



Rumble Boxing
Rumble Boxing combines the sweet science of boxing with the transformative power of strength training.



Incognito
Incognito is a high-end cocktail bar intentionally disguised with the unpretentious charm of a dive/sports bar. It blends elevated mixology with the comfort, grit, and approachability of a neighborhood hangout inviting guests to enjoy world-class drinks.



Savi Provisions
Neighborhood destination market with locally-sourced gourmet and organic foods, wines, and spirits.



Sweetgreen
A crave-able bowl featuring locally sourced ingredients that are always fresh and satisfying. Bold flavors and nutrient-dense ingredients.



IMPORTANT INFORMATION

General: This presentation does not contain all the information that a prospective investor would need in investigating the Company or the Project, and may be subject to updating, withdrawal, revision or amendment. No representation or warranty, express or implied, is or will be given by the Allen Morris Company or its employees, affiliates or advisers as to the accuracy or completeness of the presentation or the information or opinions contained therein. The contents of this presentation are strictly confidential and proprietary. All recipients expressly agree not to disclose any information contained herein nor distribute this presentation to any person without express authorization from the Sponsor. Except as otherwise expressly stated, the information in this presentation is current only as of the date on the first page of this document. The Sponsor assumes no obligation, and it specifically disclaims any intention or obligation, to update any information in this brochure, whether as a result of new information, future events or otherwise.

Not an Offer: This presentation is for discussion purposes only and does not constitute an offer to sell, or a solicitation of an offer to buy, any securities or interests in the Company or the Project. Any such offer or solicitation, if made at all, will be pursuant to a separate document and other related agreements. This presentation does not contain all information required to evaluate a potential investment. ©2026 The Allen Morris Company. All rights reserved.

This Presentation contains views and opinions which, by their very nature, are subject to uncertainty and involve inherent risks. Predictions or forecasts, described or implied, may prove to be wrong and are subject to change without notice. References to targeted returns or other goals that The Allen Morris Company seeks to achieve are aspirational only and should not be considered a prediction or guarantee that such results will be achieved. Investments involve a risk of loss of capital. Past performance is not a guarantee of future results.

Certain information contained in this Presentation constitutes "forward-looking statements," which can be identified by the use of forward-looking terminology such as "may," "will," "should," "expect," "anticipate," "target," "intend," "project," "continue" or "believe," or the negatives thereof, other variations thereon or comparable terminology. Due to various risks and uncertainties, actual events or results or the actual performance of the project described herein may differ materially from the events, results or performance reflected or contemplated in such forward-looking statements. Any projections, targets, forecasts and estimates contained herein are based upon certain assumptions that The Allen Morris Company considers reasonable. Projections, targets, forecasts and estimates are necessarily speculative in nature, and it can be expected that some or all of the assumptions underlying the projections, targets, forecasts and estimates will not materialize and/or that actual events and consequences thereof will vary significantly from the assumptions upon which projections contained herein have been based. The inclusion of projections, targets, forecasts and/or estimates herein should not be regarded as a representation or guarantee regarding the reliability, accuracy or completeness of the information contained herein, and The Allen Morris Company is under no obligation to update or keep current such information. Unless otherwise indicated, the information provided herein is based on matters as they exist as of the date of preparation of this Presentation and not as of any future date. Recipients of this Presentation are encouraged to contact The Allen Morris Company to discuss the procedures and methodologies used to make the projections, targets, forecasts and estimates and other information provided herein. Certain forward-looking statements are based upon architectural concepts, project cost estimates and costs of equity and debt capital, all of which are subject to change.