



123 Minories London EC3N 1NT

–

No VAT on Rent

EPC B Rating

–

Current Availability

4th Floor Minories / Vine Street with Terrace

1st Floor Minories / Vine Street – 20 desk

GR Floor Vine Street – 6 desk

LG Floor Vine Street – Studio / Medical / Treatment

28 January 2026

**Modern Office Space to Rent
Flexible Terms**

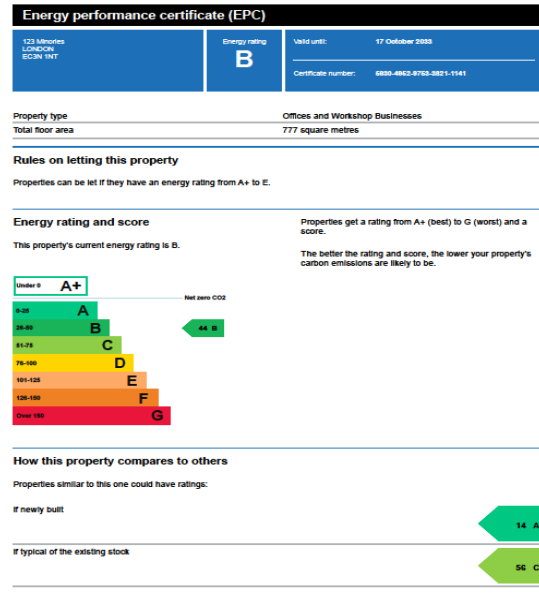
123 Minorities | EC3N 1NT

Small Self-Contained Office Building

Located Between Aldgate, Tower Hill, Fenchurch Street and DLR Stations

Meticulously Managed

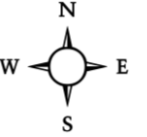
- 8 Person Meeting Room Video Conference
- Shower Room
- Lockers
- Bicycle Racks
- Lock up Storerooms
- High Speed Lease Line
- Passenger Lift
- 24 / 7 / 365 Access
- All offices with video entry phone
- EPC B Rating
- Building Not Elect for VAT



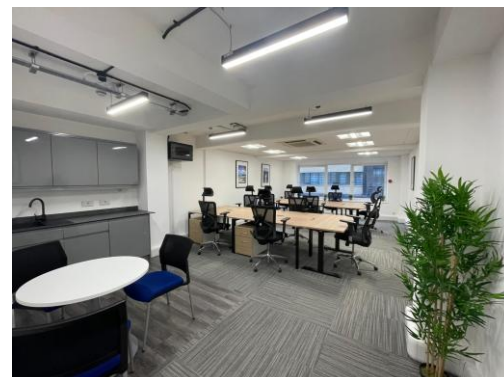
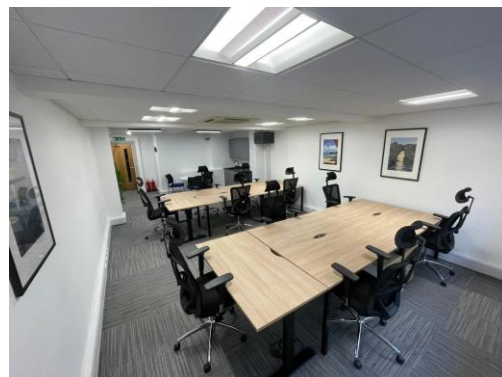
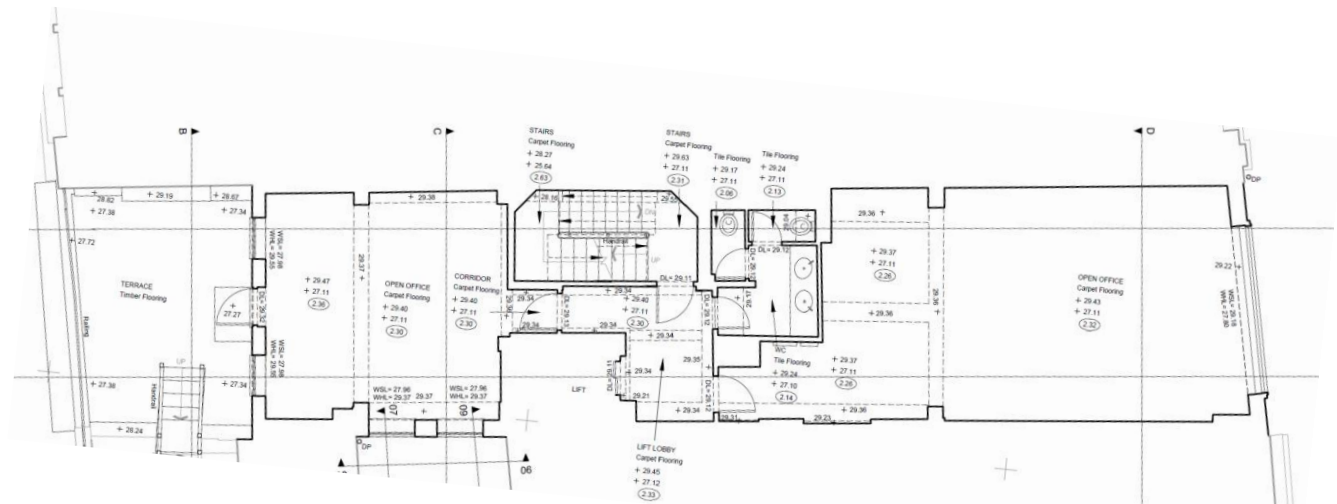
123 Minories | EC3N 1NT

Availability | 4th Floor

Dual Aspect Minories & Vine Street | Facing



- 4th Floor Office
- 750 sqft (2 rooms)
- Integrated Kitchenette
- Private Terrace
- Air-Conditioning
- Fully Modernized | 16 desk layout
- GBP 7,000 per month (all inclusive)

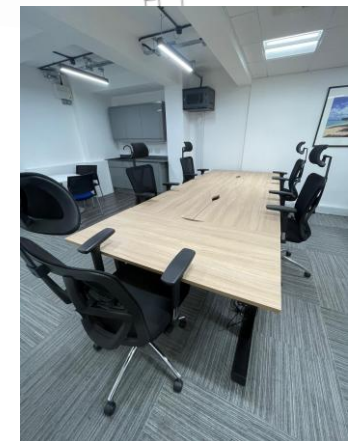
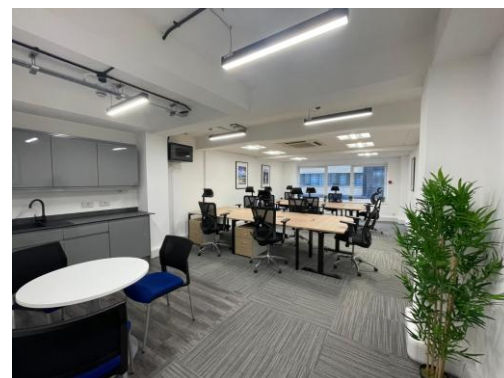
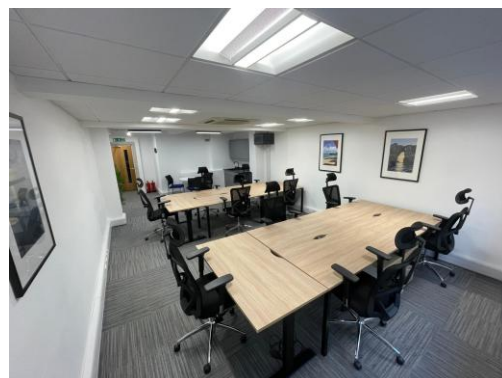
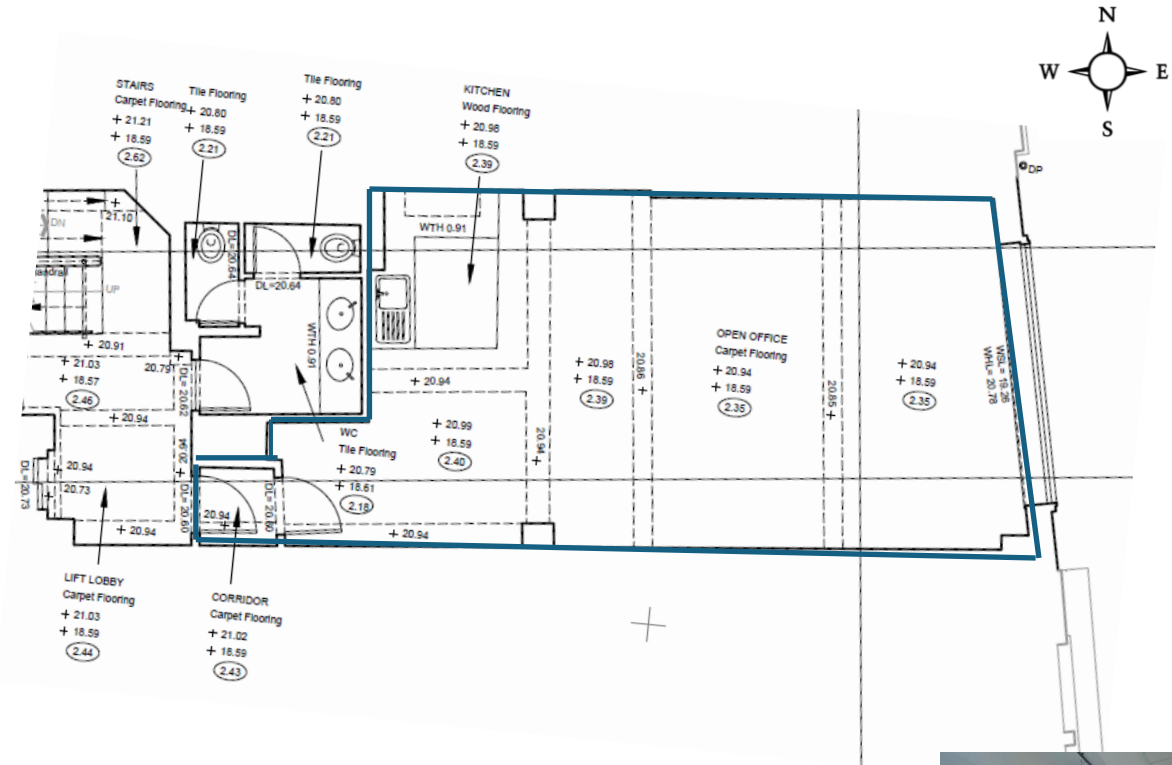


123 Minories | EC3N 1NT

Availability | 1st Floor

Minories | Facing

- 1st Floor Office
- 460 sqft
- Integrated Kitchenette
- Good Natural Daylight
- Air-Conditioning
- Fully Modernized | 10 desk layout with meeting table
- GBP 4,400 per month (all inclusive)



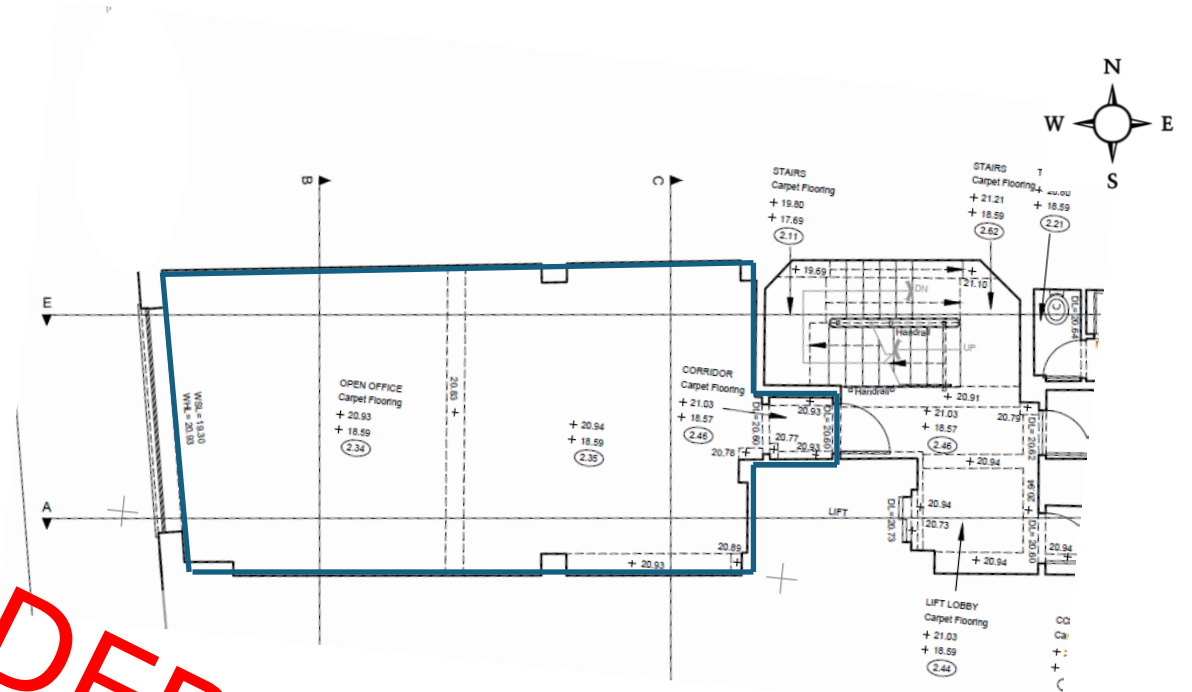
123 Minories | EC3N 1NT

Availability | 1st Floor

Vine Street | Facing

- 1st Floor Office
- 460 sqft
- Vine Street facing (West)
- Good Natural Daylight
- Air-Conditioning
- Video Entry Phone
- Fully Modernized | 10 desk layout
- GBP 4,000.00 per month (all inclusive)

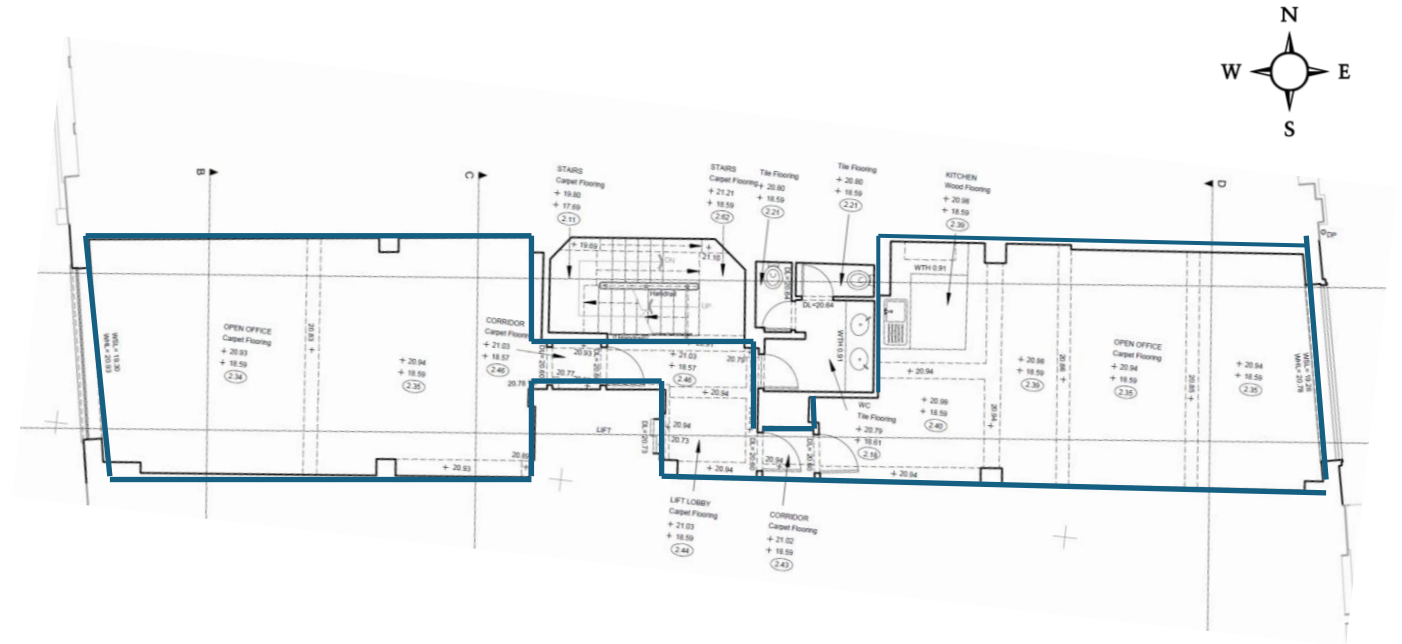
**UNDER
REFURBISHMENT**



123 Minories | EC3N 1NT

Availability | 1st Floor

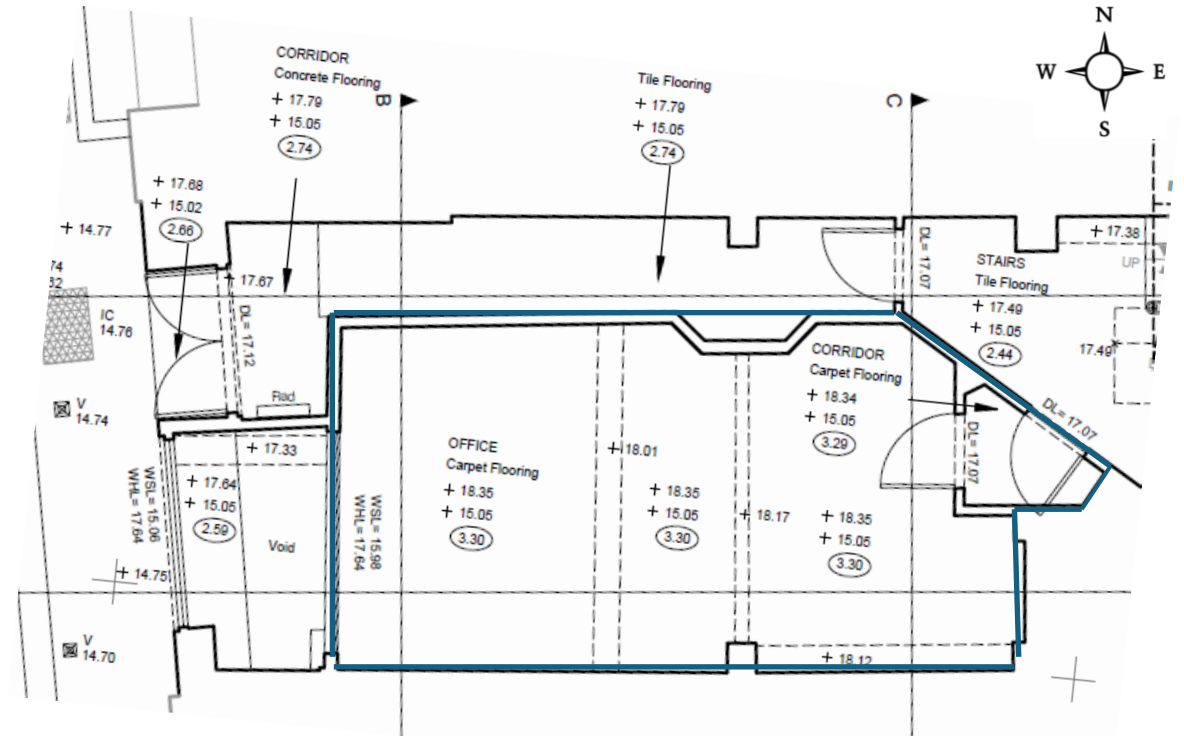
Minories & Vine Street | Facing



- 1st Floor Office
- Both Offices 920 sqft (460 sqft each)
- Minories Facing (East) & Vine Street (West)
- Good Natural Daylight
- Air-Conditioning
- Fully Modernized | 20 desk layout with meeting table
- GBP 8,000.00 per month (all inclusive)

123 Minorities | EC3N 1NT Availability | Ground Floor Vine Street | Facing

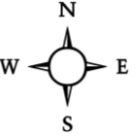
- Ground Floor Office
- 275 sqft
- Vine Street Facing (West)
- Good Natural Daylight
- Air-Conditioning
- Fully Modernized | 6 desk layout with meeting table
- GBP 2,400 per month (all inclusive)



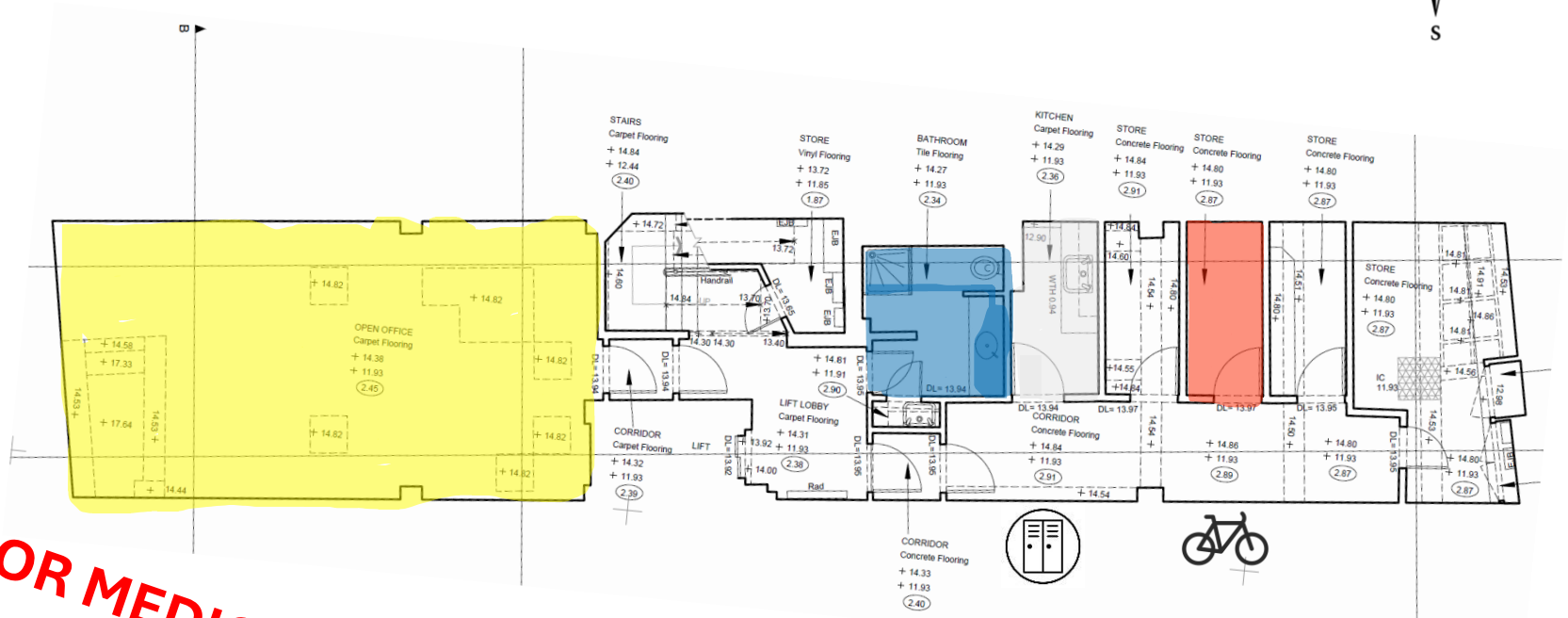
123 Minorities | EC3N 1NT

Availability | Lower Ground Floor

Vine Street | Facing



- Lower Ground Floor Studio Space
- 440 sqft
- Vine Street Facing (West)
- Good Natural Daylight
- Air-Conditioning
- Open Space Flexible Use
- Video Entry Phone
- GBP 2,200 per month all incl



**IDEAL FOR MEDICAL USE / STUDIO / TREATMENT ROOM
EASILY BLACKED OUT**

Yellow Highlight – LG Space 440sqft
 Blue Highlight – Shower Room
 Grey Highlight – Kitchenette
 Red Highlight – Private Storeroom
 Bicycle Store / Lockers

Time to Airports:

London City Airport 25 mins via DLR from Tower Gateway
Heathrow Airport 55 mins via Elizabeth Line
Gatwick Airport 50 mins via Gatwick Express and Underground

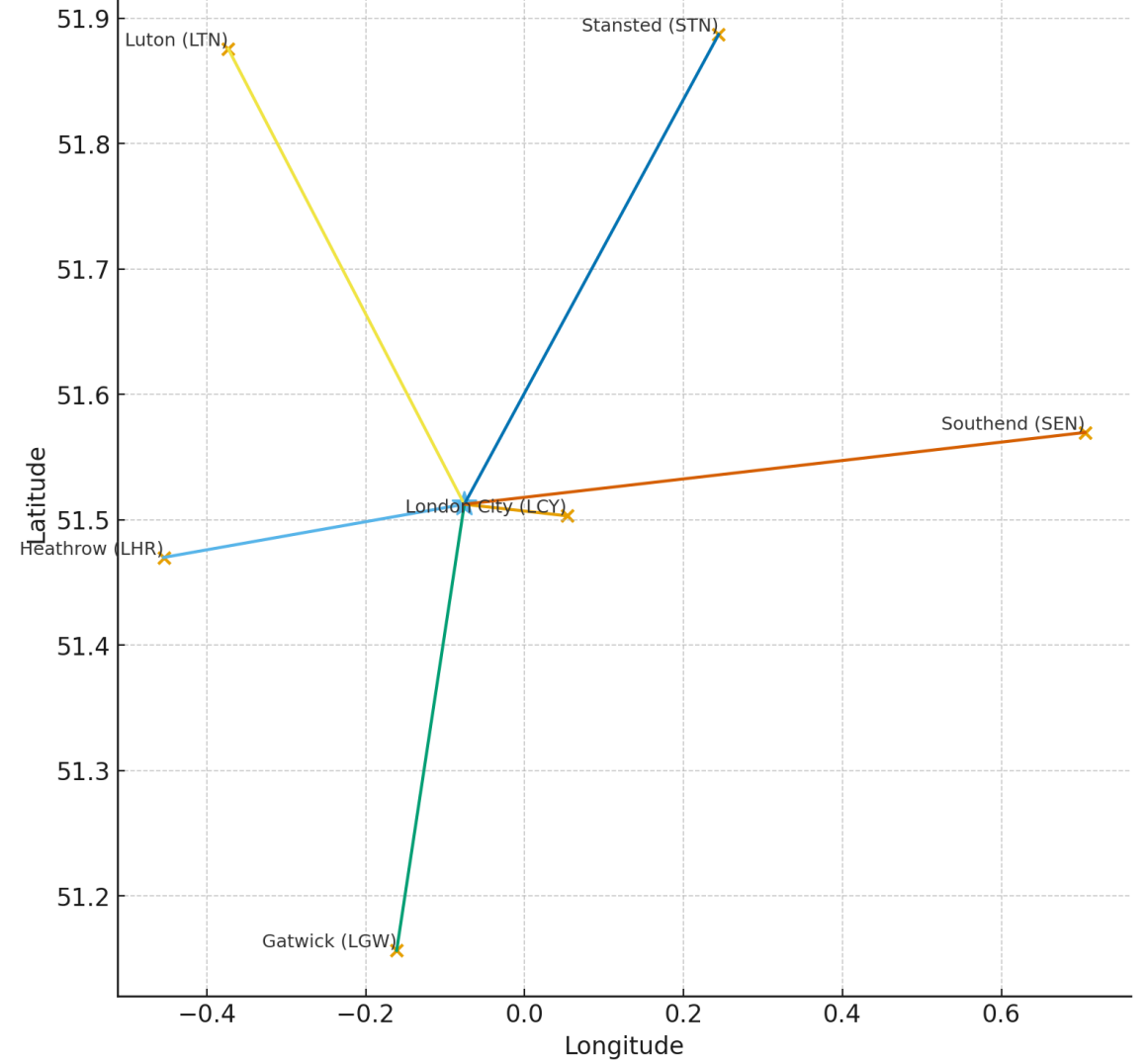
Time to:

Bond Street 20 mins via Underground
Sloane Square 25 mins via Underground
Ealing Broadway 30 mins via Underground
Chelmsford 45 mins via Overground Train
Potters Bar 45 mins via Overground Train
Southend-on-Sea 60 mins via Overground Train
High Wycombe 70 mins via Overground Train

Stations:

Tower Gateway DLR 3 mins walk
Aldgate 3 mins walk
Tower Hill 4 mins walk
Fenchurch Street 4 mins walk
Aldgate East 8 mins walk
Liverpool Street 10 mins walk

Relative positions of London airports from 123 Minories (lat/lon)



Places of Interest Near 123 Minorities | EC3N 1NT

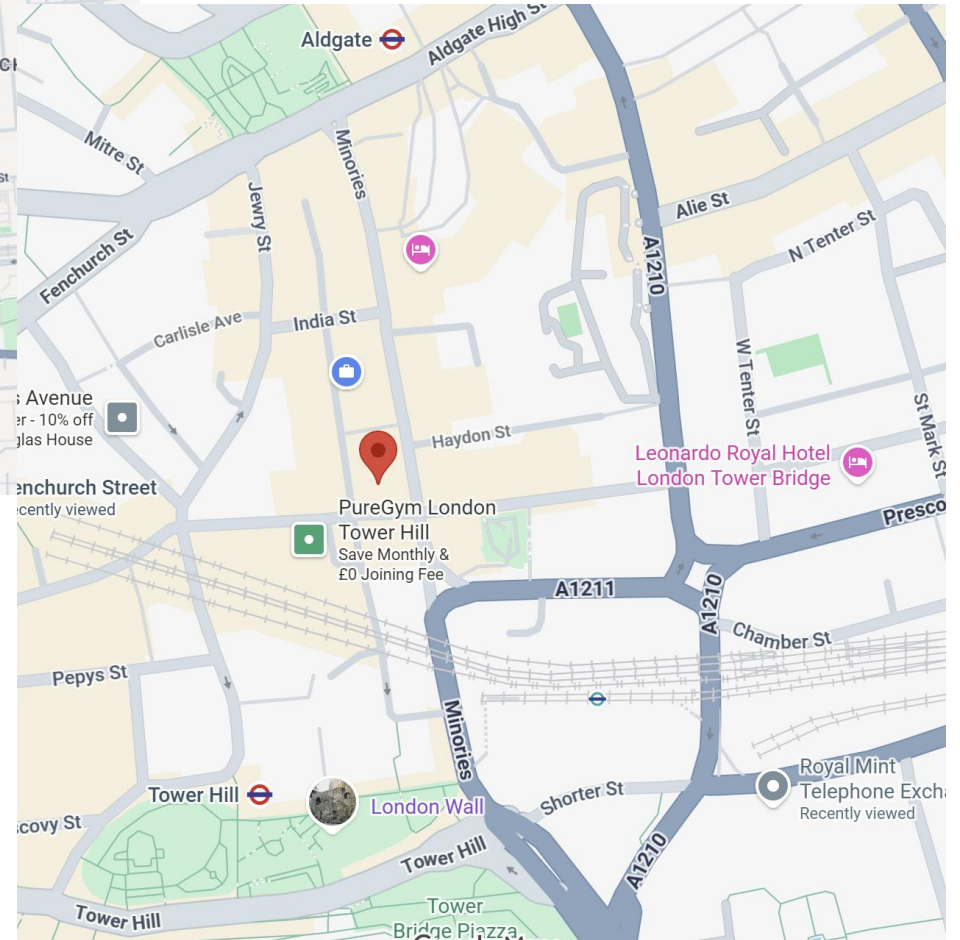
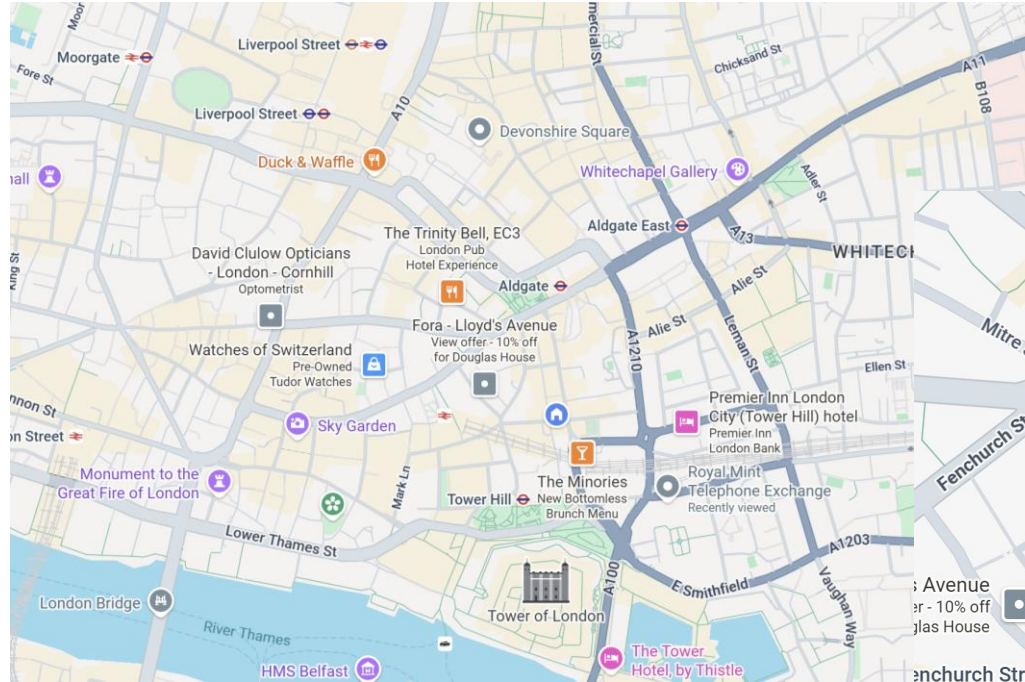
Nearby Highlights (Walking Distance)

- Tower of London** – Historic fortress & Crown Jewels (5–10 min walk)
- Tower Bridge** – Iconic landmark bridge with views & exhibition (5–10 min)
- The Monument** – Climb for skyline views, Great Fire of London memorial (10–15 min)
- London Wall Remains** – Ancient Roman city ruins near Tower Hill (5 min)
- Bank of England & Royal Exchange** – Shopping and Restaurants (10-15 min)
- St Paul's Cathedral** – Iconic dome & Whispering Gallery (15–20 min)
- Lloyds of London** – Insurance and Reinsurance Market (8 min)
- The Shard** – Tallest building in London, panoramic viewing platform (20 min)
- Royal Mint Court** – Site of new Chinese Embassy (5min)

🌟 All within easy reach for sightseeing, lunch breaks, or hosting visitors.



123 Minories London EC3N 1NT



Endeavour Management T. 0207 488 0090
George D Skinitis / E. property@endeavourmanagement.com / M. 07710 327 004