

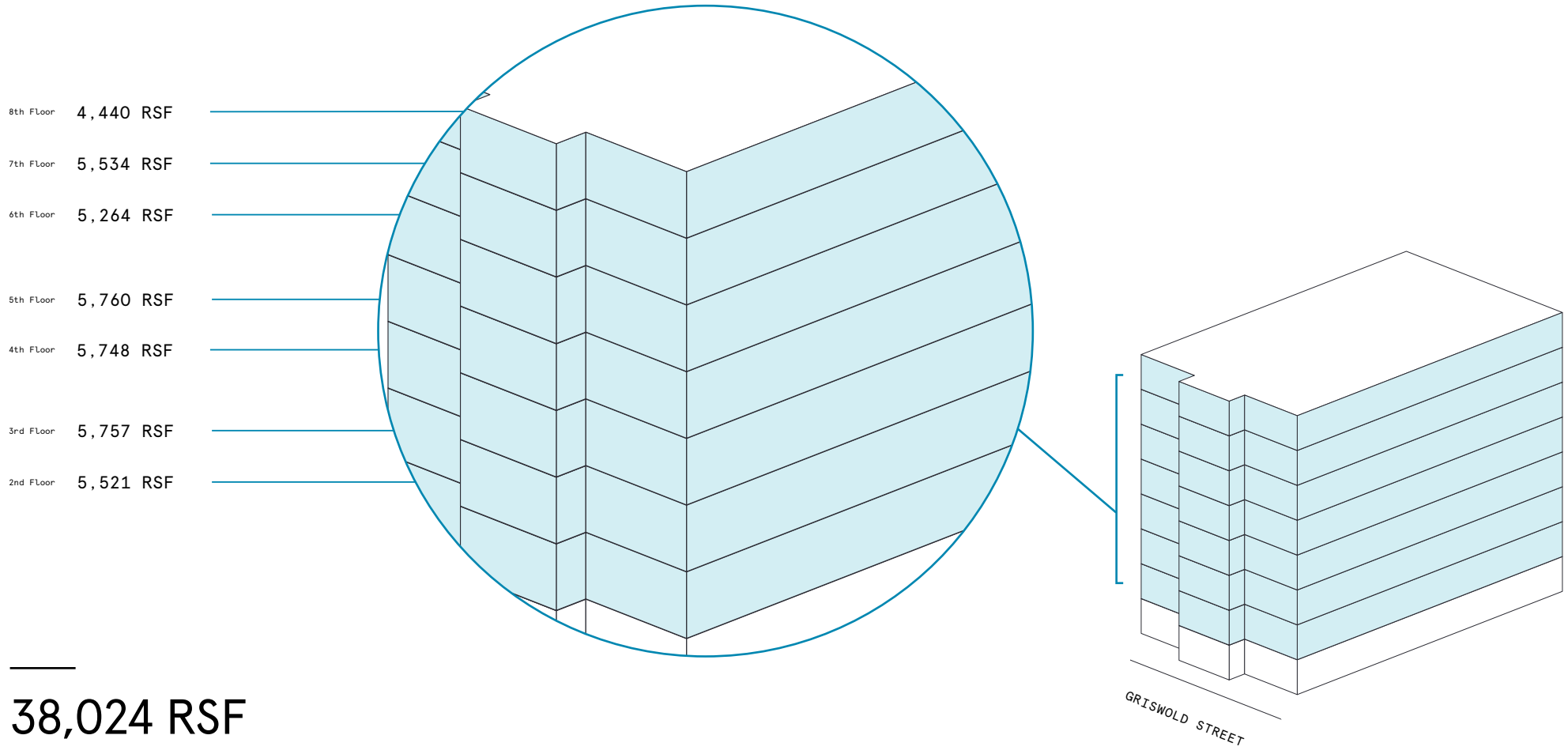


19 Clifford Street

Space availability summary

WeWork @ 19 Clifford Street
Detroit, MI

wework



38,024 RSF

TOTAL WEWORK RSF

19 Clifford Street

At a glance

Workspaces designed for productivity and creativity with flexible size & term

8

TOTAL BUILDING FLOORS

Dedicated, private suites available from 58 to 3,149 RSF

Move-in ready suites - furnished & wired

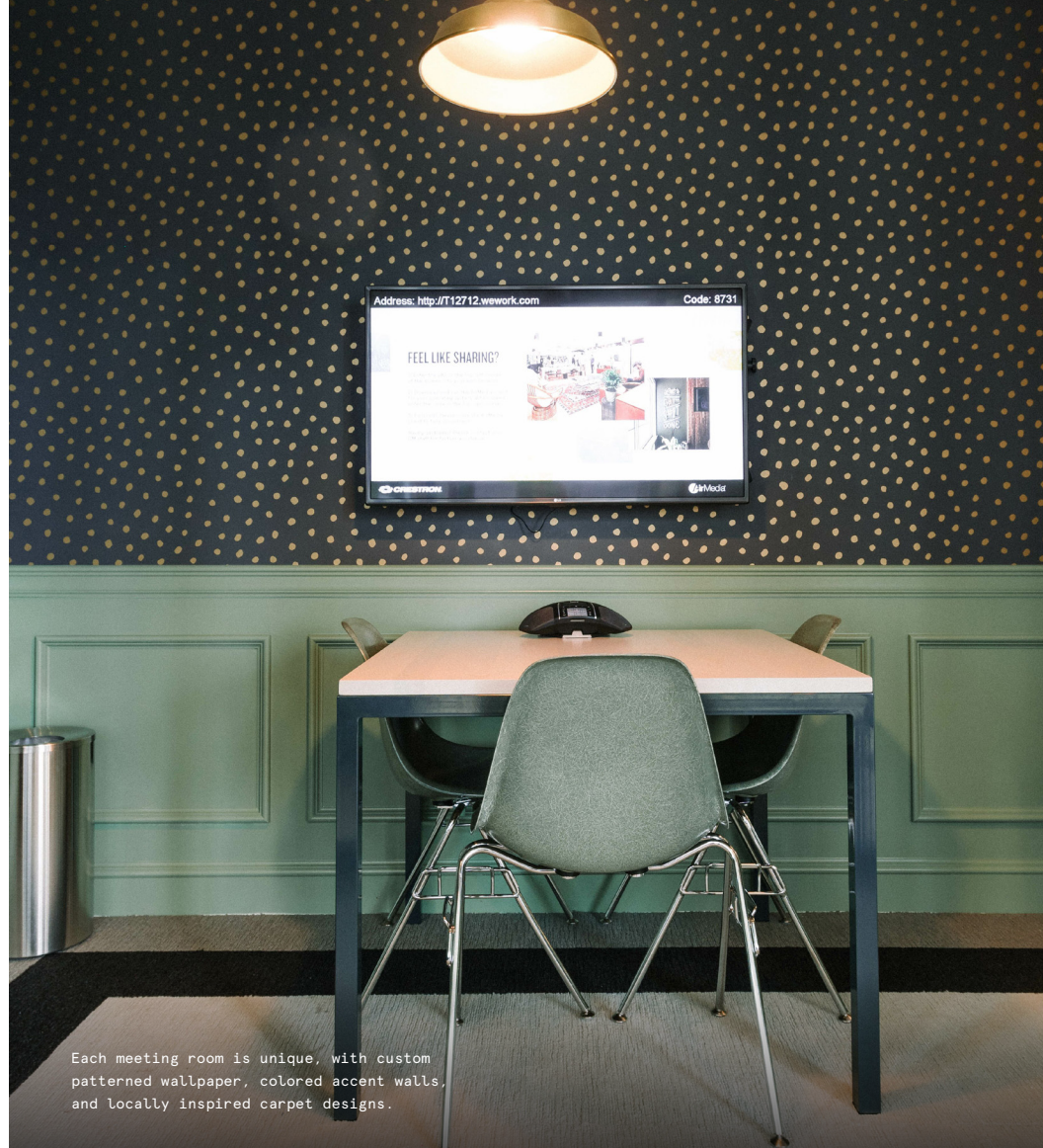
54,000

TOTAL BUILDING SQ FT

All dimensions are approximate and subject to variances. It is your obligation to independently verify the particulars of the property. WeWork reserves the right to make changes.



Graphic art, sleek pendant lighting, and pops of bright color lend artistic playfulness to common spaces.



Each meeting room is unique, with custom patterned wallpaper, colored accent walls, and locally inspired carpet designs.

Restored historic building at 19 Clifford Street

19 Clifford Street is a restored historic eight-story building situated in Detroit's Merchant Row—a central, pedestrian-friendly destination at the heart of downtown's renaissance. WeWork's flexible workspace within the property spans seven floors and features a mix of sleek private offices, art-filled lounges, spacious meeting rooms, and community pantries. With a contemporary design that draws on mid-century influences, WeWork's offering reflects Detroit's rich cultural history while also celebrating the city's new, reanimated identity.



Private phone booths with bright yellow accordion doors offer quiet spaces for calls and solo work.



Rich leather couches with colorful patterned throw pillows give lounges the feel of a cozy home study.

Classic meets contemporary in this polished downtown space

19 Clifford Street draws on Detroit's creativity and vibrance, pairing unexpectedly whimsical design moments with traditional accents and silhouettes. The result is a colorful, artistic workspace with the same buzzing energy of the city itself.

- Graphic art and patterned wallpaper lend a lively local character to social spaces and common areas
- Each meeting room has its own unique design style, with custom wallpaper, patterned tile carpets, and colored accent walls
- Oak parquet flooring and floor-to-ceiling wainscoting add classic refinement and historic charm



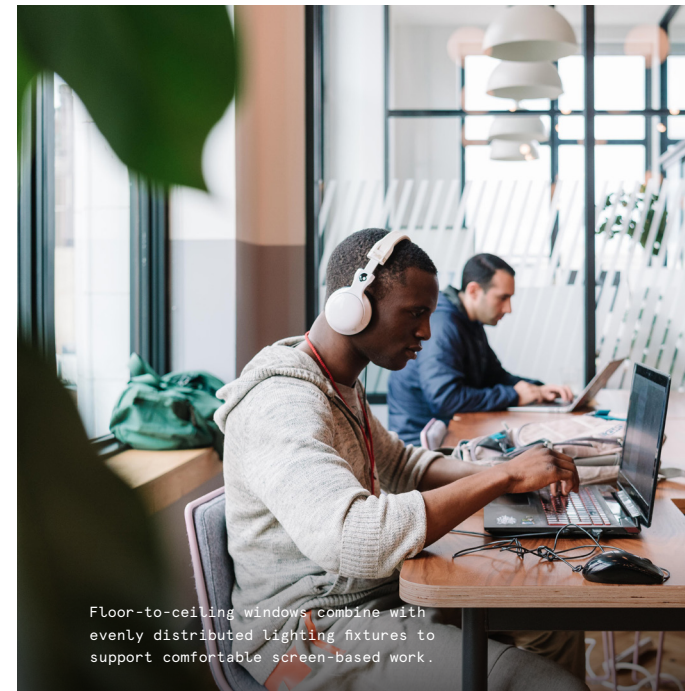
A mix of gem-toned accents, bold patterns, and rich textures adds a modern twist to this parquet-clad lounge.



Irreverent accents made by local artists lend eclectic personality to lounges and common areas.



A mix of gem-toned accents, bold patterns, and rich textures adds a modern twist to this parquet-clad lounge.



Floor-to-ceiling windows combine with evenly distributed lighting fixtures to support comfortable screen-based work.



Custom wallpaper with bold, unexpected patterns dots the workspace's common areas.

On-site amenities

- Electronic keycard access
- Business-class printers
- Professional events and programming
- Stocked pantry



A café-inspired pantry features bold blue tiling, barstool seating, and sleek pendant lighting.

- US mail drop
- On-site staff
- Meeting rooms
- Mother's room
- Phone booths
- Event space
- Dog-friendly spaces

Building specifications



Hours of operation

Monday - Friday: 8am-5pm



Security

Electronic keycard access
Intercom control



Fire strategy

Fully-sprinklered floors



Building history

Built in 1914
Designed by Mason & Rice
Developed by Albert Kahn



Elevators

2 passenger elevators
with a capacity of 2,000 lbs
1 freight elevator
with a capacity of 3,500 lbs



Building size

8 stories
54,000 SF




HVAC

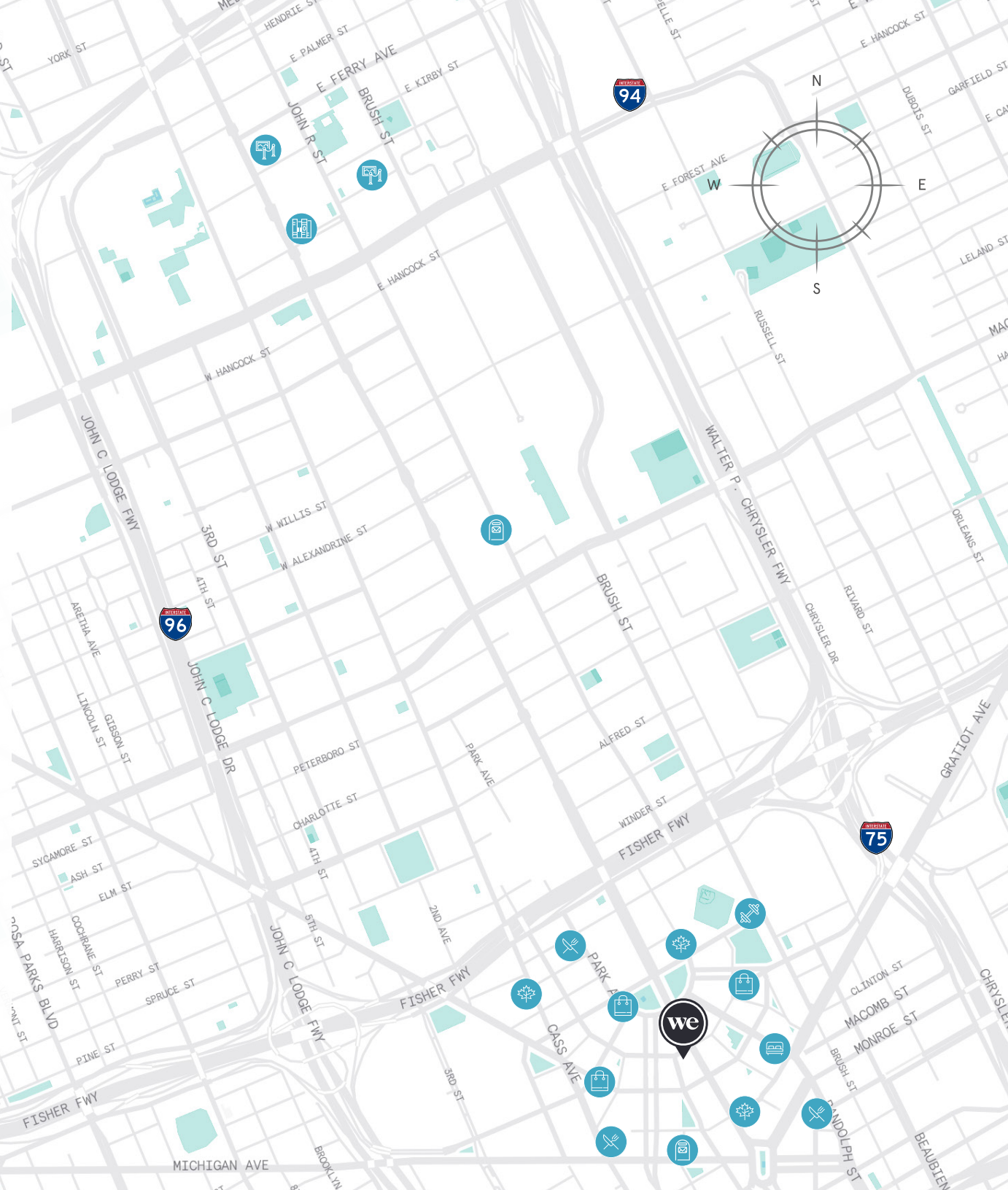
Monday - Friday: 8am-7pm
Saturday: 9am-1pm

An urban oasis in Merchant Row

Once known as Motor City for its thriving automobile industry, Detroit has taken on a new identity in the 21st century: Renaissance City. Businesses and start-ups are flocking to the city for its vibrant community of innovators, fast-growing food scene, and historic urban spaces. Members of 19 Clifford Street can enjoy it all, with easy access to Ford Field and Comerica Park, the Detroit Public Library, and local favorite eateries like La Pecora Nera, Sy Thai, and Avalon Bakery. Plus, with plenty of local parking and several nearby transportation hubs, commuting is also quick and efficient, thanks to ample local parking and several nearby transportation hubs.

Distance to WeWork

Woodward + Gratiot Bus Stop	 Walk	3 min
Opera House Parking	 Walk	4 min
The Z Lot	 Walk	5 min
Rosa Parks Transit Center	 Walk	6 min
Detroit Amtrak Station	 Drive	9 min
Detroit Metropolitan Airport (DTW)	 Drive	20 min



2nd Floor

5,521 RSF

2

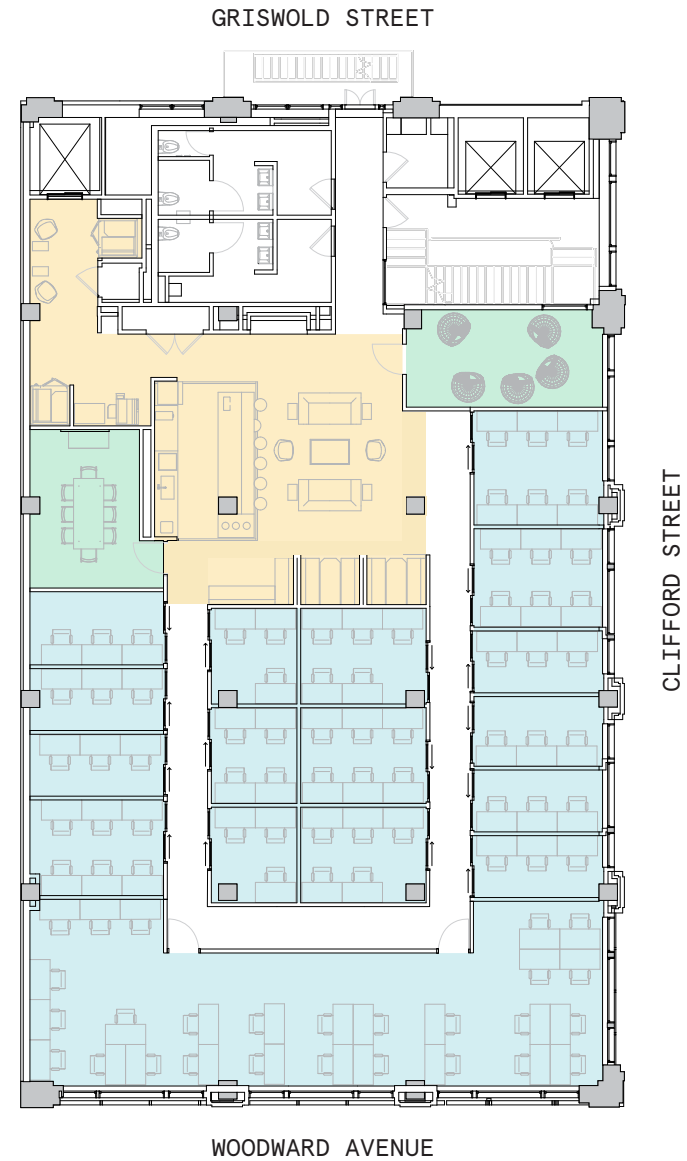
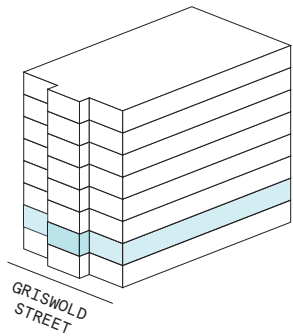
MEETING ROOM(S)

4

SHARED WORKSPACE(S)

LEGEND

- MEETING ROOM
- SHARED WORKSPACE
- DEDICATED SPACE



2nd Floor

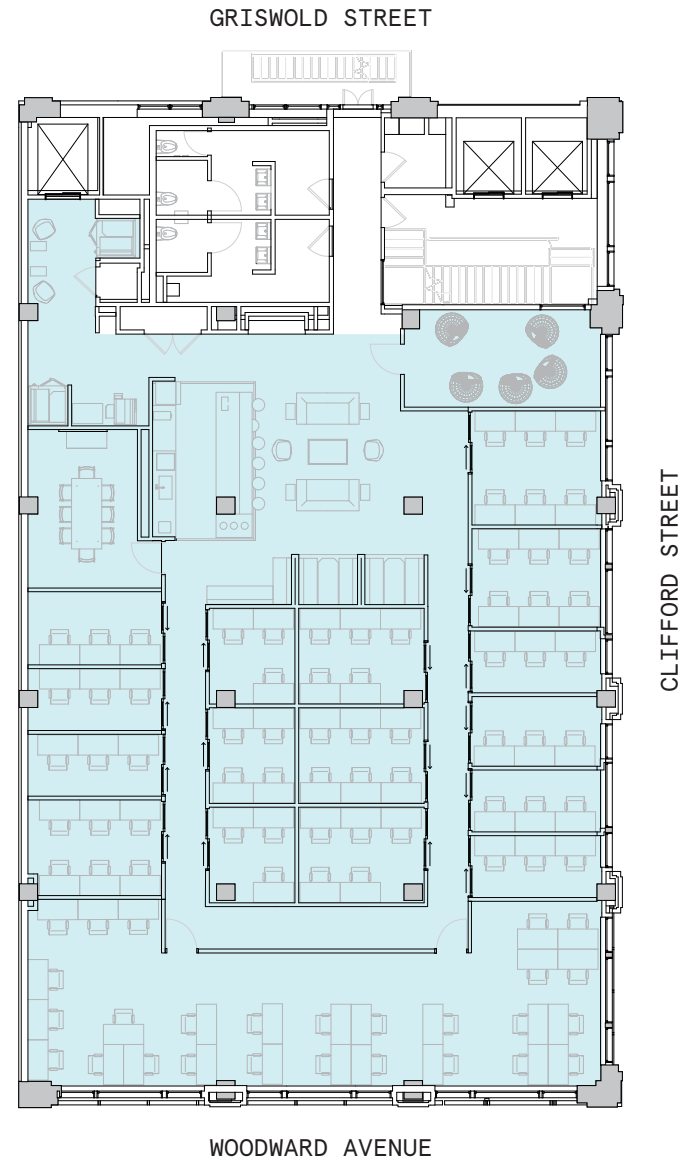
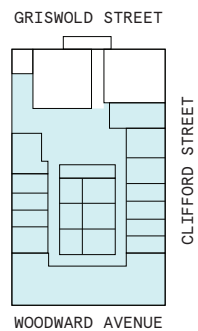
5,521 RSF

5,521 RSF Suite 02-100

2
MEETING ROOM(S)

LEGEND

 DEDICATED SPACE



3rd Floor

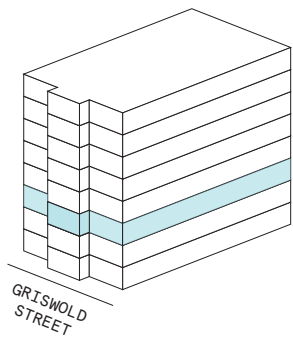
5,757 RSF

2
MEETING ROOM(S)

2
SHARED WORKSPACE(S)

LEGEND

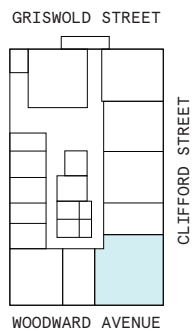
- MEETING ROOM
- SHARED WORKSPACE
- DEDICATED SPACE



3rd Floor

5,757 RSF

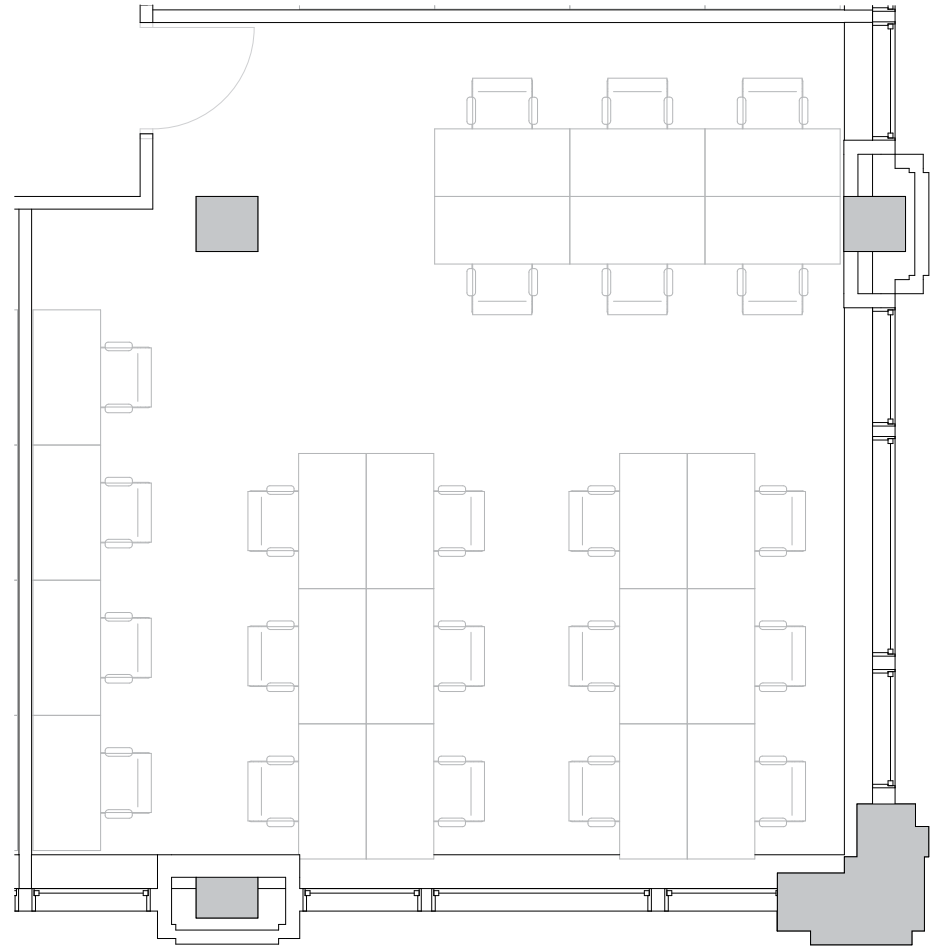
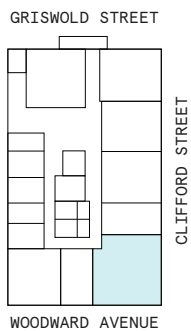
1,175 RSF Suite 03-108



Suite 03-108

3rd Floor

1,175 RSF
RENTABLE AREA



4th Floor

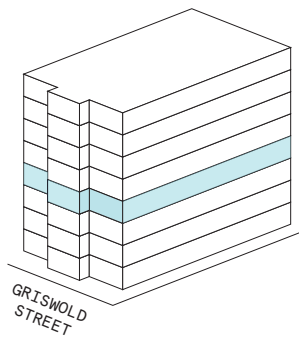
5,748 RSF

1
MEETING ROOM(S)

1
SHARED WORKSPACE(S)

LEGEND

- MEETING ROOM
- SHARED WORKSPACE
- DEDICATED SPACE



5th Floor

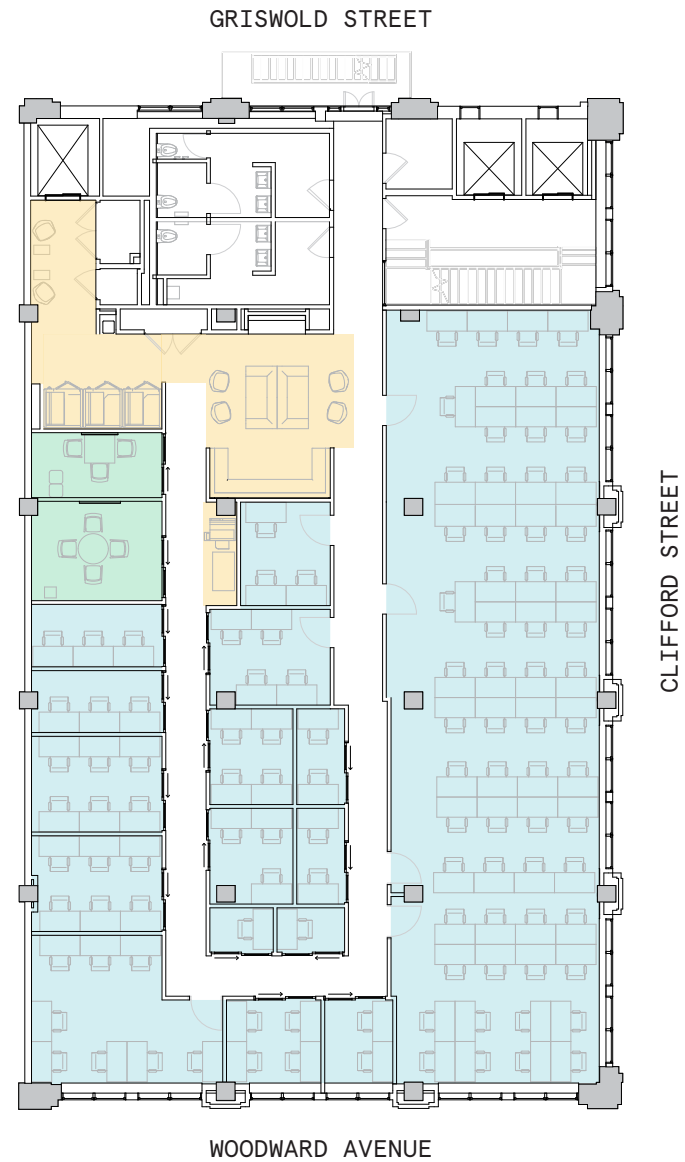
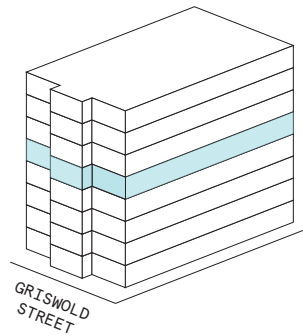
5,760 RSF

2
MEETING ROOM(S)

3
SHARED WORKSPACE(S)

LEGEND

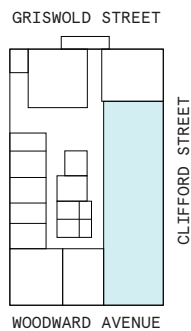
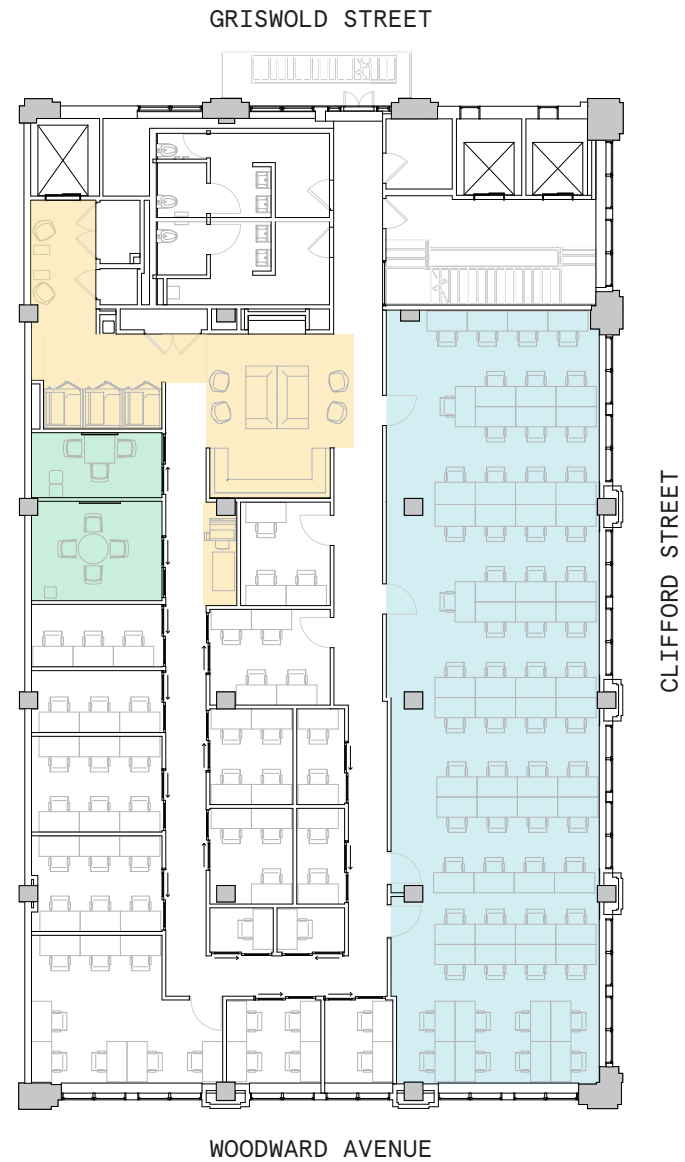
- MEETING ROOM
- SHARED WORKSPACE
- DEDICATED SPACE



5th Floor

5,760 RSF

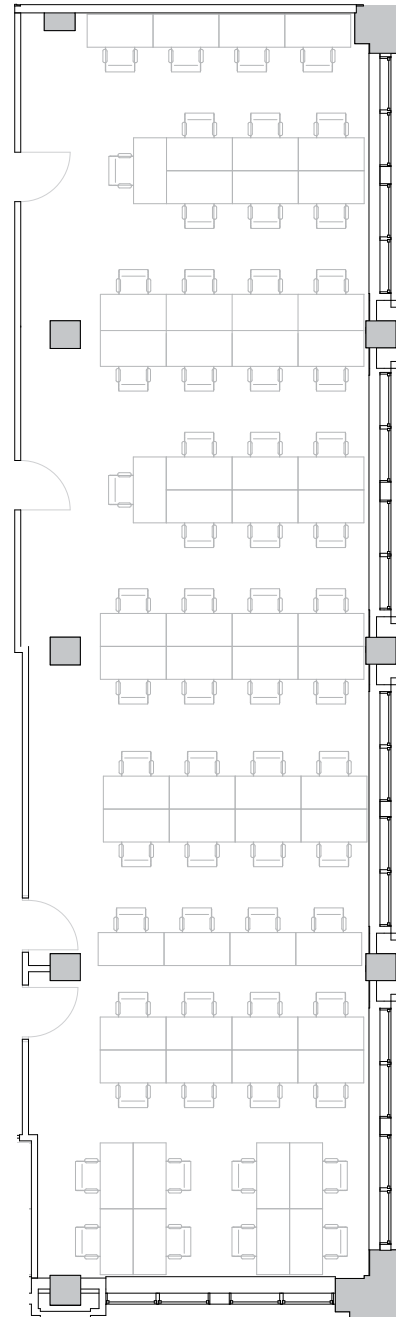
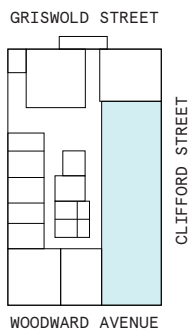
3,149 RSF Suite 05-101



Suite 05-101

5th Floor

3,149 RSF
RENTABLE AREA



6th Floor

5,264 RSF




2

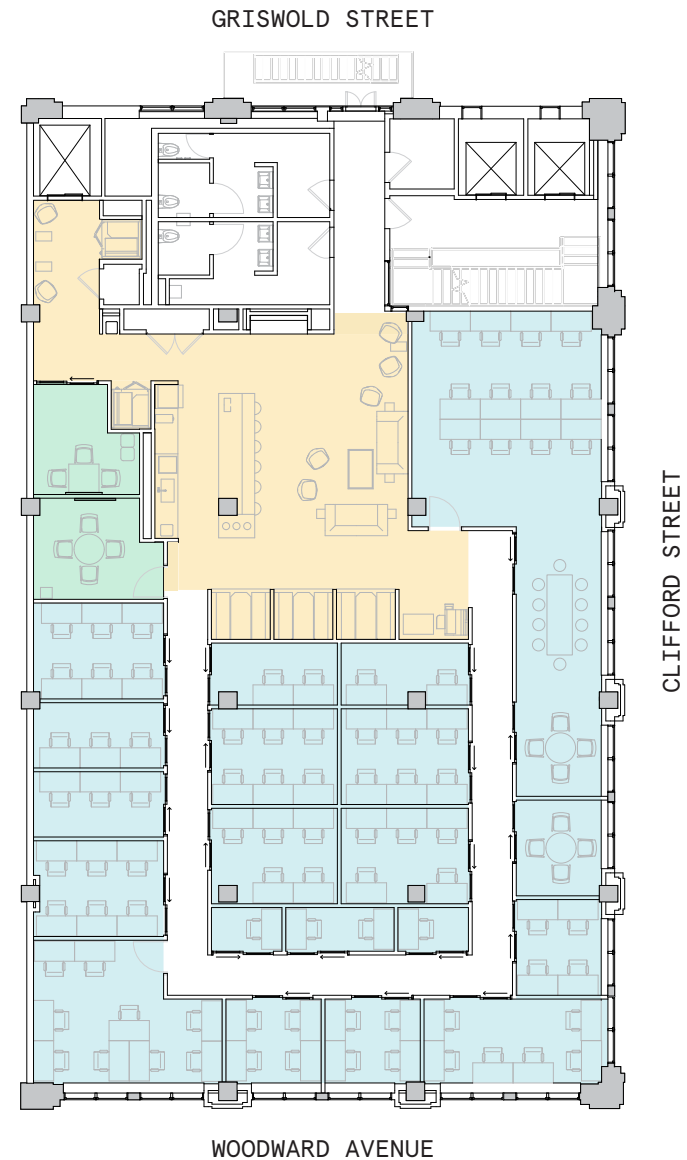
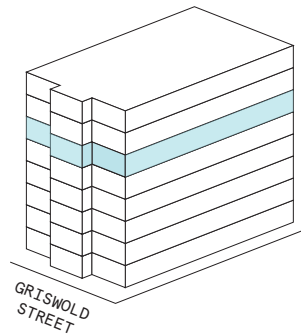
MEETING ROOM(S)

1

SHARED WORKSPACE(S)

LEGEND

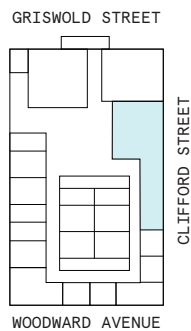
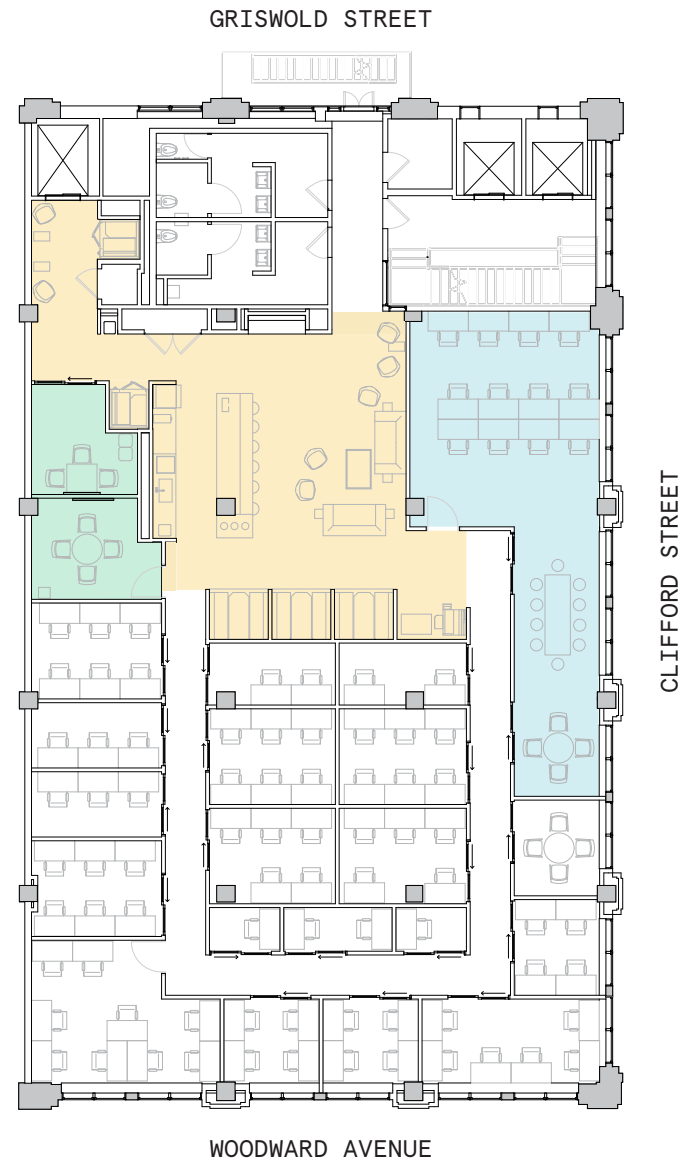
-  MEETING ROOM
-  SHARED WORKSPACE
-  DEDICATED SPACE



6th Floor

5,264 RSF

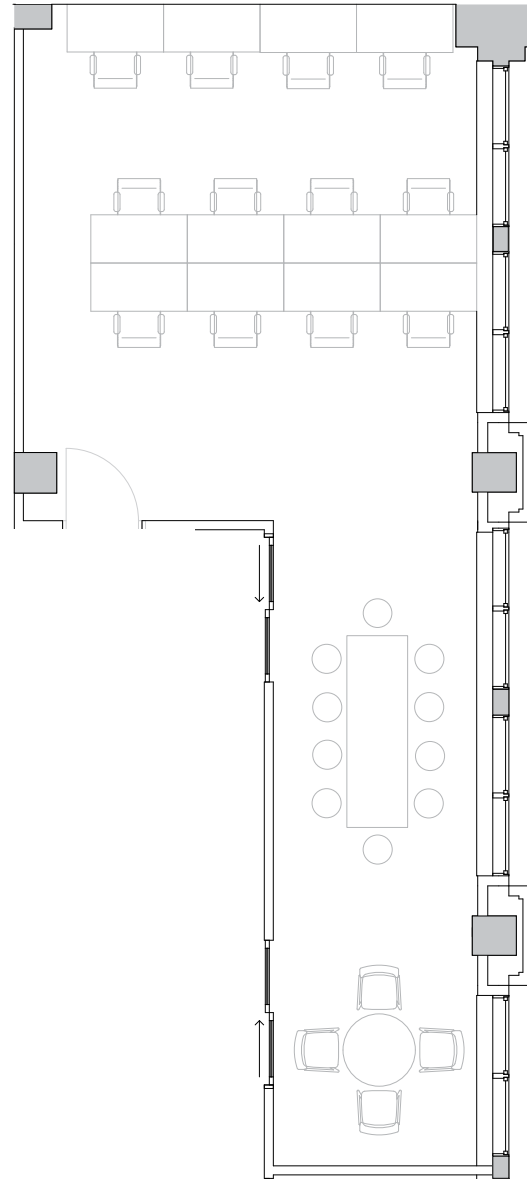
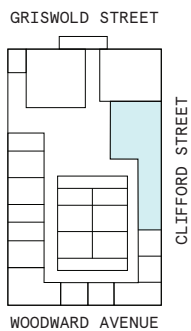
1,468 RSF Suite 06-101



Suite 06-101

6th Floor

1,468 RSF
RENTABLE AREA



7th Floor

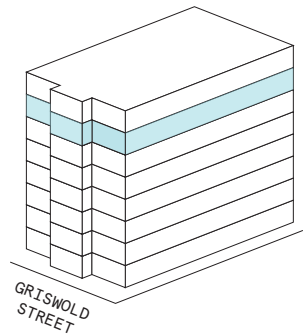
5,534 RSF

3
MEETING ROOM(S)

4
SHARED WORKSPACE(S)

LEGEND

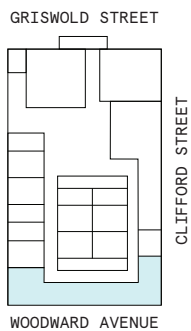
- MEETING ROOM
- SHARED WORKSPACE
- DEDICATED SPACE



7th Floor

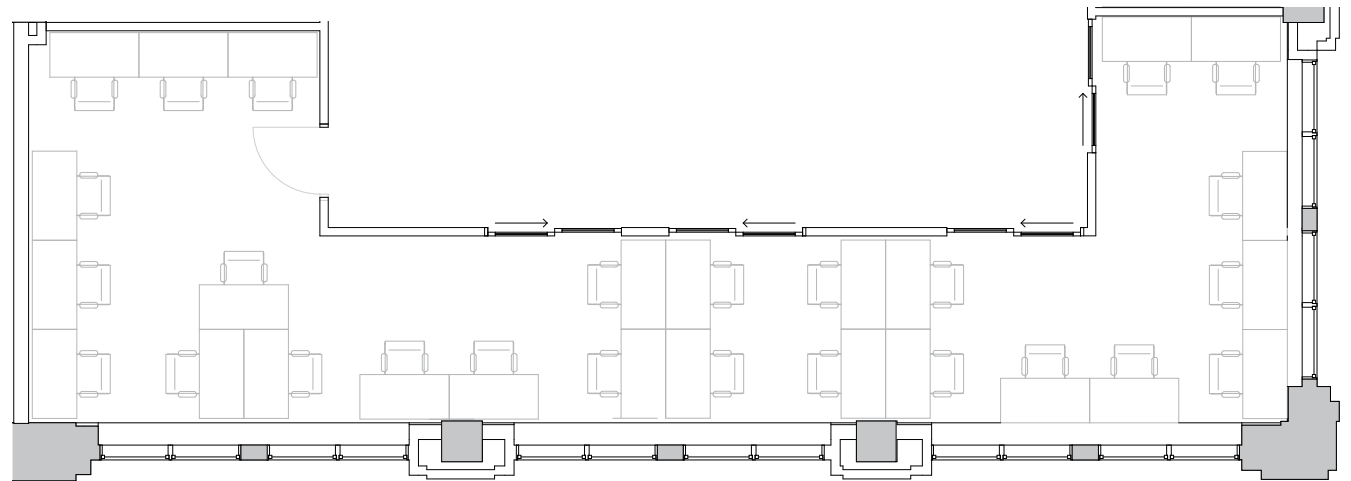
5,534 RSF

1,739 RSF Suite 07-124

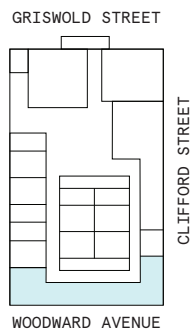


Suite 07-124

7th Floor



1,468 RSF
RENTABLE AREA



8th Floor

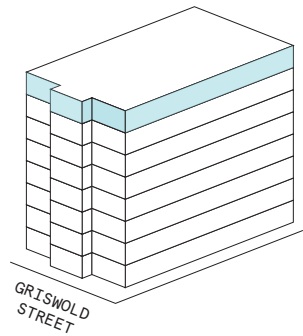
4,440 RSF

3
MEETING ROOM(S)

5
SHARED WORKSPACE(S)

LEGEND

- MEETING ROOM
- SHARED WORKSPACE
- DEDICATED SPACE

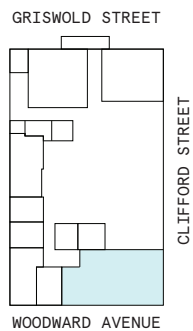


8th Floor

4,440 RSF

1,938 RSF Suite 08-101

2
PRIVATE OFFICE(S)



Suite 08-101

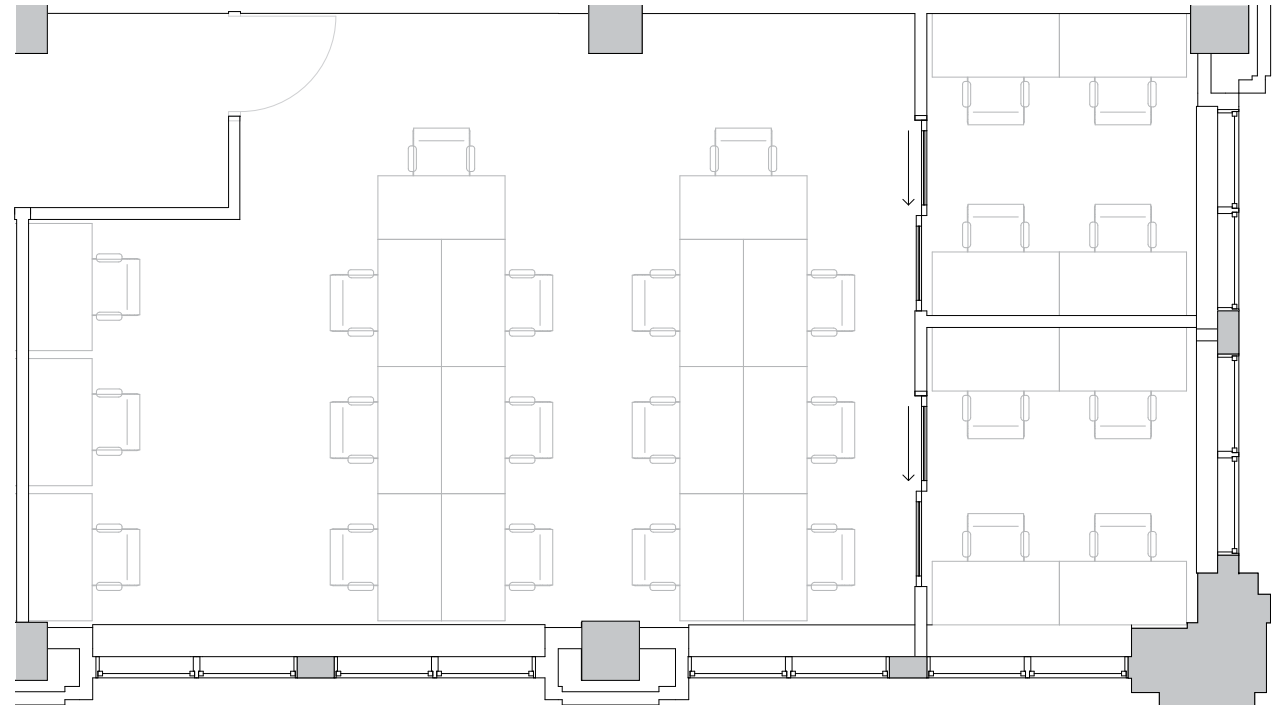
8th Floor

2

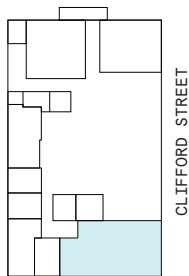
PRIVATE OFFICE(S)

1,938 RSF

RENTABLE AREA



GRISWOLD STREET



WOODWARD AVENUE

Contact

For leasing inquiries please reach out to our team.



Kali Cardoza

PORTFOLIO DIRECTOR
KALI.CARDOZA@WEWORK.COM

Mitch King

SENIOR LEASING DIRECTOR
MITCH.KING@WEWORK.COM
860.304.9304

Eddie Theut

SENIOR LEASING MANAGER
EDDIE.THEUT@WEWORK.COM

© 2022 WeWork. The WeWork trademark and related logos are the property of WeWork Companies LLC. Any reference to third-party names are for reference and informational purposes only and should not be considered an endorsement or association of WeWork or vice versa. Photographs contained herein may be representative examples of various WeWork locations and do not necessarily depict the WeWork location referenced. While reasonable efforts have been made to check the accuracy of the information contained here, WeWork, its officers, employees, directors, and representatives, make no warranty, express or implied, regarding the accuracy of the information and disclaim any liability arising from the use of the information contained herein. All dimensions are approximate and subject to variances. It is your obligation to independently verify the particulars of the property. WeWork reserves the right to make changes.