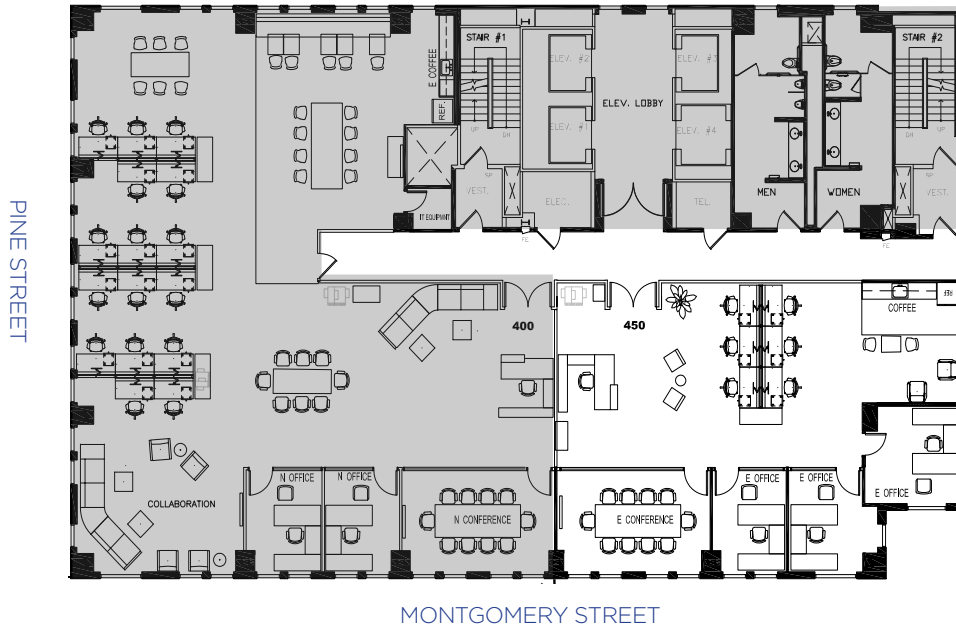


250 MONTGOMERY STREET

Suite: 450



Floor Information

[Click Here for Additional Photos](#)

- 2,434 RSF
- Available August 2026
- Creative ceilings
- Can be fully furnished
- 3 private offices
- 1 Conference room

CONTACT

Matthew D. Shewey
Senior Managing Director
+1 415 395 7255
matt.shewey@jll.com
RE License # 01445125

Charlie Hanafin
Senior Vice President
+1 415 395 4951
charlie.hanafin@jll.com
RE License # 01996121

Lexi Castellino
Associate
+1 650 400 8344
lexi.castellino@jll.com
RE License # 02221002

