

# SYLVERTREE POMPANO

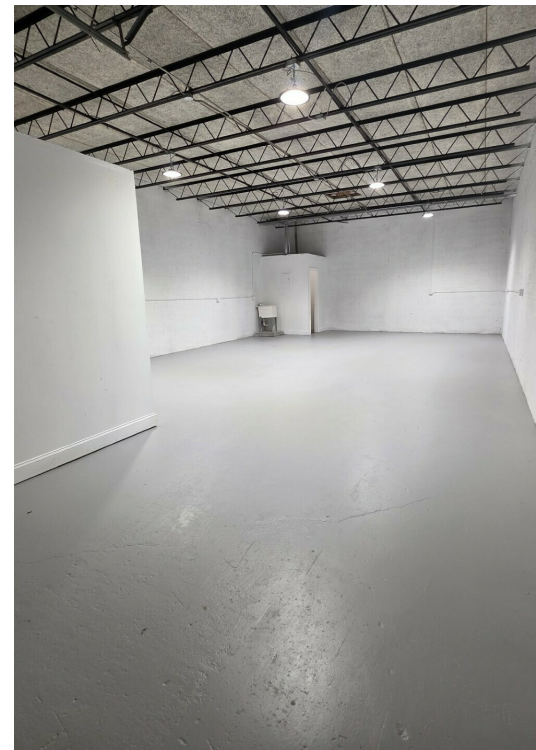
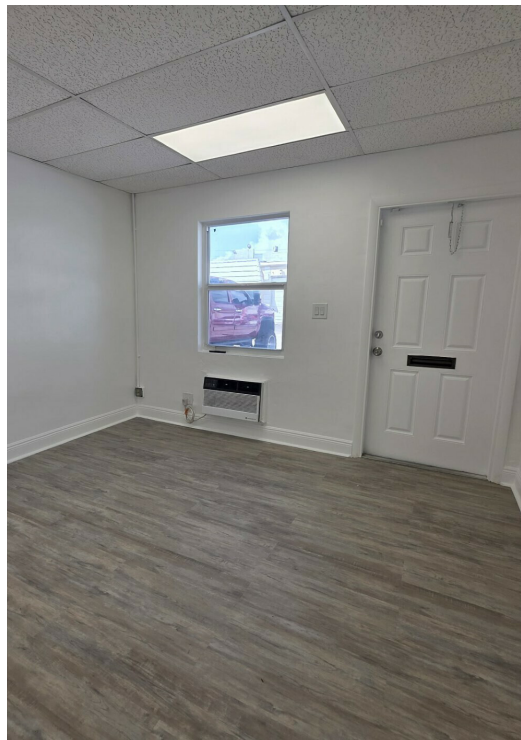
1411, 1421, 1451-1461 SW 12TH AVE, POMPANO BEACH, FL 33069

1451-C SW 12TH AVE



## SPACE HIGHLIGHTS

- 1,180 SF
- Newly Renovated
- 163 SF air-conditioned office
- 10' x 10' front grade level overhead door
- New LVT flooring, LED lighting and freshly painted
- Private restroom
- 11'5" clear ceiling in warehouse



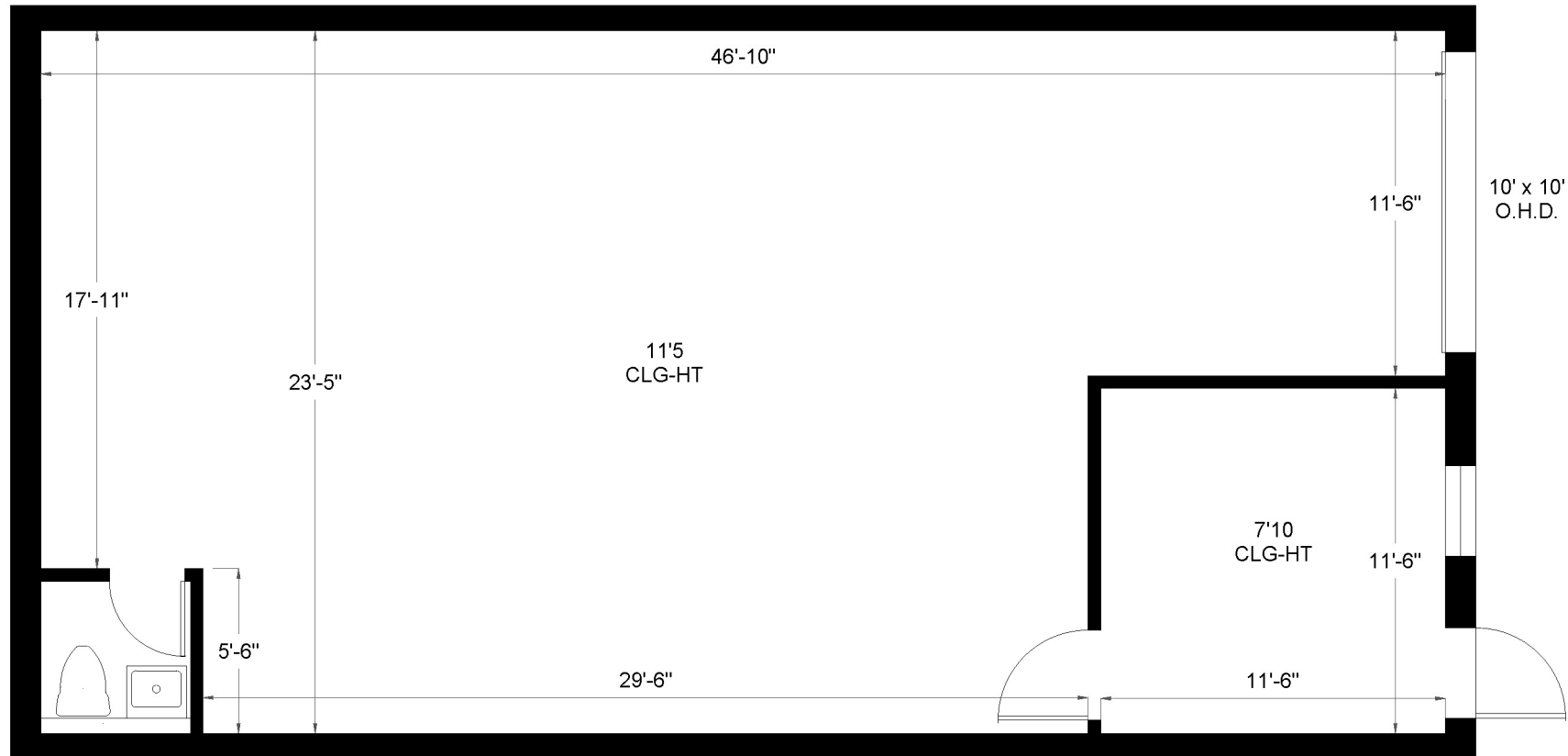
## NATALIE DELISLE

Property Manager / Sales Associate  
561.643.7063  
natalie@levyrai.com



# SYLVER TREE HOLDINGS, LLC

1451 SW 12th Avenue, Unit C | Pompano Beach, FL 33060



Office - 163 Sq. Ft.  
Warehouse - 1,017 Sq. Ft.

1,180 Rentable Sq. Ft.  
[www.LevyRealtyAdvisors.com](http://www.LevyRealtyAdvisors.com)