

6640 S Tenaya Way

Suites 100, 110, 120, 130, 140, 150
Las Vegas, NV 89113

Industrial for Lease

8,952 SF



Leasing Information: 702.221.8226

Ali Roesener, SIOR
NRE:S.0172338
Senior Vice President
(702) 765-8894
Ali.Roesener@lpc.com

Tony Alvarez
NRE:S.0200369
Associate
(702) 765-8880
Tony.Alvarez@lpc.com

Lincoln

4755 Dean Martin Drive
Las Vegas, NV 89013

www.lpc.com

6640 S Tenaya Way

Suites 100, 110, 120, 130, 140, 150 | Las Vegas, NV
89113

Industrial for Lease

8,952 SF



Southwest Industrial Space Available

Availabilities	SF	Lease Rate	Date Available
Suites 100 - 150	8,952	\$1.46 NNN	Immediately

Ali Roesener, SIOR
(702) 765-8894
Ali.Roesener@lpc.com

Tony Alvarez
(702) 765-8880
Tony.Alvarez@lpc.com

Lincoln

6640 S Tenaya Way

Suites 100, 110 120, 130, 140, 150 | Las Vegas, NV 89113

Industrial for Lease

8,952 SF

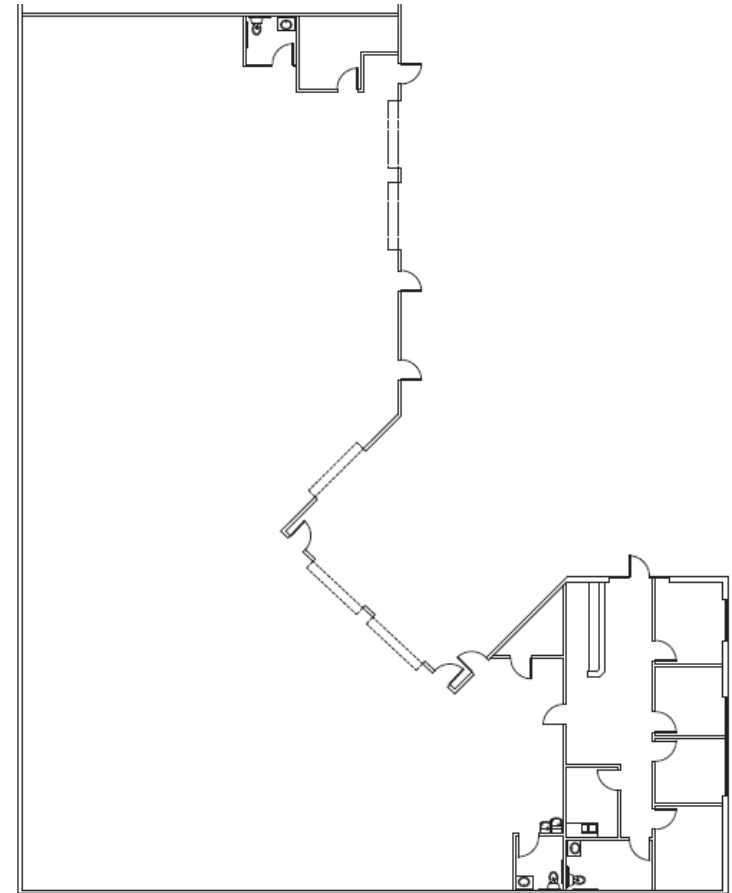
Availabilities

Suite	Total SF	Rate (NNN)	CAM	Grade Doors	Monthly Total
100 - 150	8,952	\$1.46	\$0.42	5	\$16,829.76

Property Features

- Zoning: IP
- Approximately 15% office
- Located in the Southwest
- I-215 Freeway Easy Access
- Fire sprinklers
- 3.2:1,000 Parking Ratio

Suite Available Floor Plan



Ali Roesener, SIOR
(702) 765-8894
Ali.Roesener@lpc.com

Tony Alvarez
(702) 765-8880
Tony.Alvarez@lpc.com

Lincoln