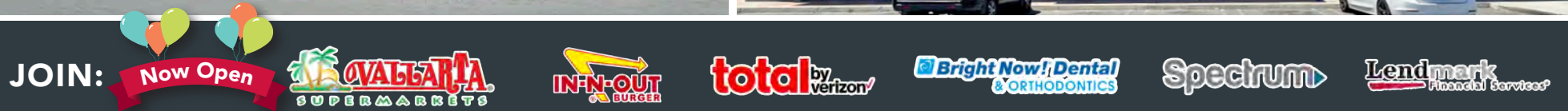
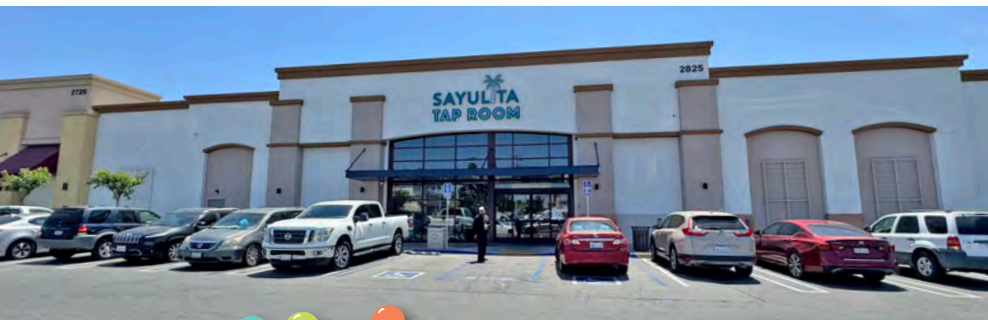


HEMET VILLAGE

SEQ FLORIDA AVE / HWY 74
& SANDERSON AVE
HEMET, CA

UP TO ±20,001 SF AVAILABLE
FOR LEASE



PROPERTY HIGHLIGHTS

- ±20,001 SF Anchor Space divisible to ±10,000 SF
- Excellent Co-Tenancy Offering Regional & Neighborhood Drawing Power
- Prominent Location With Tremendous Florida Avenue Exposure
- Ideal location for Electronics, Sporting Goods, Gym, Apparel, Shoes, Furniture, Dollar / Discount Stores and many other retail uses
- Highly Visible Pylon Signage
- Excellent Traffic Counts With Approximately 40,000 Cars Per Day At Intersection

DEMOGRAPHICS	1 MILE	3 MILES	5 MILES
2025 Population:	13,298	94,001	167,546
Daytime Population:	11,051	56,263	88,956
Avg. Household Income:	\$73,075	\$81,481	\$87,101

Source: Regis Online

TRAFFIC COUNTS

62,779 CPD

At Florida Ave. & Sanderson Ave.
Source: Regis Online

BRIAN BIELATOWICZ
951.445.4515
bbielatowicz@leetemecula.com
DRE #01269887

TED RIVENBARK
951.445.4512
trivenbark@leetemecula.com
DRE #01247098



No warranty or representation has been made to the accuracy of the foregoing information. Terms of sale or lease and availability are subject to change or withdrawal without notice. Lee & Associates Commercial Real Estate Services, Inc. - Riverside. 25240 Hancock Avenue, Suite 100 - Murrieta, CA 92562 | Corporate ID# 01048055



BRIAN BIELATOWICZ

951.445.4515

bbielatowicz@leetemecula.com

DRE #01269887

TED RIVENBARK

951.445.4512

trivenbark@leetemecula.com

DRE #01247098



No warranty or representation has been made to the accuracy of the foregoing information. Terms of sale or lease and availability are subject to change or withdrawal without notice. Lee & Associates Commercial Real Estate Services, Inc. - Riverside. 25240 Hancock Avenue, Suite 100 - Murrieta, CA 92562 | Corporate ID# 01048055