

S&R CENTER

4323 Kenilworth Ave, Bladensburg, MD 20710
Prince George's County



1,070 SF AVAILABLE

NEARBY ATTRACTIONS

GO KART TRACK



2ND AVENUE



AutoZone

Public Storage

ENDCAP AVAILABLE FOR LEASE

- 1,070 SF space with excellent visibility to Kenilworth Ave (23,265 ADT)
- Former law office
- Large free-standing pylon signage available
- Highly trafficked corridor with dense residential and daytime demographics
 - 142,141 residents within a 10-minute drive time
 - 54,655 daytime employees within a 10-minute drive time

LEASED BY:

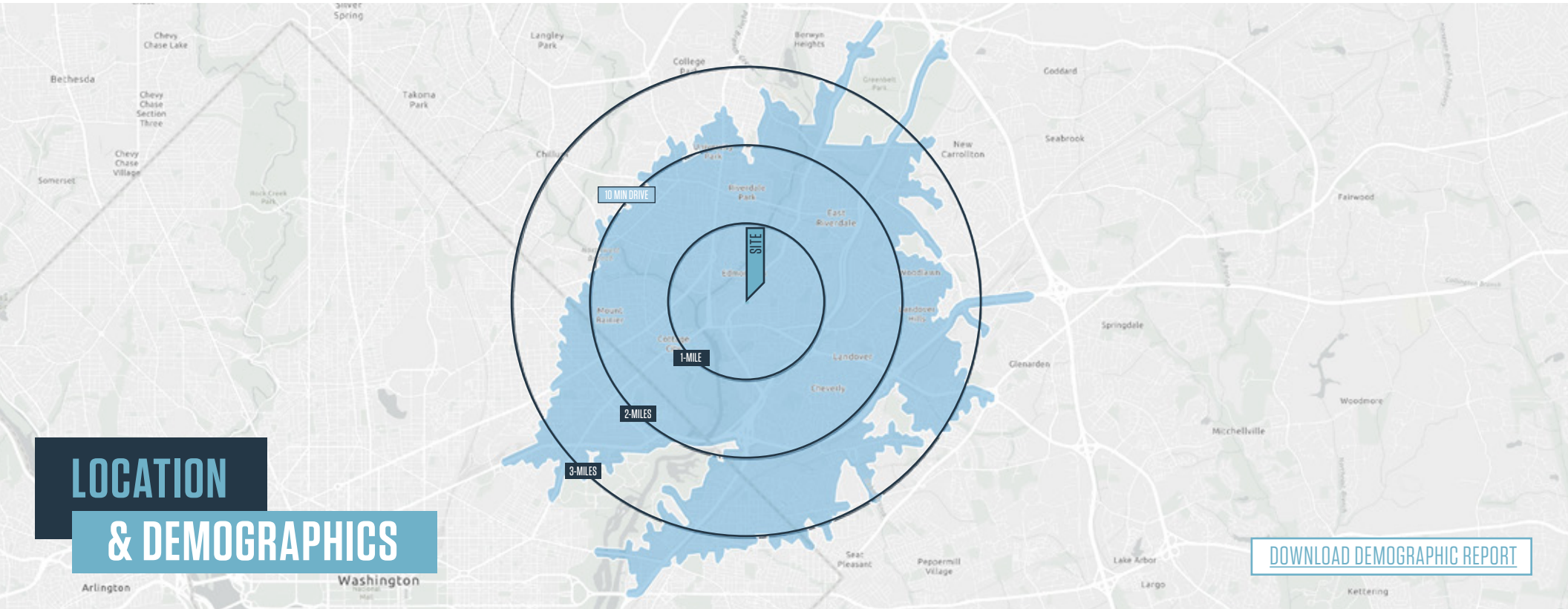
klnb

Ryan Schmitz
rschmitz@klnb.com
202-602-1743

Matt Skalet
mskalet@klnb.com
202-420-7775

S&R CENTER

4323 Kenilworth Ave, Bladensburg, MD 20710
Prince George's County



LOCATION & DEMOGRAPHICS

[DOWNLOAD DEMOGRAPHIC REPORT](#)

TRAFFIC COUNTS | 2023

Kenilworth Ave	23,265 ADT
Edmonston Rd	5,277 ADT
Annapolis Rd	35,399 ADT

	1-MILE	2-MILES	3-MILES	10-MIN DRIVE	1-MILE	2-MILES	3-MILES	10-MIN DRIVE	
Population	24,280	85,718	184,209	142,141	Households	7,727	28,885	62,359	49,646
Daytime Population	8,214	28,017	84,405	54,655	Average Household Income	\$95,236	\$118,177	\$111,543	\$110,902

Ryan Schmitz
rschmitz@klnb.com
202-602-1743

Matt Skalet
mskalet@klnb.com
202-420-7775

1130 Connecticut Ave, NW, Suite 600
Washington, DC 20036
klnb.com



S&R CENTER

4323 Kenilworth Ave, Bladensburg, MD 20710
Prince George's County

MARKET AERIAL



Ryan Schmitz
rschmitz@klnb.com
202-602-1743

Matt Skalet
mskalet@klnb.com
202-420-7775

1130 Connecticut Ave, NW, Suite 600
Washington, DC 20036
klnb.com

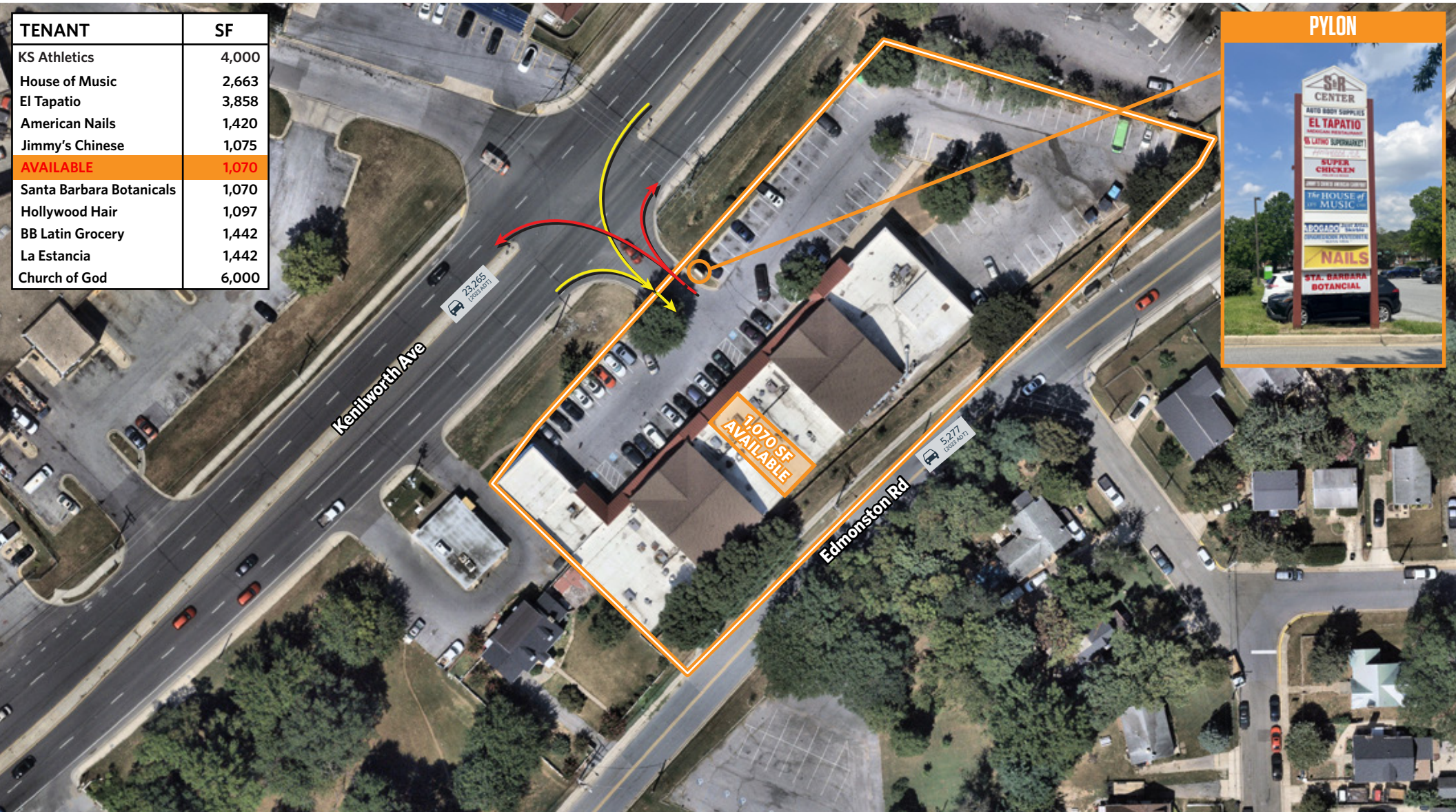


S&R CENTER

4323 Kenilworth Ave, Bladensburg, MD 20710
Prince George's County

CLOSE-UP AERIAL

TENANT	SF
KS Athletics	4,000
House of Music	2,663
El Tapatio	3,858
American Nails	1,420
Jimmy's Chinese	1,075
AVAILABLE	1,070
Santa Barbara Botanicals	1,070
Hollywood Hair	1,097
BB Latin Grocery	1,442
La Estancia	1,442
Church of God	6,000



Ryan Schmitz
rschmitz@klnb.com
202-602-1743

Matt Skalet
mskalet@klnb.com
202-420-7775

1130 Connecticut Ave, NW, Suite 600
Washington, DC 20036
klnb.com



S&R CENTER

4323 Kenilworth Ave, Bladensburg, MD 20710
Prince George's County

PHOTOS



Ryan Schmitz
rschmitz@klnb.com
202-602-1743

Matt Skalet
mskalet@klnb.com
202-420-7775

1130 Connecticut Ave, NW, Suite 600
Washington, DC 20036
klnb.com

klnb

S&R CENTER

4323 Kenilworth Ave, Bladensburg, MD 20710

Prince George's County

[CLICK TO VIEW PROPERTY WEBSITE](#)

For More Information, Please Contact:

Ryan Schmitz
rschmitz@klnb.com
202-420-7769

Matt Skalet
mskalet@klnb.com
202-420-7775



While we have no reason to doubt the accuracy of any of the information supplied, we cannot, and do not, guarantee its accuracy. All information should be independently verified prior to a purchase or lease of the property. We are not responsible for errors, omissions, misuse, or misinterpretation of information contained herein and make no warranty of any kind, express or implied, with respect to the property or any other matters.

100 West Road, Suite 505
Towson, MD 21204
klnb.com

