

RUSSELL PLAZA

33600 6th Ave S | Federal Way, WA

MULTIPLE SPACES RANGING FROM
1,544 SF - 4,032 SF

**SIGNAGE
AVAILABLE**

 THE ANDOVER
COMPANY, INC.
CORFAC INTERNATIONAL

SHANE MAHVI, SIOR
(206) 336-5338
smahvi@andoverco.com

BRIAN BRUININKS, CCIM
(206) 336-5324
bbruininks@andoverco.com

FOR LEASE

RUSSELL PLAZA

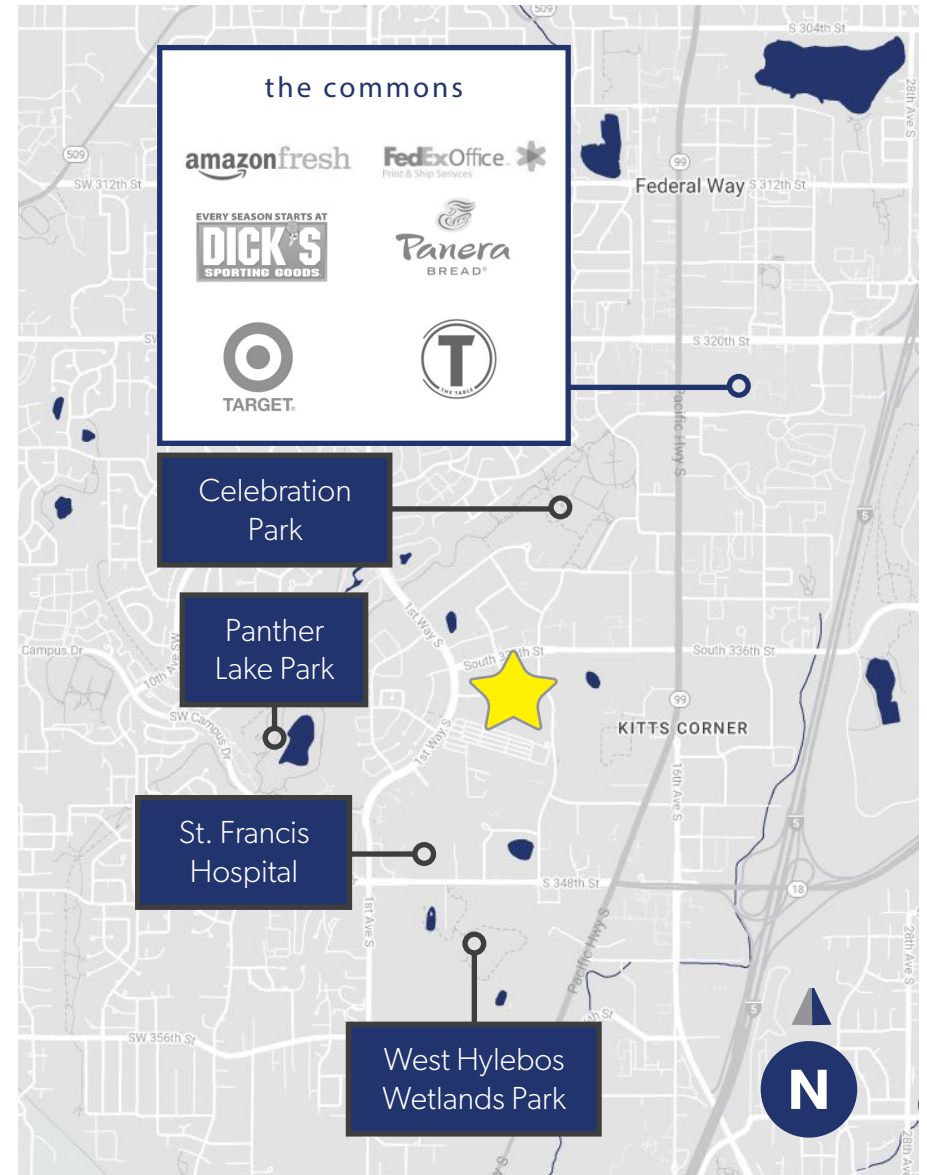
33600 6th Ave South
Federal Way, WA

PROPERTY HIGHLIGHTS

- CLASS "A" SUBURBAN OFFICE SPACE
- AMPLE FREE SURFACE PARKING
- PROJECT AMENITIES INCLUDE CONFERENCE ROOM AND FITNESS CENTER
- LOCATED ON MAIN ARTERIAL; I-5 AND HWY 99
- CLOSE PROXIMITY TO THE COMMONS SHOPPING MALL & ST. FRANCIS HOSPITAL

SPACES AVAILABLE

- SUITE 105: 4,032 SF (DIVISIBLE TO 1,544 \$ 2,448 SF)
- SUITE 200: 3,697 SF



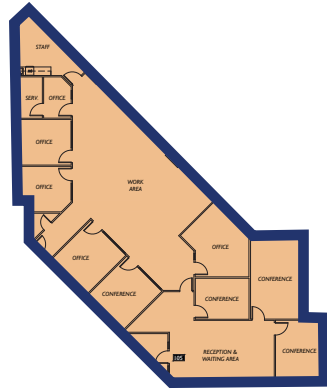
The information contained herein has been obtained from reliable sources, but is not guaranteed. A prospective buyer/tenant should verify each item relating to this property and all information contained herein.

SHANE MAHVI, SIOR
(206) 336-5338
smahvi@andoverco.com

BRIAN BRUININKS, CCIM
(206) 336-5324
bbreininks@andoverco.com



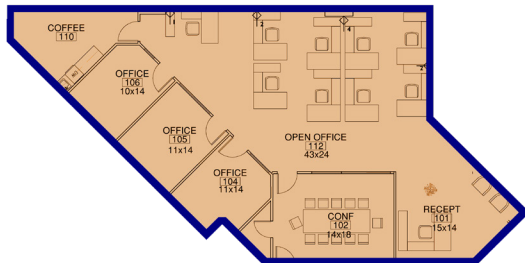
SUITE 105 | 4,032 SF TOTAL



SUITE 200 | 3,697 SF TOTAL

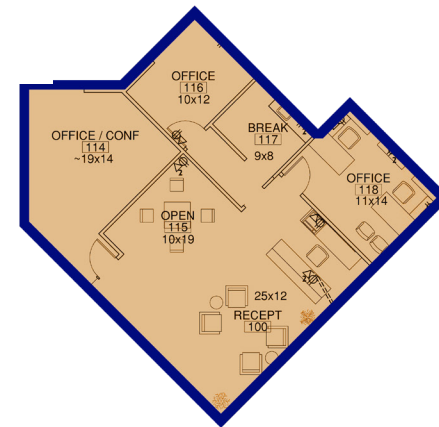


SUITE 105 (DIVISIBLE) | 2,488 SF



SHANE MAHVI, SIOR
(206) 336-5338
smahvi@andoverco.com

SUITE 105 (DIVISIBLE) | 1,544 SF



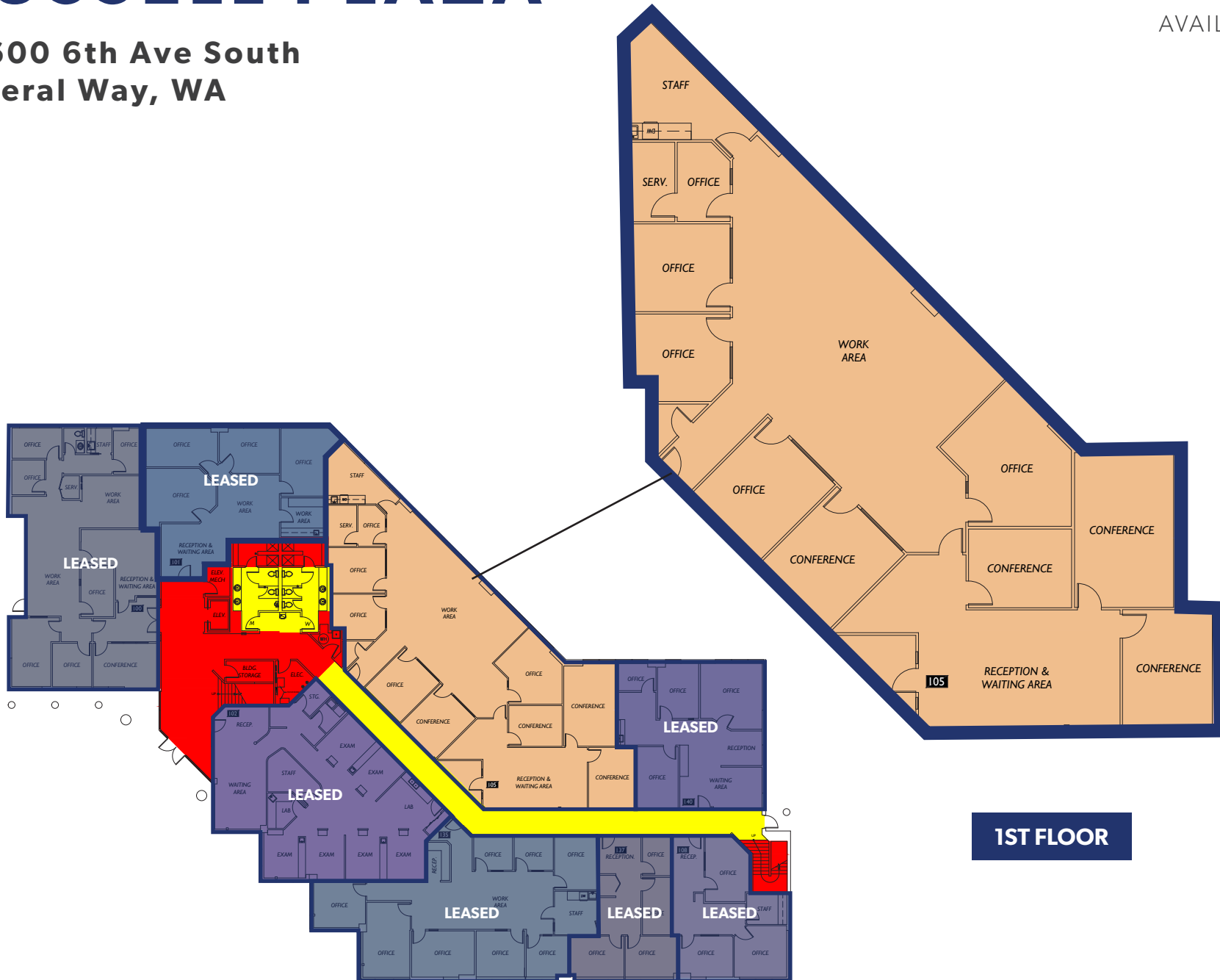
BRIAN BRUININKS, CCIM
(206) 336-5324
bbruininks@andoverco.com

RUSSELL PLAZA

33600 6th Ave South
Federal Way, WA

SUITE 105 | 4,032 SF TOTAL

AVAILABLE NOW

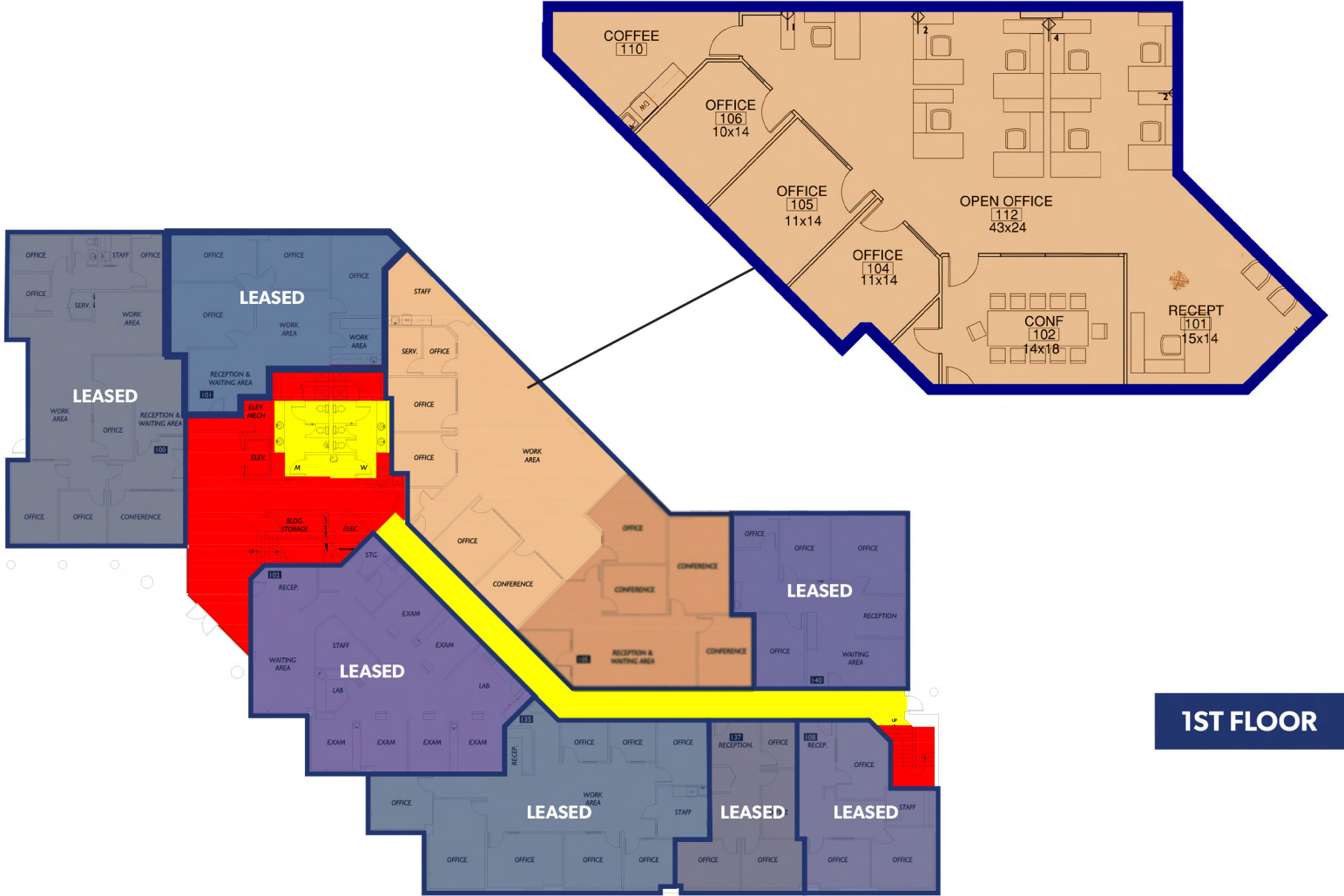


RUSSELL PLAZA

SUITE 105 (DIVISIBLE) | 2,488 SF TOTAL

33600 6th Ave South
Federal Way, WA

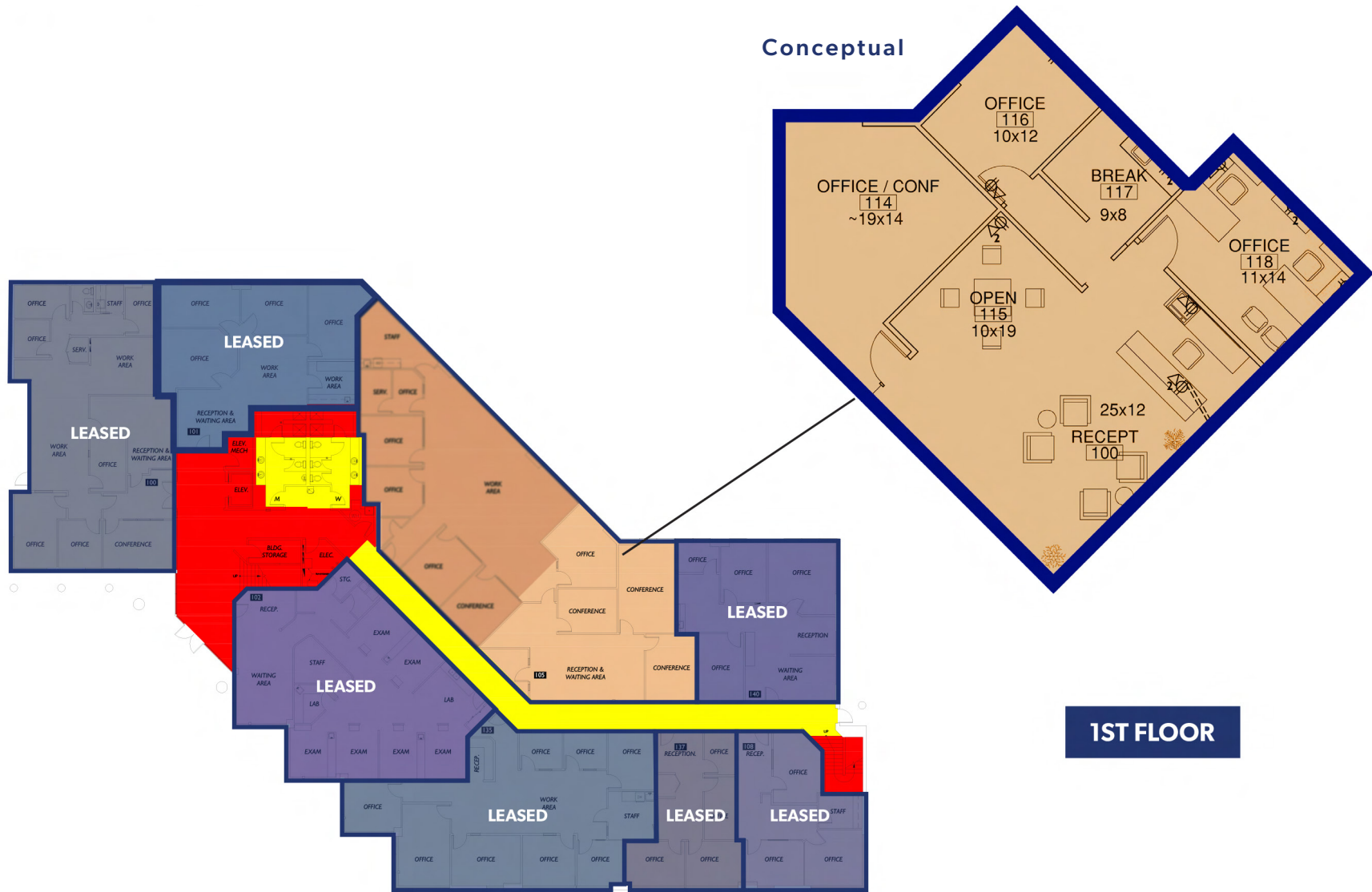
Conceptual



RUSSELL PLAZA

SUITE 105 (DIVISIBLE) | 1,544 SF TOTAL

33600 6th Ave South
Federal Way, WA

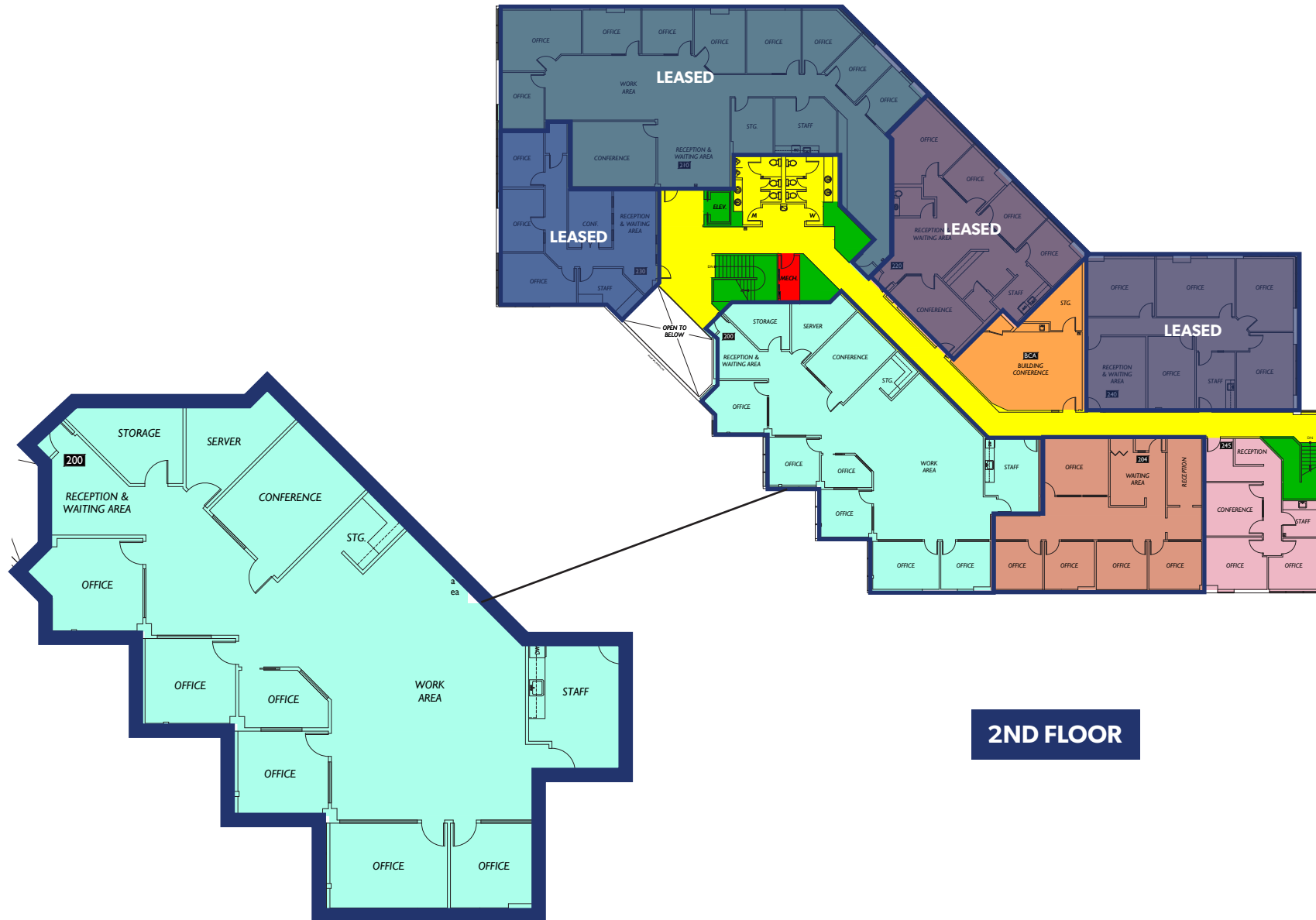


RUSSELL PLAZA

SUITE 200 | 3,697 SF TOTAL

AVAILABLE NOW

33600 6th Ave South
Federal Way, WA



2ND FLOOR

PHOTOS



The information contained herein has been obtained from reliable sources, but is not guaranteed. A prospective buyer/tenant should verify each item relating to this property and all information contained herein.

SHANE MAHVI, SIOR
(206) 336-5338
smahvi@andoverco.com

BRIAN BRUININKS, CCIM
(206) 336-5324
bbruininks@andoverco.com

