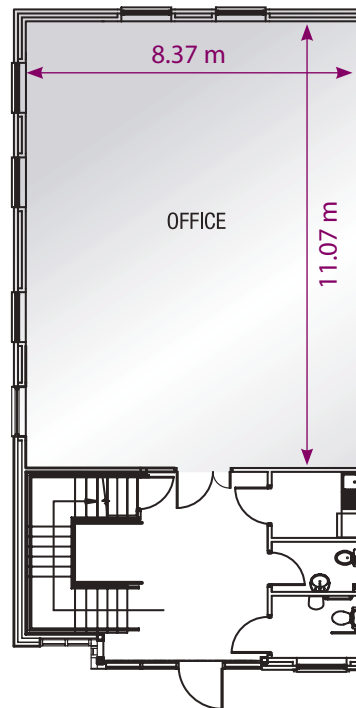


2,250 sq ft

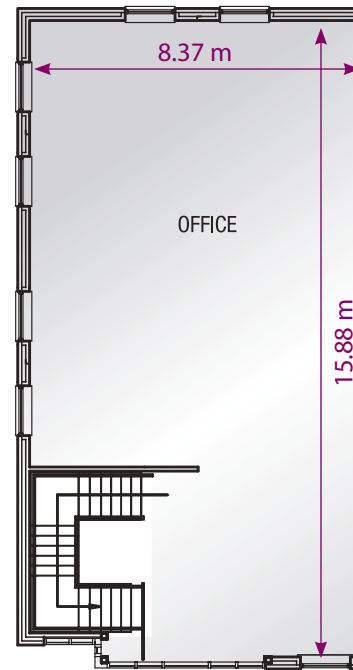
Unit 7 | Hurricane Court | Liverpool International Business Park

Unit	Sq ft	Sq m	Car Spaces	Rent (pa)	Purchase		
7 (G2K)	2,250	209.03	9	£24,750	£236,250		



Ground Floor

1,035 SQ FT (96.15 SQ M)



First Floor

1,215 SQ FT (112.88 SQ M)

