

FOR SALE

FORMER BRACKENRIDGE HEIGHTS COUNTRY CLUB

1300 LANE AVENUE, NATRONA HEIGHTS, PA 15065



FORMER GOLF CLUB • 86 ACRES • SPECTACULAR VIEWS

LORI MORAN

lmoran@ballymoneyrealestate.com

600 Grant Street
44th Floor
Pittsburgh, PA 15219
direct (412) 566.1993

BALLYMONEY

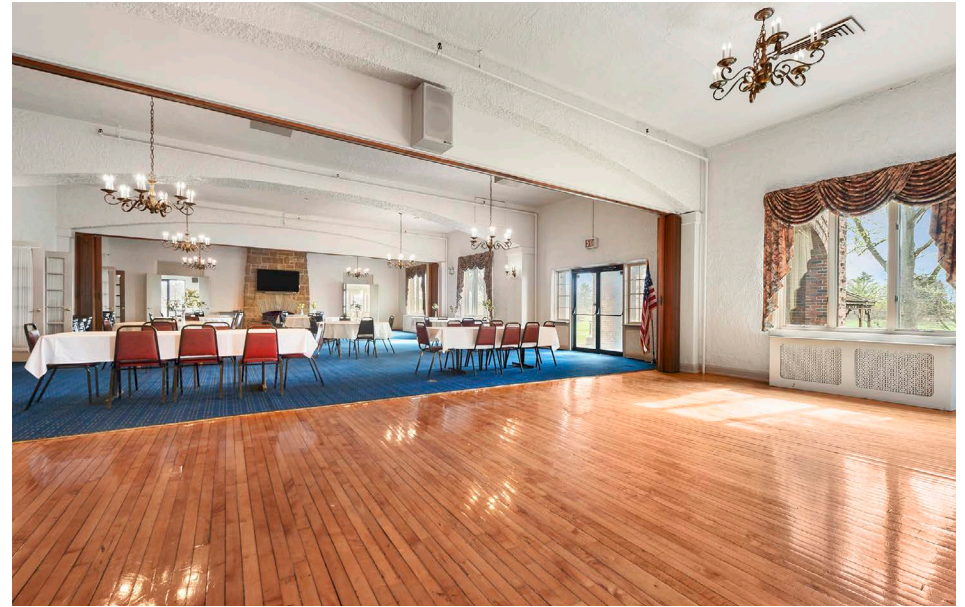
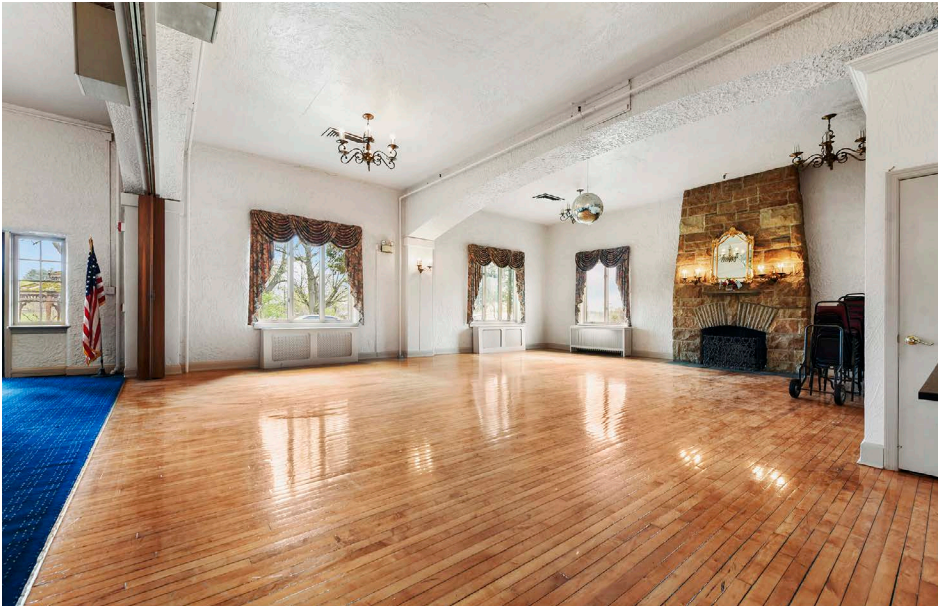
REAL ESTATE

ballymoneyrealestate.com



PROPERTY HIGHLIGHTS

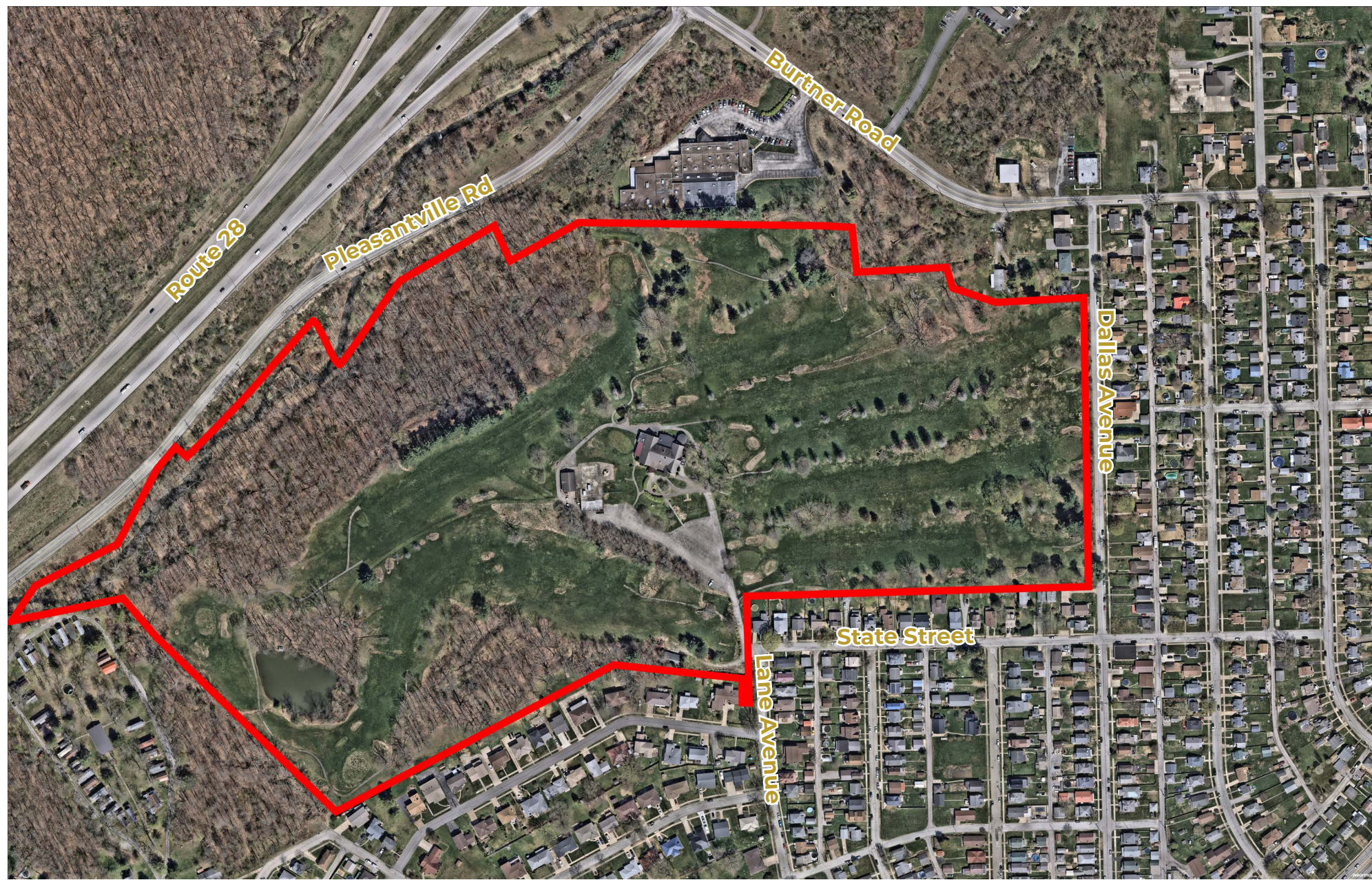
- Former golf club for sale
- Reopen as golf club or redevelop
- 12,000 sq. ft. club house in excellent condition includes:
 - commercial kitchen
 - 300 seat ball room
 - three private bar areas
 - verandas
 - locker rooms
 - pro shop
 - entire 2nd floor and basement
- 86 acres of gorgeous land with ponds, irrigation and out buildings
- Multiple access points to the property including from Burtner Rd, Pleasantville (off Rt 28), State and Lane Avenues
- Located in Allegheny County, minutes from Rt 28's Exit 15, at the axis of 4 Counties: Westmoreland, Butler & Armstrong Counties
- Gas well on site is sufficient to heat the entire Club House
- Mineral rights will be not conveyed with the sale











The History

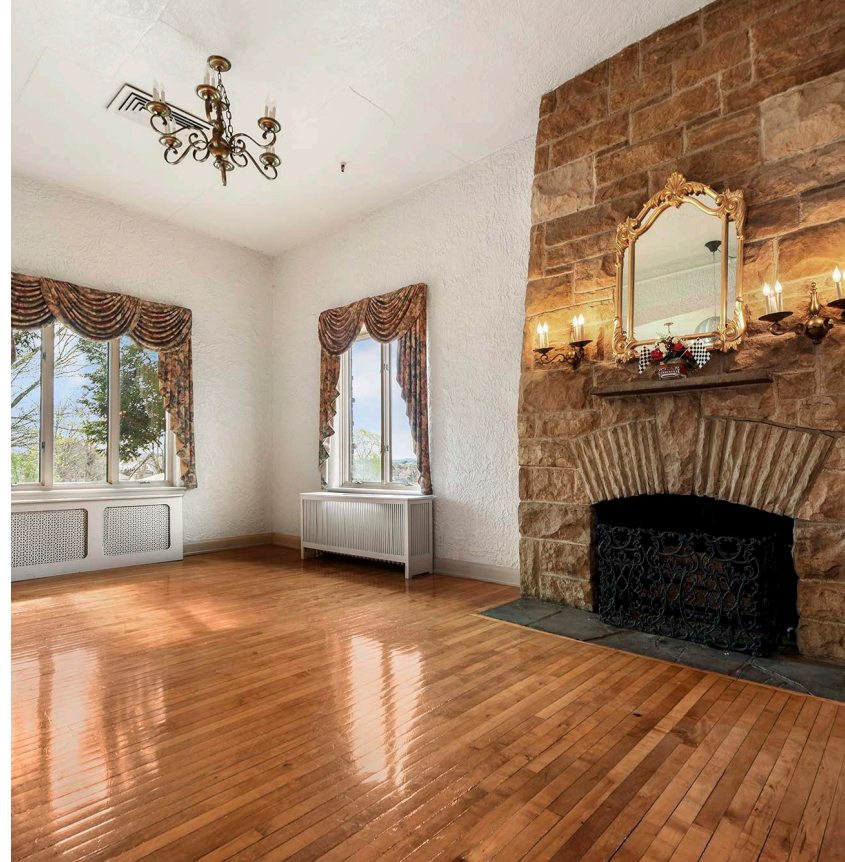
Located in Natrona Heights just northeast of Pittsburgh, the Brackenridge Heights Country Club traces its roots back more than a century to the early growth of golf and country club culture in Western Pennsylvania. Established in the early 1900s (with records indicating operation by 1910 and course development around 1918), the club was originally conceived as a traditional private country club, serving the region's industrial-era communities along the Allegheny River.

The property reflects the character of many legacy clubs of its era—modest in scale but deeply embedded in its local community. The 9-hole course, historically attributed to noted early golf architect Tom Bendelow, was designed to take advantage of the area's rolling topography and wooded landscape, offering a classic, walkable layout that appealed to both casual and dedicated players.

For much of its history, the club operated as a private, member-driven facility, typical of early 20th-century country clubs that served as both recreational and social hubs. However, like many similar properties across the region, it experienced the broader industry shift away from private memberships in recent decades. After nearly a century as a private club, it transitioned to a more accessible, public-oriented model before ultimately ceasing operations in 2017.

The surrounding Brackenridge and Natrona Heights area provide important context for the asset. This corridor along the Allegheny River developed alongside Pittsburgh's steel and manufacturing economy, with deep roots tied to major industrial employers and long-established residential neighborhoods. Today, the area remains part of the greater Pittsburgh metro, offering proximity to the city (approximately 20–25 miles) while maintaining a suburban, community-oriented setting.

From an investment perspective, properties like Brackenridge Heights are increasingly compelling due to their combination of open land, established infrastructure, and location within mature communities. As trends in Western Pennsylvania have shown, former country club sites often present flexible repositioning opportunities—whether as revitalized recreational assets, public golf facilities, or alternative development uses—while retaining the intrinsic appeal of scenic, well-situated acreage.





LORI MORAN

lmoran@ballymoneyrealestate.com

600 Grant Street

44th Floor

Pittsburgh, PA 15219

direct (412) 566.1993

ballymoneyrealestate.com

BALLYMONEY

REAL ESTATE