

FOR LEASE

NORTHPARK XV

NorthPark Business Park | 6965 Northpark Blvd. | Charlotte, NC 28216



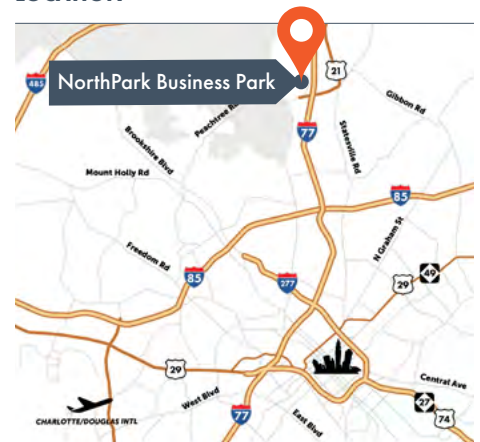
PROPERTY HIGHLIGHTS



Located near two major Charlotte highways and close proximity to Uptown, you'll want to call NorthPark Business Park the home for your business. As one of the larger industrial parks in Charlotte, NorthPark Business Park features 19 buildings with more than 2 million square feet. With easy access on and off the interstate, NorthPark XV offers 162,520 square feet with the following features:

- Class A Master-Planned Business Park
- 162,520 SF total
- 24' clear height
- 42'-wide x 40'-deep column spacing
- 120'-deep concrete and asphalt truck court
- Rear loading dock location
- ESFR sprinkler
- Zoned I-1, CD

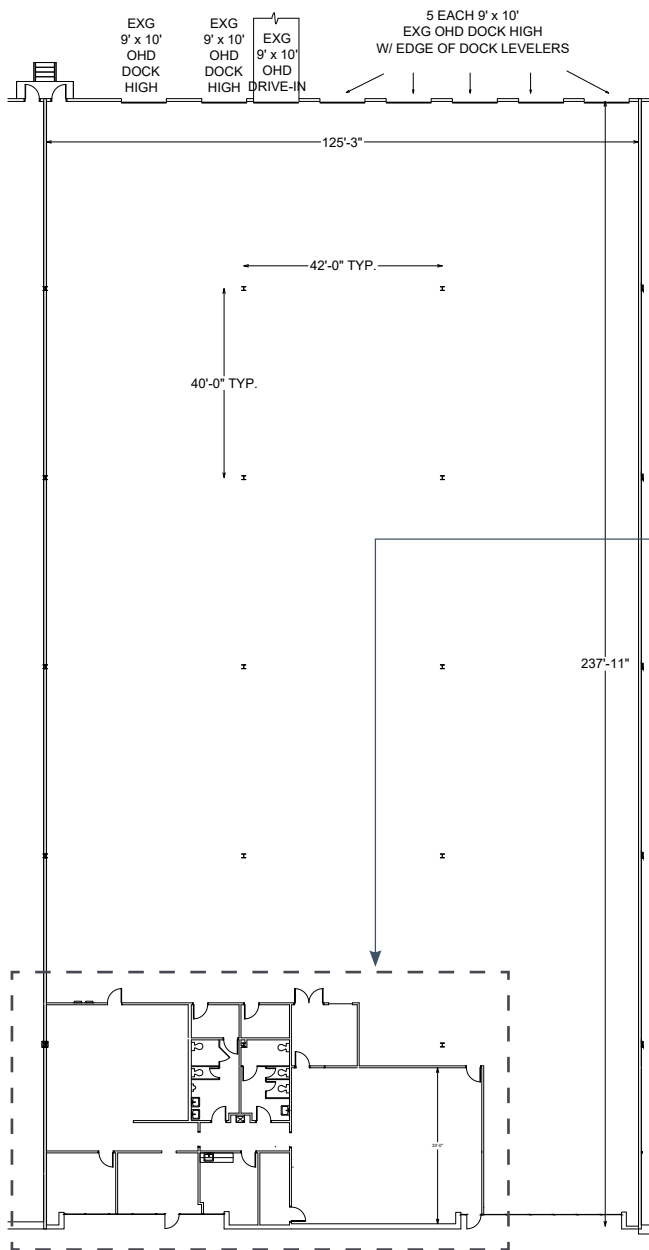
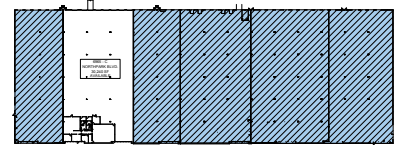
LOCATION



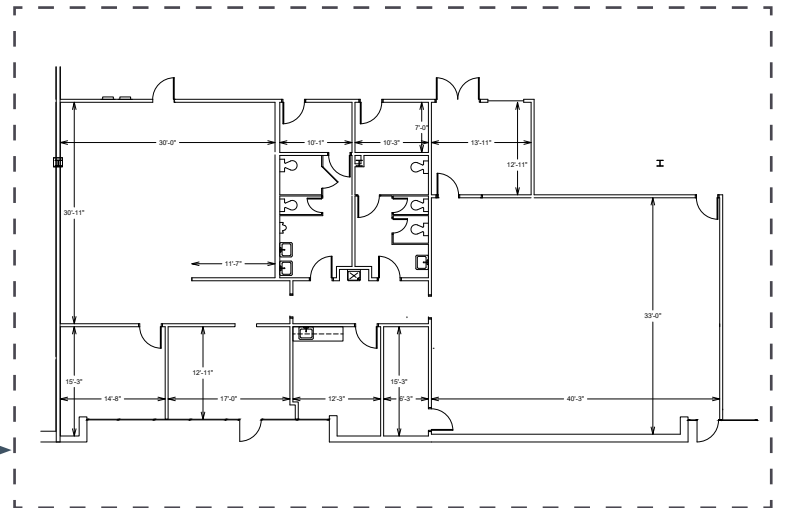
SPEC SUITE FOR LEASE

6965-C NORTH PARK BOULEVARD

NorthPark Business Park | 6965 Northpark Blvd. | Charlotte, NC 28216



ENLARGED OFFICE SPACE



FEATURES - Suite C

- 30,240 SF total
- 4,085 SF of office space
- Dimensions 126'-wide x 240'-deep
- Seven (7) 9' x 10' loading doors, five (5) with edge-of-dock levelers
- One (1) 9'-wide x 10'-high drive-in door
- 24' clear height