

SOUTHFIELD, MI OAKLAND COMMONS



FOR LEASE

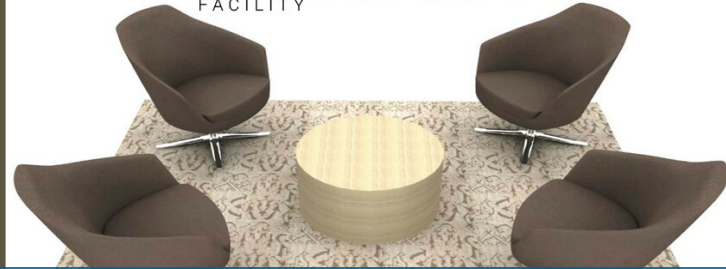


L
I
G
H
T

M
O
D
E
R
N



RIGHTSIZE
FACILITY



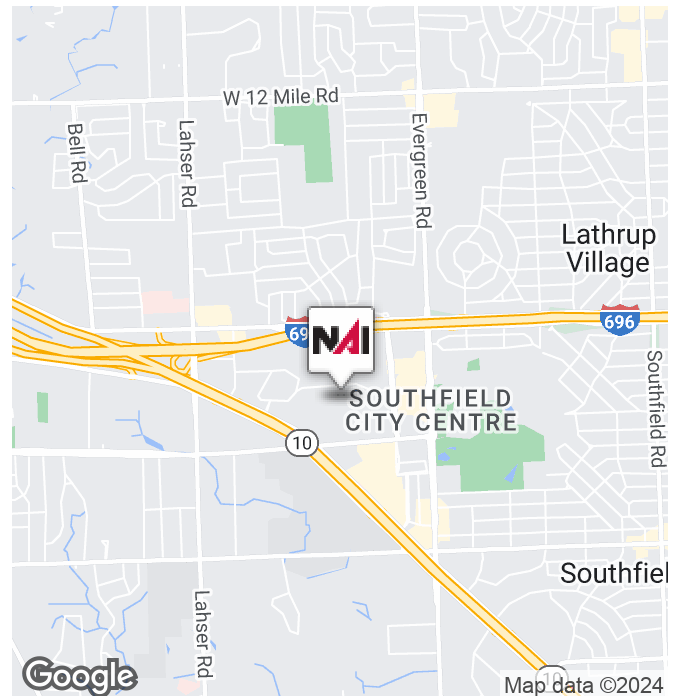
REVAMPING OUR LOBBY WITH STYLISH NEW FURNISHINGS - COMING SOON!

20700-20750 Civic Center Dr

Southfield, Michigan 48076

Property Highlights

- 6-Story Class "A" Office Buildings
- Building Signage Offered
- Flexible Large Floor Plates
- On-Site Fitness, Conference Center and Restaurant
- High Speed Elevators
- Gorgeous Views with Abundant Natural Light
- Convenient Parking
- On-Site Management
- \$17.50/RSF Gross + Electric
- Unbeatable Freeway Access
- Security, 24/7 Access and Loading Docks



NAI Farbman

Commercial Real Estate Services, Worldwide.

www.naifarbman.com

Lesley Gutman

Senior Vice President | 248.860.6800

lgutman@farbman.com

NO WARRANTY, EXPRESS OR IMPLIED, IS MADE AS TO THE ACCURACY OF THE INFORMATION CONTAINED HEREIN. THIS INFORMATION IS SUBMITTED SUBJECT TO ERRORS, OMISSIONS, CHANGE OF PRICE, RENTAL OR OTHER CONDITIONS, WITHDRAWAL WITHOUT NOTICE, AND IS SUBJECT TO ANY SPECIAL LISTING CONDITIONS IMPOSED BY OUR PRINCIPALS, COOPERATING BROKERS, BUYERS, TENANTS AND OTHER PARTIES WHO RECEIVE THIS DOCUMENT SHOULD NOT RELY ON IT, BUT SHOULD USE IT AS A STARTING POINT OF ANALYSIS, AND SHOULD INDEPENDENTLY CONFIRM THE ACCURACY OF THE INFORMATION CONTAINED HEREIN THROUGH A DUE DILIGENCE REVIEW OF THE BOOKS, RECORDS, FILES AND DOCUMENTS THAT CONSTITUTE RELIABLE SOURCES OF THE INFORMATION DESCRIBED HEREIN. LOGOS ARE FOR IDENTIFICATION PURPOSES ONLY AND MAY BE TRADEMARKS OF THEIR RESPECTIVE COMPANIES. NAI Farbman, INC. CA BRE LIC. #01990696.

SOUTHFIELD, MI OAKLAND COMMONS



FOR LEASE

Lease Rate	\$17.50 PSF GROSS + ELECTRIC
------------	---

AVAILABLE SUITES - 20700 CIVIC CENTER DR

Suite 360	4,312 RSF
Suite 390	6,812 RSF

AVAILABLE SUITES - 20750 CIVIC CENTER DR

Suite 270	770 RSF
Suite 290	7,028 RSF
Suite 305	8,003 RSF
Suite 340	2,010 RSF
Suite 345	2,814 RSF
Suite 410	1,692 RSF
Suite 415	829 RSF
Suite 430	4,420 RSF
Suite 500	13,611 RSF
Suite 550	7,551 RSF
Suite 615	527 RSF
Suite 620	988 RSF
Suite 630	1,221 RSF
Suite 640	483 RSF
Suite 650	4,478 RSF

LOCATION INFORMATION

Street Address	20700-20750 Civic Center Dr
City, State, Zip	Southfield, MI 48076
County	Oakland
Cross-Streets	Northwestern / Civic Center Dr
Nearest Highway	M-10 / I-696

BUILDING INFORMATION

Building Size	310,739 SF
Building Class	A
Tenancy	Multiple
Number of Floors	6
Average Floor Size	30,000 SF
Year Built	1999-2001
Last Year Renovated	2024
Annual Escalations	\$0.50/SF
Partition Allowance	Negotiable

PARKING & TRANSPORTATION

Parking Type	Surface
Parking Ratio	5.0



Commercial Real Estate Services. Worldwide.
www.naifarbman.com

Lesley Gutman
Senior Vice President | 248.860.6800
lgutman@farbman.com

NO WARRANTY, EXPRESS OR IMPLIED, IS MADE AS TO THE ACCURACY OF THE INFORMATION CONTAINED HEREIN. THIS INFORMATION IS SUBMITTED SUBJECT TO ERRORS, OMISSIONS, CHANGE OF PRICE, RENTAL OR OTHER CONDITIONS, WITHDRAWAL WITHOUT NOTICE, AND IS SUBJECT TO ANY SPECIAL LISTING CONDITIONS IMPOSED BY OUR PRINCIPALS, COOPERATING BROKERS, BUYERS, TENANTS AND OTHER PARTIES WHO RECEIVE THIS DOCUMENT SHOULD NOT RELY ON IT, BUT SHOULD USE IT AS A STARTING POINT OF ANALYSIS, AND SHOULD INDEPENDENTLY CONFIRM THE ACCURACY OF THE INFORMATION CONTAINED HEREIN THROUGH A DUE DILIGENCE REVIEW OF THE BOOKS, RECORDS, FILES AND DOCUMENTS THAT CONSTITUTE RELIABLE SOURCES OF THE INFORMATION DESCRIBED HEREIN. LOGOS ARE FOR IDENTIFICATION PURPOSES ONLY AND MAY BE TRADEMARKS OF THEIR RESPECTIVE COMPANIES. NAI Farbman, INC. CA BRE LIC. #01990696.

SOUTHFIELD, MI OAKLAND COMMONS



FOR LEASE



NAI Farbman

Commercial Real Estate Services, Worldwide.

www.naifarbman.com

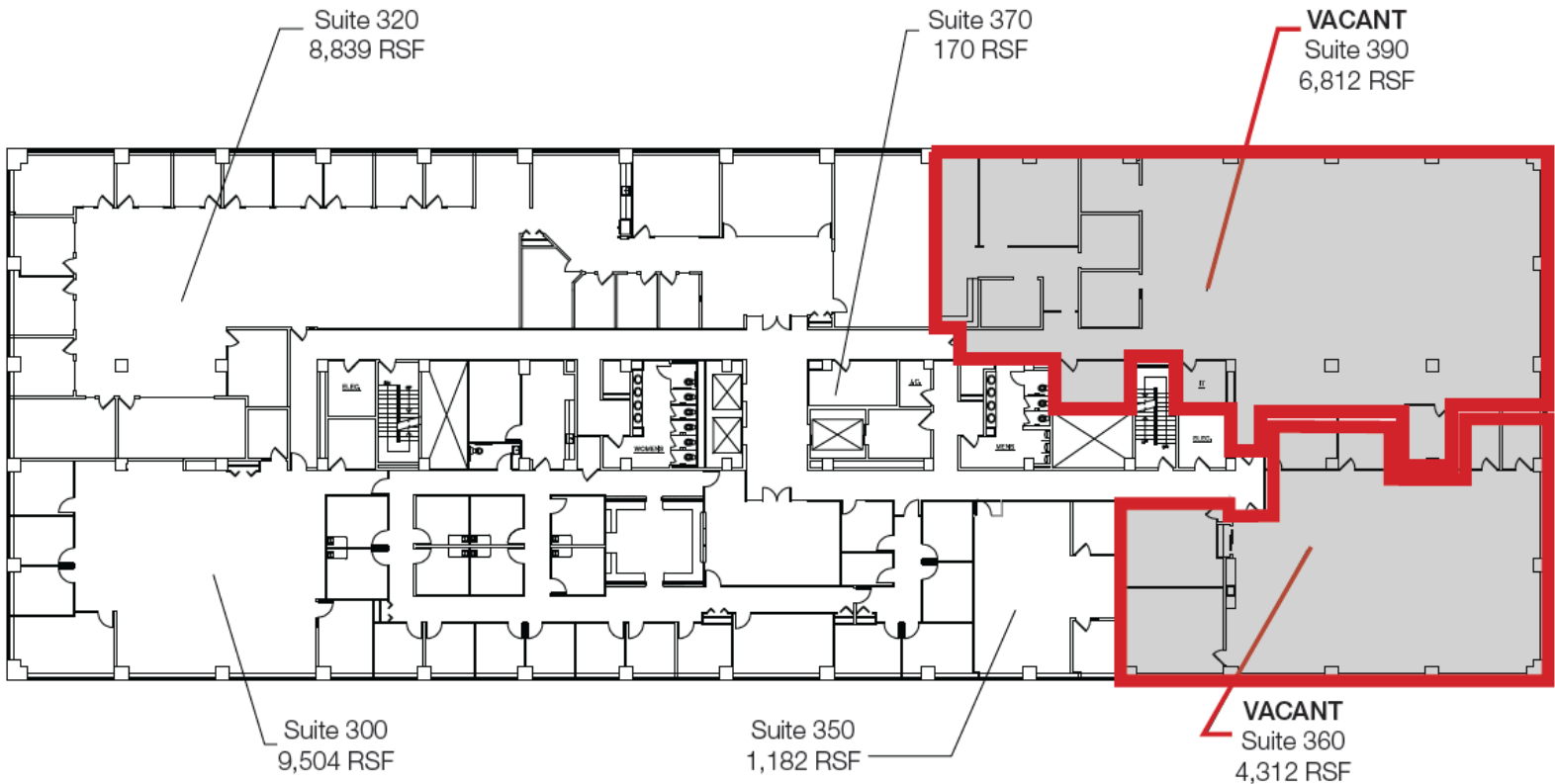
Lesley Gutman
Senior Vice President | 248.860.6800
lgutman@farbman.com

NO WARRANTY, EXPRESS OR IMPLIED, IS MADE AS TO THE ACCURACY OF THE INFORMATION CONTAINED HEREIN. THIS INFORMATION IS SUBMITTED SUBJECT TO ERRORS, OMISSIONS, CHANGE OF PRICE, RENTAL OR OTHER CONDITIONS, WITHDRAWAL WITHOUT NOTICE, AND IS SUBJECT TO ANY SPECIAL LISTING CONDITIONS IMPOSED BY OUR PRINCIPALS. COOPERATING BROKERS, BUYERS, TENANTS AND OTHER PARTIES WHO RECEIVE THIS DOCUMENT SHOULD NOT RELY ON IT, BUT SHOULD USE IT AS A STARTING POINT OF ANALYSIS, AND SHOULD INDEPENDENTLY CONFIRM THE ACCURACY OF THE INFORMATION CONTAINED HEREIN THROUGH A DUE DILIGENCE REVIEW OF THE BOOKS, RECORDS, FILES AND DOCUMENTS THAT CONSTITUTE RELIABLE SOURCES OF THE INFORMATION DESCRIBED HEREIN. LOGOS ARE FOR IDENTIFICATION PURPOSES ONLY AND MAY BE TRADEMARKS OF THEIR RESPECTIVE COMPANIES. NAI Farbman, INC. CA BRE LIC. #01990696.

SOUTHFIELD, MI OAKLAND COMMONS



FOR LEASE



*Suites 360/390 can be combined
for a total of 11,124 RSF



MASTER PLAN

OAKLAND COMMONS | - 3RD FLOOR

4-29-24

SCALE: 1" = 30'-0"

NAIFarbman

Commercial Real Estate Services, Worldwide.

www.naifarbman.com

Lesley Gutman

Senior Vice President | 248.860.6800

lgutman@farbman.com

NO WARRANTY, EXPRESS OR IMPLIED, IS MADE AS TO THE ACCURACY OF THE INFORMATION CONTAINED HEREIN. THIS INFORMATION IS SUBMITTED SUBJECT TO ERRORS, OMISSIONS, CHANGE OF PRICE, RENTAL OR OTHER CONDITIONS, WITHDRAWAL WITHOUT NOTICE, AND IS SUBJECT TO ANY SPECIAL LISTING CONDITIONS IMPOSED BY OUR PRINCIPALS, COOPERATING BROKERS, BUYERS, TENANTS AND OTHER PARTIES WHO RECEIVE THIS DOCUMENT SHOULD NOT RELY ON IT, BUT SHOULD USE IT AS A STARTING POINT OF ANALYSIS, AND SHOULD INDEPENDENTLY CONFIRM THE ACCURACY OF THE INFORMATION CONTAINED HEREIN THROUGH A DUE DILIGENCE REVIEW OF THE BOOKS, RECORDS, FILES AND DOCUMENTS THAT CONSTITUTE RELIABLE SOURCES OF THE INFORMATION DESCRIBED HEREIN. LOGOS ARE FOR IDENTIFICATION PURPOSES ONLY AND MAY BE TRADEMARKS OF THEIR RESPECTIVE COMPANIES. NAI Farbman, INC. CA BRE LIC. #01990696.

SOUTHFIELD, MI OAKLAND COMMONS

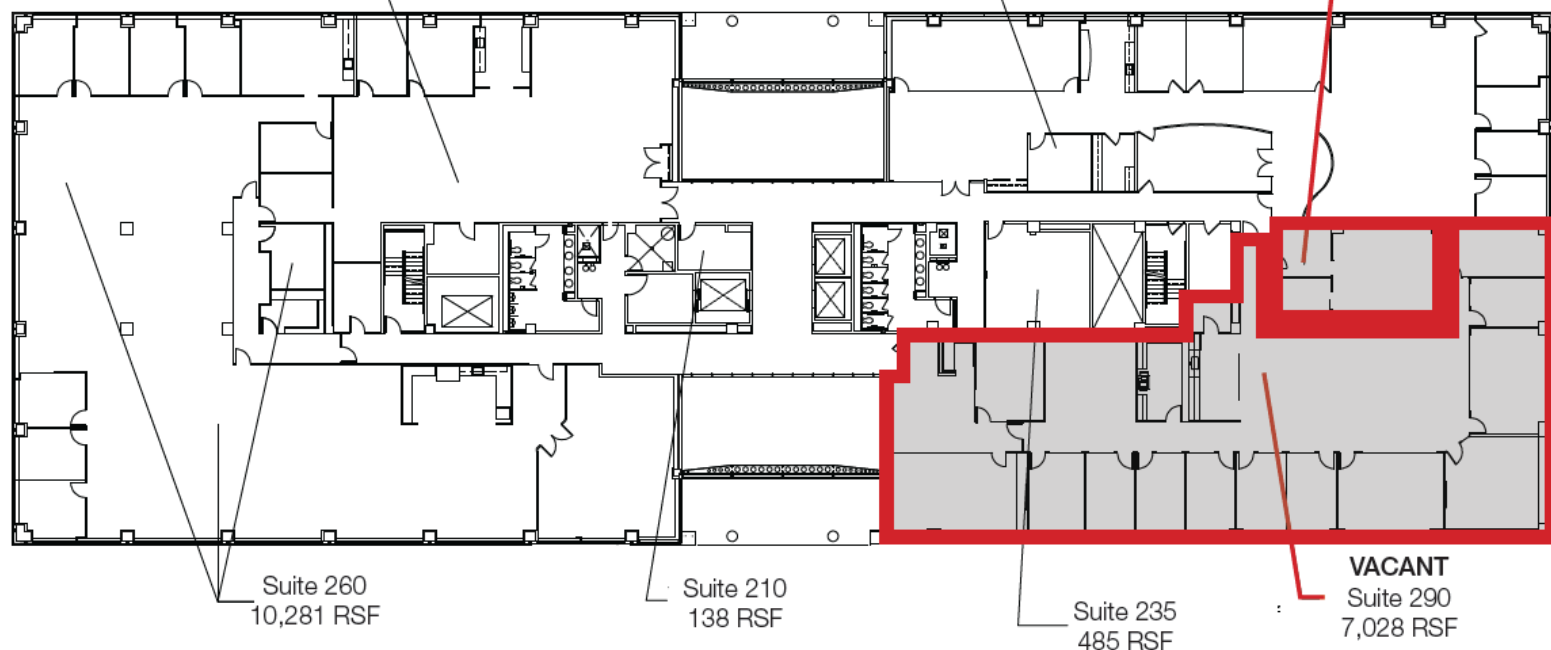


FOR LEASE

Suite 220
3,352 RSF

Suite 230
5,629 RSF

VACANT
Suite 270
770 RSF



Suite 260
10,281 RSF

Suite 210
138 RSF

Suite 235
485 RSF

VACANT
Suite 290
7,028 RSF

*Suites 270/290 can be combined
for a total of 7,798 RSF



MASTER PLAN

OAKLAND COMMONS II - 2ND FLOOR

NAIFarbman

Commercial Real Estate Services, Worldwide.
www.naifarbman.com

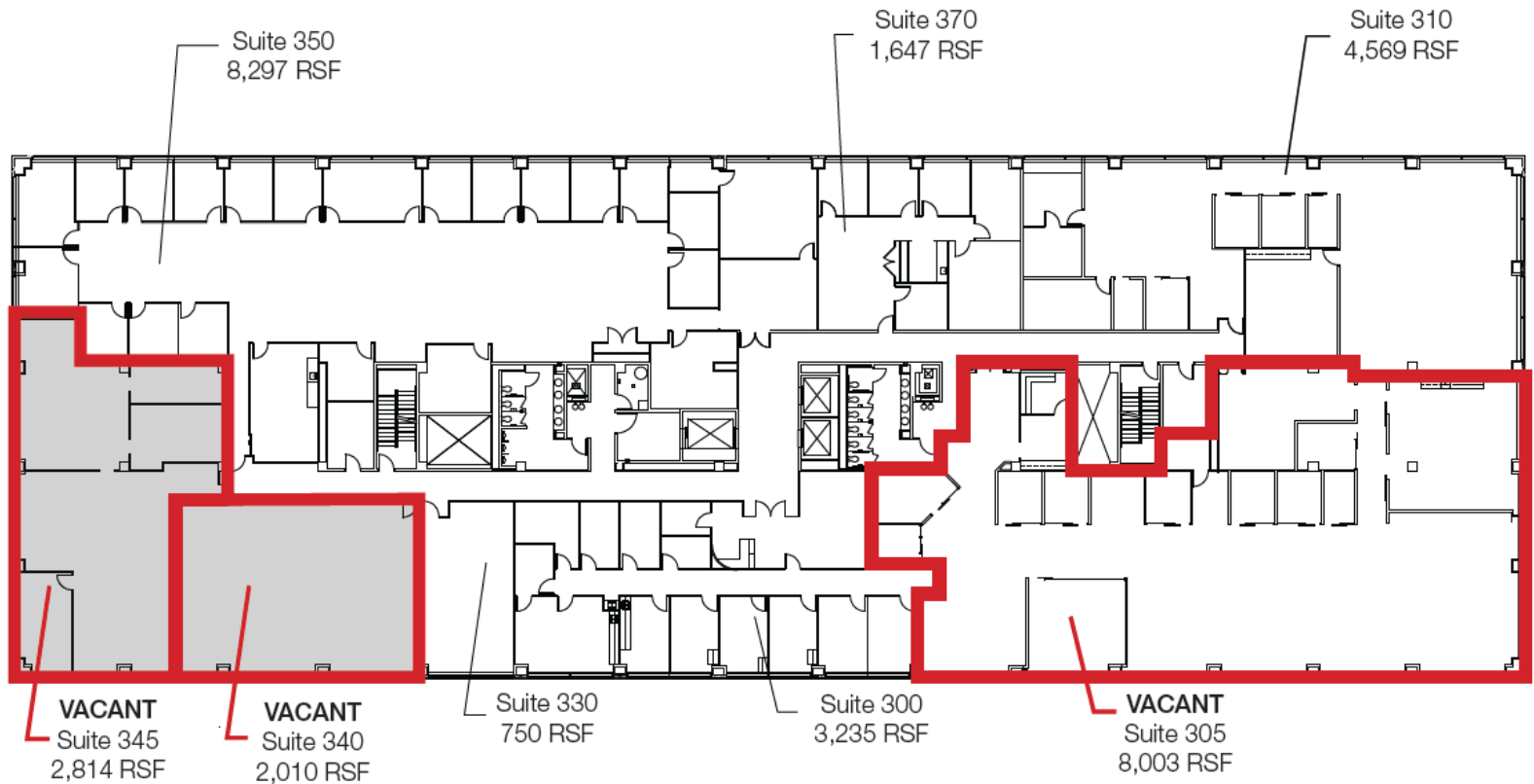
Lesley Gutman
Senior Vice President | 248.860.6800
lgutman@farbman.com

NO WARRANTY, EXPRESS OR IMPLIED, IS MADE AS TO THE ACCURACY OF THE INFORMATION CONTAINED HEREIN. THIS INFORMATION IS SUBMITTED SUBJECT TO ERRORS, OMISSIONS, CHANGE OF PRICE, RENTAL OR OTHER CONDITIONS, WITHDRAWAL WITHOUT NOTICE, AND IS SUBJECT TO ANY SPECIAL LISTING CONDITIONS IMPOSED BY OUR PRINCIPALS. COOPERATING BROKERS, BUYERS, TENANTS AND OTHER PARTIES WHO RECEIVE THIS DOCUMENT SHOULD NOT RELY ON IT, BUT SHOULD USE IT AS A STARTING POINT OF ANALYSIS, AND SHOULD INDEPENDENTLY CONFIRM THE ACCURACY OF THE INFORMATION CONTAINED HEREIN THROUGH A DUE DILIGENCE REVIEW OF THE BOOKS, RECORDS, FILES AND DOCUMENTS THAT CONSTITUTE RELIABLE SOURCES OF THE INFORMATION DESCRIBED HEREIN. LOGOS ARE FOR IDENTIFICATION PURPOSES ONLY AND MAY BE TRADEMARKS OF THEIR RESPECTIVE COMPANIES. NAI Farbman, INC. CA BRE LIC. #01990696.

SOUTHFIELD, MI OAKLAND COMMONS



FOR LEASE



*Suites 345/340 can be combined
for a total of 4,824 RSF



NORTH

MASTER PLAN

OAKLAND COMMONS II - 3RD FLOOR

4-29-24

SCALE: 1" = 30'-0"

NAI Farbman

Commercial Real Estate Services, Worldwide.

www.naifarbman.com

Lesley Gutman

Senior Vice President | 248.860.6800

lgutman@farbman.com

NO WARRANTY, EXPRESS OR IMPLIED, IS MADE AS TO THE ACCURACY OF THE INFORMATION CONTAINED HEREIN. THIS INFORMATION IS SUBMITTED SUBJECT TO ERRORS, OMISSIONS, CHANGE OF PRICE, RENTAL OR OTHER CONDITIONS, WITHDRAWAL WITHOUT NOTICE, AND IS SUBJECT TO ANY SPECIAL LISTING CONDITIONS IMPOSED BY OUR PRINCIPALS, COOPERATING BROKERS, BUYERS, TENANTS AND OTHER PARTIES WHO RECEIVE THIS DOCUMENT SHOULD NOT RELY ON IT, BUT SHOULD USE IT AS A STARTING POINT OF ANALYSIS, AND SHOULD INDEPENDENTLY CONFIRM THE ACCURACY OF THE INFORMATION CONTAINED HEREIN THROUGH A DUE DILIGENCE REVIEW OF THE BOOKS, RECORDS, FILES AND DOCUMENTS THAT CONSTITUTE RELIABLE SOURCES OF THE INFORMATION DESCRIBED HEREIN. LOGOS ARE FOR IDENTIFICATION PURPOSES ONLY AND MAY BE TRADEMARKS OF THEIR RESPECTIVE COMPANIES. NAI Farbman, INC. CA BRE LIC. #01990696.

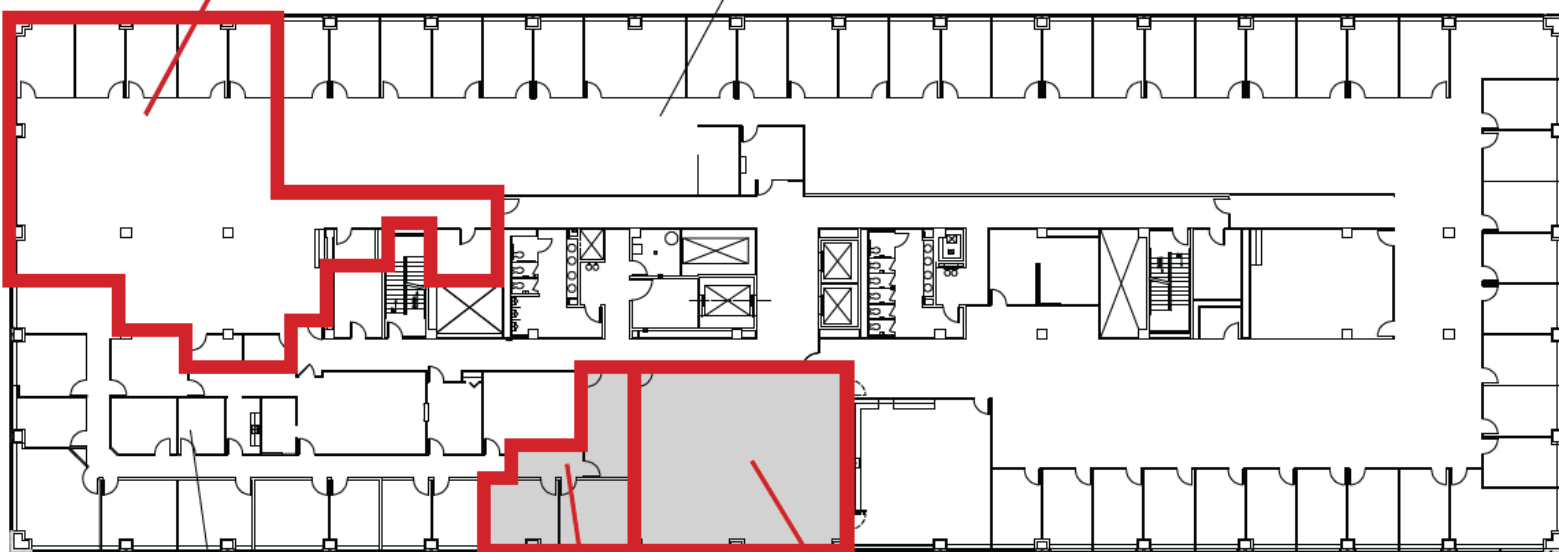
SOUTHFIELD, MI OAKLAND COMMONS



FOR LEASE

VACANT
Suite 430
4,420 RSF

Suite 400
20,081 RSF



Suite 418
4,617 RSF

VACANT
Suite 415
829 RSF

VACANT
Suite 410
1,692 RSF

*Suites 410/415 can be combined
for a total of 2,521 RSF



MASTER PLAN

OAKLAND COMMONS II - 4TH FLOOR

4-29-24

SCALE: 1" = 30'

NAI Farbman

Commercial Real Estate Services, Worldwide.

www.naifarbman.com

Lesley Gutman

Senior Vice President | 248.860.6800

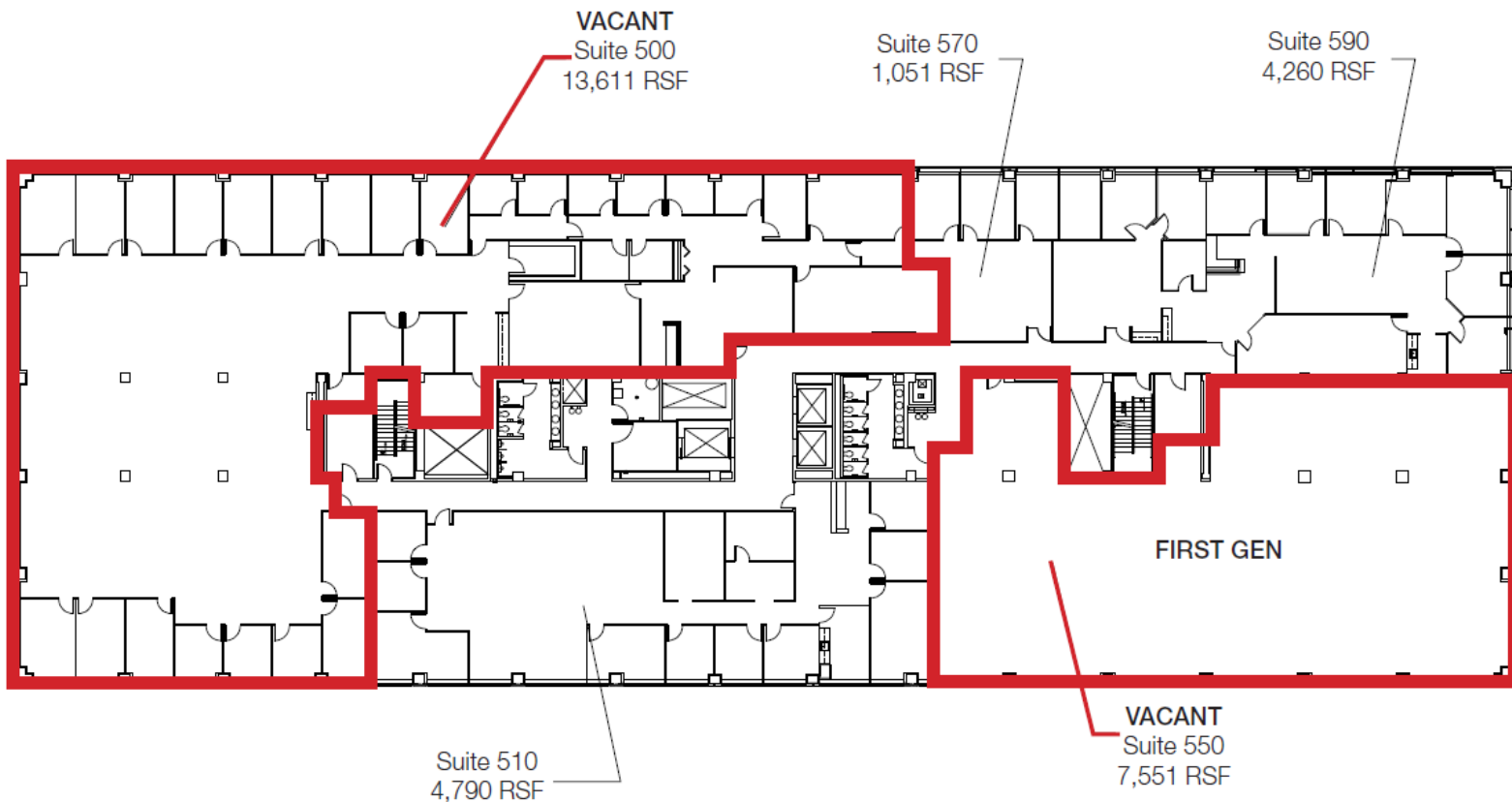
lgutman@farbman.com

NO WARRANTY, EXPRESS OR IMPLIED, IS MADE AS TO THE ACCURACY OF THE INFORMATION CONTAINED HEREIN. THIS INFORMATION IS SUBMITTED SUBJECT TO ERRORS, OMISSIONS, CHANGE OF PRICE, RENTAL OR OTHER CONDITIONS, WITHDRAWAL WITHOUT NOTICE, AND IS SUBJECT TO ANY SPECIAL LISTING CONDITIONS IMPOSED BY OUR PRINCIPALS, COOPERATING BROKERS, BUYERS, TENANTS AND OTHER PARTIES WHO RECEIVE THIS DOCUMENT SHOULD NOT RELY ON IT, BUT SHOULD USE IT AS A STARTING POINT OF ANALYSIS, AND SHOULD INDEPENDENTLY CONFIRM THE ACCURACY OF THE INFORMATION CONTAINED HEREIN THROUGH A DUE DILIGENCE REVIEW OF THE BOOKS, RECORDS, FILES AND DOCUMENTS THAT CONSTITUTE RELIABLE SOURCES OF THE INFORMATION DESCRIBED HEREIN. LOGOS ARE FOR IDENTIFICATION PURPOSES ONLY AND MAY BE TRADEMARKS OF THEIR RESPECTIVE COMPANIES. NAI Farbman, INC. CA BRE LIC. #01990696.

SOUTHFIELD, MI OAKLAND COMMONS



FOR LEASE



MASTER PLAN OAKLAND COMMONS II - 5TH FLOOR

NAIFarbman

Commercial Real Estate Services, Worldwide.

www.naifarbman.com

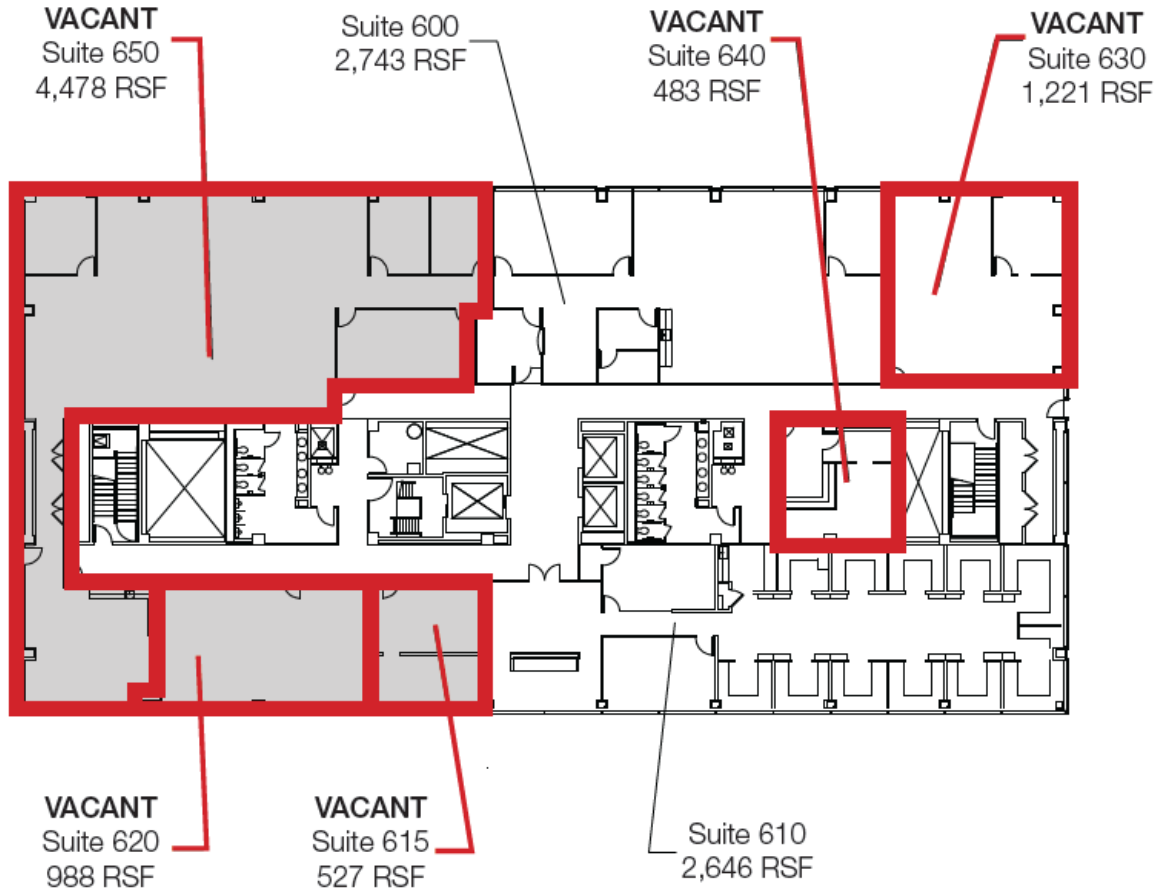
Lesley Gutman
Senior Vice President | 248.860.6800
lgutman@farbman.com

NO WARRANTY, EXPRESS OR IMPLIED, IS MADE AS TO THE ACCURACY OF THE INFORMATION CONTAINED HEREIN. THIS INFORMATION IS SUBMITTED SUBJECT TO ERRORS, OMISSIONS, CHANGE OF PRICE, RENTAL OR OTHER CONDITIONS, WITHDRAWAL WITHOUT NOTICE, AND IS SUBJECT TO ANY SPECIAL LISTING CONDITIONS IMPOSED BY OUR PRINCIPALS, COOPERATING BROKERS, BUYERS, TENANTS AND OTHER PARTIES WHO RECEIVE THIS DOCUMENT SHOULD NOT RELY ON IT, BUT SHOULD USE IT AS A STARTING POINT OF ANALYSIS, AND SHOULD INDEPENDENTLY CONFIRM THE ACCURACY OF THE INFORMATION CONTAINED HEREIN THROUGH A DUE DILIGENCE REVIEW OF THE BOOKS, RECORDS, FILES AND DOCUMENTS THAT CONSTITUTE RELIABLE SOURCES OF THE INFORMATION DESCRIBED HEREIN. LOGOS ARE FOR IDENTIFICATION PURPOSES ONLY AND MAY BE TRADEMARKS OF THEIR RESPECTIVE COMPANIES. NAI Farbman, INC. CA BRE LIC. #01990696.

SOUTHFIELD, MI OAKLAND COMMONS



FOR LEASE



*Suites 615/620/650 can be combined for a total of 5,993 RSF



MASTER PLAN

OAKLAND COMMONS II - 6TH FLOOR

4-29-24

SCALE: 1" = 30'

NAIFarbman

Commercial Real Estate Services, Worldwide.
www.naifarbman.com

Lesley Gutman
Senior Vice President | 248.860.6800
lgutman@farbman.com

NO WARRANTY, EXPRESS OR IMPLIED, IS MADE AS TO THE ACCURACY OF THE INFORMATION CONTAINED HEREIN. THIS INFORMATION IS SUBMITTED SUBJECT TO ERRORS, OMISSIONS, CHANGE OF PRICE, RENTAL OR OTHER CONDITIONS, WITHDRAWAL WITHOUT NOTICE, AND IS SUBJECT TO ANY SPECIAL LISTING CONDITIONS IMPOSED BY OUR PRINCIPALS, COOPERATING BROKERS, BUYERS, TENANTS AND OTHER PARTIES WHO RECEIVE THIS DOCUMENT SHOULD NOT RELY ON IT, BUT SHOULD USE IT AS A STARTING POINT OF ANALYSIS, AND SHOULD INDEPENDENTLY CONFIRM THE ACCURACY OF THE INFORMATION CONTAINED HEREIN THROUGH A DUE DILIGENCE REVIEW OF THE BOOKS, RECORDS, FILES AND DOCUMENTS THAT CONSTITUTE RELIABLE SOURCES OF THE INFORMATION DESCRIBED HEREIN. LOGOS ARE FOR IDENTIFICATION PURPOSES ONLY AND MAY BE TRADEMARKS OF THEIR RESPECTIVE COMPANIES. NAI Farbman, INC. CA BRE LIC. #01990696.