

HAYDEN ISLAND PLAZA

700 N Hayden Island Drive | Portland OR 97217

FOR LEASE



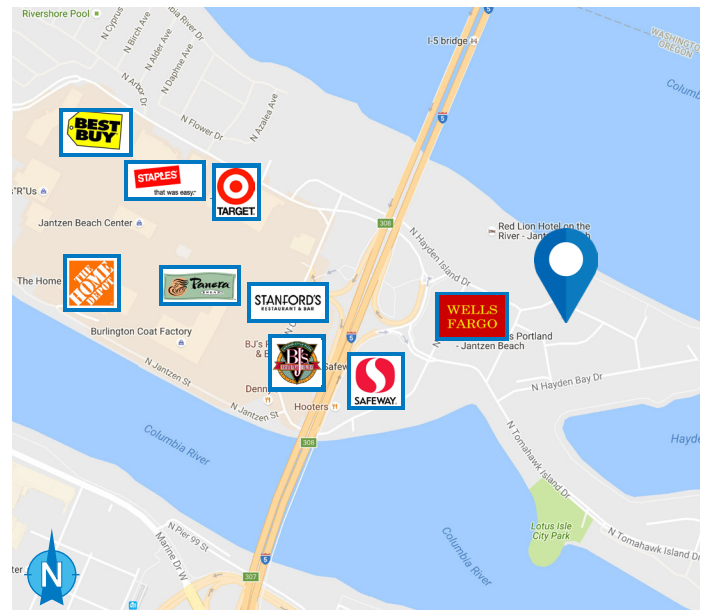
OFFICE SPACE FOR LEASE

DETAILS

- Lease Rate: \$15 PSF Full Service with new 5 yr deals ("as-is") (New Tenant Promo!)
- Suite 150:** ± 2,013 SF
- Suite 165:** ± 1,326 SF
- Suite 170:** ± 1,926 SF
- Suite 200:** ± 2,602 SF
- Suite 220:** ± 2,068 SF
- Suite 310:** ± 1,867 SF
- Suite 330:** ± 2,083 SF
- Suite 350:** ± 973 SF
- Suite 395:** ± 4,861 SF

FEATURES

- Easy access from I-5 & free parking
- ADA elevator served, shared conference room
- Close to Jantzen Beach Center with Target, Staples, Home Depot, and Best Buy
- Restaurants include Stanford's, BJ's, Jersey Mikes, Jimmy John's, and Panera Bread



04.24.2026

For more information or a property tour, please contact:

DOUG CARTER

503.225.8499

DougC@norris-stevens.com



Information contained herein has been obtained from others and considered to be reliable; however, a prospective purchaser or lessee is expected to verify all information to their own satisfaction.

Norris & Stevens

INVESTMENT REAL ESTATE SERVICES

900 SW 5th Avenue • 17th Floor • Portland, OR 97204
503.223.3171 • norris-stevens.com

HAYDEN ISLAND PLAZA

700 N Hayden Island Drive | Portland OR 97217

FOR LEASE

PROPERTY PHOTOS



For more information or a property tour, please contact:

DOUG CARTER

503.225.8499

DougC@norris-stevens.com



Information contained herein has been obtained from others and considered to be reliable; however, a prospective purchaser or lessee is expected to verify all information to their own satisfaction.

Norris & Stevens

INVESTMENT REAL ESTATE SERVICES

900 SW 5th Avenue • 17th Floor • Portland, OR 97204

503.223.3171 • norris-stevens.com

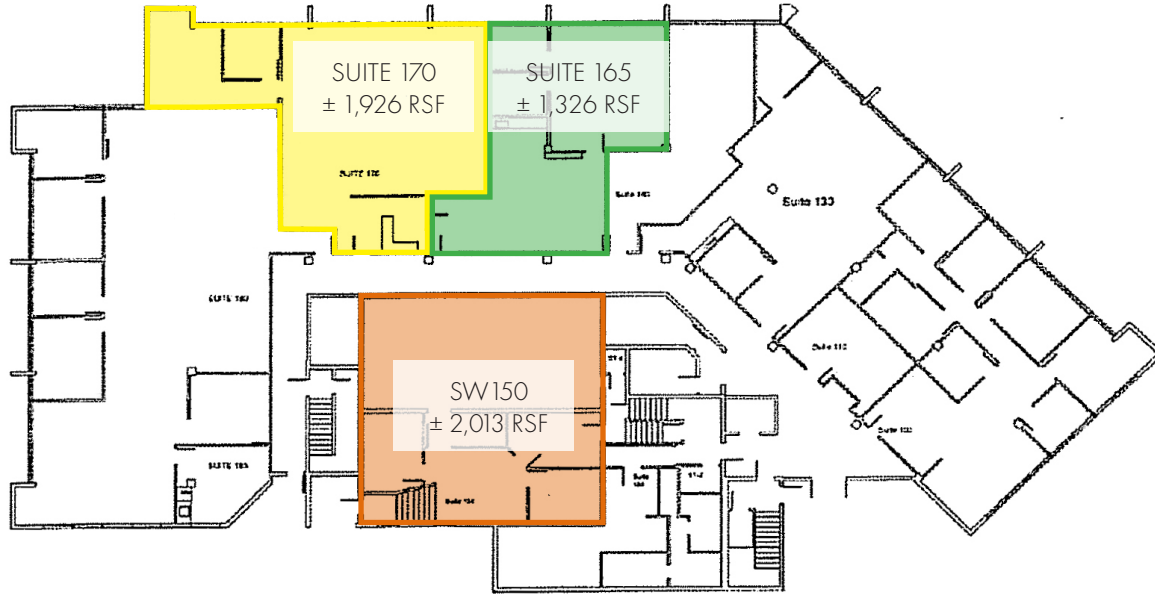
HAYDEN ISLAND PLAZA

700 N Hayden Island Drive | Portland OR 97217

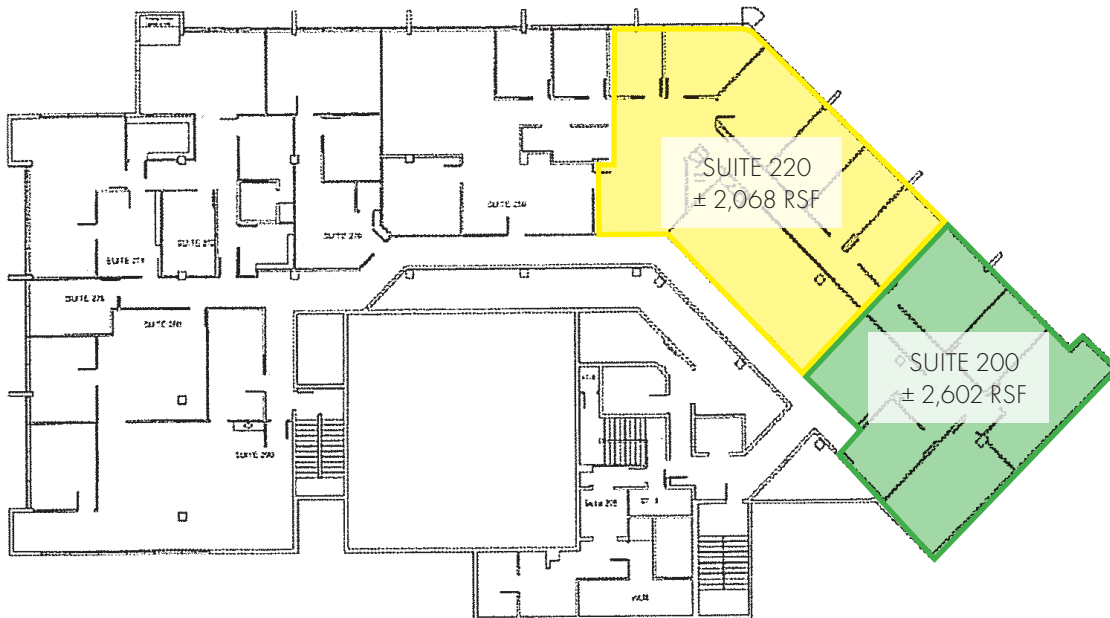
FOR LEASE

FLOOR PLANS

FIRST FLOOR PLAN



SECOND FLOOR PLAN



For more information or a property tour, please contact:

DOUG CARTER

503.225.8499

DougC@norris-stevens.com

Norris & Stevens

INVESTMENT REAL ESTATE SERVICES



Information contained herein has been obtained from others and considered to be reliable; however, a prospective purchaser or lessee is expected to verify all information to their own satisfaction.

900 SW 5th Avenue • 17th Floor • Portland, OR 97204
503.223.3171 • norris-stevens.com

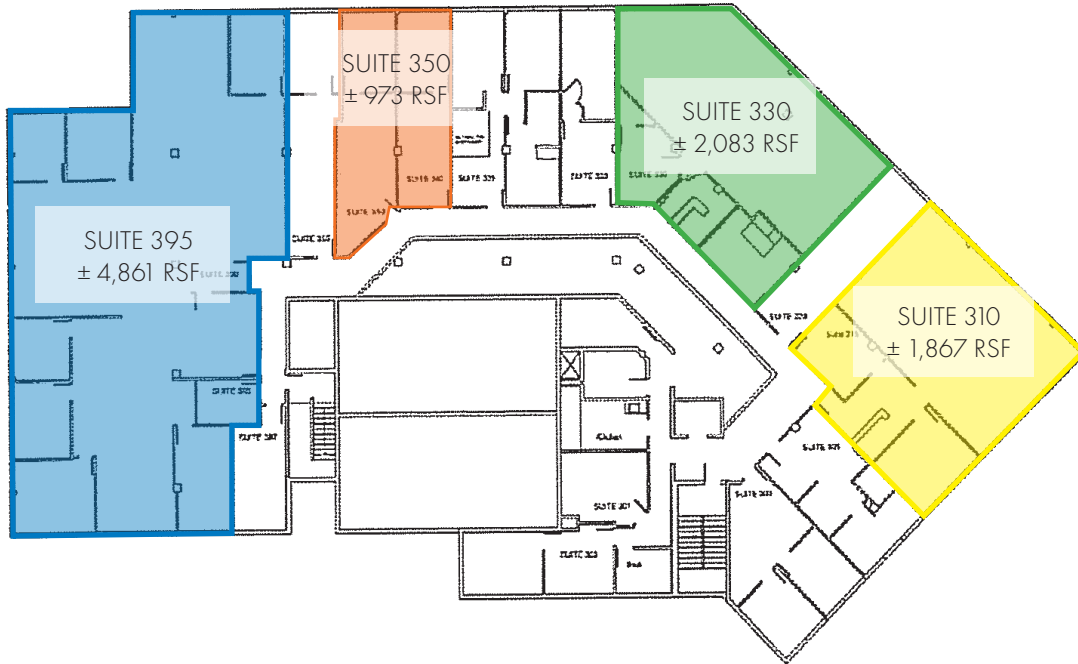
HAYDEN ISLAND PLAZA

700 N Hayden Island Drive | Portland OR 97217

FOR LEASE

FLOOR PLANS

THIRD FLOOR PLAN



For more information or a property tour, please contact:

DOUG CARTER

503.225.8499

DougC@norris-stevens.com

Norris & Stevens

INVESTMENT REAL ESTATE SERVICES



Information contained herein has been obtained from others and considered to be reliable; however, a prospective purchaser or lessee is expected to verify all information to their own satisfaction.

900 SW 5th Avenue • 17th Floor • Portland, OR 97204
503.223.3171 • norris-stevens.com