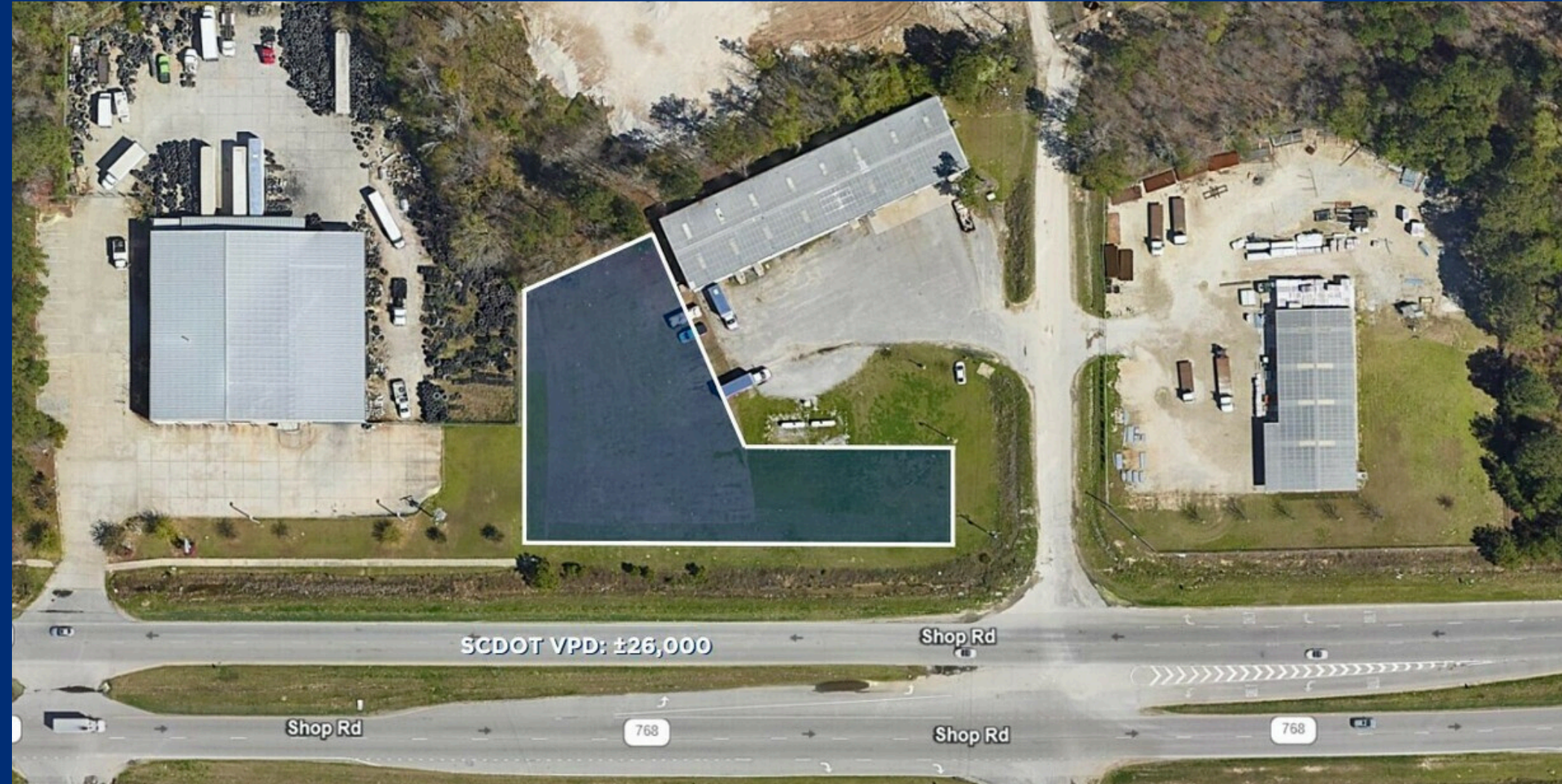


FOR LEASE

±0.93 AC Fenced Laydown Yard



2651 Shop Road
Columbia, SC 29209



Bryan Kingrey
803-466-9621
bkingrey@reedypg.com

2651 Shop Road

Columbia, SC 29209

Property Highlights

- Fully fenced laydown yard
- Ideal for trailer parking and outside storage
- 350' of Road Frontage
- Traffic Count: $\pm 26,000$ VPD on Shop Road
- Possibility to Lease Warehouse on property

Location Highlights

- $\pm 1/2$ mile from I-77
- ± 7 miles from I-26
- ± 11 miles from Downtown Columbia
- ± 15 miles from Columbia Metropolitan Airport

Offering Summary

Lease Rate \$2,500/month

Lease Term: Negotiable

Acreage, taxes, utilities and lot dimensions to be verified by Buyer and/or Buyers agent

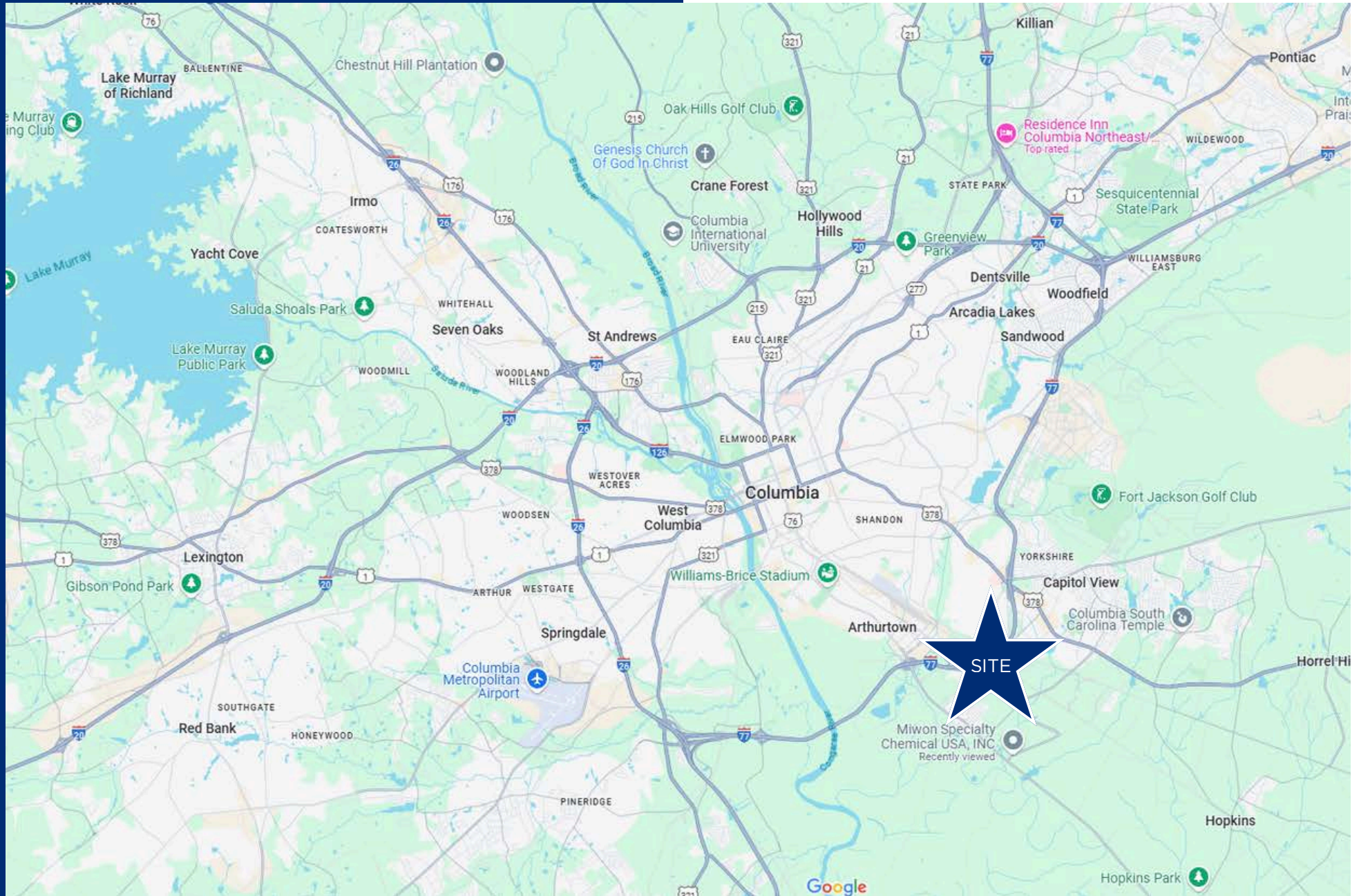


Property Photo

2651 Shop Road | Columbia, SC 29209

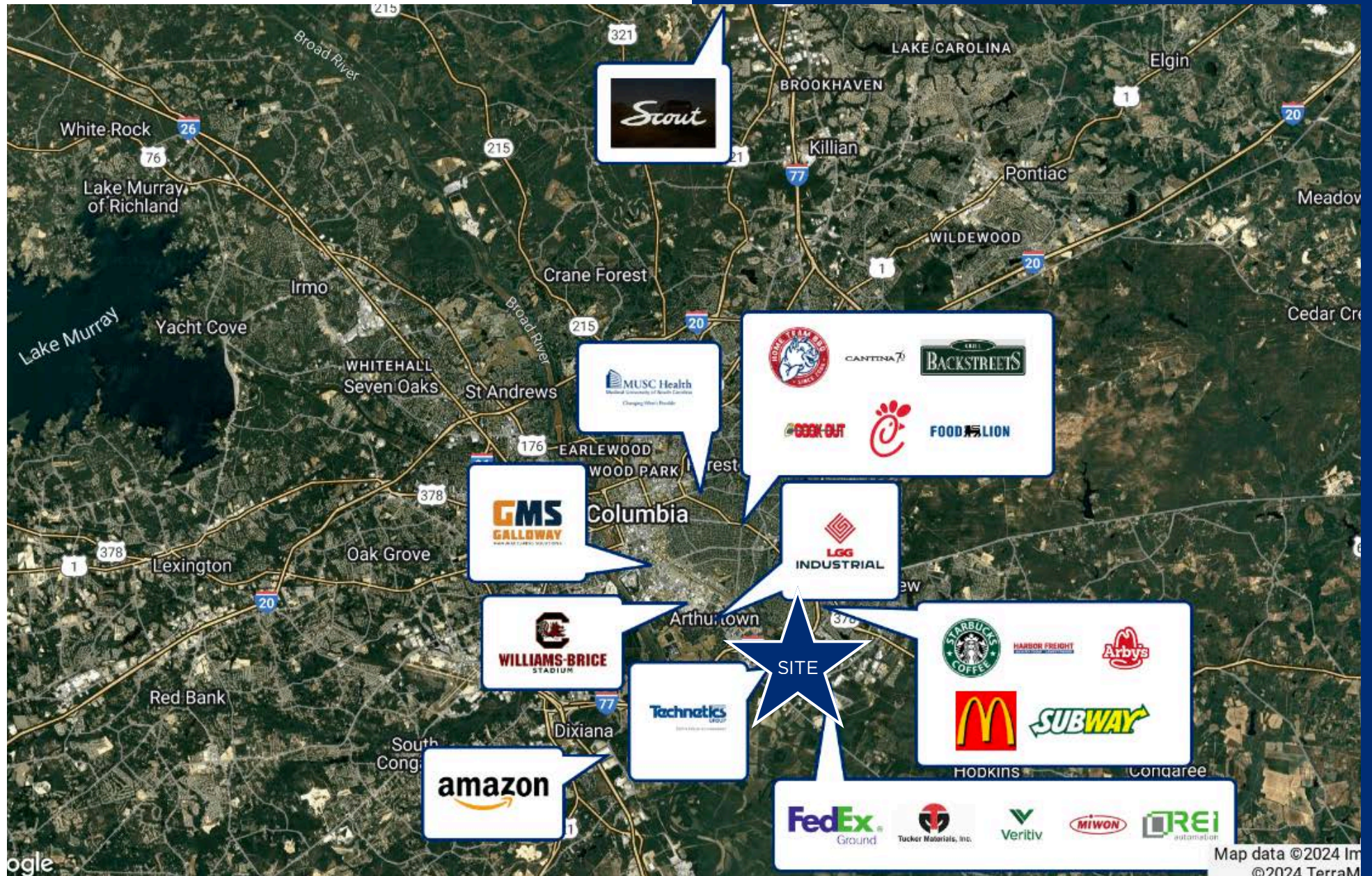


Aerial Map Columbia, SC



Local Amenities and Retailers

Columbia, SC



Contact Information

Reedy Commercial

WE KNOW THE MARKET BECAUSE WE'RE INVESTED HERE TOO

At Reedy Commercial, we care about the why behind a commercial property as much as the what.

That's because we believe resilient communities, and portfolios that weather any market, start with people who have a vision beyond a quick profit.

Our network is as valuable as our net worth because this is our market, too.

We're invested in every asset class of commercial real estate right where our roots run deepest. That's how we uncover powerful investments in unexpected locations that yield incredible returns. It's why our clients trust us over the latest trends. And, it's what ignites our deepest passion - turning real estate investments into legacies.

Bryan Kingrey

803-466-9621

bkingrey@reedy.com

