

# Rare Opportunity in Premier Park City Office



## Newpark One

1441 Ute Boulevard  
Park City, UT 84098

**Space Available:** 2,270 SF on Floor 2

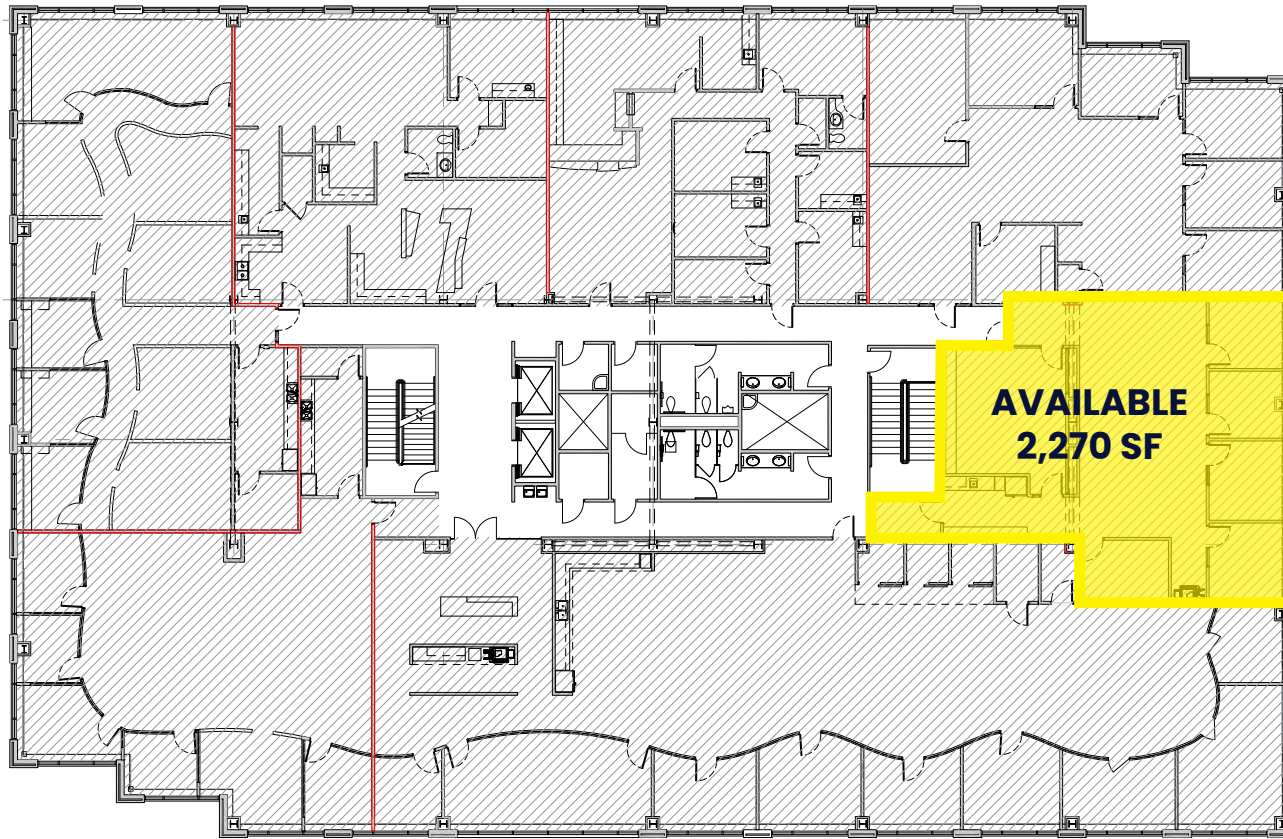
**Asking Rent & TI Allowance:** Upon Request

**Parking Ratio:** 3.5/1,000 SF

- + Rare availability in premier, Class A office building, recognized as one of Park City's most exclusive and prestigious properties
- + Tenancy features a blend of national and regional Tenants including Morgan Stanley, Western Steel, and Wells Fargo Advisors
- + Prime location within Newpark Town Center, walkable to countless amenities, including restaurants, entertainment, shops and lodging, as well as walking and biking trails



# Floor 2 | Floor Plan







**CONTACT**

**Jenny Taumoepeau**

801 910 9432

[jenny@fortstreetpartners.com](mailto:jenny@fortstreetpartners.com)



**FORT STREET  
PARTNERS**