

SPACE CENTER EXECUTIVE PARK

KANSAS CITY
JACKSON COUNTY

1500 W Geospace Drive
Independence, Missouri 64056

UNIT 3201E

FOR LEASE

Available Size
155,000 SF

Restrooms
2

Office
850 SF

Lease Rate
Contact

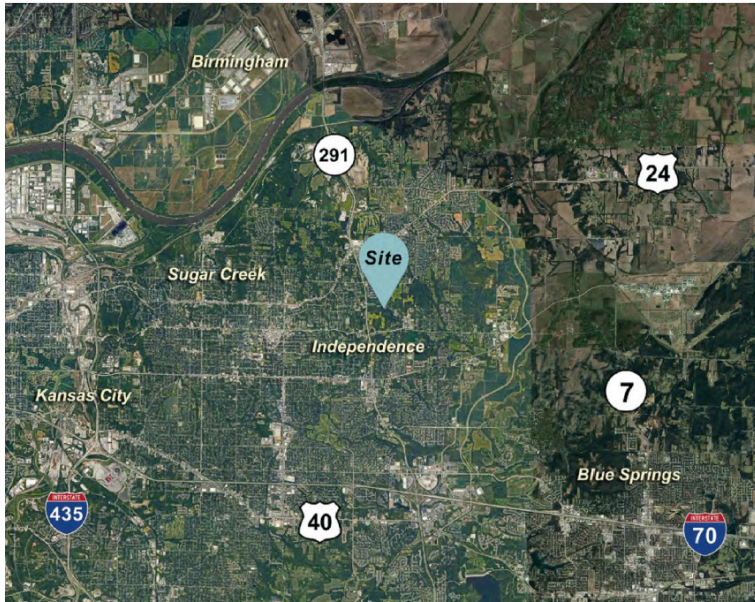
Clear Height
Average 15'

Estimated Taxes, Insurance, CAM
\$0.94/SF

Loading Doors
16 Dock-High Doors

Power
100 amp 120/208
200 amp 277/480

Drive-In Doors
2 Drive-In Doors



Additional Information

- Over 160 acres within a carved-out limestone rock formation
- Ideal for office, warehousing, manufacturing and logistics
- Proximity to 291 Hwy, I-70 and I-435
- Favorable tax base with lower rents and utilities
- Low humidity and 65 degree standard temperature year-round
- Fitted with state-of-the-art fire detection and suppression equipment

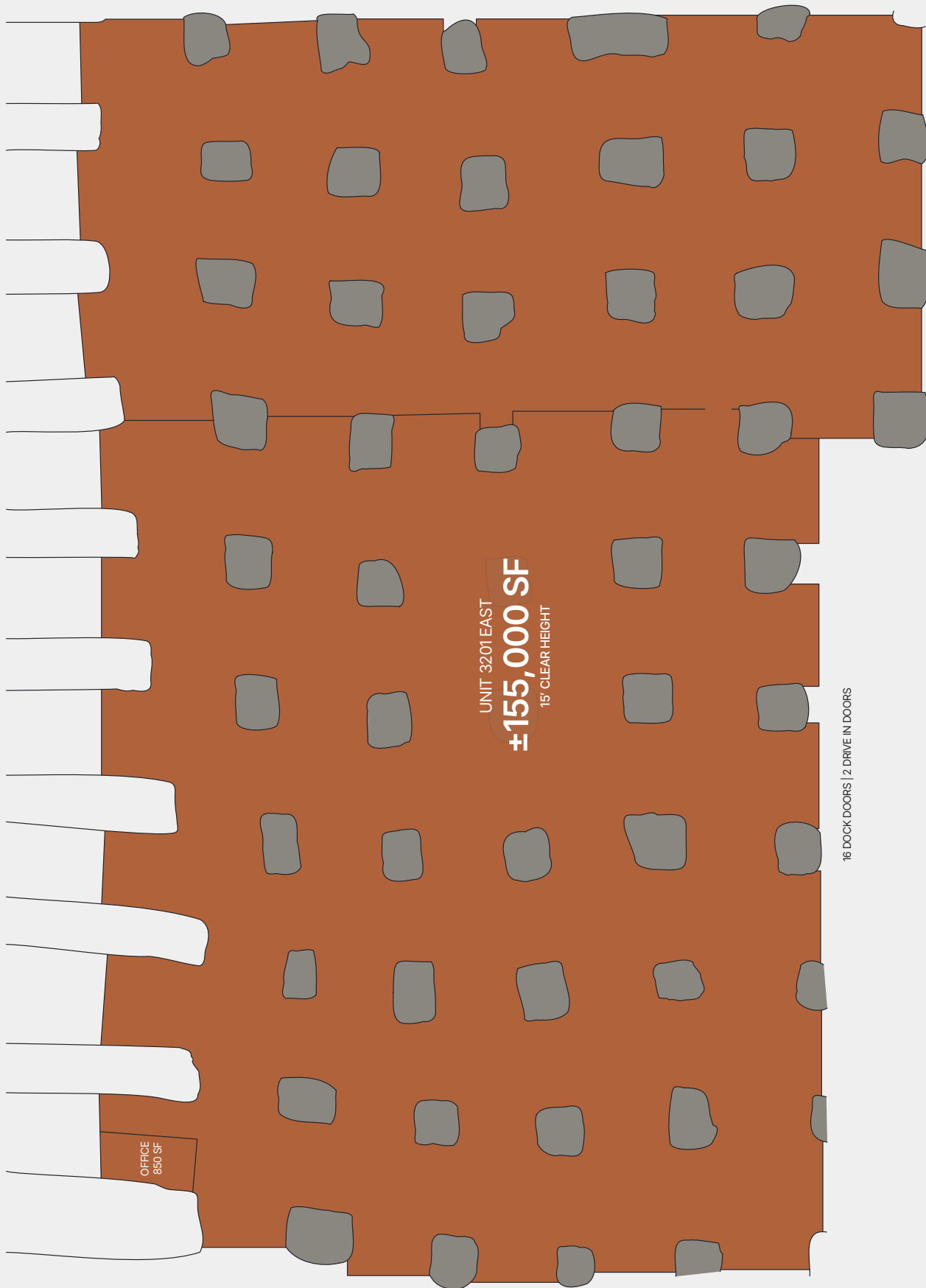
Seamus M. McLaughlin
smclaughlin@nzimmer.com
(816) 268-4223

Mark C. Long
mlong@nzimmer.com
(816) 512-1011

John F. Hassler
jhassler@nzimmer.com
(816) 268-4208



LEASED BY **NEWMARK ZIMMER**



OFFICE
850 SF

UNIT 3201 EAST
±155,000 SF
15' CLEAR HEIGHT

16 DOCK DOORS | 2 DRIVE IN DOORS