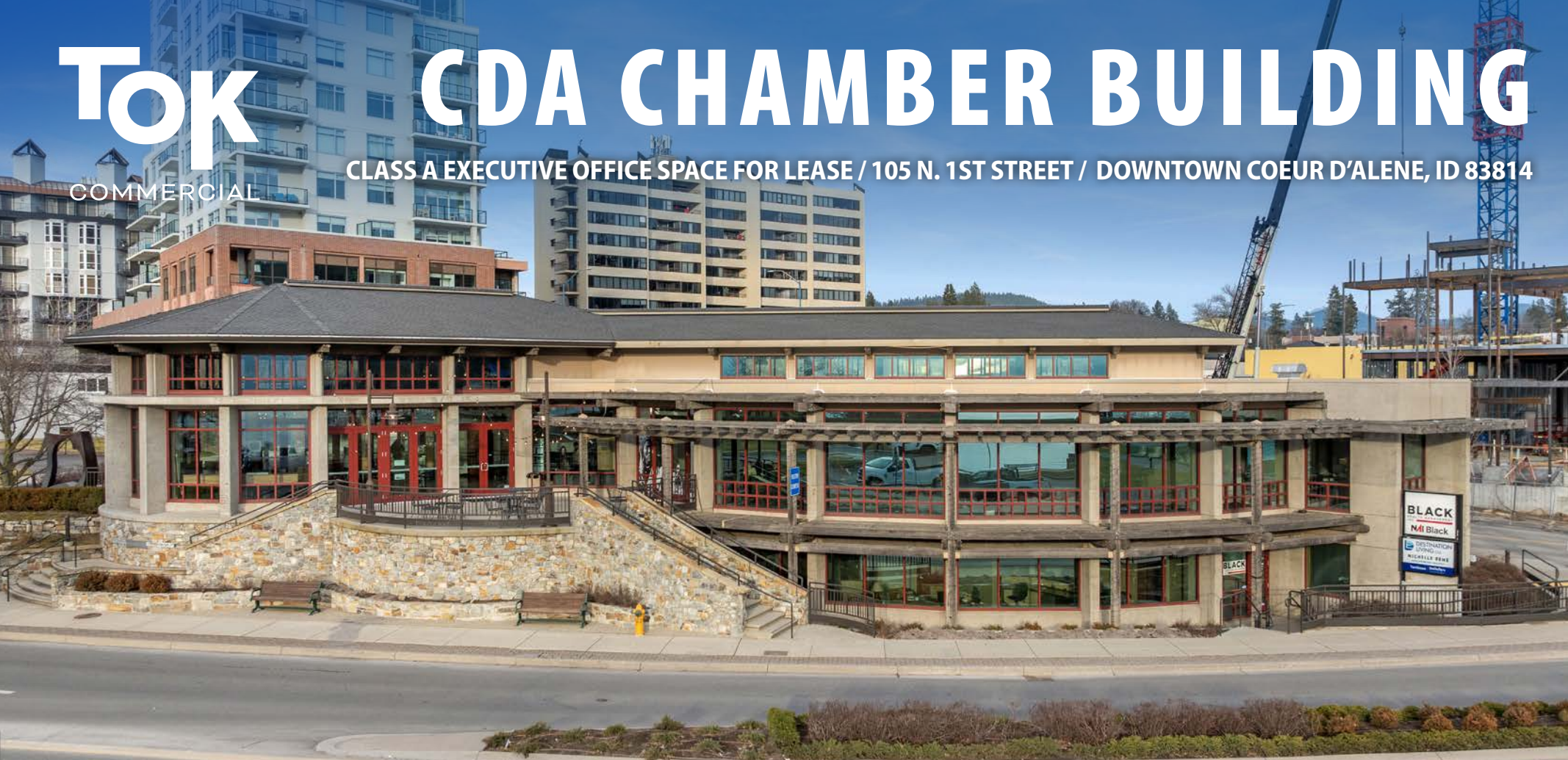


# TOK

COMMERCIAL

# CDA CHAMBER BUILDING

CLASS A EXECUTIVE OFFICE SPACE FOR LEASE / 105 N. 1ST STREET / DOWNTOWN COEUR D'ALENE, ID 83814



## CONTACT

**DANNY DAVIS, CCIM**

208.691.6003

danny@tokcommercial.com

## HIGHLIGHTS

Offering executive private offices, individual workstations, and suites up to 874SF.

Prime downtown Coeur d'Alene location directly on Sherman Avenue across the street from Lake Coeur d'Alene.

Walkable access to restaurants, retail, parks, beaches, and downtown services.

Networking opportunities to grow your business in the heart of the business community.

Office suites ideal for solo practitioners, small teams, and remote professionals.

## DETAILS

|                        |                 |
|------------------------|-----------------|
| <b>SUBMARKET</b>       | Downtown CDA    |
| <b>BLDG SIZE</b>       | 13,585 SF       |
| <b>SPACE AVAILABLE</b> | See Pages 2 & 3 |
| <b>LEASE TYPE</b>      | Full Service    |
| <b>LEASE TERM</b>      | 1 Year Minimum  |
| <b>AVAILABLE</b>       | Immediately     |

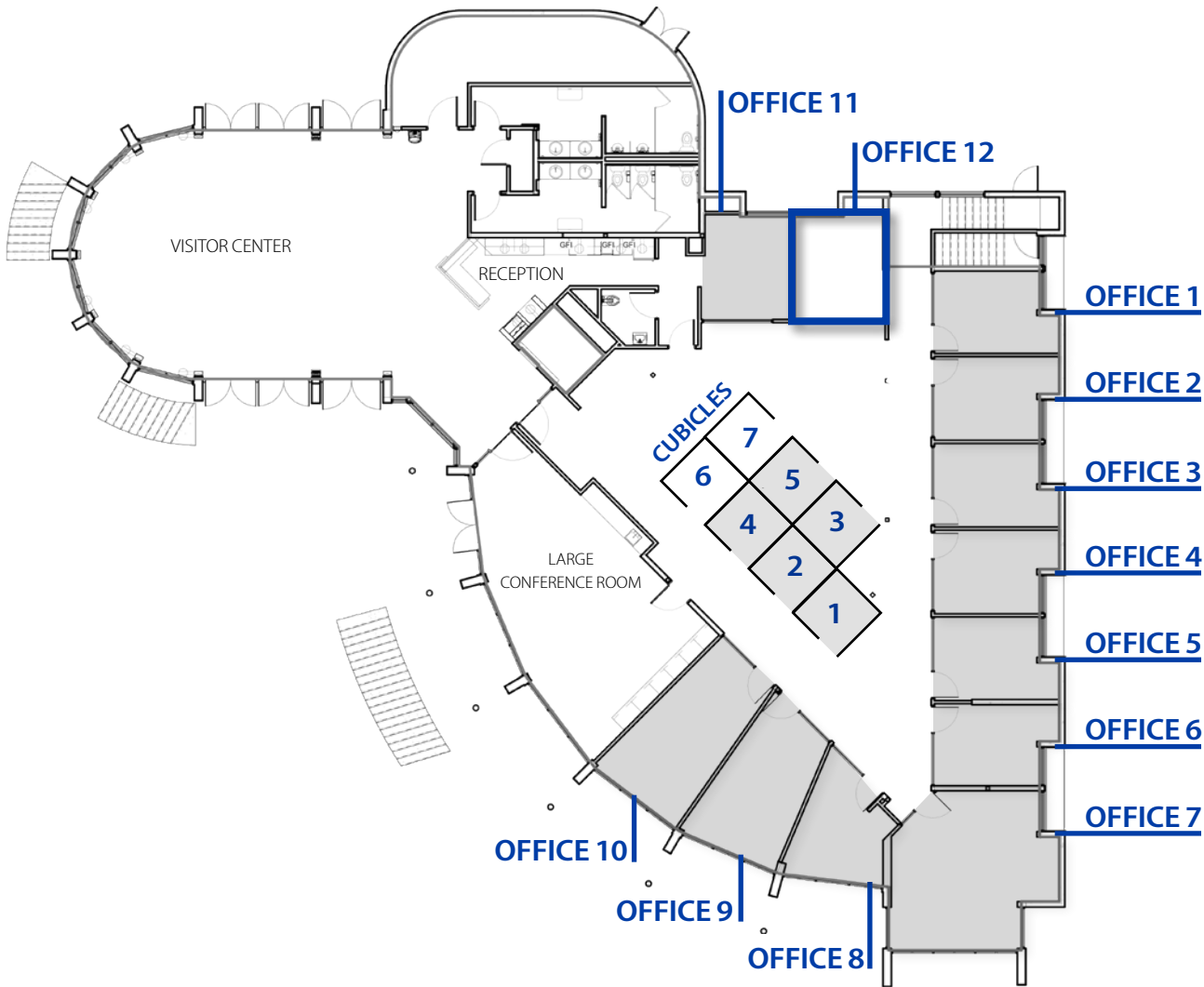
UPDATED: 4.14.2026

THIS PROPERTY IS EXCLUSIVELY MARKETED BY TOK BOISE LLC DBA TOK COMMERCIAL

This information was obtained from sources believed reliable but cannot be guaranteed. Any opinions or estimates are used for example only.

**TOK**COMMERCIAL.COM

**MAIN FLOOR**

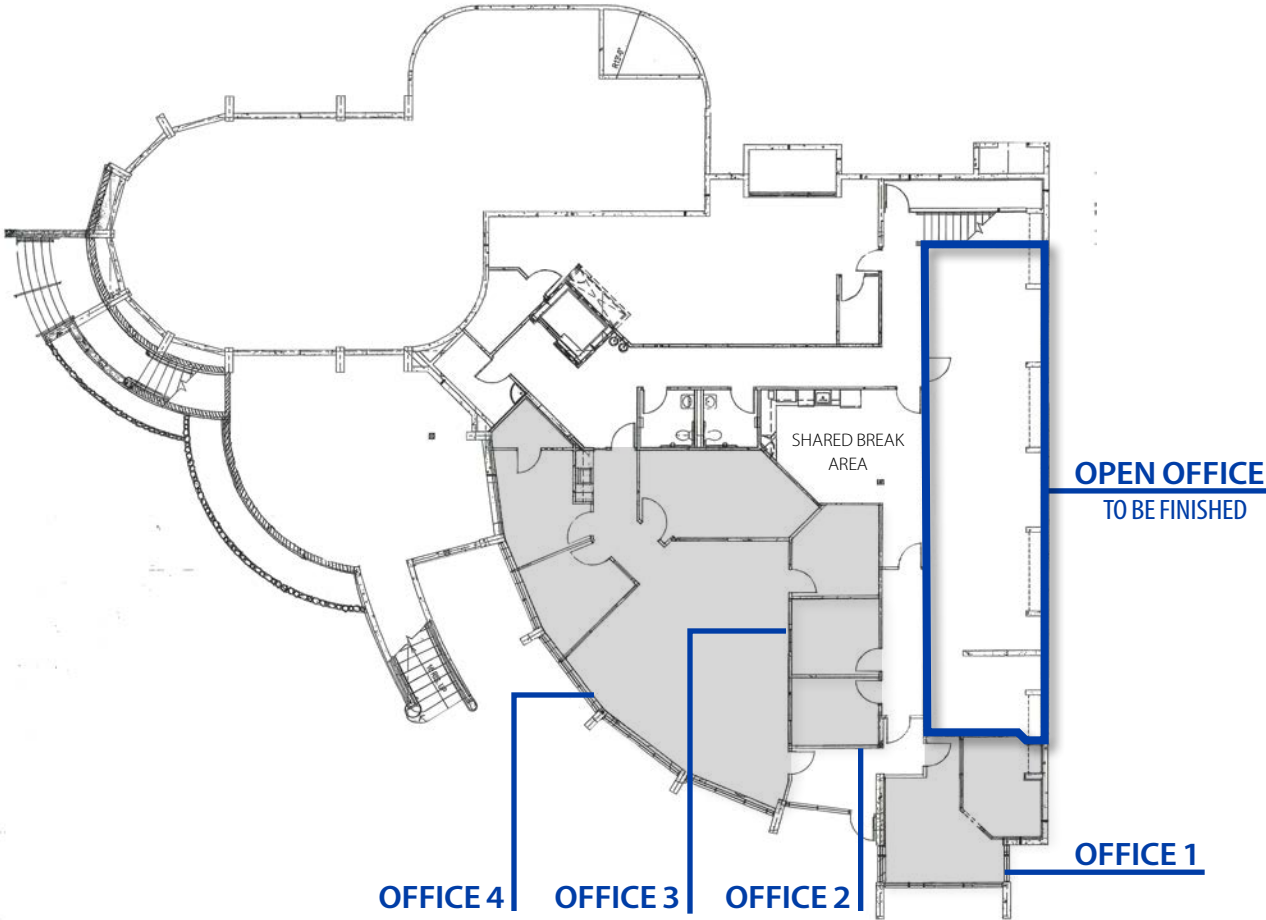


| SPACE     | SIZE   | RATE                                     |
|-----------|--------|--|
| Office 1  | 120 SF | Marco Law Group                          |
| Office 2  | 120 SF | Growth Advisors & Tax Consultants        |
| Office 3  | 120 SF | CDA Visitors and Convention Bureau       |
| Office 4  | 120 SF | CDA Chamber                              |
| Office 5  | 120 SF | CDA Chamber                              |
| Office 6  | 120 SF | North Idaho Centennial Trials Foundation |
| Office 7  | 300 SF | CDA Chamber                              |
| Office 8  | 120 SF | CDA Downtown Association                 |
| Office 9  | 175 SF | Innova Foundation                        |
| Office 10 | 200 SF | Urban Renewal Agency                     |
| Office 11 | 150 SF | CDA Chamber                              |
| Office 12 | 146 SF | \$1,022/Mo                               |
| Cubicle 1 | 64 SF  | CDA Chamber                              |
| Cubicle 2 | 63 SF  | M+L Advisors                             |
| Cubicle 3 | 64 SF  | CDA Downtown Association                 |
| Cubicle 4 | 63 SF  | CDA Downtown Association                 |
| Cubicle 5 | 96 SF  | CDA Downtown Association                 |
| Cubicle 6 | 96 SF  | \$288/Mo                                 |
| Cubicle 7 | 60 SF  | \$180/Mo                                 |

**DETAILS**

UPDATED: 4.14.2026  
 THIS PROPERTY IS EXCLUSIVELY MARKETED BY TOK BOISE LLC DBA TOK COMMERCIAL  
 This information was obtained from sources believed reliable but cannot be guaranteed. Any opinions or estimates are used for example only.

**LOWER LEVEL**



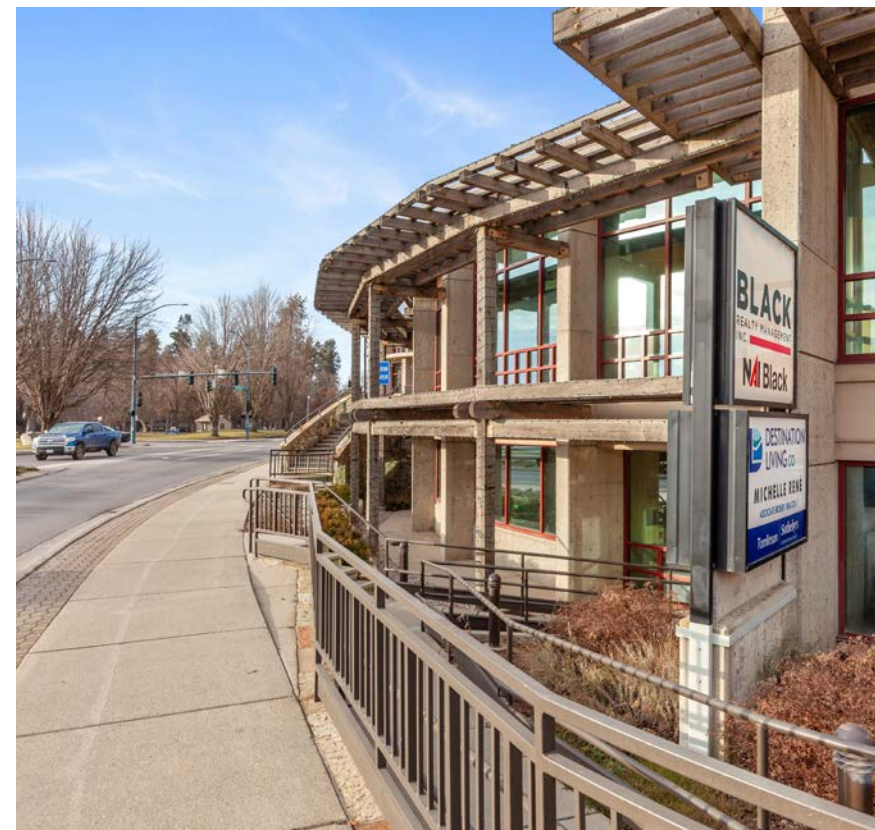
**DETAILS**

| SPACE                     | SIZE     | RATE                      |
|---------------------------|----------|---------------------------|
| Office 1 (Lower Level)    | 316 SF   | Lake City CDA Real Estate |
| Office 2 (Lower Level)    | 96 SF    | Swoop Scoop               |
| Office 3 (Lower Level)    | 106 SF   | Swoop Scoop               |
| Office 4 (Lower Level)    | 1,407 SF | Swoop Scoop               |
| Open Office (Lower Level) | 874 SF   | \$2,185/Mo                |

UPDATED: 4.14.2026

THIS PROPERTY IS EXCLUSIVELY MARKETED BY TOK BOISE LLC DBA TOK COMMERCIAL

This information was obtained from sources believed reliable but cannot be guaranteed. Any opinions or estimates are used for example only.



UPDATED: 4.14.2026

THIS PROPERTY IS EXCLUSIVELY MARKETED BY TOK BOISE LLC DBA TOK COMMERCIAL

This information was obtained from sources believed reliable but cannot be guaranteed. Any opinions or estimates are used for example only.

**MAIN LEVEL**



**MAIN LEVEL - CUBICLE**



**MAIN LEVEL - CUBICLE**



**MAIN LEVEL - OFFICE SPACE**



**TOK**  
COMMERCIAL

**UPDATED: 4.14.2026**

THIS PROPERTY IS EXCLUSIVELY MARKETED BY TOK BOISE LLC DBA TOK COMMERCIAL

This information was obtained from sources believed reliable but cannot be guaranteed. Any opinions or estimates are used for example only.

**TOK**COMMERCIAL.COM

## MAIN LEVEL - OFFICE SPACE



## MAIN LEVEL - RECEPTION



## SHARED BREAK AREA



## SHARED BREAK AREA



**TOK**  
COMMERCIAL

UPDATED: 4.14.2026

THIS PROPERTY IS EXCLUSIVELY MARKETING BY TOK BOISE LLC DBA TOK COMMERCIAL

This information was obtained from sources believed reliable but cannot be guaranteed. Any opinions or estimates are used for example only.

**TOK**COMMERCIAL.COM



**COMPLETE TI BUILDOUT AVAILABLE | 874 SF**  
APPROVED TENANTS WITH 5 YEAR MINIMUM LEASE - CONTACT AGENT FOR MORE DETAILS

UPDATED: 4.14.2026

THIS PROPERTY IS EXCLUSIVELY MARKETED BY TOK BOISE LLC DBA TOK COMMERCIAL

This information was obtained from sources believed reliable but cannot be guaranteed. Any opinions or estimates are used for example only.



UPDATED: 4.14.2026

THIS PROPERTY IS EXCLUSIVELY MARKETED BY TOK BOISE LLC DBA TOK COMMERCIAL

This information was obtained from sources believed reliable but cannot be guaranteed. Any opinions or estimates are used for example only.

TOKCOMMERCIAL.COM



LAKE COEUR D'ALENE

SHERMAN AVE

COEUR D'ALENE AVE

SITE

18,749 VPD

CITY PARK

NORTHWEST BLVD

TOK COMMERCIAL

UPDATED: 4.14.2026  
THIS PROPERTY IS EXCLUSIVELY MARKETED BY TOK BOISE LLC DBA TOK COMMERCIAL  
This information was obtained from sources believed reliable but cannot be guaranteed. Any opinions or estimates are used for example only.

TOKCOMMERCIAL.COM

