



PRESTIGE PARK - PHASE II



874 W. Lanier Avenue | Fayetteville, GA 30214

FOR LEASE MEDICAL OFFICE SPACE

SPACE AVAILABLE | 1,602 - 4,354 SF **LEASING RATE** | Negotiable

HIGHLIGHTS

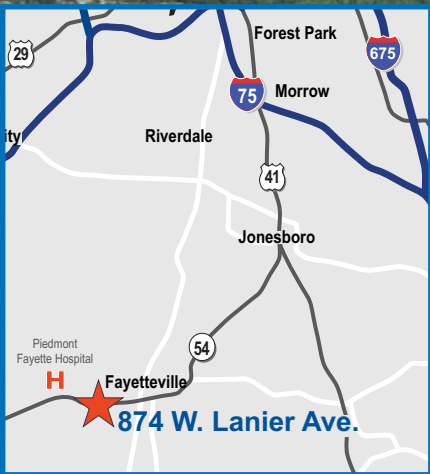
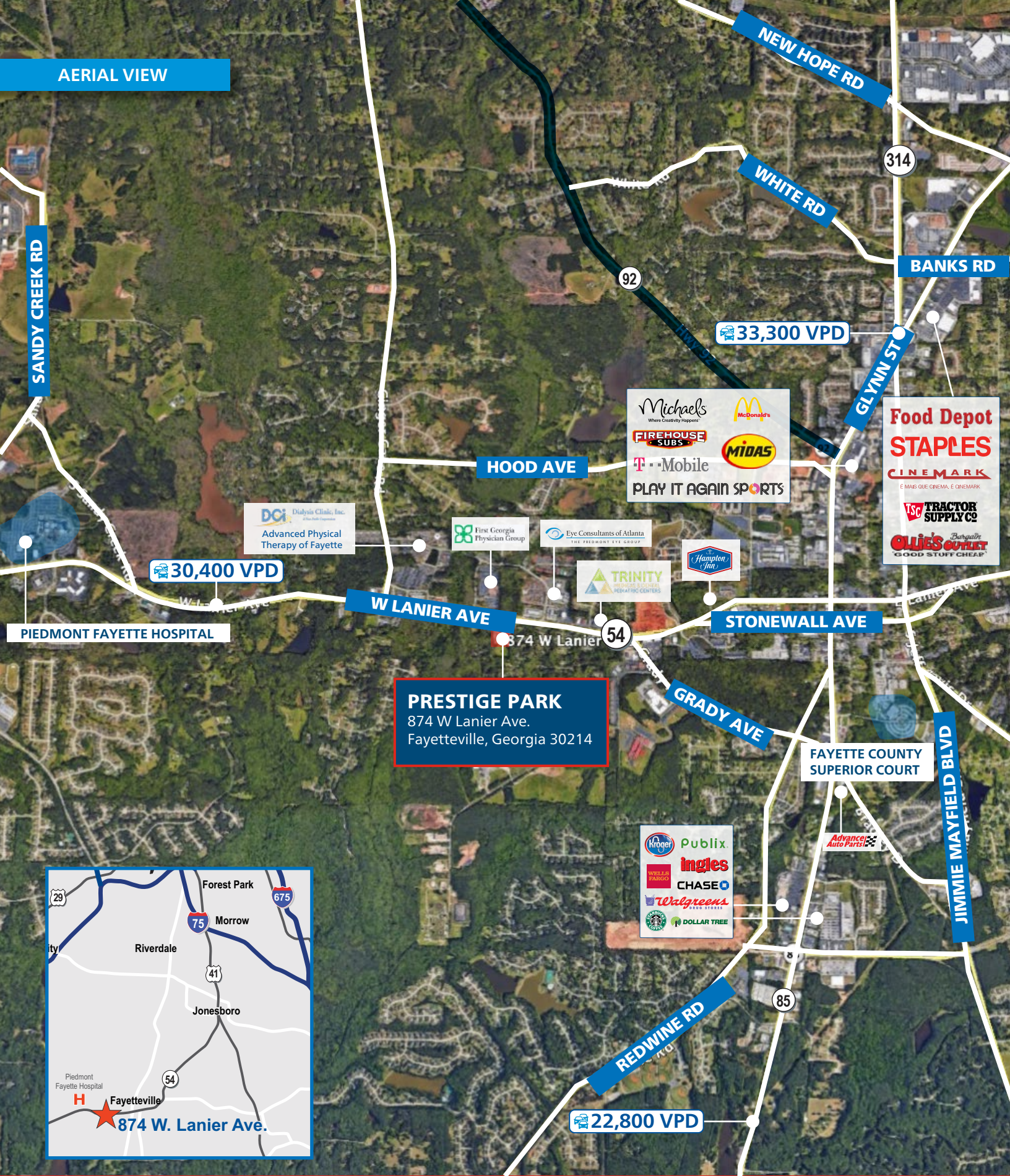
- Class A medical building
- Built out clinical space
- New owner
- Surface parking
- Abundant parking 5/1000 ratio
- No hospital restrictions
- Covered patient drop-off areas
- Move-in ready space
- Close to Piedmont Fayette Hospital
- Multiple points of ingress and egress

KEVIN EHRINGER | 770.913.3960 | kehringer@ackermanco.net

©2020 Ackerman & Co. All rights reserved. While we have no reason to doubt the accuracy of the information provided from sources we deem reliable, we cannot guarantee it and therefore assume no liability for errors, omissions or changes to this content.

Ackerman  Medical
www.ackermanmedical.com

AERIAL VIEW



KEVIN EHRINGER | 770.913.3960 | kehringer@ackermanco.net

Ackerman  Medical

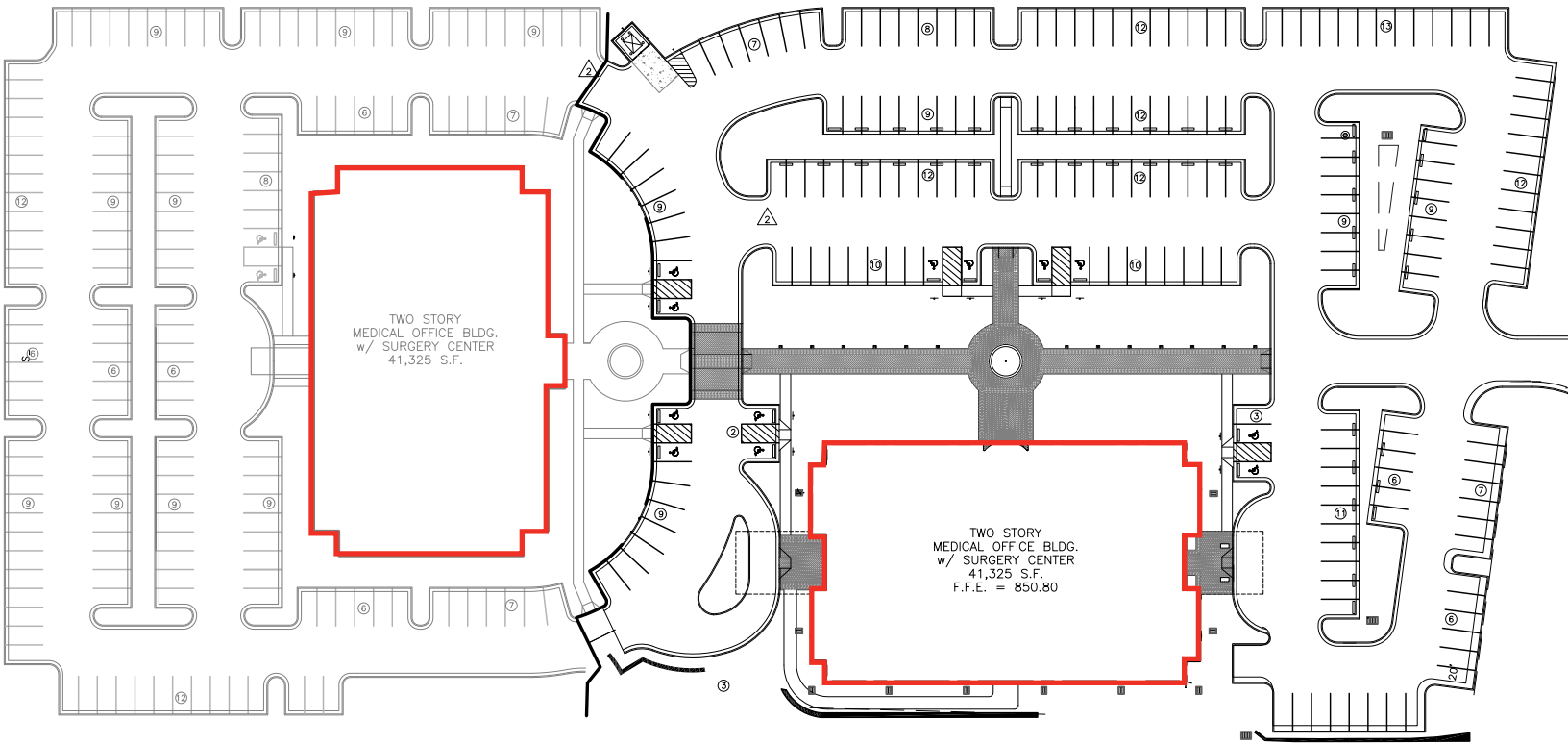
©2020 Ackerman & Co. All rights reserved. While we have no reason to doubt the accuracy of the information provided from sources we deem reliable, we cannot guarantee it and therefore assume no liability for errors, omissions or changes to this content.

www.ackermanmedical.com

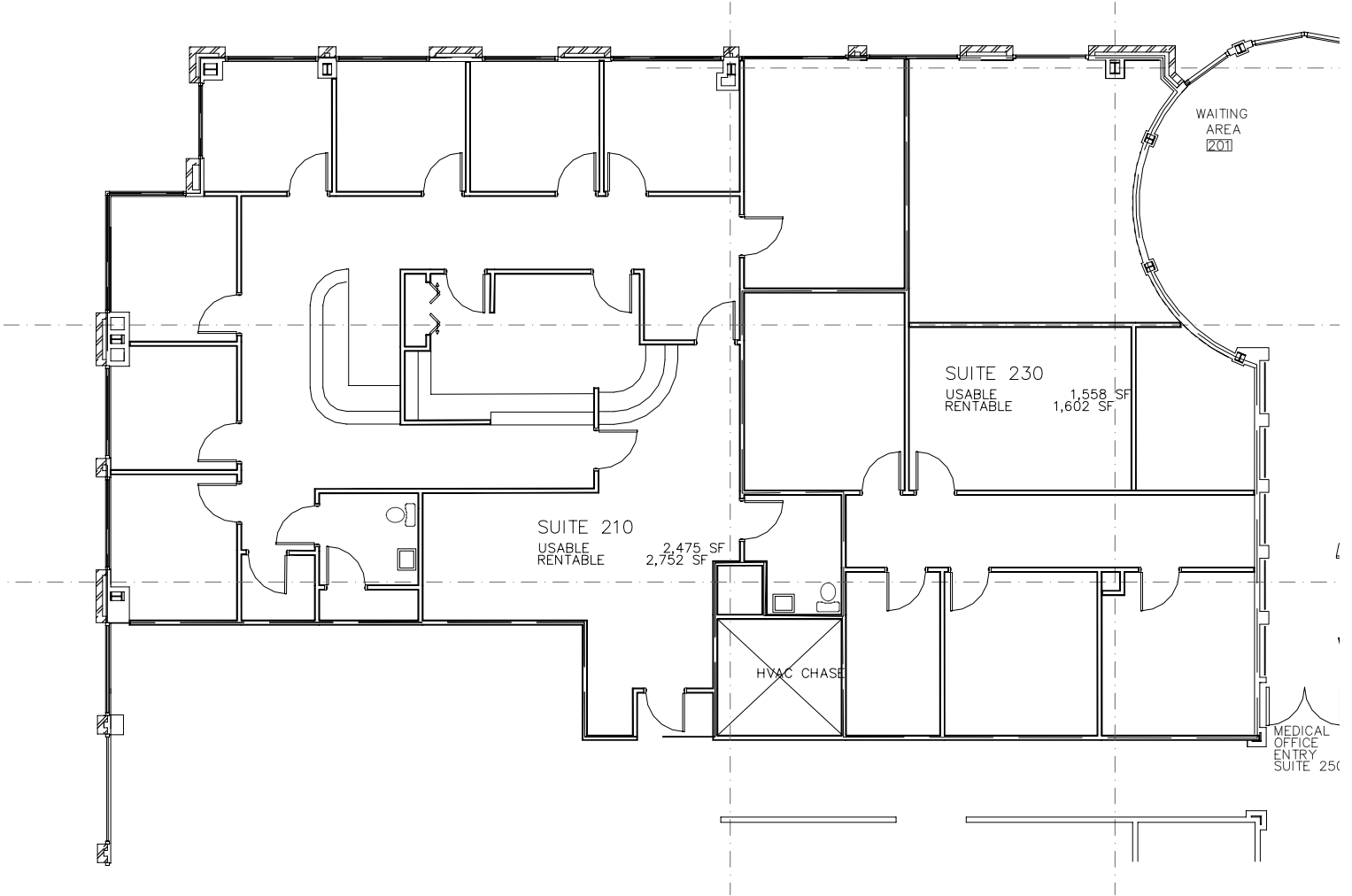
Available Space

Building I 1,602 - 4,354 SF

Building II Up to 40,000 SF



FLOOR PLAN - SECOND LEVEL



PROPERTY PHOTOS



KEVIN EHRINGER | 770.913.3960 | kehringer@ackermanco.net

Ackerman  Medical

www.ackermanmedical.com

©2020 Ackerman & Co. All rights reserved. While we have no reason to doubt the accuracy of the information provided from sources we deem reliable, we cannot guarantee it and therefore assume no liability for errors, omissions or changes to this content.