

SHOPPES AT 515

515 S DUPONT
HIGHWAY

8,050 +/- SF
PROFESSIONAL
RETAIL SPACE



R & R COMMERCIAL REALTY

46 SOUTH STATE STREET
DOVER, DE 19901

WWW.RANDRCOMMERCIALREALTY.COM

LARRY THOMPSON

(302) 674-3400 OFFICE
(302) 270-1186 CELL
LTHOMP3682@GMAIL.COM

OVERVIEW

PROPERTY HIGHLIGHTS

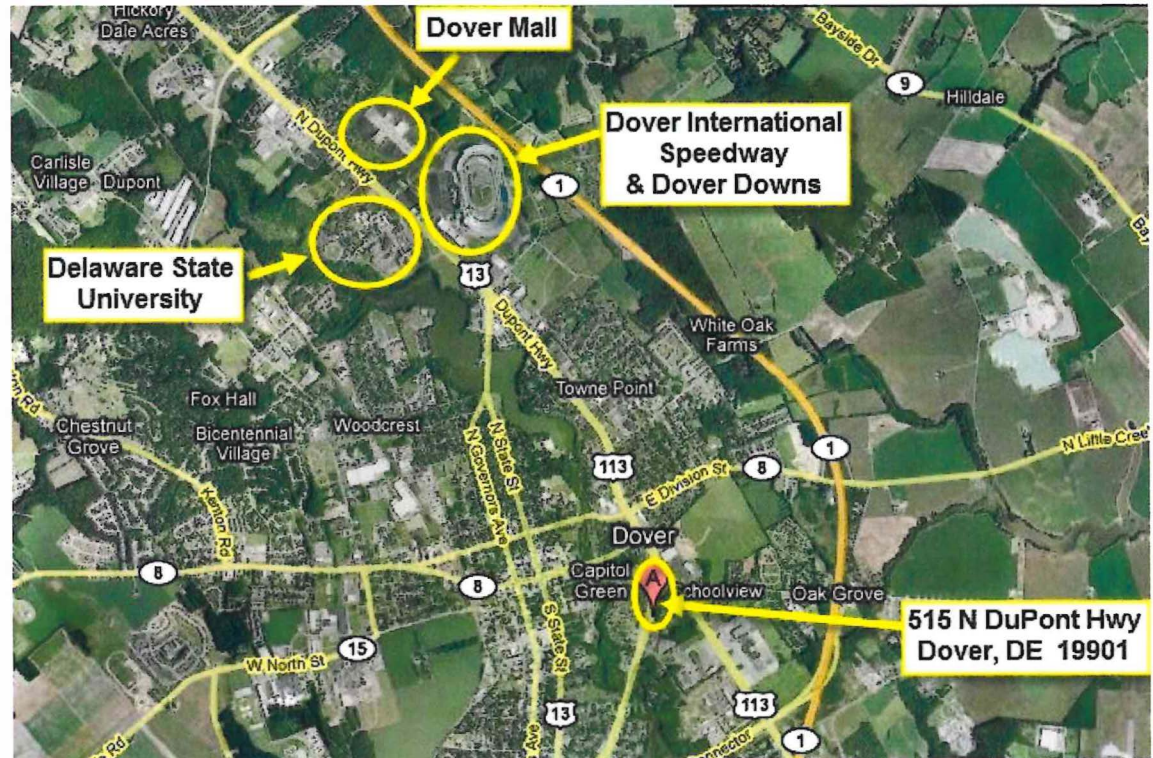
New Construction
Zoned: C4
Parking on Site
0.86 +/- Acre Lot

PROPERTY SUMMARY

- Sale Price : \$2,700,000
- Total SF: 8,050 +/- SF
- Kent County Sewer, Water, & Electric
- Chesapeake Utilities Gas

LOCATION HIGHLIGHTS

- Great Visibility on Route 13
- Close Proximity to Bayhealth Hospital
- Easy Access to Major Area Highways
- Near Dover Air Force Base



R & R COMMERCIAL REALTY

46 SOUTH STATE STREET
DOVER, DE 19901

WWW.RANDRCOMMERCIALREALTY.COM

LARRY THOMPSON

(302) 674-3400 OFFICE
(302) 270-1186 CELL
LTHOMP3682@GMAIL.COM



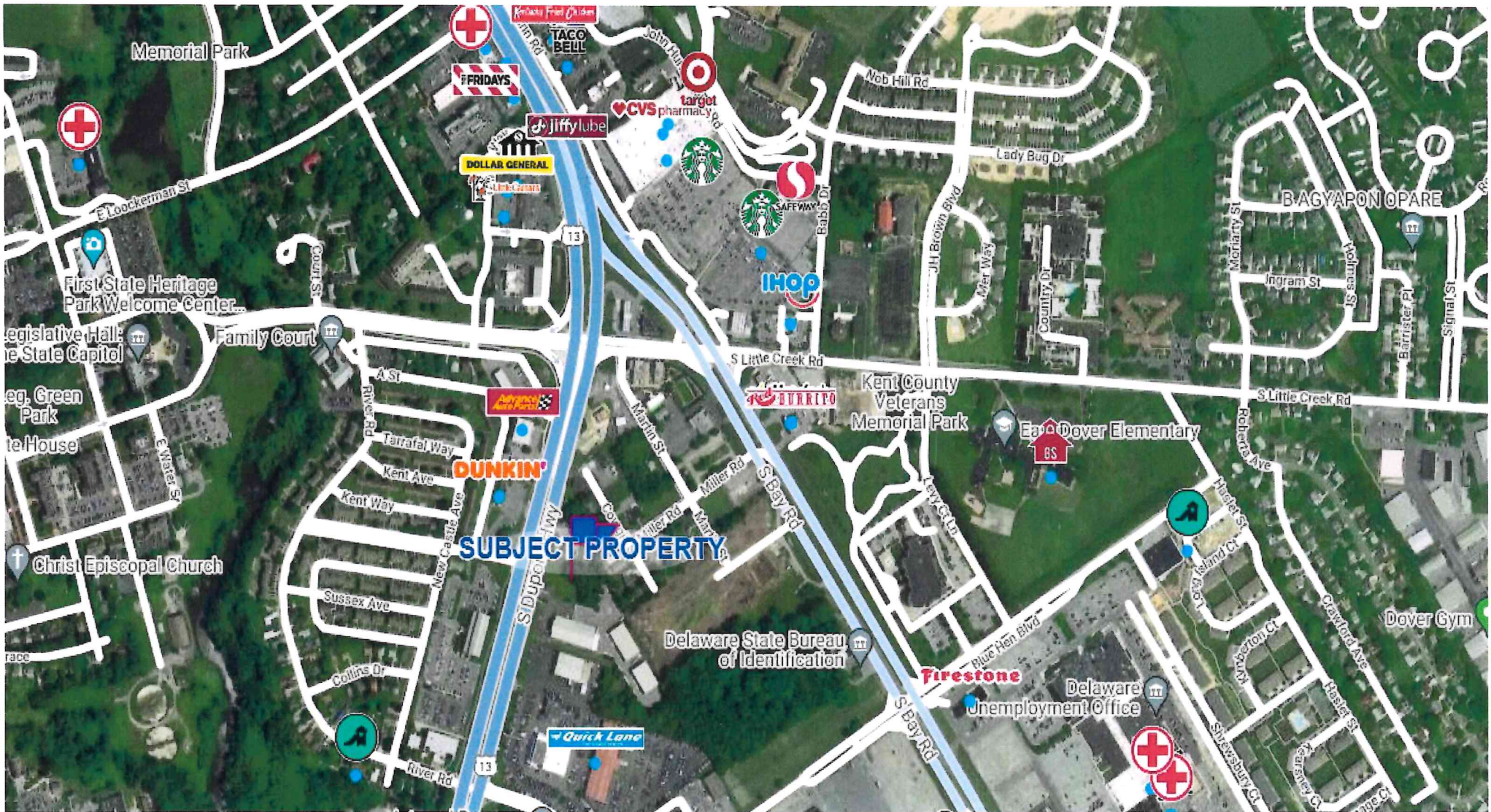
R & R COMMERCIAL REALTY

46 SOUTH STATE STREET
DOVER, DE 19901

WWW.RANDRCOMMERCIALREALTY.COM

LARRY THOMPSON

(302) 674-3400 OFFICE
(302) 270-1186 CELL
LTHOMP3682@GMAIL.COM



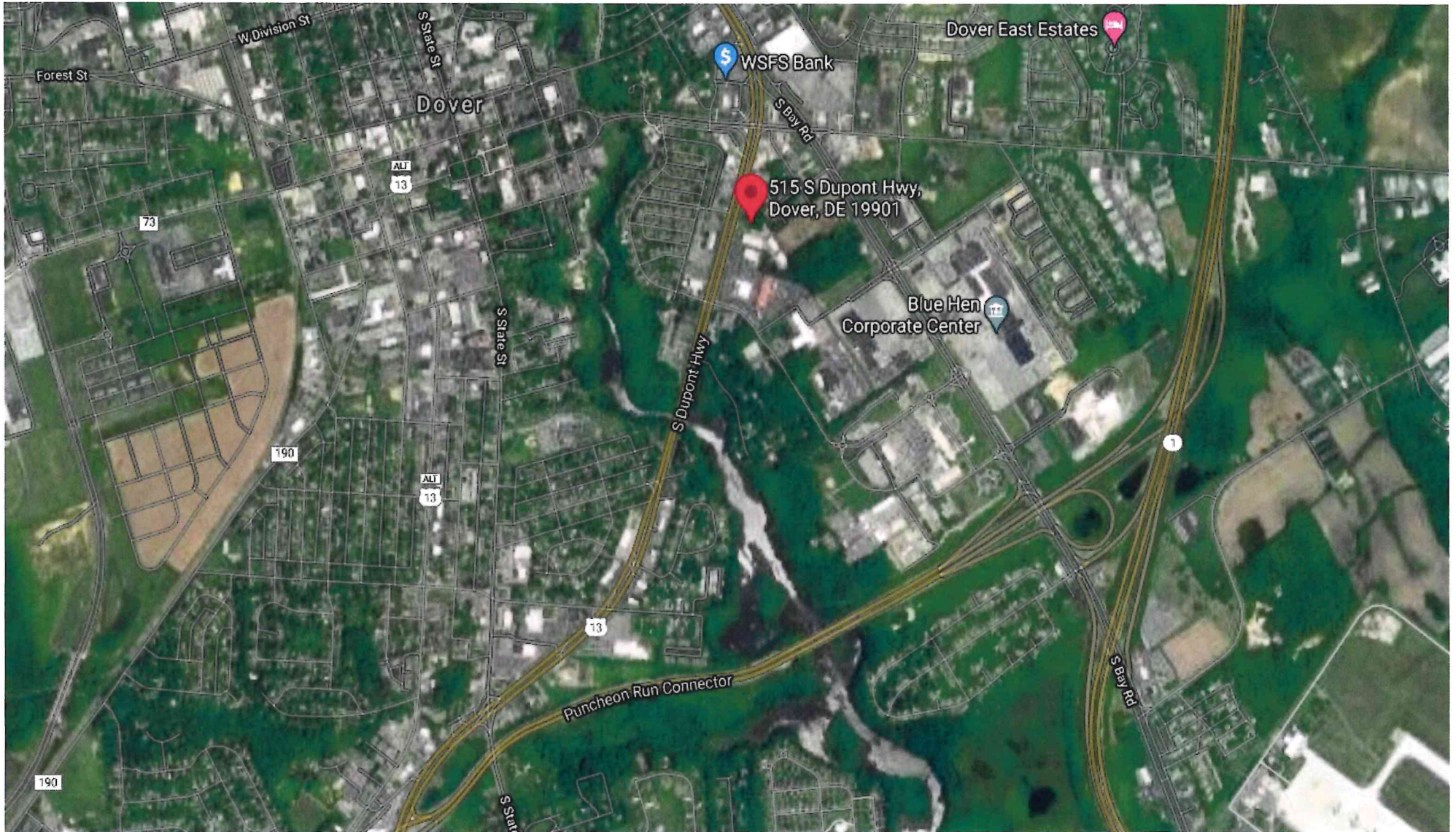
R & R COMMERCIAL REALTY

46 SOUTH STATE STREET
DOVER, DE 19901

WWW.RANDRCOMMERCIALREALTY.COM

LARRY THOMPSON

(302) 674-3400 OFFICE
(302) 270-1186 CELL
LTHOMP3682@GMAIL.COM



R & R COMMERCIAL REALTY

46 SOUTH STATE STREET
DOVER, DE 19901

WWW.RANDRCOMMERCIALREALTY.COM

LARRY THOMPSON

(302) 674-3400 OFFICE
(302) 270-1186 CELL
LTHOMP3682@GMAIL.COM