



**Rexford  
Industrial**



**For Lease**

**10700 Jersey Blvd**

**RANCHO CUCAMONGA, CALIFORNIA**

### **Multi-Tenant Industrial Building**

- Highly Desirable Warehouse & Office Units From 864 SF to 2,900 SF
- FIOS Internet Available
- Fully Sprinklered
- 16' Clear Height
- Ground Level Loading Doors
- Access to Interstate 10, 15, and 210 Freeways

### **For Information, Contact:**

**DANYEIL STALLWORTH**

424-256-2129

[Dstallworth@rexfordindustrial.com](mailto:Dstallworth@rexfordindustrial.com)

CA License #01990196

**ALEXANDRIA PIRRITANO**

424-243-7771

[Apirritano@rexfordindustrial.com](mailto:Apirritano@rexfordindustrial.com)

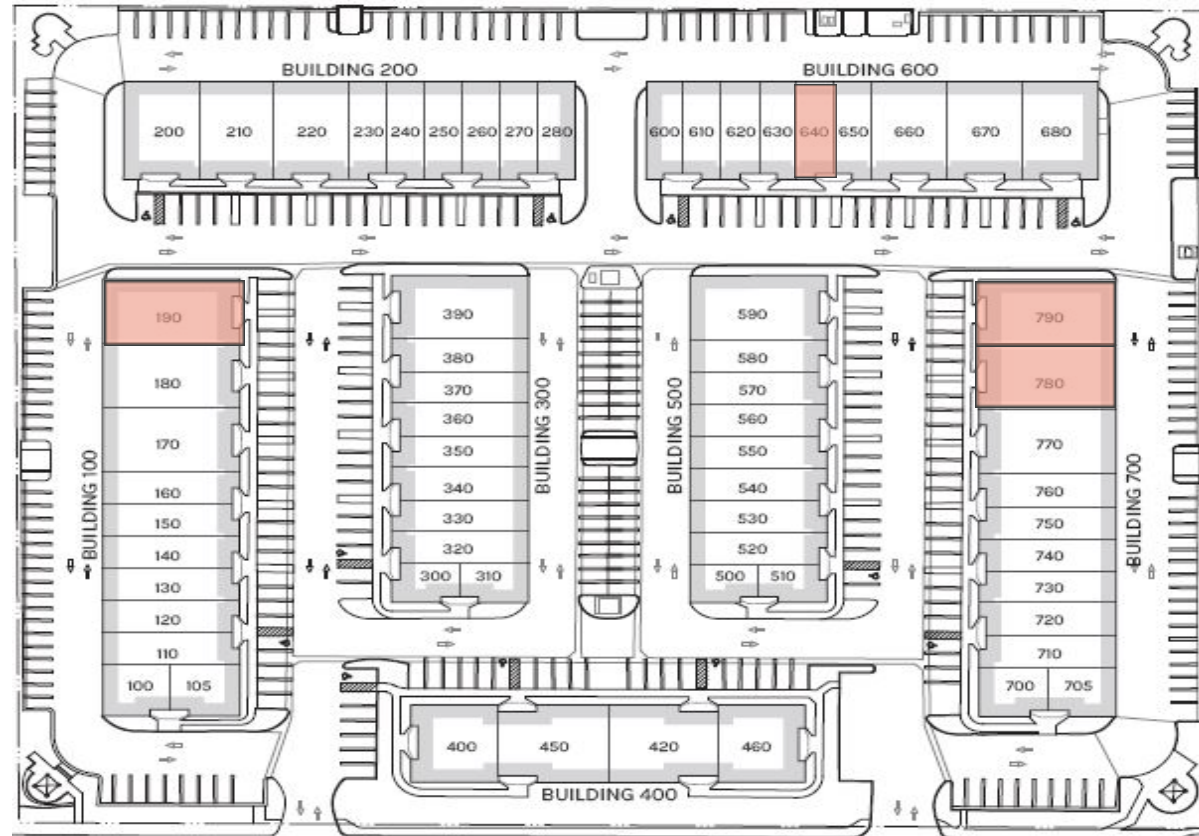
# FOR LEASE

## 10700 Jersey Blvd

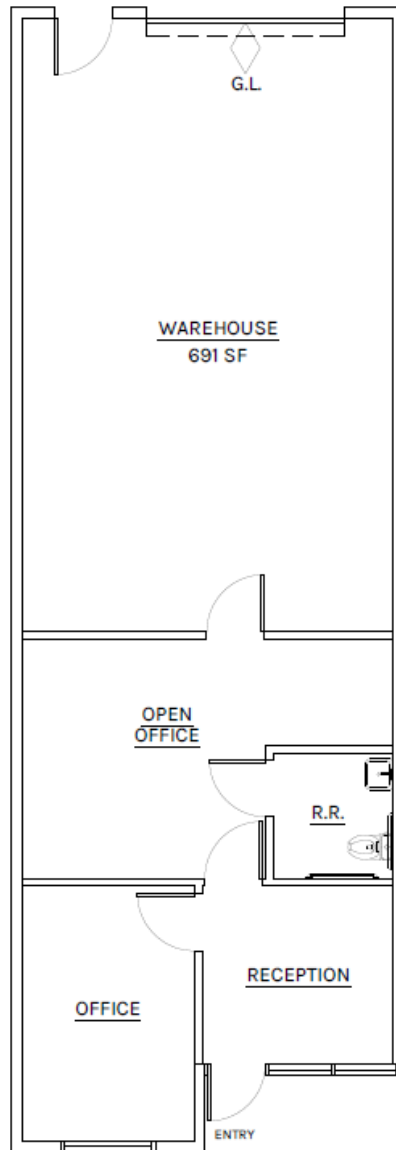
RANCHO CUCAMONGA, CALIFORNIA

UNIT	TOTAL SF	WAREHOUSE SF	LEASE RATE	LOADING DOORS	AMPS	SPACE TYPE	OCCUPANCY
640	1,200 SF	691 SF	\$1.55/SF + \$0.09 CAM	1	100	INDUSTRIAL	7/1/2026
190	2,916 SF	1,689 SF	\$1.50/SF + \$0.09 CAM	2	200	INDUSTRIAL	7/1/2026
*780	2,880 SF	2,478 SF	\$1.50/SF + \$0.09 CAM	2	200	INDUSTRIAL	5/1/2026
*790	2,916 SF	2,514 SF	\$1.50/SF + \$0.09 CAM	2	200	INDUSTRIAL	5/1/2026

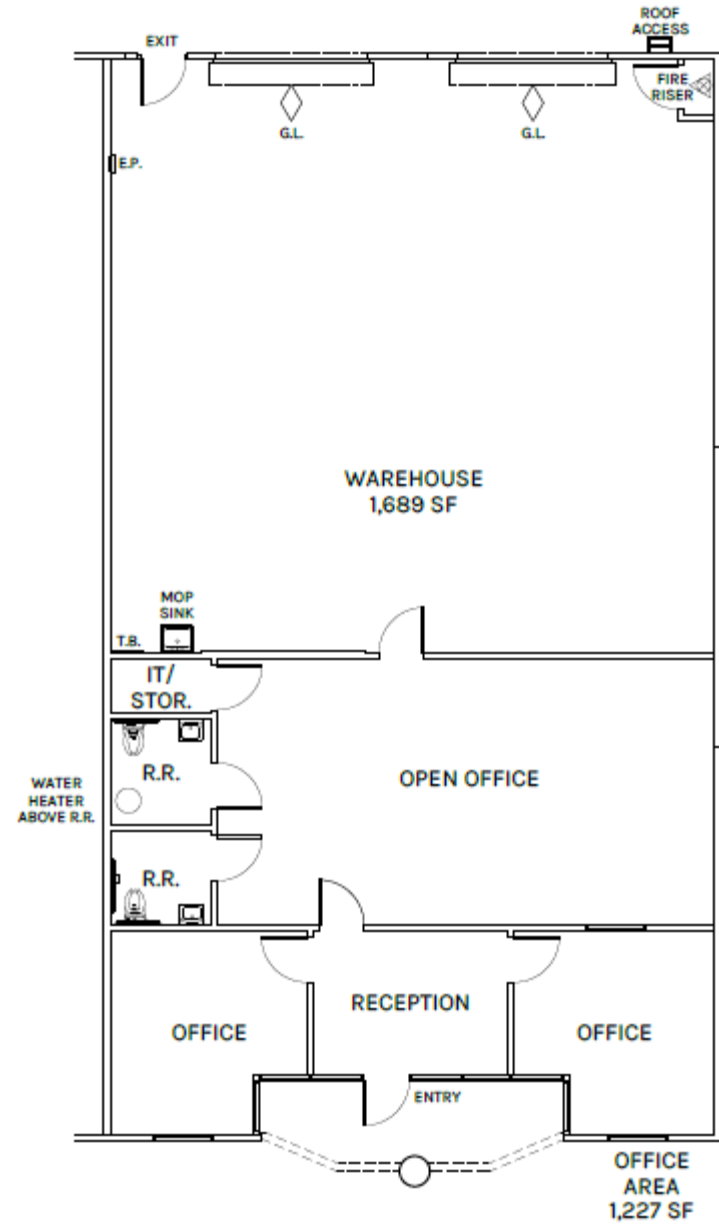
\*Units can be combined for a total of 5,796 SF



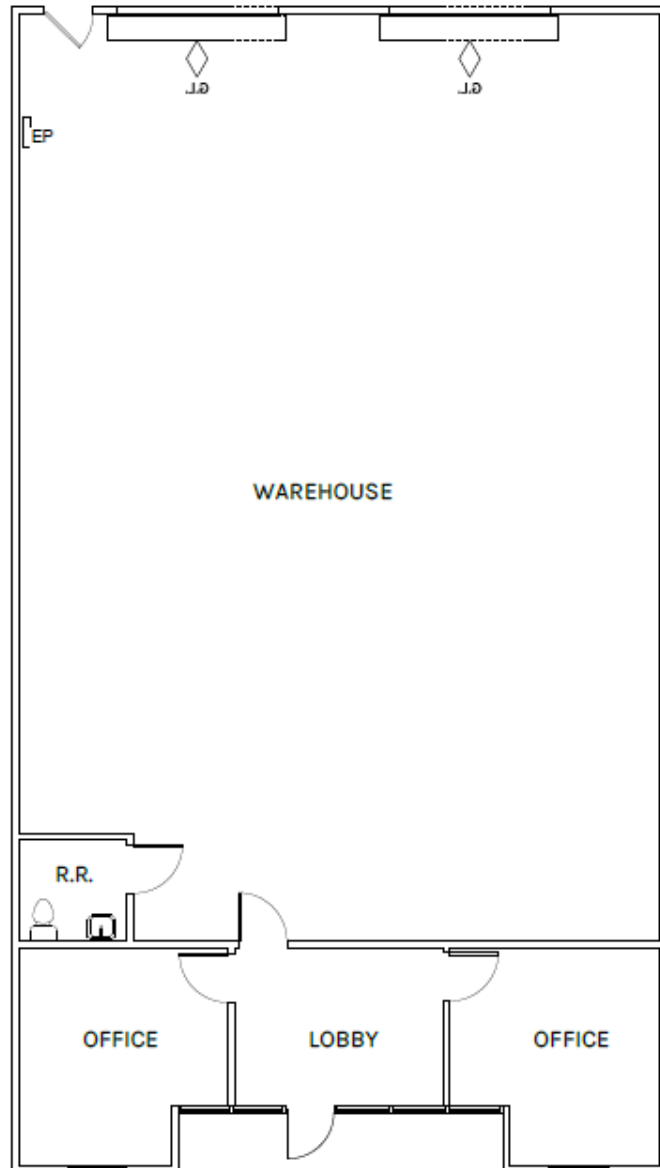
#640 | 1,200 SF



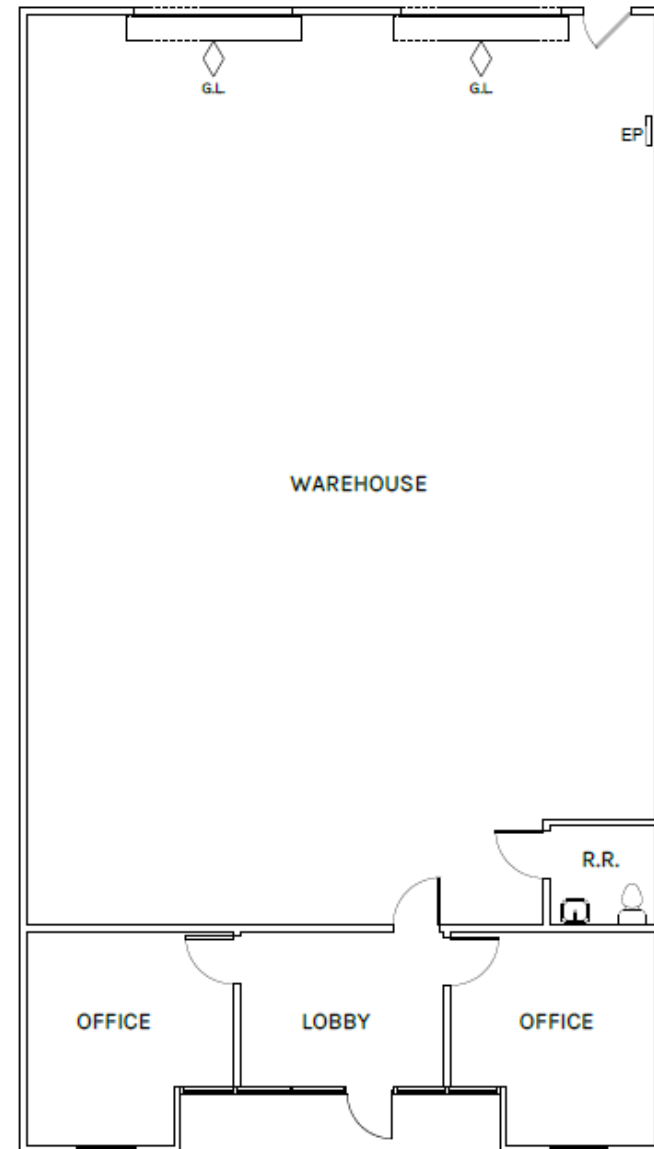
#190 | 2,916 SF

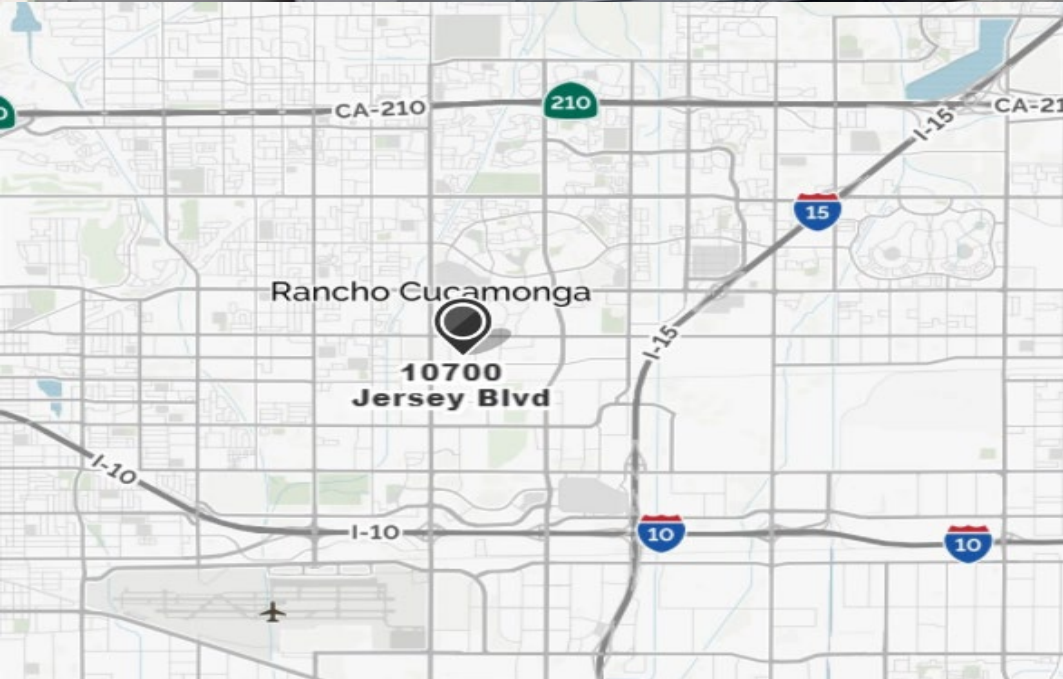


#780 | 2,880 SF



#790 | 2,916 SF





**Rexford  
Industrial**

**DANYEIL STALLWORTH**

424-256-2129

[Dstallworth@rexfordindustrial.com](mailto:Dstallworth@rexfordindustrial.com)

CA License #01990196

**ALEXANDRIA PIRRITANO**

424-243-7771

[Apirritano@rexfordindustrial.com](mailto:Apirritano@rexfordindustrial.com)