



BANK OF AMERICA TOWER AT
PARKSIDE

Floor 18
29,180 RSF

SARA TERRY, SIOR

CMO | EVP, Leasing

404 625 8458

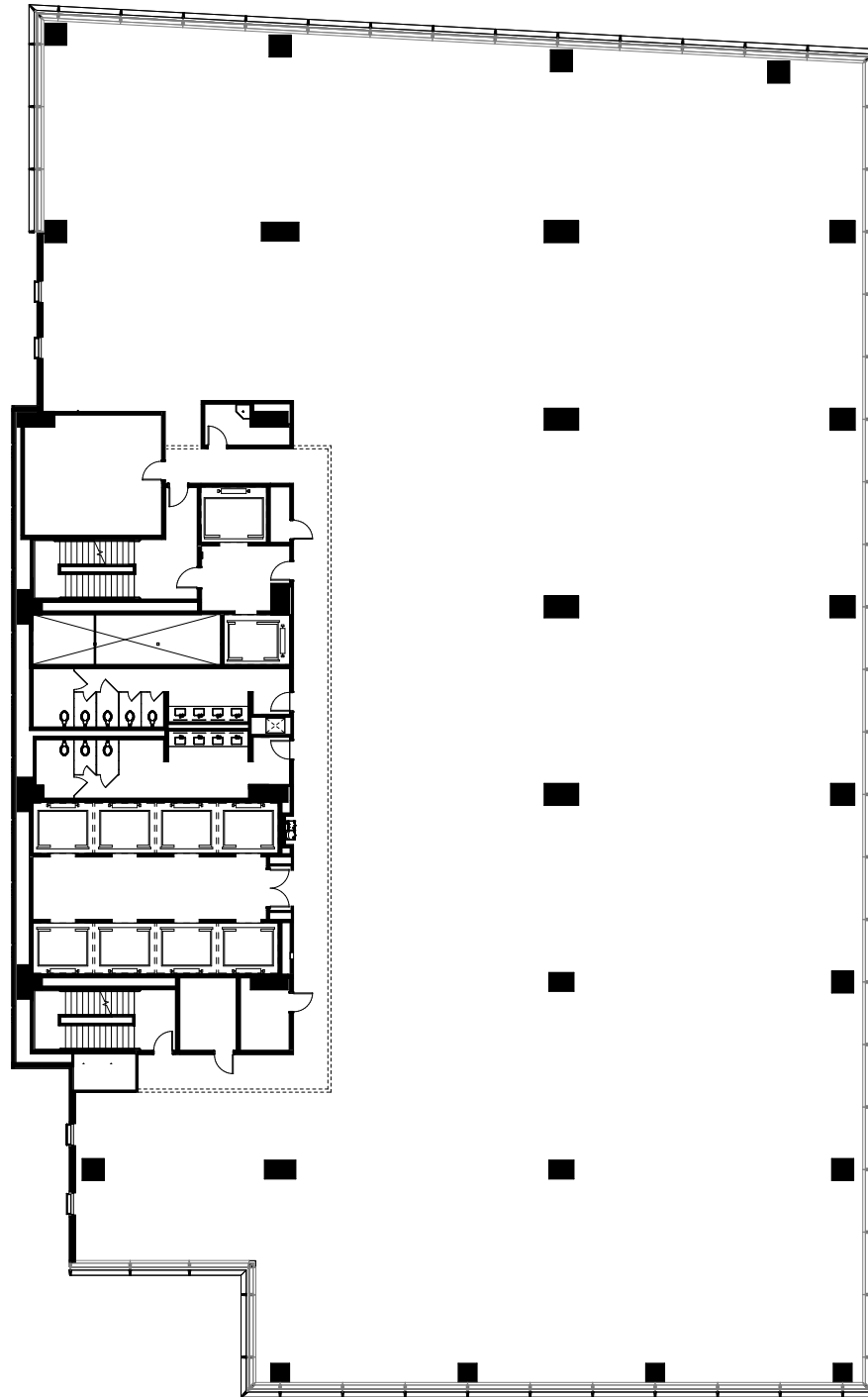
st@pacificelm.com

REEGAN BUSBY

Vice President, Leasing

310 699 3070

rb@pacificelm.com



OWNED AND
MANAGED BY:

PACIFICELM
PROPERTIES