


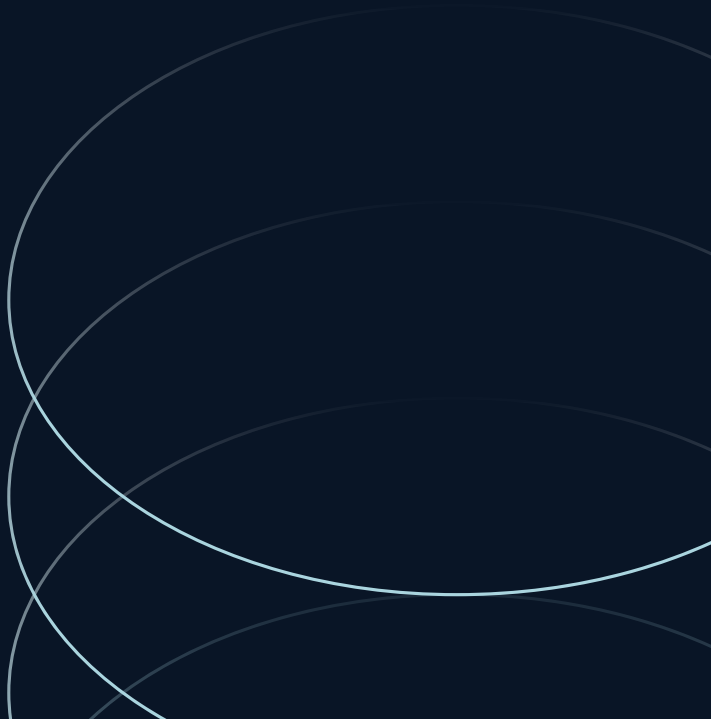


1432  
**K STREET**  
*on McPherson Square*

 **JLL** SEE A BRIGHTER WAY

# For lease

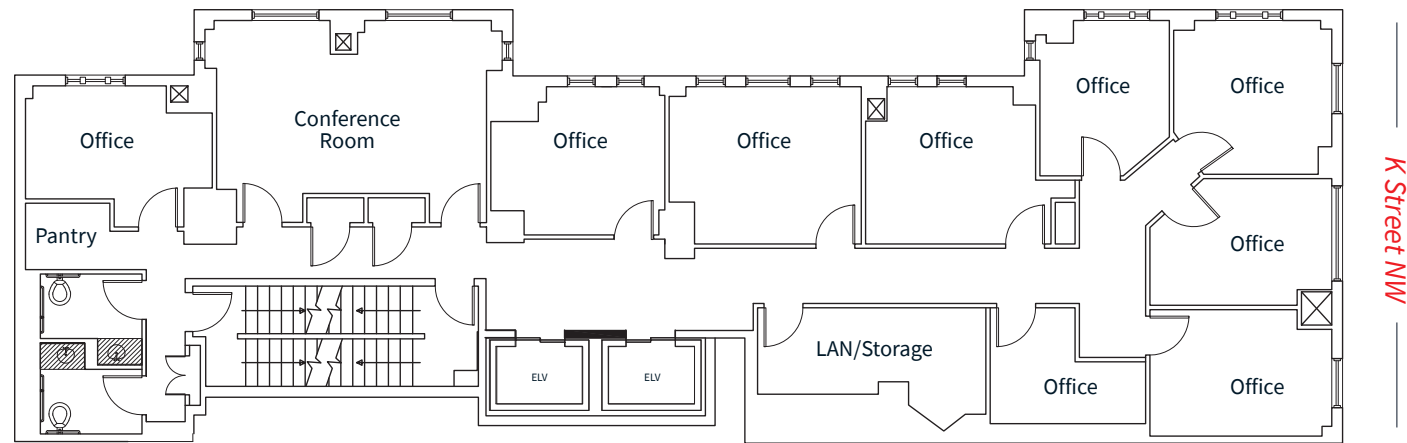
Full floor opportunities  
with incredible park  
views for small tenants



# Suite 600

2,637 RSF

15<sup>th</sup> Street NW

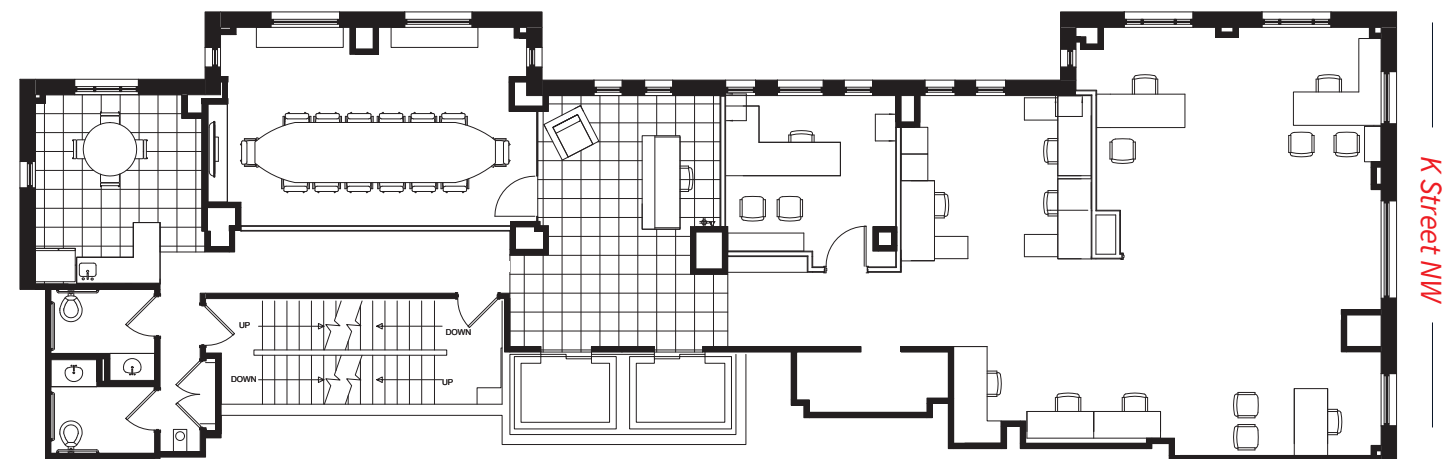


K Street NW

# Suite 900

2,662 RSF

15<sup>th</sup> Street NW

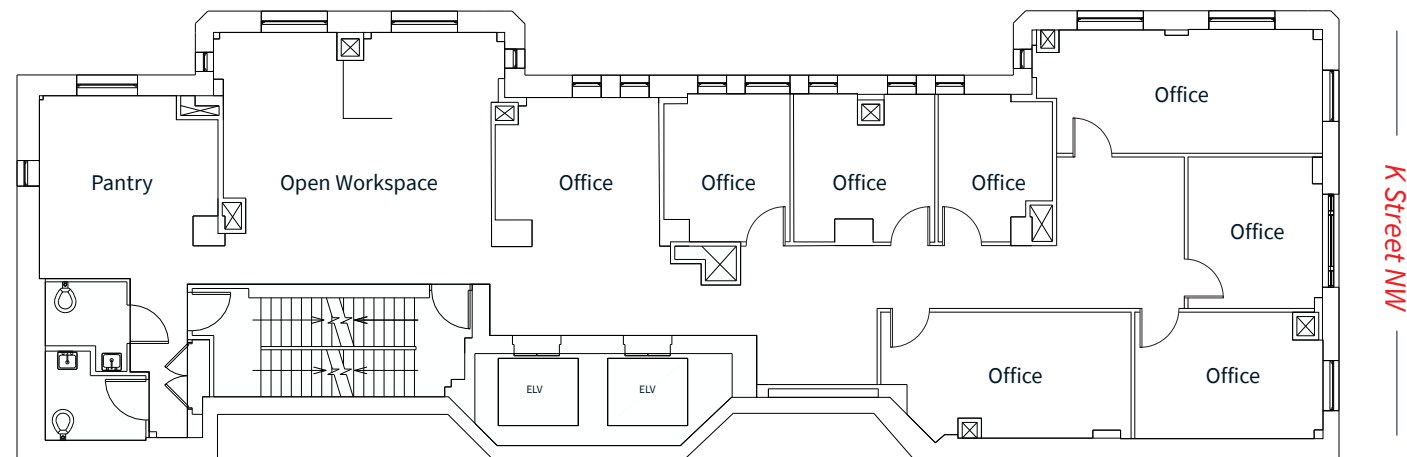


K Street NW

# Suite 800

2,654 RSF

15<sup>th</sup> Street NW



K Street NW

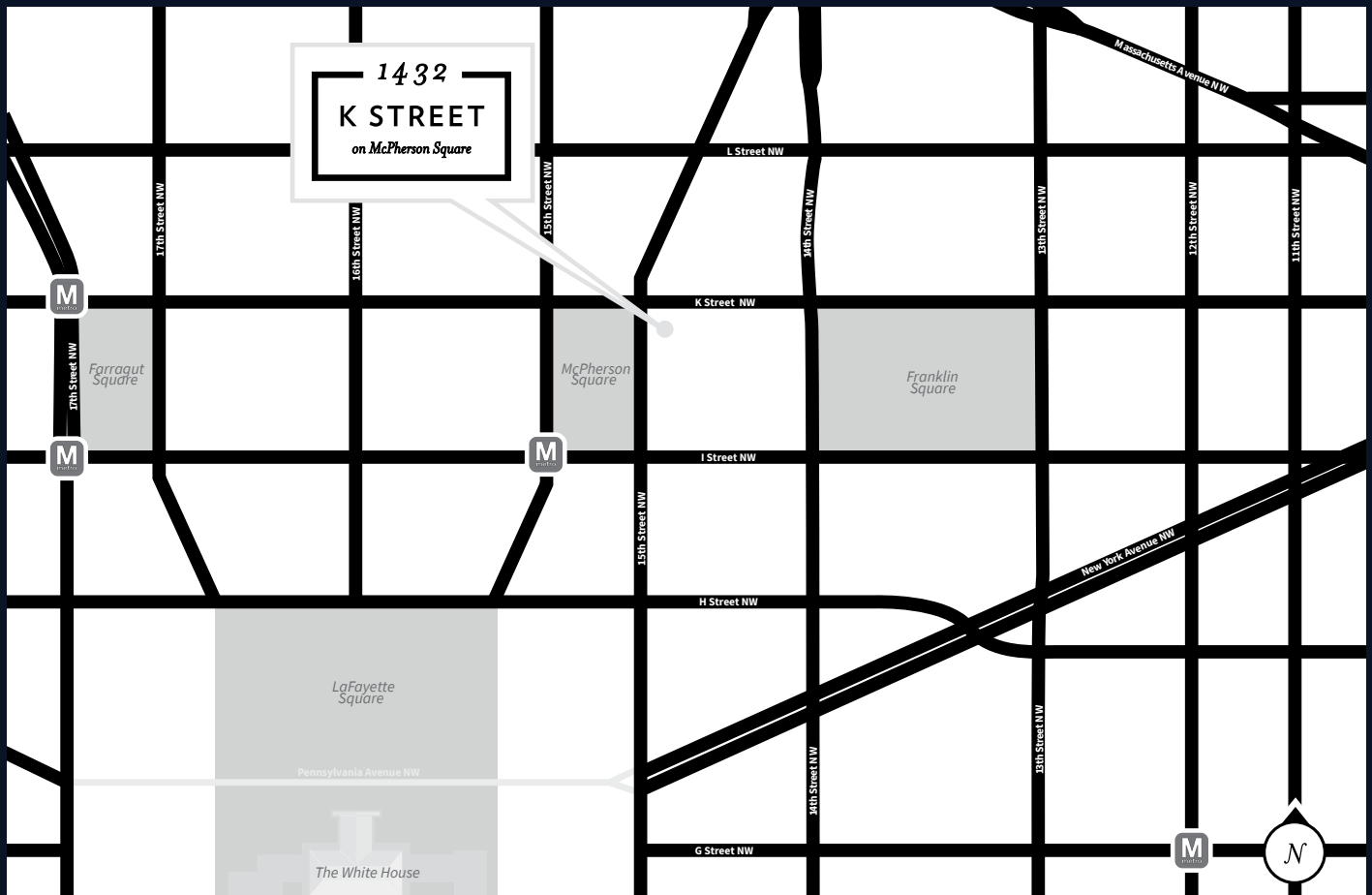
### Three full floors available

Prominently positioned on McPherson Square in the heart of the East End.



# 1432 K Street NW

Washington, DC 20005



**JLL**

**Tom Golsen**

*Senior Managing Director*

Thomas.Golsen@jll.com

+1 202 719 5888

**Julia Scott**

*Vice President*

Julia.Scott@jll.com

+1 202 719 5580

Although information has been obtained from sources deemed reliable, JLL does not make any guarantees, warranties or representations, express or implied, as to the completeness or accuracy as to the information contained herein. Any projections, opinions, assumptions or estimates used are for example only. There may be differences between projected and actual results, and those differences may be material. JLL does not accept any liability for any loss or damage suffered by any party resulting from reliance on this information. If the recipient of this information has signed a confidentiality agreement with JLL regarding this matter, this information is subject to the terms of that agreement. ©2026 Jones Lang LaSalle Brokerage, Inc. All rights reserved.