

## Retail Property For Lease

Lakeshore Point Retail Center  
300 Pearl Nix Parkway  
Gainesville, GA 30501



## Prime Retail Space Available

### Offering Summary

Lease Rate:	\$14.50/SF NNN
Building Size:	21,906 SF
Available SF:	8,655 SF
Lot Size:	2.8 Acres
Year Built:	1995
Zoning:	Neighborhood Business
Market:	Hall County
Submarket:	Gainesville
Traffic Count:	9,110

### Get more information

**Andrew D. Joyner, CCIM**

Senior Vice President

D 770 532 9911

[andrew.joyner@avisonyoung.com](mailto:andrew.joyner@avisonyoung.com)



## Property Highlights

- Prime retail space available near soon to be redeveloped Lakeshore Mall in Gainesville
- Surrounded by other national retailers & restaurants including, Harbor Freight, Arby's, Burger King, Zaxby's, Belk, Target, Lowe's, Wal-Mart, Dollar Tree, Big Lots, & Books-a-Million
- Zoned: Neighborhood Business
- Gainesville serves as the main retail, financial, and medical hub for northeast Georgia, serving over 450,000 residents

## Lease Information

Lease Type:	NNN	Lease Term:	Negotiable
Total Space Available:	8,655 SF	Lease Rate:	\$14.50/SF

## Available Spaces

Suite	Tenant	Size (SF)	Lease Type	Lease Rate
300 Pearl Nix Parkway - Suite B	Available	4,000 SF	NNN	\$14.50/SF
300 Pearl Nix Parkway - Suite C	Available	4,655 SF	NNN	\$14.50/SF



**Andrew D. Joyner, CCIM**

Senior Vice President

D 770 532 9911

[andrew.joyner@avisonyoung.com](mailto:andrew.joyner@avisonyoung.com)

Avison Young - Gainesville | 425 Spring Street SE, Suite 200 | Gainesville, GA 30501

© 2024. Avison Young - Gainesville. Information contained herein was obtained from sources deemed reliable and, while thought to be correct, have not been verified.

Avison Young - Gainesville does not guarantee the accuracy or completeness of the information presented, nor assumes any responsibility or liability for any errors or omissions therein.

## Suite B Photos

300 Pearl Nix Parkway



**AVISON  
YOUNG**

**Andrew D. Joyner, CCIM**

Senior Vice President

D 770 532 9911

[andrew.joyner@avisonyoung.com](mailto:andrew.joyner@avisonyoung.com)

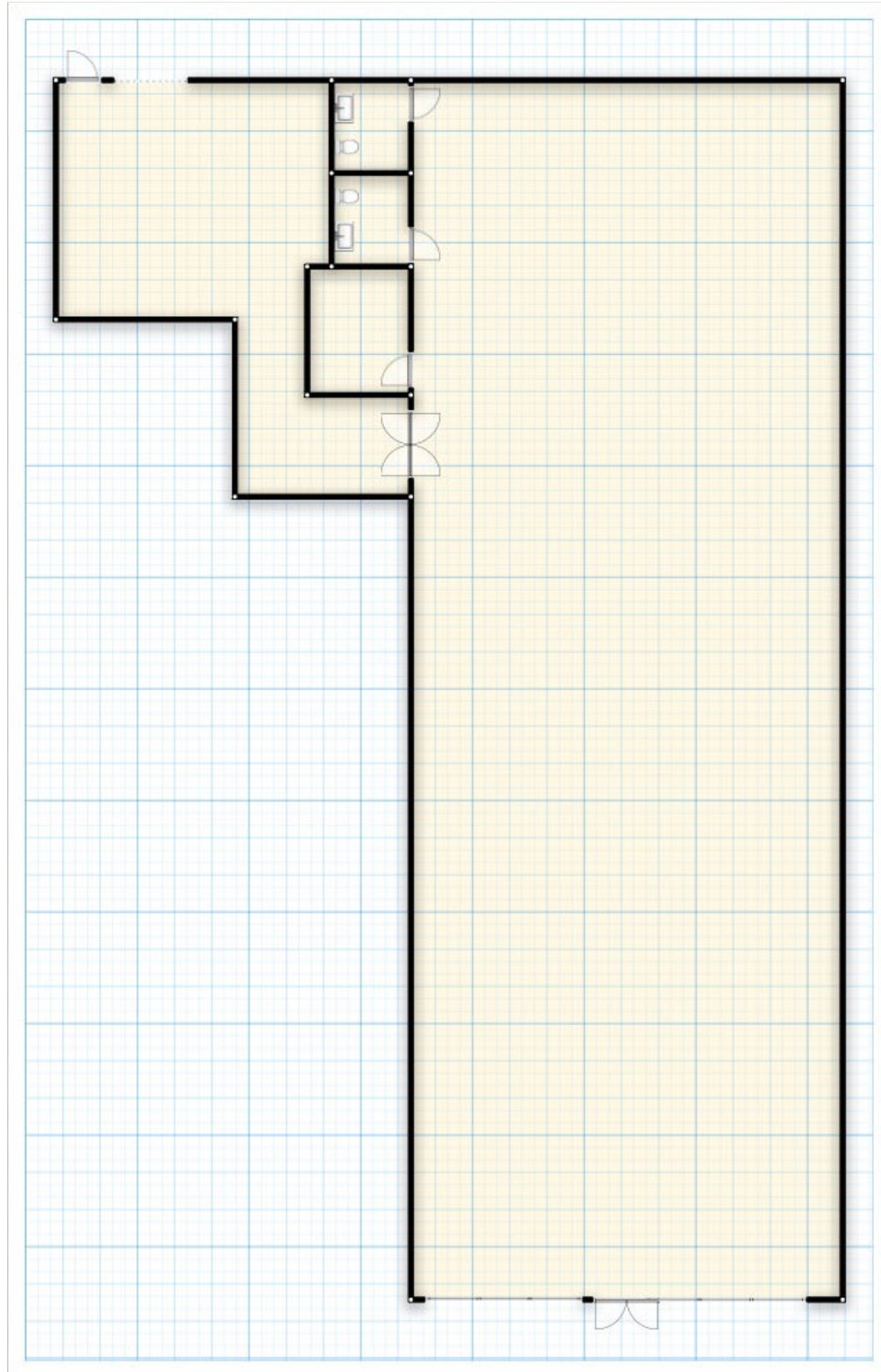
Avison Young - Gainesville | 425 Spring Street SE, Suite 200 | Gainesville, GA 30501

© 2024, Avison Young - Gainesville. Information contained herein was obtained from sources deemed reliable and, while thought to be correct, have not been verified.

Avison Young - Gainesville does not guarantee the accuracy or completeness of the information presented, nor assumes any responsibility or liability for any errors or omissions therein.

# Suite C Floorplan

300 Pearl Nix Parkway



**Andrew D. Joyner, CCIM**

Senior Vice President

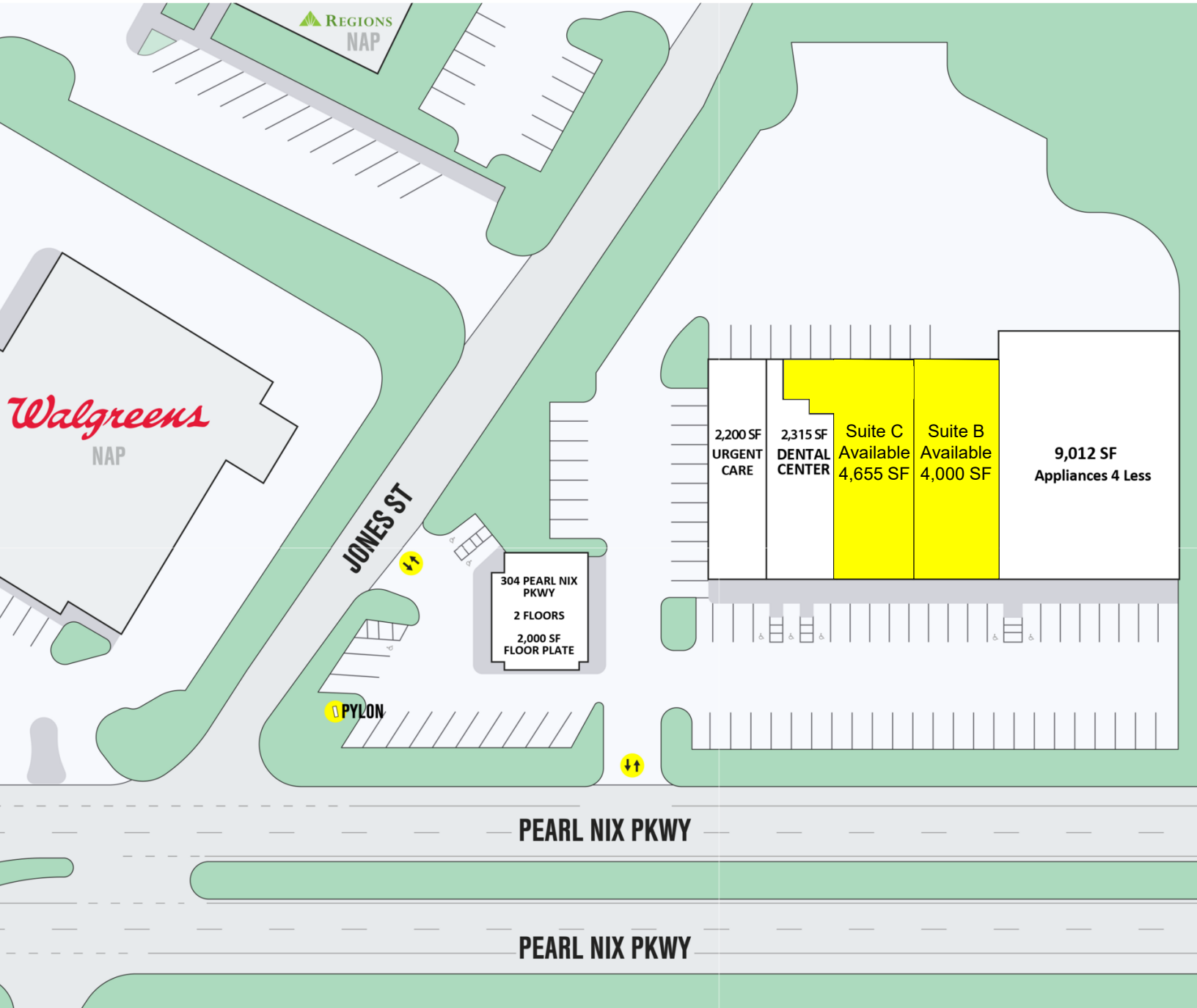
D 770 532 9911

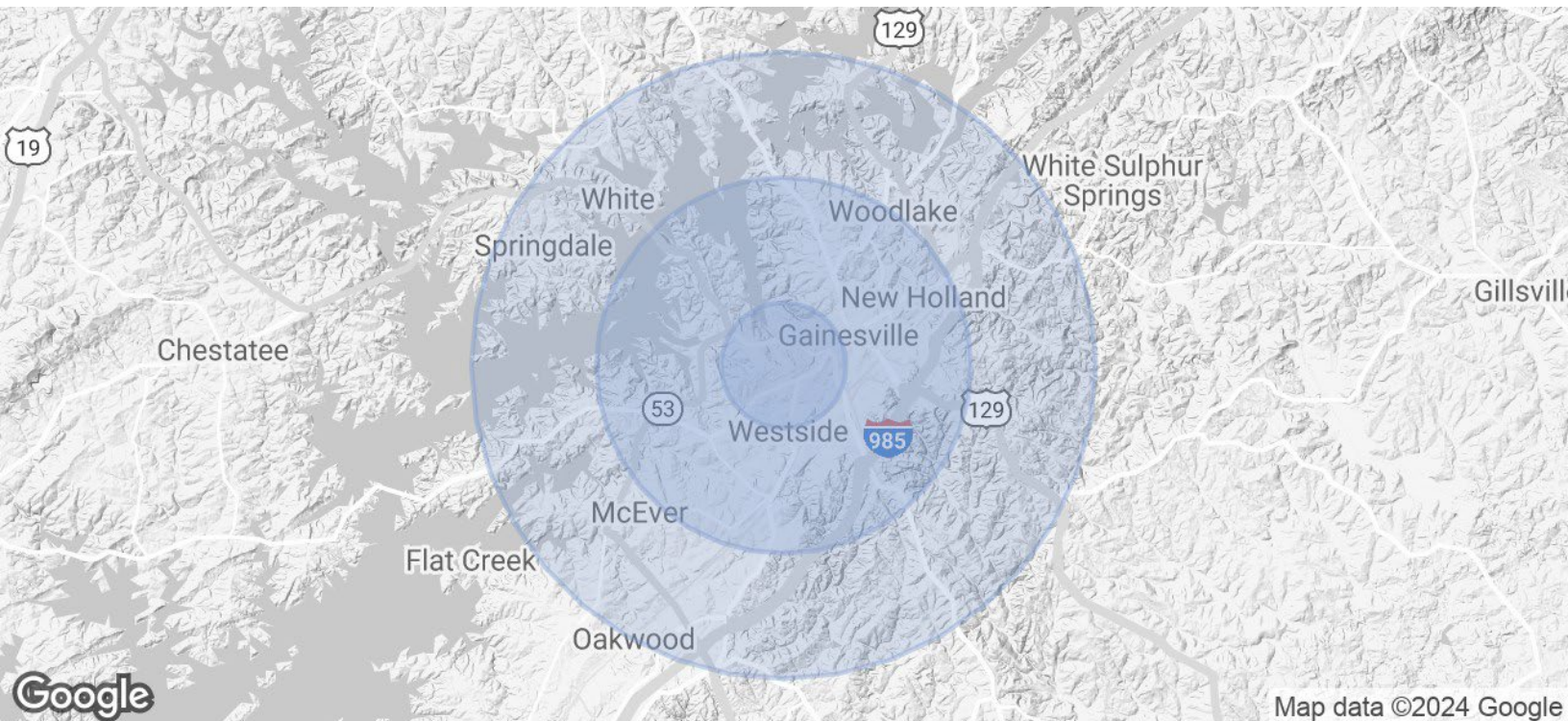
[andrew.joyner@avisonyoung.com](mailto:andrew.joyner@avisonyoung.com)

Avison Young - Gainesville | 425 Spring Street SE, Suite 200 | Gainesville, GA 30501

© 2024. Avison Young - Gainesville. Information contained herein was obtained from sources deemed reliable and, while thought to be correct, have not been verified.

Avison Young - Gainesville does not guarantee the accuracy or completeness of the information presented, nor assumes any responsibility or liability for any errors or omissions therein.





<b>Population</b>	<b>1 Mile</b>	<b>3 Miles</b>	<b>5 Miles</b>
Total Population	7,923	38,214	68,160
Average Age	25.7	28.9	31.1
Average Age (Male)	26.4	27.8	30.0
Average Age (Female)	23.8	29.2	31.9

<b>Households &amp; Income</b>	<b>1 Mile</b>	<b>3 Miles</b>	<b>5 Miles</b>
Total Households	2,541	12,609	22,773
# of Persons per HH	3.1	3.0	3.0
Average HH Income	\$44,834	\$53,158	\$58,804
Average House Value	\$273,713	\$245,750	\$249,213

\* Demographic data derived from 2020 ACS - US Census



**Andrew D. Joyner, CCIM**

Senior Vice President

D 770 532 9911

[andrew.joyner@avisonyoung.com](mailto:andrew.joyner@avisonyoung.com)

# Retail Property For Lease

304 Pearl Nix Parkway



**Andrew D. Joyner, CCIM**

Senior Vice President

D 770 532 9911

[andrew.joyner@avisonyoung.com](mailto:andrew.joyner@avisonyoung.com)

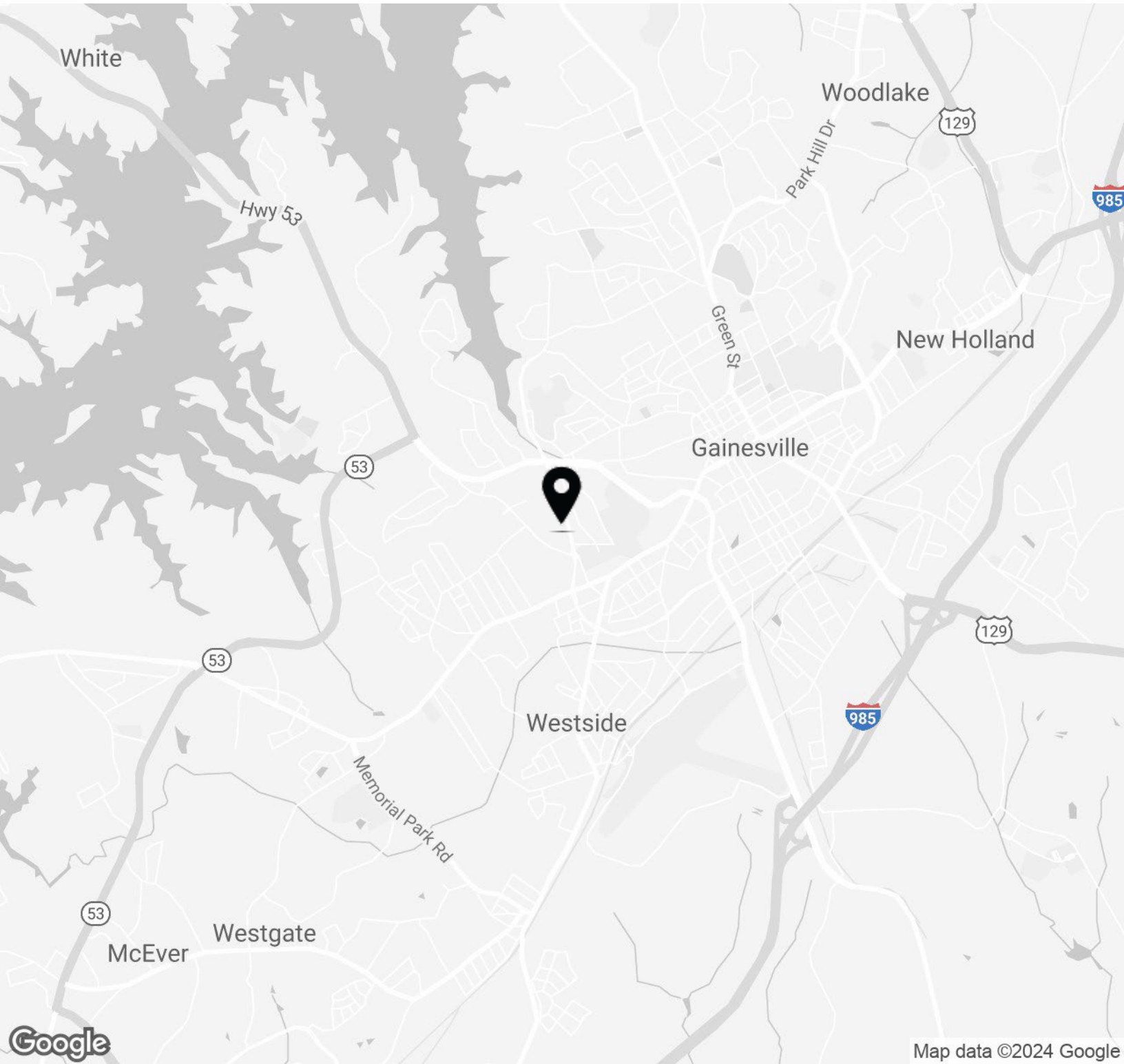
Avison Young - Gainesville | 425 Spring Street SE, Suite 200 | Gainesville, GA 30501

© 2024, Avison Young - Gainesville. Information contained herein was obtained from sources deemed reliable and, while thought to be correct, have not been verified.

Avison Young - Gainesville does not guarantee the accuracy or completeness of the information presented, nor assumes any responsibility or liability for any errors or omissions therein.

# Retail Property For Lease

304 Pearl Nix Parkway



**AVISON  
YOUNG**

**Andrew D. Joyner, CCIM**

Senior Vice President

D 770 532 9911

[andrew.joyner@avisonyoung.com](mailto:andrew.joyner@avisonyoung.com)

Avison Young - Gainesville | 425 Spring Street SE, Suite 200 | Gainesville, GA 30501

© 2024, Avison Young - Gainesville. Information contained herein was obtained from sources deemed reliable and, while thought to be correct, have not been verified.

Avison Young - Gainesville does not guarantee the accuracy or completeness of the information presented, nor assumes any responsibility or liability for any errors or omissions therein.

**Andrew D. Joyner, CCIM**

Senior Vice President

D 770 532 9911

[andrew.joyner@avisonyoung.com](mailto:andrew.joyner@avisonyoung.com)

# Let's talk.

Avison Young - Gainesville

425 Spring Street SE, Suite 200 | Gainesville, GA 30501

© 2024. Avison Young - Gainesville. Information contained herein was obtained from sources deemed reliable and, while thought to be correct, have not been verified. Avison Young - Gainesville does not guarantee the accuracy or completeness of the information presented, nor assumes any responsibility or liability for any errors or omissions therein.

**AVISON  
YOUNG**