

# 295 STONER AVENUE

Westminster, Maryland 21157 | Carroll County

PREMIUM TURNKEY MEDICAL CONDO

FOR SALE



## FEATURES

- **Suite 305:** 3,304 square foot medical condo located on the 3<sup>rd</sup> floor
- **Sale Price:** \$200 psf or \$660,000
- **Location:** Prime location next to Carroll Hospital Center, Westminster, MD
- **Elevator Access:** Yes
- The space is tailored for healthcare layout with built-in plumbing for sinks, exam rooms prepped and ready, along with ample natural light and central HVAC. Quiet and accessible.
- Own your practice space, don't rent!

**NAI**kl**nb**

**Austin Eber**  
aeber@klnb.com  
443-574-1414

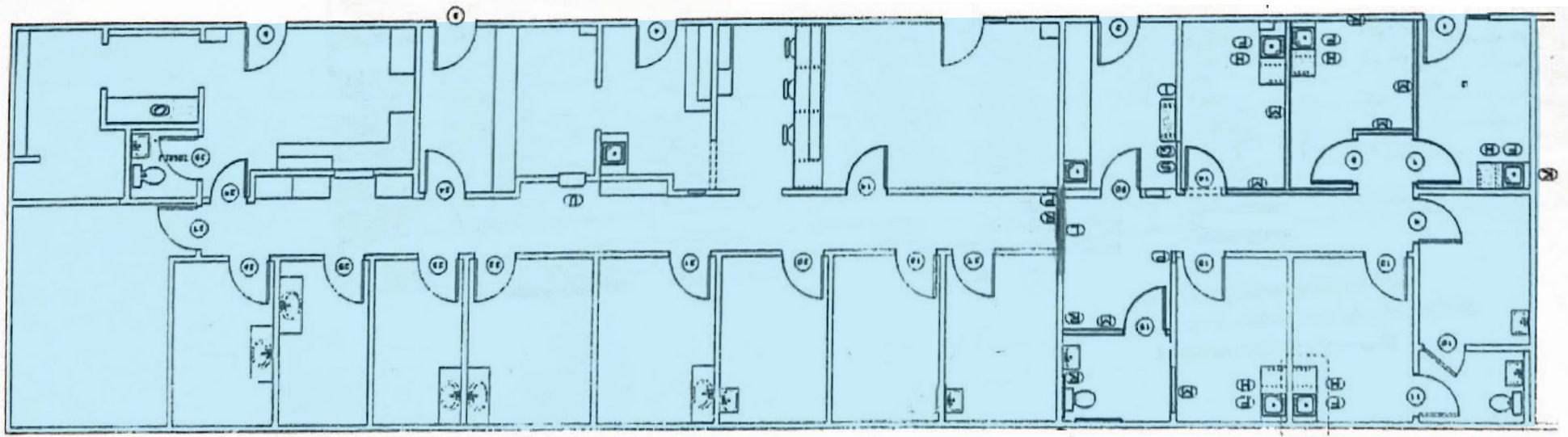
**Colin McGonigal**  
cmcgonigal@klnb.com  
443-377-8633

9881 Broken Land Pkwy, Suite 300  
Columbia, MD 21046

# 295 STONER AVENUE

Westminster, Maryland 21157 | Carroll County

## FLOOR PLAN



**Austin Eber**  
aeber@klnb.com  
443-574-1414

**Colin McGonigal**  
cmcgonigal@klnb.com  
443-377-8633

9881 Broken Land Pkwy, Suite 300  
Columbia, MD 21046  
klnb.com



# 295 STONER AVENUE

Westminster, Maryland 21157 | Carroll County

## INTERIOR PHOTOS



Austin Eber  
aeber@klnb.com  
443-574-1414

Colin McGonigal  
cmcgonigal@klnb.com  
443-377-8633

9881 Broken Land Pkwy, Suite 300  
Columbia, MD 21046  
klnb.com

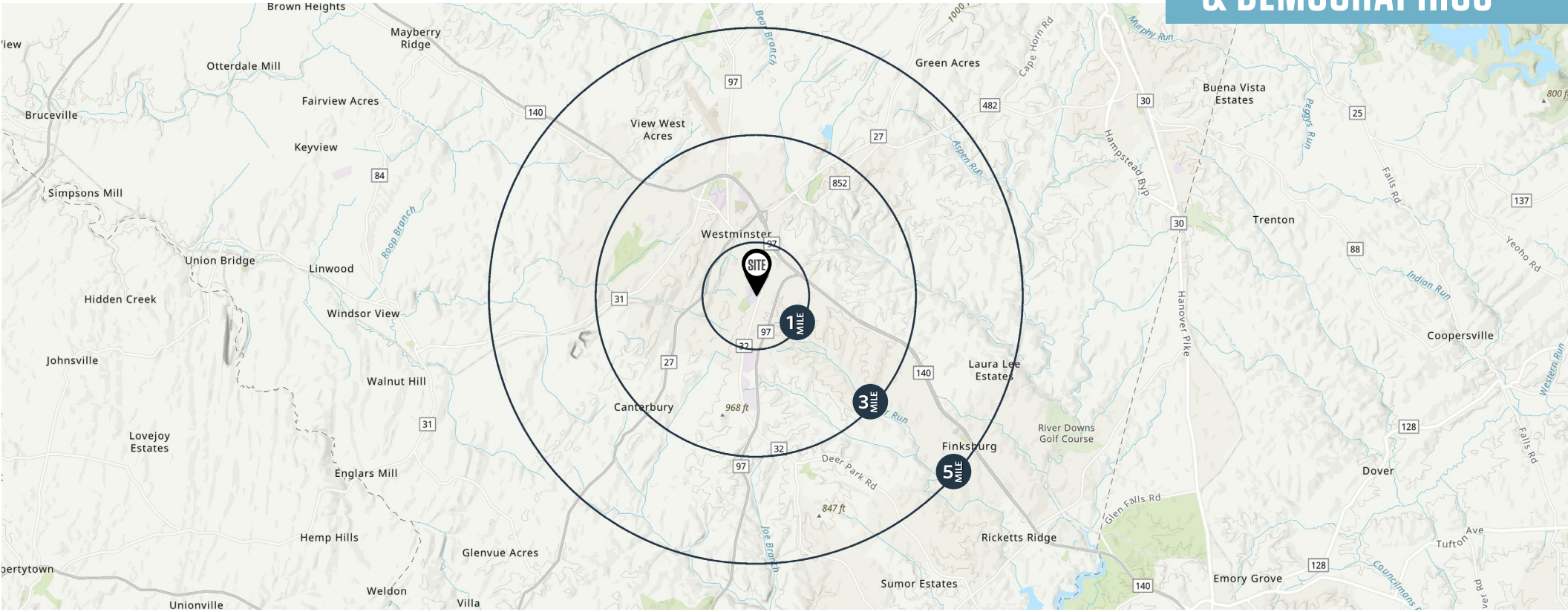


# 295 STONER AVENUE

Westminster, Maryland 21157 | Carroll County





LOCATION

& DEMOGRAPHICS



## TRAFFIC COUNTS | 2025

S. Center Street	9,341 ADT
Gist Road	3,214 ADT

	1-MILE	3-MILES	5-MILES		1-MILE	3-MILES	5-MILES
 Population	8,211	35,325	48,610	 Households	3,445	13,238	18,208
 Daytime Population	12,001	41,079	51,591	 Median Household Income	\$61,706	100,339	\$105,204

Austin Eber  
aeber@klnb.com  
443-574-1414

Colin McGonigal  
cmcgonigal@klnb.com  
443-377-8633

9881 Broken Land Pkwy, Suite 300  
Columbia, MD 21046  
klnb.com



# 295 STONER AVENUE

Westminster, Maryland 21157

Carroll County

[CLICK TO VIEW PROPERTY WEBSITE](#)

**For More Information, Please Contact:**

**Austin Eber**  
aeber@klnb.com  
443-574-1414

**Colin McGonigal**  
cmcgonigal@klnb.com  
443-377-8633



While we have no reason to doubt the accuracy of any of the information supplied, we cannot, and do not, guarantee its accuracy. All information should be independently verified prior to a purchase or lease of the property. We are not responsible for errors, omissions, misuse, or misinterpretation of information contained herein and make no warranty of any kind, express or implied, with respect to the property or any other matters.

9881 Broken Land Pkwy, Suite 300  
Columbia, MD 21046  
[klnb.com](http://klnb.com)

