

220 N. Smith Street

Suite 228

220 N. Smith Street, Palatine, IL 60067



DETAILS

Square Feet: 1,289 S.F.

Net Rent: \$14.00/S.F.

OP. Expense: \$8.42/S.F.

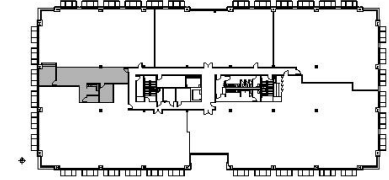
Tax: \$7.40/S.F.

Gross Rent: \$29.82/S.F.

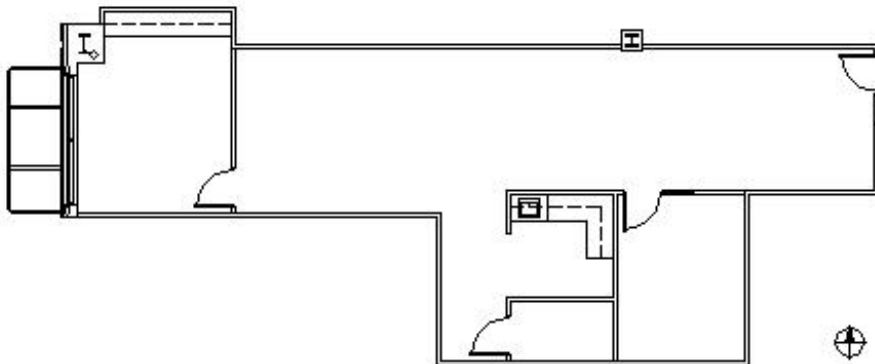
SUITE FEATURES

- Reception Area
- Open Area
- 2 Private Offices
- Break Room
- Server Room
- Conveniently located directly across from Palatine Metra Station
- Covered Parking Available for All Tenants
- Convenient Downtown Palatine Location with Shops & Restaurants
- Development includes a Dry Cleaners and Sandwich Shop

SECOND FLOOR PLAN



SPACE PLAN



HAMILTON PARTNERS - Sponsoring Broker

Brian Lunt

✉ blunt@hpre.com

P 847-459-2249

F 847-459-8918