



Land & Development in WA11

Litherland Crescent, St. Helens,
Merseyside, WA11 9AJ

£35,000 Starting Bid

Tenure
Freehold

Private parking

Property features

- ✓ Close to local amenities
- ✓ Transport links nearby
- ✓ Viewing Recommended

Arrange a viewing

Lisa Neil
Branch Manager
Commercial National

0191 737 1154
commercial@pattinson.co.uk

- ✓ Flexible viewing slots
- ✓ Accompanied viewings

Description

For sale via secure sale online bidding - terms and conditions apply

We are pleased to offer this site to auction. Located in St Helens, Meseryside, this site is situated close to local amenities such as shops and parks.

The site is also close to transport links.

Please note we have not inspected this site.

Price: Starting Bid £35,000

Property Type: Land & Development

Business Type: Other/Unspecified

Parking: Private

Location

Located in St Helens, Merseyside, this site is situated close to local amenities such as shops and parks.

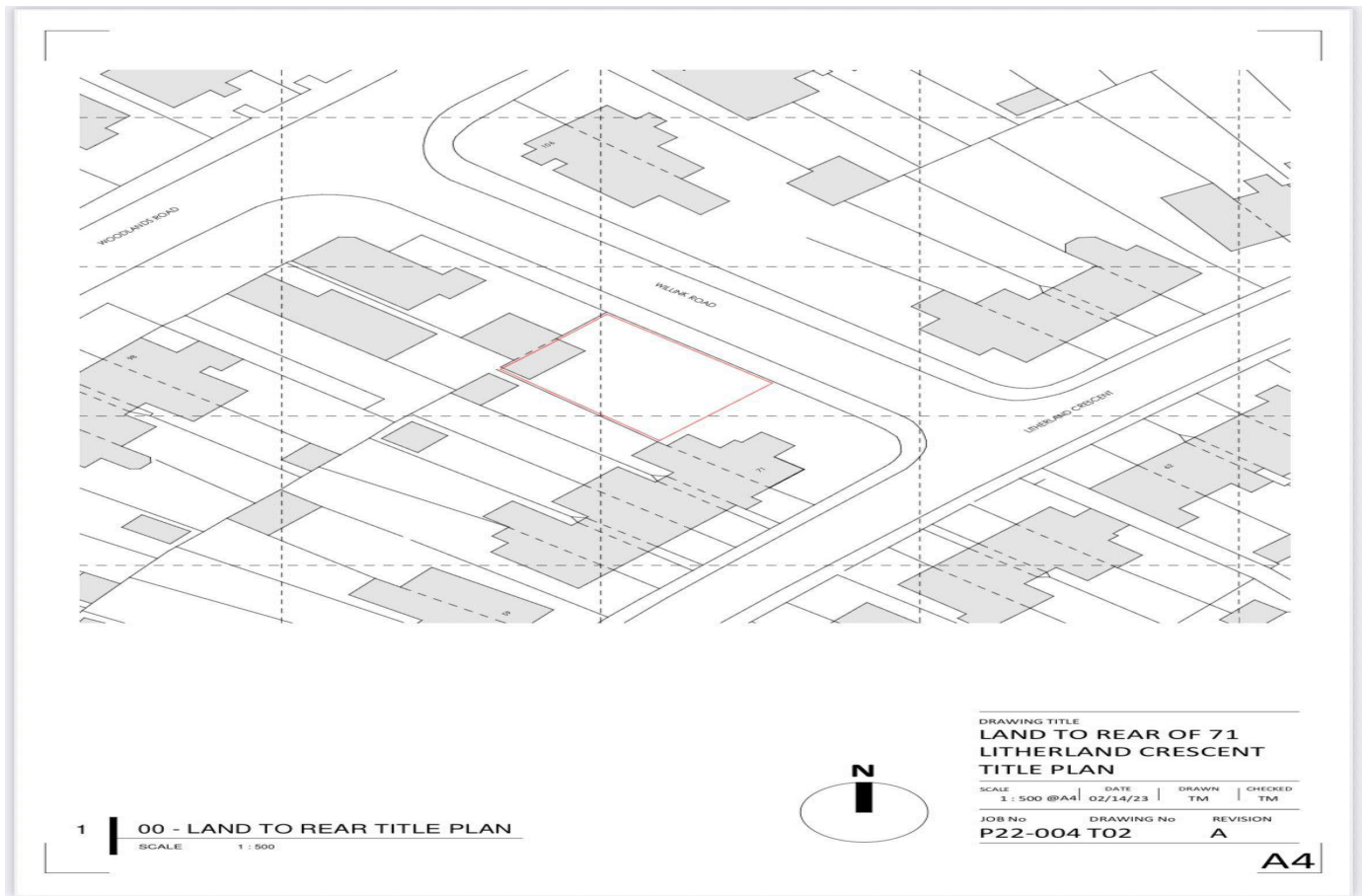
The site is also close to transport links.

Site details

We have been advised the site measures 17m x 13m

Additional information

For further information please contact our commercial team on 0191 737 1154, or alternatively via email on commercial@pattinson.co.uk. With regards to viewing subject site, this is to be done strictly by appointment.



Litherland Crescent, St. Helens, Merseyside, WA11 9AJ

Contact your local branch today for more information on this property:

**Keith Pattinson Silverlink, Wallsend, Tyne and Wear, NE28 9NY, Tel: 0191 737 1154 ,
commercial@pattinson.co.uk, www.pattinson.co.uk**

These particulars, whilst believed to be accurate are set out as a general outline only for guidance and do not constitute any part of an offer or contract. Intending purchasers should not rely on them as statements of representation of fact, but must satisfy themselves by inspection or otherwise as to their accuracy. No person in this firms employment has the authority to make or give any representation or warranty in respect of the property.

