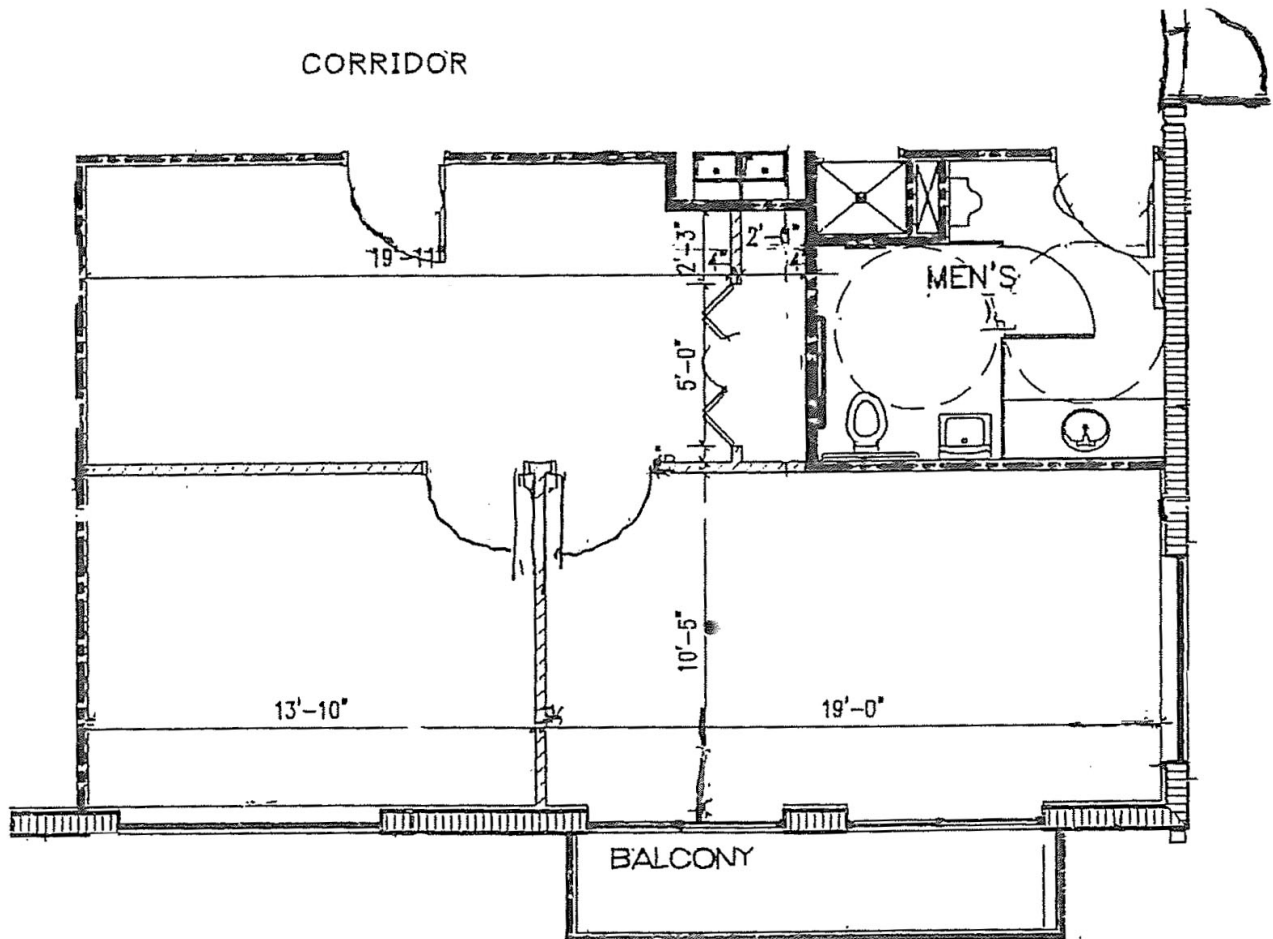




PGA COMMONS

5100 PGA Boulevard
Palm Beach Gardens, FL 33418

Suite 301
707 RSF



Contact Information:

Seth Spiegel,
Vice President of Leasing
Channing Corporation
5100 PGA Boulevard, Suite 209
Palm Beach Gardens, FL 33418
seth@channingcorporation.com
561.630.8630