

ORCHARD SHOPPES



FOR LEASE

4200 Orchard Lake Road / Orchard Lake, MI



RETAIL OPPORTUNITY

ORCHARD SHOPPES



Address

4200 Orchard Lake Road
Orchard Lake, MI 48323

Availability

1,643 - 3,373 SF

Features

Fully entitled, mixed-use project slated to break ground this summer on the highly sought after Orchard Lake Road retail corridor in Orchard Lake, Michigan. The development calls for up to 5,352 SF of retail with a drive-thru that has stacking for 6 vehicles with a 4-story multi-family component. There will be 15, 1-bedroom units and 9, 2-bedroom units above the first floor retail. The site is optimally situated at a traffic signal and sees more than 29,000 VPD passing the property. There are 154,203 people in a five-mile radius. The property is located in one of the wealthiest portions of Oakland County with an average household income of \$158,422 in a three-mile radius. The site is connected to the West Bloomfield Trail, which is a 7.2 mile moderately trafficked point-to-point trail.

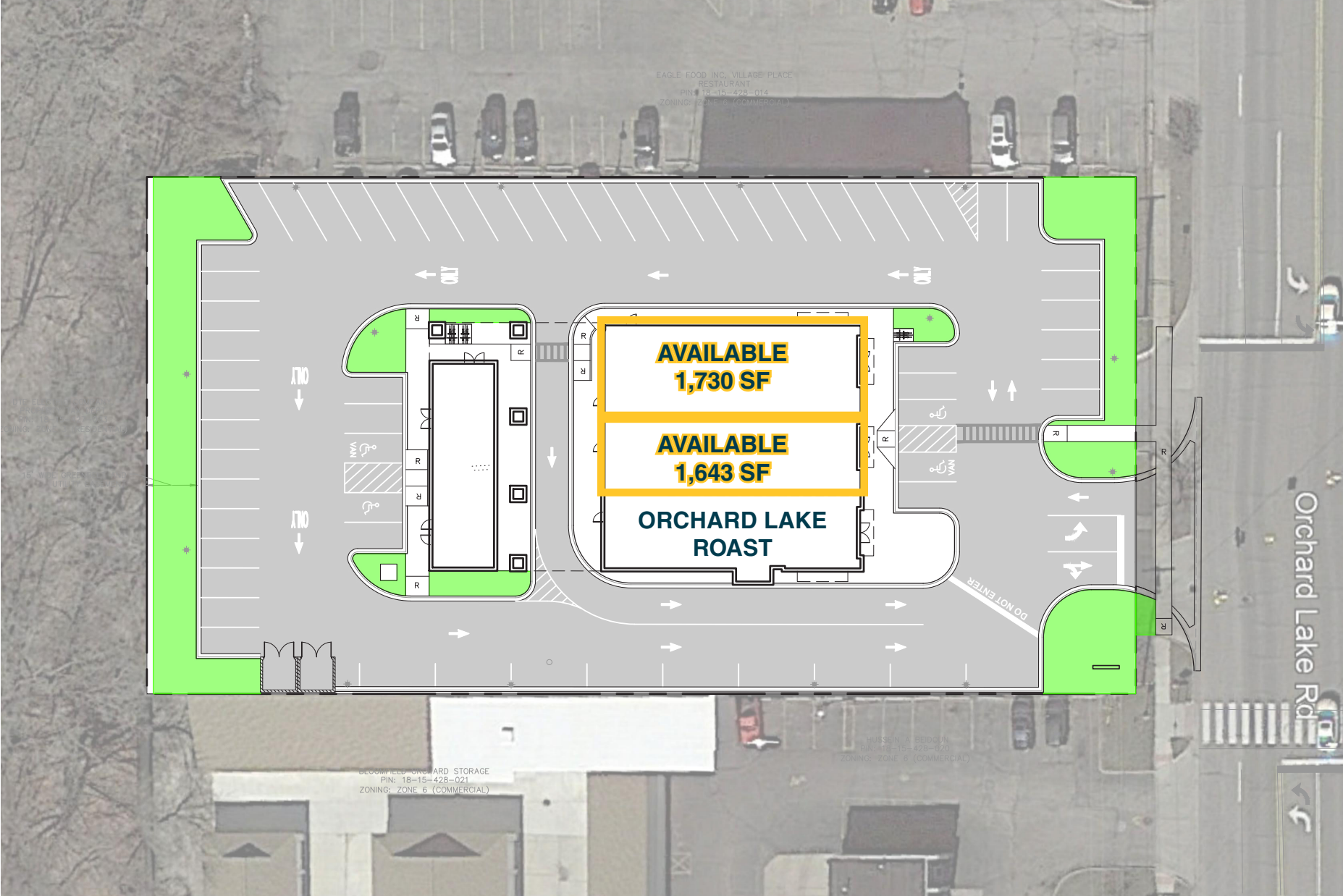
Area Tenants



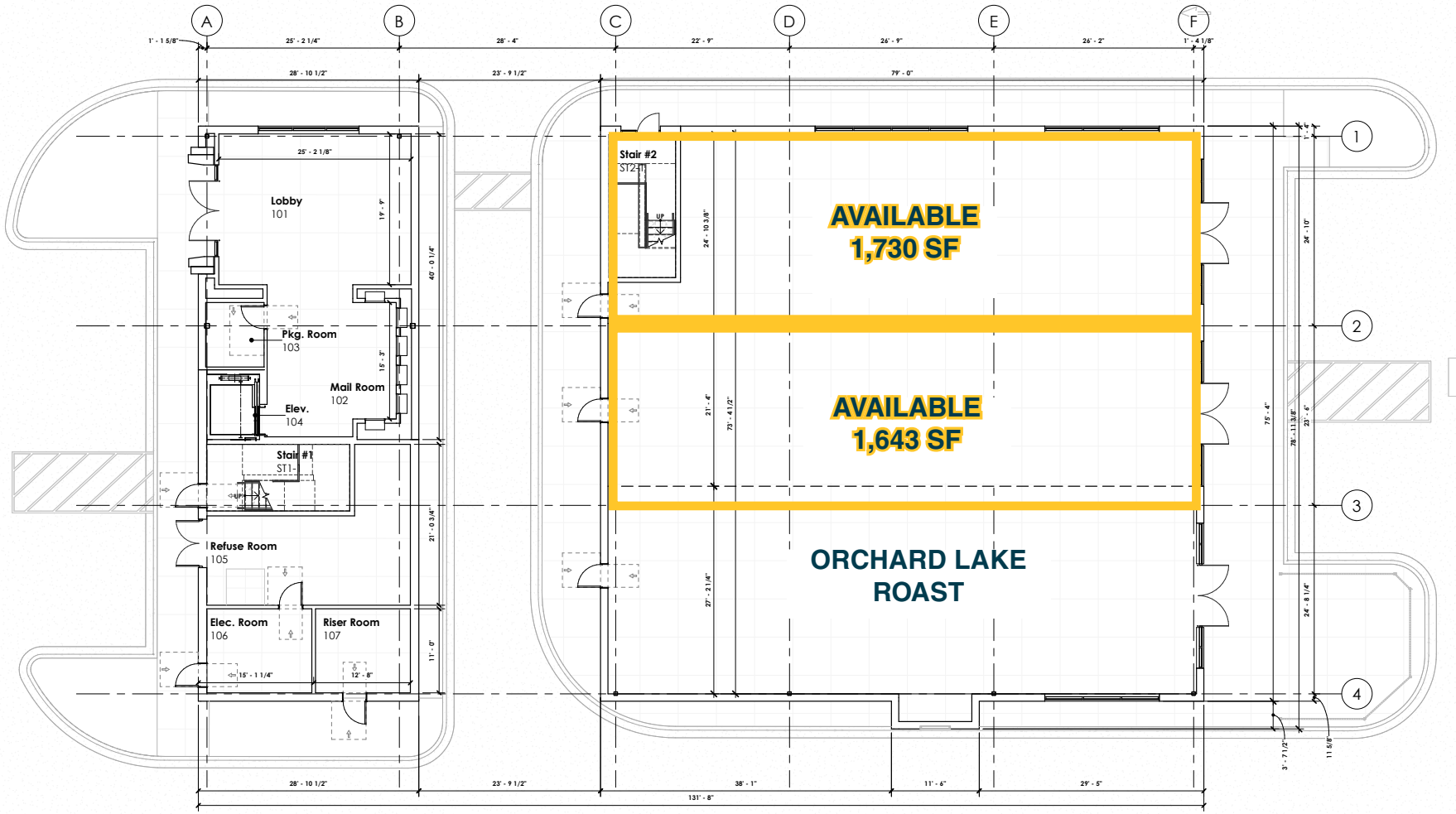
Demographics (2025)

	1 MILE	3 MILES	5 MILES
POPULATION	5,236	51,418	152,989
HOUSEHOLDS	2,062	20,478	63,080
AVG HOUSEHOLD INCOME	\$227,885	\$198,922	\$167,423
DAYTIME POPULATION	4,479	41,495	147,178

ORCHARD SHOPPES



ORCHARD SHOPPES



First Floor Plan

1/8" = 1'-0"

ORCHARD SHOPPES



View Looking Northwest



View Looking Southwest



View Looking East



View Looking Southeast

ORCHARD SHOPPES



SITE



7,529 vpd Lone Pine Road

AERIAL

ORCHARD SHOPPES

Katie
Fisch

Mid-America Real Estate -
Michigan, Inc.

T: 248.855.6800

KFisch@MidAmericaGrp.com

Eric
Unatin

Mid-America Real Estate -
Michigan, Inc.

T: 248.855.6800

EUnatin@MidAmericaGrp.com



38500 Woodward Ave, Suite 100
Bloomfield Hills, Michigan 48304
248.855.6800

MidAmericaGrp.com



CONTACT