

FOR SUBLEASE

±3,523 SQ. FT.
Freestanding Building

1874 S. SANTA CRUZ ST. | ANAHEIM | CA



PROPERTY FEATURES

- ± 1,200 Sq. Ft. of Office Area
- Fenced Yard Area
- 200 Amps of Distributed Power
- One (1) Ground Level Door
- 16' Warehouse Clearance
- Immediate Access to the Santa Ana (5) Freeway
- **Sublease Through August 31, 2028**



MIKE HEFNER, SIOR
Executive Vice President | Partner
(714) 935-2331
mhefner@voitco.com
License #00857352

BRENDEN HEFNER
Senior Associate
(714) 935-2326
bhefner@voitco.com
License #02114046

Voit
REAL ESTATE SERVICES

HV HEFNER
VERNICK
TEAM

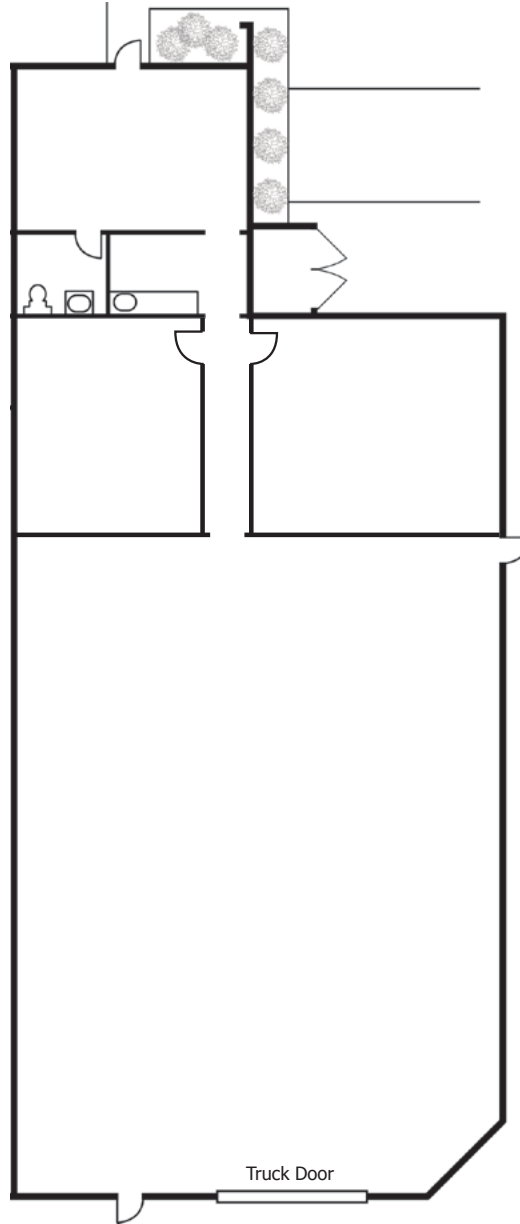
2400 E. Katella Ave., Suite 750
Anaheim, CA 92806
www.VoitCo.com

FOR SUBLEASE

±3,523 SQ. FT.
Freestanding Building

1874 S. SANTA CRUZ ST. | ANAHEIM | CA

FLOOR PLAN



**Not to scale*

MIKE HEFNER, SIOR
Executive Vice President | Partner
(714) 935-2331
mhefner@voitco.com
License #00857352

BRENDEN HEFNER
Senior Associate
(714) 935-2326
bhefner@voitco.com
License #02114046

Voit
REAL ESTATE SERVICES

HV HEFNER
VERNICK
TEAM

2400 E. Katella Ave., Suite 750
Anaheim, CA 92806
www.VoitCo.com