

# Prominent Brighton Location

Minutes From I-390 & I-590

465 Westfall Road  
Brighton, NY 14620

46,570 Square Foot, Highly Flexible Floor Plan



## Offering Overview

CBRE Upstate NY is pleased to offer for sale 465 Westfall Road in the Town of Brighton. Built in 1996 as a Veterans Affairs outpatient clinic, this property offers a large flexible floor plate of 46,570 square feet on one level. Centrally located, the property is minutes from I-390 & I-590, Monroe Community College, the University of Rochester Medical Center, CityGate and numerous other businesses and services.

## Offering Details

- + 46,570 Square Feet on 5.02 Acres
- + Flexible Floor Plan
- + Central Location
- + Sale Price: \$3,725,000



# Offering Details

- + 46,570 Square Feet
- + 5.02 Acres
- + Tax ID 136.18-1-4
- + Built in 1996
- + Electric:: 480Y/277volts, 800Amp-3Phase
- + Steel Structure, Brick Facade
- + Standing Seam Metal Roof
- + 182± Parking Spaces
- + Zoning: BE-1 Office & Office Park District
- + Minutes From I-390 and I-590
- + Central Location

## Contact Us

### Angelo Nole

+1 585 784 3637  
angelo.nole@cbre-rochester.com  
Licensed Associate Real Estate Broker

### Alex Amorese

+1 585 784 3621  
alex.amorese@cbre-rochester.com  
Licensed Real Estate Salesperson

### Andrew Gearhart

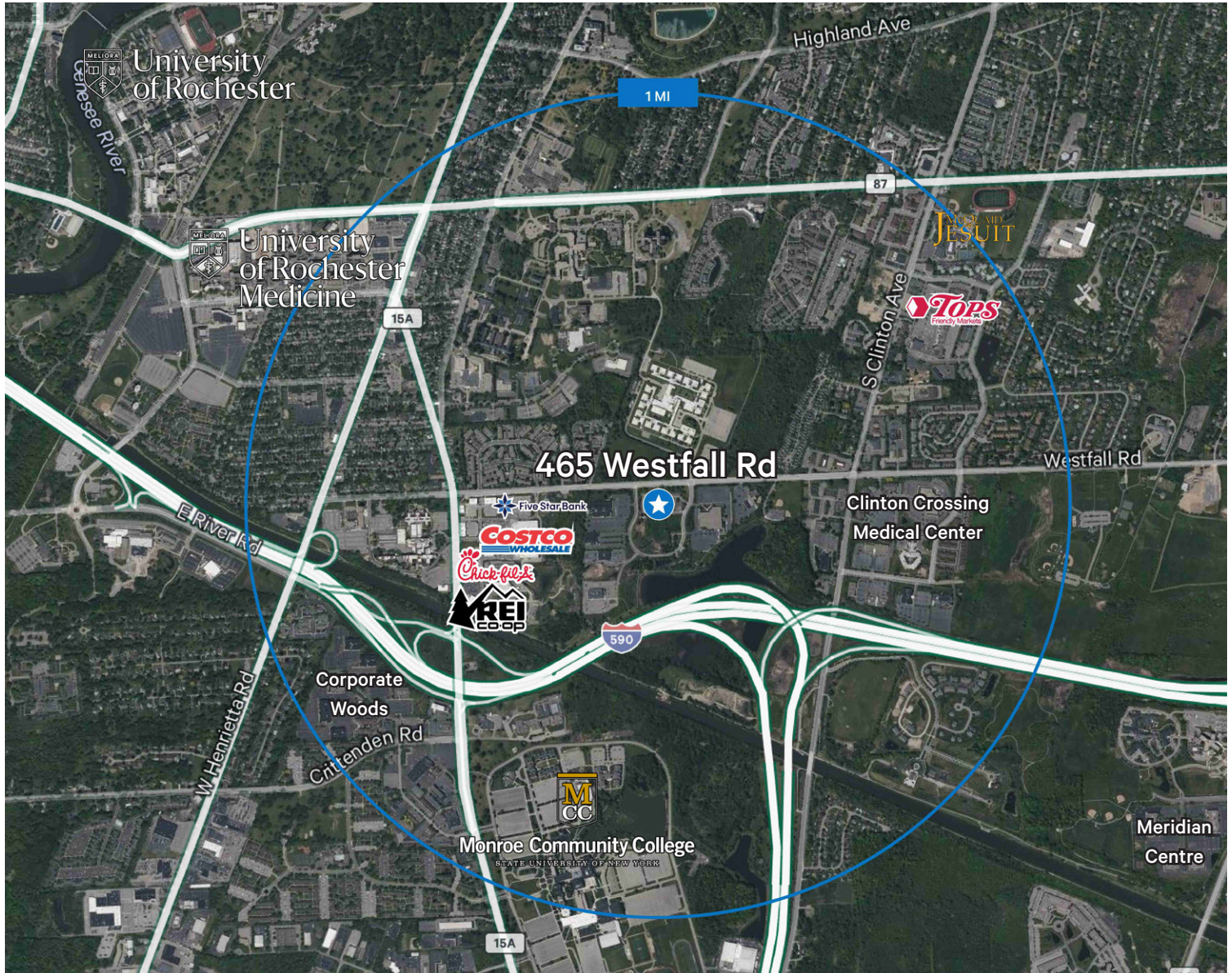
+1 585 784 3626  
andrew.gearhart@cbre-rochester.com  
Licensed Real Estate Salesperson

© 2026 CBRE Upstate NY, part of the CBRE Affiliate Network. All rights reserved. This information has been obtained from sources believed reliable, but has not been verified for accuracy or completeness. You should conduct a careful, independent investigation of the property and verify all information. Any reliance on this information is solely at your own risk. CBRE Upstate NY and the CBRE Upstate NY logo are service marks of CBRE Upstate NY. All other marks displayed on this document are the property of their respective owners, and the use of such logos does not imply any affiliation with or endorsement of CBRE Upstate NY. Photos herein are the property of their respective owners. Use of these images without the express written consent of the owner is prohibited.

### CBRE Upstate NY

1350 University Ave, Ste 100  
Rochester, NY 14607  
+1 585 240 8080  
www.cbre.com/rochester

**CBRE Upstate NY**  
PART OF THE AFFILIATE NETWORK



## Contact Us

**Angelo Nole**

+1 585 784 3637  
angelo.nole@cbre-rochester.com  
Licensed Associate Real Estate Broker

**Alex Amorese**

+1 585 784 3621  
alex.amorese@cbre-rochester.com  
Licensed Real Estate Salesperson

**Andrew Gearhart**

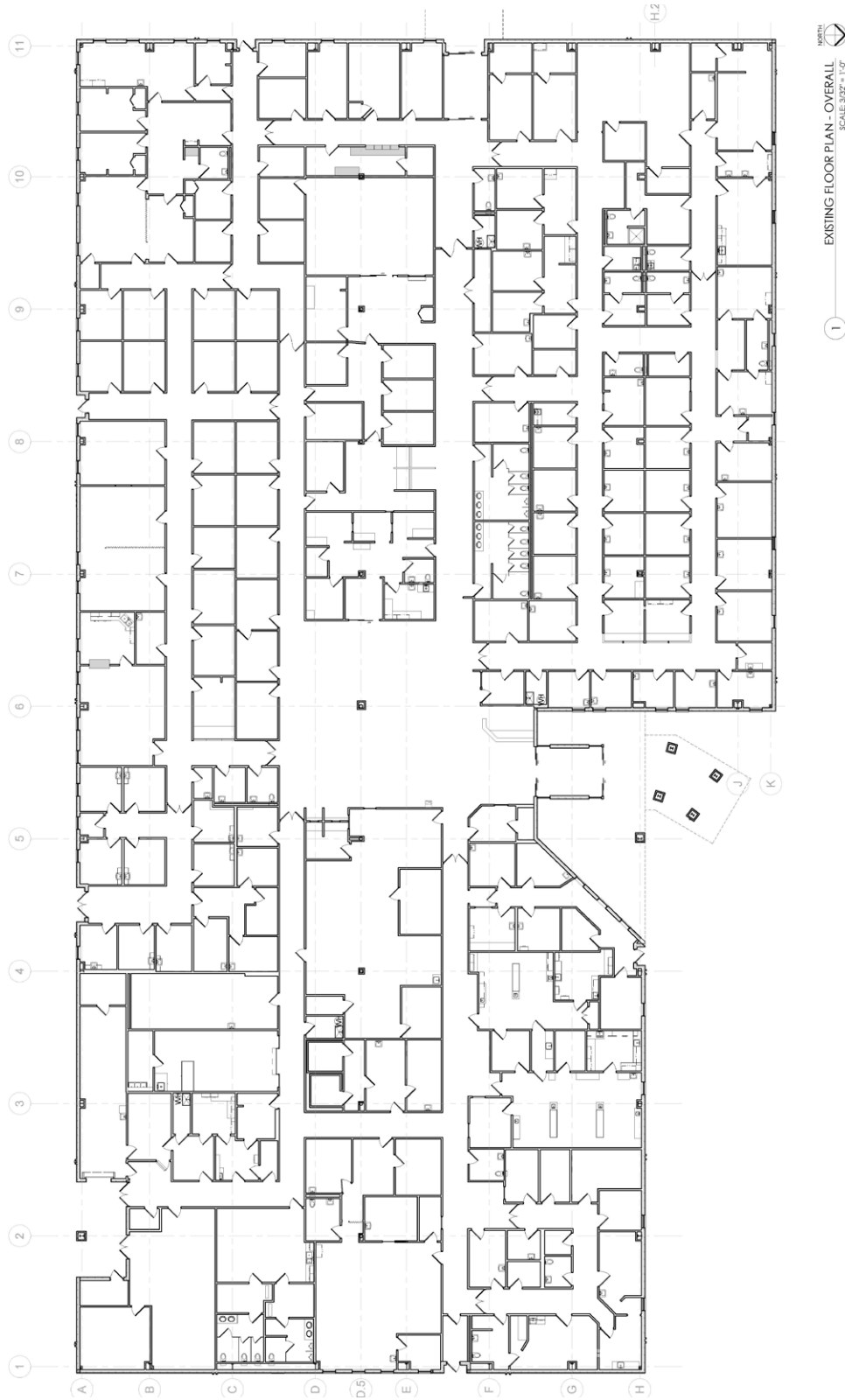
+1 585 784 3626  
andrew.gearhart@cbre-rochester.com  
Licensed Real Estate Salesperson

© 2026 CBRE Upstate NY, part of the CBRE Affiliate Network. All rights reserved. This information has been obtained from sources believed reliable, but has not been verified for accuracy or completeness. You should conduct a careful, independent investigation of the property and verify all information. Any reliance on this information is solely at your own risk. CBRE Upstate NY and the CBRE Upstate NY logo are service marks of CBRE Upstate NY. All other marks displayed on this document are the property of their respective owners, and the use of such logos does not imply any affiliation with or endorsement of CBRE Upstate NY. Photos herein are the property of their respective owners. Use of these images without the express written consent of the owner is prohibited.

**CBRE Upstate NY**

1350 University Ave, Ste 100  
Rochester, NY 14607  
+1 585 240 8080  
www.cbre.com/rochester

**CBRE Upstate NY**  
PART OF THE AFFILIATE NETWORK



## Contact Us

**Angelo Nole**  
+1 585 784 3637  
angelo.nole@cbre-rochester.com  
Licensed Associate Real Estate Broker

**Alex Amorese**  
+1 585 784 3621  
alex.amorese@cbre-rochester.com  
Licensed Real Estate Salesperson

**Andrew Gearhart**  
+1 585 784 3626  
andrew.gearhart@cbre-rochester.com  
Licensed Real Estate Salesperson