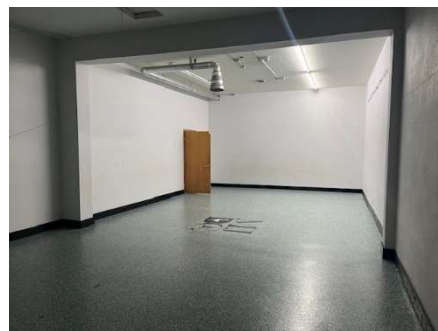


FOR LEASE
RE/MAX
COMMERCIAL®

6382 Main Street, North Branch, MN 55056

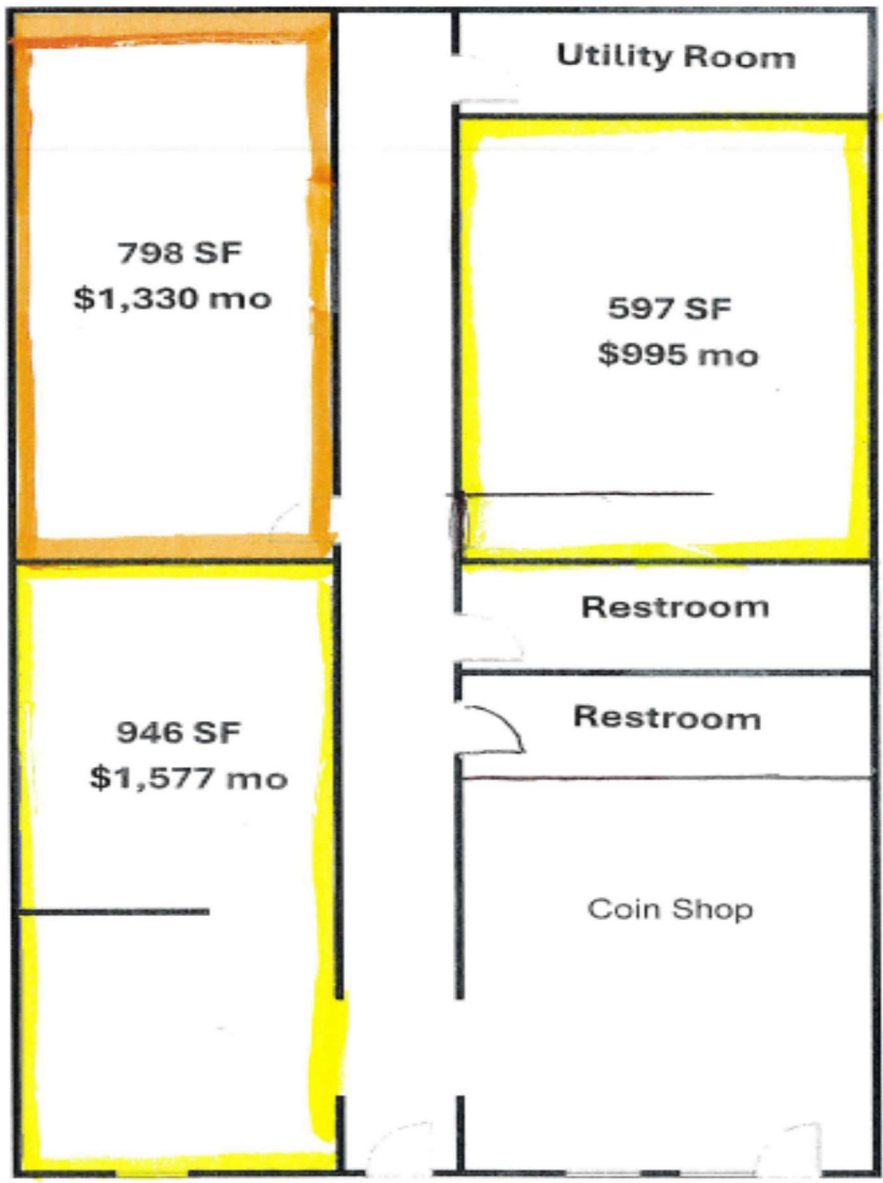


PROPERTY FEATURES:

- **THREE SUITES AVAILABLE!**
- **597 – 2341 sf Available**
- **Prime downtown location - great visibility & high traffic**
- **946 square feet of space, with large front retail window**
- **798 square feet with overhead door in rear**
- **Common area restrooms, off street & municipal parking**
- **\$20 psf**
- **One mile to I35**

FOR MORE INFORMATION:

JULIE NASH SMITH
651-982-1256 OR JNASHSMITH@REMAX.NET



FLOOR PLAN