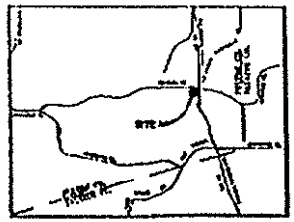


P.02/02
8:23
Feb 27 '97

DANSE/DEVELOPER
MIDCOM PROPERTIES
3501 PEACHTREE RD, SUITE 300
ATLANTA, GA 30326
PH: 404-282-7400
CONTACT: STEVE OSTERBLK



FULTON CO. TRANSPORTATION NOTES

1. THIS SITE IS LOCATED AT THE INTERSECTION OF BETHSAIDA ROAD AND OLD NATIONAL HIGHWAY. THE PROPOSED PHASE I DEVELOPMENT IS LOCATED ON THE WEST SIDE OF BETHSAIDA ROAD, ADJACENT TO THE EXISTING CVS PHARMACY. THE PROPOSED DEVELOPMENT WILL BE A 10,125 S.F. 1-STORY PHARMACY WITH 12 SPACES OF PARKING. THE PROPOSED DEVELOPMENT WILL BE ADJACENT TO THE EXISTING CVS PHARMACY AND WILL BE SEPARATED FROM THE EXISTING CVS PHARMACY BY A 15' LANDSCAPE STRIP. THE PROPOSED DEVELOPMENT WILL BE ADJACENT TO THE EXISTING CVS PHARMACY AND WILL BE SEPARATED FROM THE EXISTING CVS PHARMACY BY A 15' LANDSCAPE STRIP.
2. THE PROPOSED DEVELOPMENT WILL BE ADJACENT TO THE EXISTING CVS PHARMACY AND WILL BE SEPARATED FROM THE EXISTING CVS PHARMACY BY A 15' LANDSCAPE STRIP.
3. THE PROPOSED DEVELOPMENT WILL BE ADJACENT TO THE EXISTING CVS PHARMACY AND WILL BE SEPARATED FROM THE EXISTING CVS PHARMACY BY A 15' LANDSCAPE STRIP.
4. THE PROPOSED DEVELOPMENT WILL BE ADJACENT TO THE EXISTING CVS PHARMACY AND WILL BE SEPARATED FROM THE EXISTING CVS PHARMACY BY A 15' LANDSCAPE STRIP.
5. THE PROPOSED DEVELOPMENT WILL BE ADJACENT TO THE EXISTING CVS PHARMACY AND WILL BE SEPARATED FROM THE EXISTING CVS PHARMACY BY A 15' LANDSCAPE STRIP.
6. THE PROPOSED DEVELOPMENT WILL BE ADJACENT TO THE EXISTING CVS PHARMACY AND WILL BE SEPARATED FROM THE EXISTING CVS PHARMACY BY A 15' LANDSCAPE STRIP.
7. THE PROPOSED DEVELOPMENT WILL BE ADJACENT TO THE EXISTING CVS PHARMACY AND WILL BE SEPARATED FROM THE EXISTING CVS PHARMACY BY A 15' LANDSCAPE STRIP.
8. THE PROPOSED DEVELOPMENT WILL BE ADJACENT TO THE EXISTING CVS PHARMACY AND WILL BE SEPARATED FROM THE EXISTING CVS PHARMACY BY A 15' LANDSCAPE STRIP.
9. THE PROPOSED DEVELOPMENT WILL BE ADJACENT TO THE EXISTING CVS PHARMACY AND WILL BE SEPARATED FROM THE EXISTING CVS PHARMACY BY A 15' LANDSCAPE STRIP.
10. THE PROPOSED DEVELOPMENT WILL BE ADJACENT TO THE EXISTING CVS PHARMACY AND WILL BE SEPARATED FROM THE EXISTING CVS PHARMACY BY A 15' LANDSCAPE STRIP.
11. THE PROPOSED DEVELOPMENT WILL BE ADJACENT TO THE EXISTING CVS PHARMACY AND WILL BE SEPARATED FROM THE EXISTING CVS PHARMACY BY A 15' LANDSCAPE STRIP.
12. THE PROPOSED DEVELOPMENT WILL BE ADJACENT TO THE EXISTING CVS PHARMACY AND WILL BE SEPARATED FROM THE EXISTING CVS PHARMACY BY A 15' LANDSCAPE STRIP.

SITE NOTES

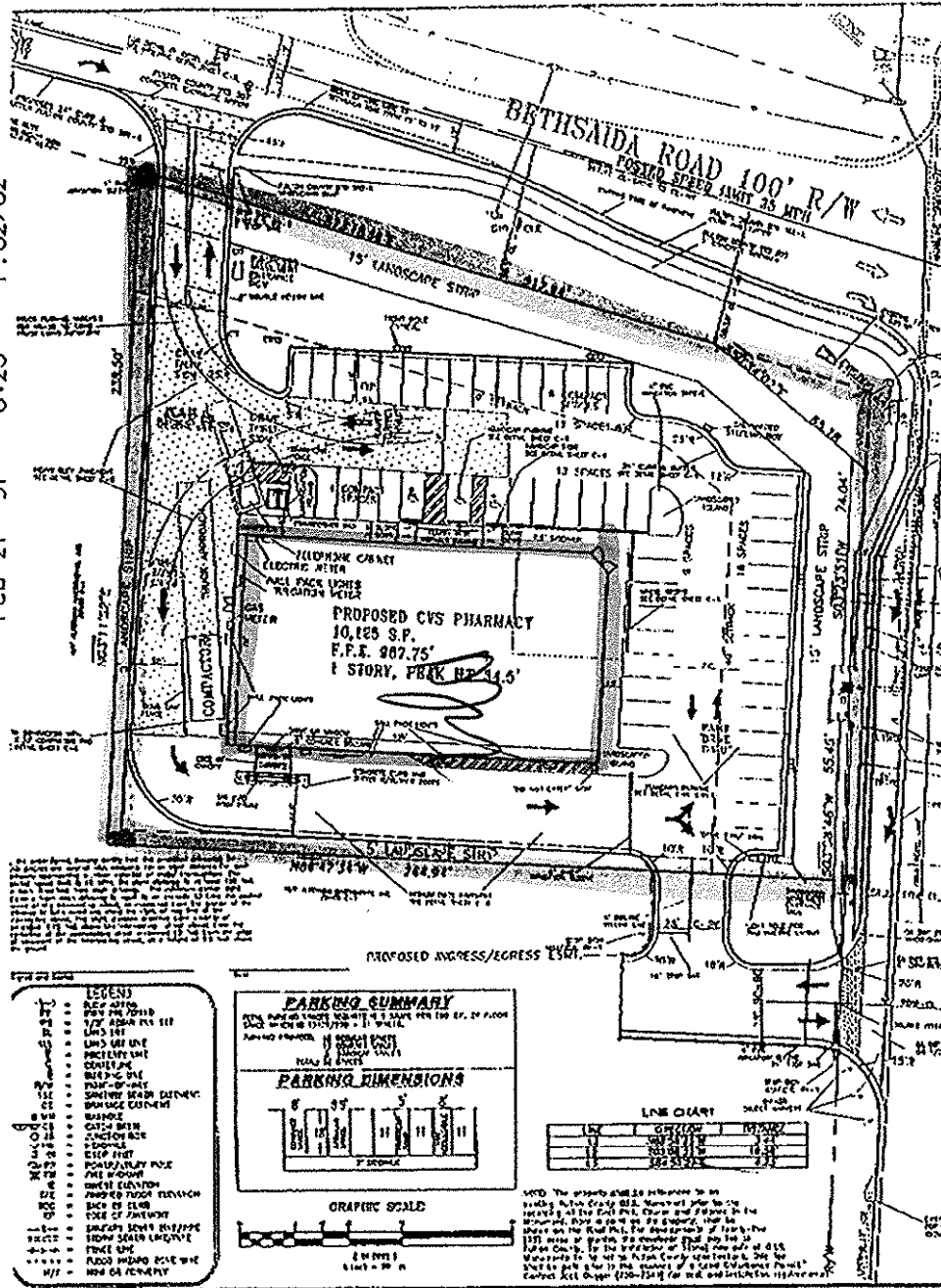
1. AREA OF SITE IS 2.25 ACRES.
2. ALL UTILITIES SHOULD BE SHOWN BY DATE ON FACE OF RECORD.
3. NUMBER OF UTILITIES:
4. ALL UTILITIES SHOULD BE SHOWN BY DATE ON FACE OF RECORD.
5. ALL UTILITIES SHOULD BE SHOWN BY DATE ON FACE OF RECORD.
6. ALL UTILITIES SHOULD BE SHOWN BY DATE ON FACE OF RECORD.
7. ALL UTILITIES SHOULD BE SHOWN BY DATE ON FACE OF RECORD.
8. ALL UTILITIES SHOULD BE SHOWN BY DATE ON FACE OF RECORD.
9. ALL UTILITIES SHOULD BE SHOWN BY DATE ON FACE OF RECORD.
10. ALL UTILITIES SHOULD BE SHOWN BY DATE ON FACE OF RECORD.
11. ALL UTILITIES SHOULD BE SHOWN BY DATE ON FACE OF RECORD.
12. ALL UTILITIES SHOULD BE SHOWN BY DATE ON FACE OF RECORD.

DOT NOTES

1. THE PROPOSED DEVELOPMENT WILL BE ADJACENT TO THE EXISTING CVS PHARMACY AND WILL BE SEPARATED FROM THE EXISTING CVS PHARMACY BY A 15' LANDSCAPE STRIP.
2. THE PROPOSED DEVELOPMENT WILL BE ADJACENT TO THE EXISTING CVS PHARMACY AND WILL BE SEPARATED FROM THE EXISTING CVS PHARMACY BY A 15' LANDSCAPE STRIP.
3. THE PROPOSED DEVELOPMENT WILL BE ADJACENT TO THE EXISTING CVS PHARMACY AND WILL BE SEPARATED FROM THE EXISTING CVS PHARMACY BY A 15' LANDSCAPE STRIP.
4. THE PROPOSED DEVELOPMENT WILL BE ADJACENT TO THE EXISTING CVS PHARMACY AND WILL BE SEPARATED FROM THE EXISTING CVS PHARMACY BY A 15' LANDSCAPE STRIP.
5. THE PROPOSED DEVELOPMENT WILL BE ADJACENT TO THE EXISTING CVS PHARMACY AND WILL BE SEPARATED FROM THE EXISTING CVS PHARMACY BY A 15' LANDSCAPE STRIP.
6. THE PROPOSED DEVELOPMENT WILL BE ADJACENT TO THE EXISTING CVS PHARMACY AND WILL BE SEPARATED FROM THE EXISTING CVS PHARMACY BY A 15' LANDSCAPE STRIP.
7. THE PROPOSED DEVELOPMENT WILL BE ADJACENT TO THE EXISTING CVS PHARMACY AND WILL BE SEPARATED FROM THE EXISTING CVS PHARMACY BY A 15' LANDSCAPE STRIP.
8. THE PROPOSED DEVELOPMENT WILL BE ADJACENT TO THE EXISTING CVS PHARMACY AND WILL BE SEPARATED FROM THE EXISTING CVS PHARMACY BY A 15' LANDSCAPE STRIP.
9. THE PROPOSED DEVELOPMENT WILL BE ADJACENT TO THE EXISTING CVS PHARMACY AND WILL BE SEPARATED FROM THE EXISTING CVS PHARMACY BY A 15' LANDSCAPE STRIP.
10. THE PROPOSED DEVELOPMENT WILL BE ADJACENT TO THE EXISTING CVS PHARMACY AND WILL BE SEPARATED FROM THE EXISTING CVS PHARMACY BY A 15' LANDSCAPE STRIP.
11. THE PROPOSED DEVELOPMENT WILL BE ADJACENT TO THE EXISTING CVS PHARMACY AND WILL BE SEPARATED FROM THE EXISTING CVS PHARMACY BY A 15' LANDSCAPE STRIP.
12. THE PROPOSED DEVELOPMENT WILL BE ADJACENT TO THE EXISTING CVS PHARMACY AND WILL BE SEPARATED FROM THE EXISTING CVS PHARMACY BY A 15' LANDSCAPE STRIP.

OLD NATIONAL OVERALL DISTRICT NOTES

1. THE PROPOSED DEVELOPMENT WILL BE ADJACENT TO THE EXISTING CVS PHARMACY AND WILL BE SEPARATED FROM THE EXISTING CVS PHARMACY BY A 15' LANDSCAPE STRIP.
2. THE PROPOSED DEVELOPMENT WILL BE ADJACENT TO THE EXISTING CVS PHARMACY AND WILL BE SEPARATED FROM THE EXISTING CVS PHARMACY BY A 15' LANDSCAPE STRIP.
3. THE PROPOSED DEVELOPMENT WILL BE ADJACENT TO THE EXISTING CVS PHARMACY AND WILL BE SEPARATED FROM THE EXISTING CVS PHARMACY BY A 15' LANDSCAPE STRIP.
4. THE PROPOSED DEVELOPMENT WILL BE ADJACENT TO THE EXISTING CVS PHARMACY AND WILL BE SEPARATED FROM THE EXISTING CVS PHARMACY BY A 15' LANDSCAPE STRIP.
5. THE PROPOSED DEVELOPMENT WILL BE ADJACENT TO THE EXISTING CVS PHARMACY AND WILL BE SEPARATED FROM THE EXISTING CVS PHARMACY BY A 15' LANDSCAPE STRIP.
6. THE PROPOSED DEVELOPMENT WILL BE ADJACENT TO THE EXISTING CVS PHARMACY AND WILL BE SEPARATED FROM THE EXISTING CVS PHARMACY BY A 15' LANDSCAPE STRIP.
7. THE PROPOSED DEVELOPMENT WILL BE ADJACENT TO THE EXISTING CVS PHARMACY AND WILL BE SEPARATED FROM THE EXISTING CVS PHARMACY BY A 15' LANDSCAPE STRIP.
8. THE PROPOSED DEVELOPMENT WILL BE ADJACENT TO THE EXISTING CVS PHARMACY AND WILL BE SEPARATED FROM THE EXISTING CVS PHARMACY BY A 15' LANDSCAPE STRIP.
9. THE PROPOSED DEVELOPMENT WILL BE ADJACENT TO THE EXISTING CVS PHARMACY AND WILL BE SEPARATED FROM THE EXISTING CVS PHARMACY BY A 15' LANDSCAPE STRIP.
10. THE PROPOSED DEVELOPMENT WILL BE ADJACENT TO THE EXISTING CVS PHARMACY AND WILL BE SEPARATED FROM THE EXISTING CVS PHARMACY BY A 15' LANDSCAPE STRIP.
11. THE PROPOSED DEVELOPMENT WILL BE ADJACENT TO THE EXISTING CVS PHARMACY AND WILL BE SEPARATED FROM THE EXISTING CVS PHARMACY BY A 15' LANDSCAPE STRIP.
12. THE PROPOSED DEVELOPMENT WILL BE ADJACENT TO THE EXISTING CVS PHARMACY AND WILL BE SEPARATED FROM THE EXISTING CVS PHARMACY BY A 15' LANDSCAPE STRIP.

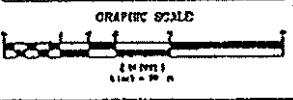


PARKING SUMMARY

NO. OF SPACES: 12

PARKING DIMENSIONS

TYPE	NO.	WIDTH (FT)	LENGTH (FT)
STANDARD	12	12	20



- LEGEND**
- 1. 1" = 10'
 - 2. 1" = 20'
 - 3. 1" = 30'
 - 4. 1" = 40'
 - 5. 1" = 50'
 - 6. 1" = 60'
 - 7. 1" = 70'
 - 8. 1" = 80'
 - 9. 1" = 90'
 - 10. 1" = 100'
 - 11. 1" = 110'
 - 12. 1" = 120'
 - 13. 1" = 130'
 - 14. 1" = 140'
 - 15. 1" = 150'
 - 16. 1" = 160'
 - 17. 1" = 170'
 - 18. 1" = 180'
 - 19. 1" = 190'
 - 20. 1" = 200'
 - 21. 1" = 210'
 - 22. 1" = 220'
 - 23. 1" = 230'
 - 24. 1" = 240'
 - 25. 1" = 250'
 - 26. 1" = 260'
 - 27. 1" = 270'
 - 28. 1" = 280'
 - 29. 1" = 290'
 - 30. 1" = 300'
 - 31. 1" = 310'
 - 32. 1" = 320'
 - 33. 1" = 330'
 - 34. 1" = 340'
 - 35. 1" = 350'
 - 36. 1" = 360'
 - 37. 1" = 370'
 - 38. 1" = 380'
 - 39. 1" = 390'
 - 40. 1" = 400'
 - 41. 1" = 410'
 - 42. 1" = 420'
 - 43. 1" = 430'
 - 44. 1" = 440'
 - 45. 1" = 450'
 - 46. 1" = 460'
 - 47. 1" = 470'
 - 48. 1" = 480'
 - 49. 1" = 490'
 - 50. 1" = 500'

PRECISION PLANNING, INC.

1000 PHOENIX BLVD, SUITE 200
ATLANTA, GA 30329
PHONE: 404-525-1100
FAX: 404-525-1101

CVS PHARMACY

SHEET TITLE: SITE PLAN
SHEET NO.: 0-1
DATE: 02/27/97
DRAWN BY: [Name]
CHECKED BY: [Name]

REVISION

NO.	DESCRIPTION

Exhibit A

2813